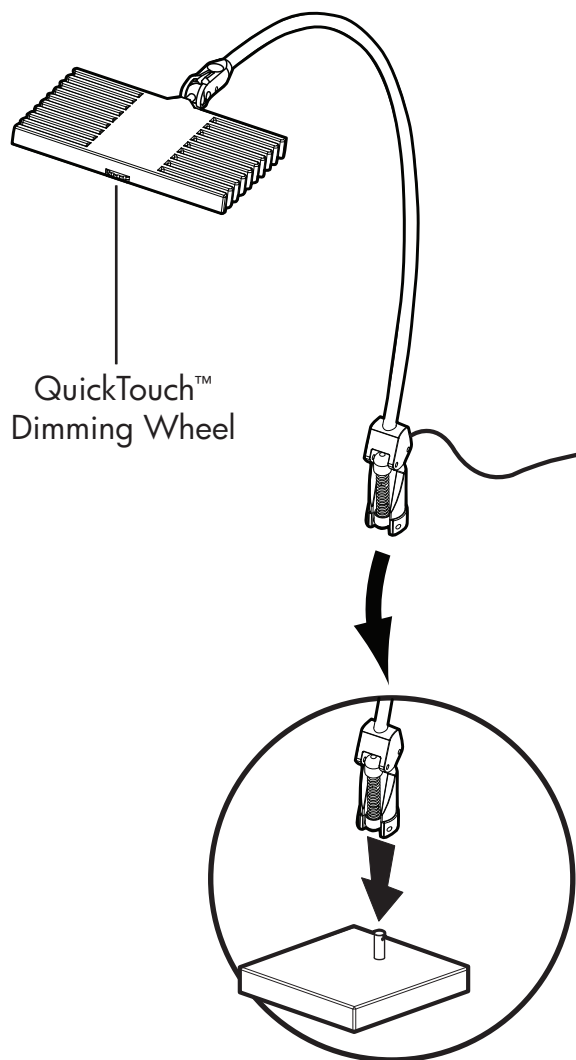
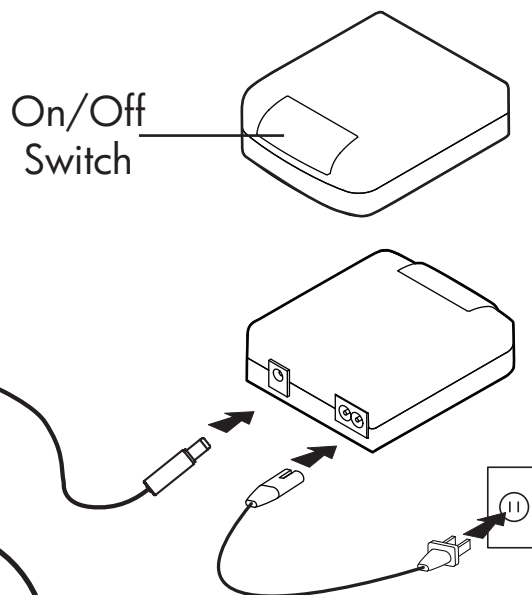


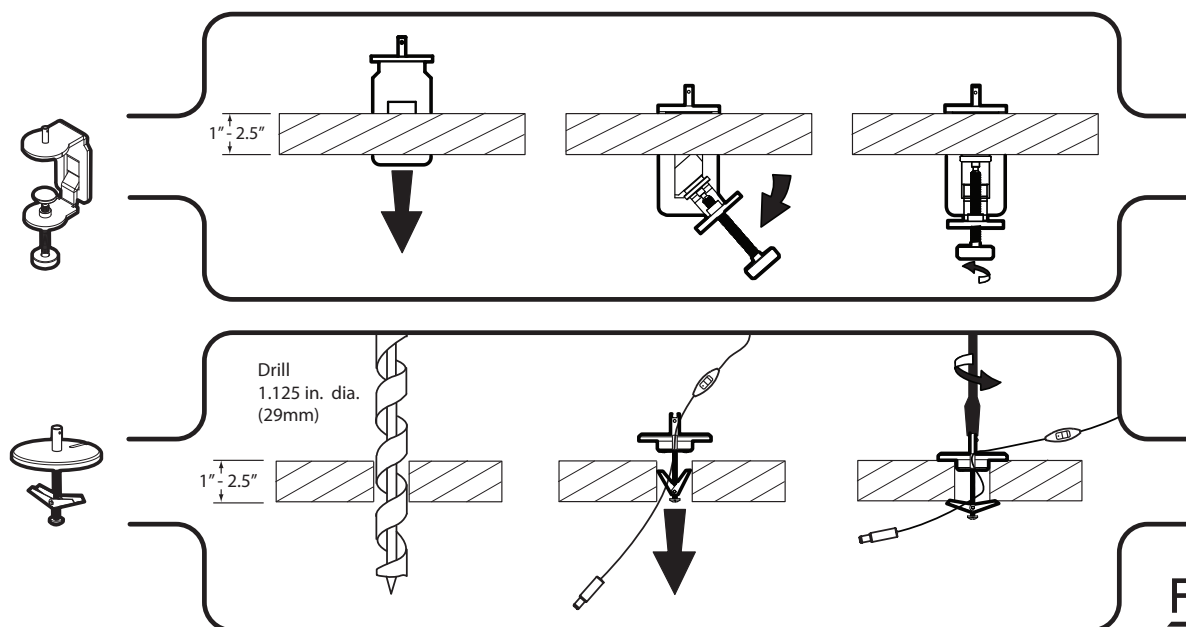
## DESK LAMP



## POWER SUPPLY



## MOUNTING



## WARRANTY AND RETURN INFORMATION

Finelite, Inc., warrants all CURVE *by Finelite™* components to be free from defects in materials and workmanship for a period of five years. Contact Finelite Inside Sales for return information if you have a warranty claim.

## TROUBLESHOOTING GUIDELINES

What if the fixture doesn't illuminate?

- Check all connections. Is the connection to the power supply secure and fully inserted?
- Is the low voltage connection secured and fully inserted?
- Is the on/off fixture switch in the "ON" position?

What if the fixture flashes when powered?

- Cycle power on/off to power supply if necessary.

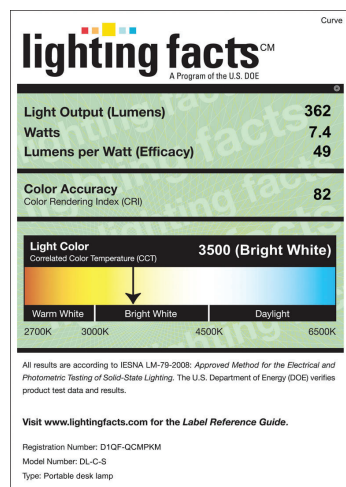
## CARE AND CLEANING

Your CURVE *by Finelite™* should operate trouble free for the life of the system. You may periodically wipe the fixture clean with a slightly damp soft cloth. Do not use any solvent or alcohol-based cleaning products on plastic or painted surfaces or on the labels.

A brand of **legrand®**

**FINELITE**  
Better Lighting

## LIGHTING FACTS<sup>CM</sup> LABEL



Complies with FCC requirements for commercial and residential use.

### Commercial Use:

**Note:** This equipment has been tested and found to comply with the limits for a Class A digital device, pursuant to Part 15 of the FCC Rules. These limits are designed to provide reasonable protection against harmful interference when the equipment is operated in a commercial environment. This equipment generates, uses, and can radiate radio frequency energy and, if not installed and used in accordance with the instruction manual, may cause harmful interference to radio communications. Operation of this equipment in a residential area is likely to cause harmful interference in which case the user will be required to correct the interference at his own expense.

### Residential Use:

**Note:** This equipment has been tested and found to comply with the limits for a Class B digital device, pursuant to Part 15 of the FCC Rules. These limits are designed to provide reasonable protection against harmful interference in a residential installation. This equipment generates, uses and can radiate radio frequency energy and, if not installed and used in accordance with the instructions, may cause harmful interference to radio communications. However, there is no guarantee that interference will not occur in a particular installation. If this equipment does cause harmful interference to radio or television reception, which can be determined by turning the equipment off and on, the user is encouraged to try to correct the interference by one or more of the following measures:

- Reorient or relocate the receiving antenna.
- Increase the separation between the equipment and receiver.
- Connect the equipment into an outlet on a circuit different from that to which the receiver is connected.
- Consult the dealer or an experienced radio/TV technician for help.