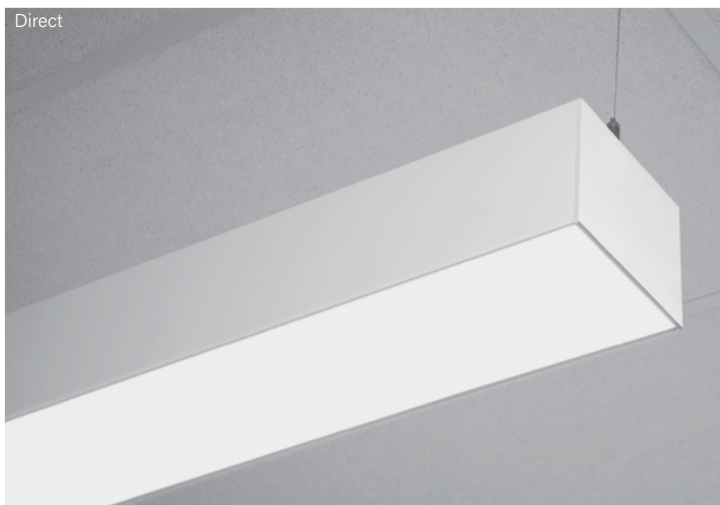


| | | |
|----------------|----------|-------|
| Submitted by: | | Date: |
| Type: | Project: | |
| Ordering Info: | | |

High Performance 6" Aperture (HP-6) Pendant



Indigo-Clean Technology is a Continuous Environmental Disinfection System that emits a narrow spectrum light that kills bacteria, Influenza-A¹, and SARS-CoV-2 – the virus that causes COVID-19¹ – and is proven effective by recently conducted independent lab testing. Unlike UV disinfection, Indigo-Clean Technology is designed to safely and continuously disinfect a space while it is fully occupied.

Single-Mode Indigo-Clean Technology utilizes a combination of blended white LEDs and 405nm LEDs on a single circuit board design. When the luminaires are on, the disinfection is active.

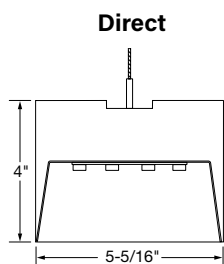
Dual-Mode Indigo-Clean Technology utilizes a mid-power of blended white LEDs and 405nm LEDs on a two circuit board design and full 405nm indigo light using automated controls to disinfect the space. When the space is unoccupied, it utilizes just the 405nm LEDs with increased output to increase disinfection efficacy.

These products are enrolled in the International Living Future Institute (ILFI). Declare 2.0 Program and is third-party verified with options achieving **Red List Approved** and **Red List Declared** status.

Signal White is standard finish

Note: see page 6 for all aesthetic options

CROSS SECTIONS



Flush Downlight Diffuser
(standard)

ALSO AVAILABLE IN



Recessed
(R)



Wall Mount
(WM)



Surface Mount
(SM)



Declare.



¹ [Indigo-Clean Research Reports](#)

Indigo-Clean is a registered trademark of
Kenall Manufacturing Co., a Legrand Company

| | | |
|----------------|----------|-------|
| Submitted by: | | Date: |
| Type: | Project: | |
| Ordering Info: | | |

High Performance 6" Aperture (HP-6) Pendant

Ordering Guide Example: HP - 6 - P - D - 36' - H - 837 - F - 96LG - 120 - SC - FC-10% - FA50 - C1 - FE - SW - LGD18W - OBO - CP

BODY TYPE

OUTPUT AND LED TYPE

| Platform | Series Name | Luminaire Type | Luminaire Distribution | Total Length of Run | Downlight Output (Flush) |
|-----------------------|-------------|----------------|------------------------|--|--|
| HP - High Performance | 6 | P - Pendant | D - Direct | Minimum 2' section length. Increments accurate to 1/16" (±1/32"), standard. 12' maximum section length. | H - High (670 lm/ft) V - Very High (862 lm/ft) TL - Tailored: _____ lm/ft* |

* Specify lm/ft of outputs between High (H) and Very High (V). Consult factory for tailored lumen output outside of this range.

OUTPUT AND LED TYPE

MECHANICAL OPTIONS

ELECTRICAL OPTIONS

| LED CRI/CCT | Downlight Optics | Reflector System | Voltage | Circuiting ¹ |
|--|-----------------------------|----------------------------------|--|---|
| 832-SMIC - 80 CRI, 3200K Single Mode Indigo-Clean 837-SMIC - 80 CRI, 3700K Single Mode Indigo-Clean 843-SMIC - 80 CRI, 4300K Single Mode Indigo-Clean 832-DMIC - 80 CRI, 3200K Dual Mode Indigo-Clean 837-DMIC - 80 CRI, 3700K Dual Mode Indigo-Clean 843-DMIC - 80 CRI, 4300K Dual Mode Indigo-Clean | F - Flush (standard) | 96LG - 96 Low Gloss White | 120 - 120 Voltage 277 - 277 Voltage 347 - 347 Voltage | SC - Single Circuit* One single circuit in a run MC - Multi-Circuit* More than one switch leg or zone. Factory shop drawings required * Battery, Night Light, and Emergency to Generator circuits are in addition to the normal luminaire circuit(s) |

ELECTRICAL OPTIONS

MOUNTING OPTIONS

| Driver Selection | Mounting Method | Ceiling Hardware Type |
|---|---|--|
| 0-10V Driver Options FC-10% - 0-10V 10% (standard) FC-1% - 0-10V 1% OTI-10% - EldoLED OTI, 0-10V 10% ² OTI-1% - EldoLED OTI, 0-10V 1% ² ELD-10V-0% - EldoLED SOLOdrive, 0-10V 0.1% DALI Driver Options FC-DALI-1% - DALI 1% DXL-DALI-1% - EldoLED Dexas, 1% ELD-DALI-0% - EldoLED SOLOdrive, 0.1% DMX Driver Options ELD-DMX - EldoLED POWERdrive, 0.1% Lutron Driver Options LUT-ES1 - Lutron, Ecosystem 1% See Page 3 for additional driver options and details | FA50 - Fully Adjustable 50" (standard) FA100 - Fully Adjustable 100" FA150 - Fully Adjustable 150" FA200 - Fully Adjustable 200" FA250 - Fully Adjustable 250" FA300 - Fully Adjustable 300" FM - Flexible Mounting ³ | C1 - 15/16" T-Bar C2 - 9/16" T-Bar C3 - Screw Slot C4 - Hard Ceiling C1T - 15/16" Tegular C2T - 9/16" Tegular |

OTHER OPTIONS

| Endcap Style | Finish | Emergency Style (Optional) See page 5 Backup Battery table | Integrated Sensor (Optional) | Special Options (Optional) |
|------------------------------------|--|---|--|---|
| FE - Flat Endcap (standard) | SW - Signal White (standard) FB - Finelite Black SA - Satin Aluminum #### - RAL Color Code ⁴ | LGD18W - Legrand 18W Brand Battery Back-up LGD10W - Legrand 10W Brand Battery Back-up EM/GEN - Emergency to Generator NL - Night Light BSL722 - Bodine Battery Back up BSL310LP - Bodine Battery Back up Low Profile GTD - Generator Transfer Device ALCR - Automatic Load Control Relay | OBO - Occupancy OBD - Daylight W601 - Wattstopper Wireless Sensor ⁵ OBE - Enlighted ⁶ CLM-99 - Encelium RF SLM-99 - Encelium Sensor AOCC-W - Lutron Athena Sensor (Device Color White) ⁷ AOCC-B - Lutron Athena Sensor (Device Color Black) ⁷ ARF-W - Lutron Athena RF (Device Color White) ⁷ ARF-B - Lutron Athena RF (Device Color Black) ⁷ VOCC - Lutron Vive Sensor ⁸ VRF - Lutron Vive RF ⁸ Integrated Sensor not available for Dual-Mode | CP - Chicago Plenum ⁹ RLA - Red List Approved RLD - Red List Declared |

¹ Contact factory for switching options

² Add DTO to gain "Dim to Off" functionality (FC-10% - DTO, FC-1% - DTO).
Not available with Dual-Mode.

³ Direct only

⁴ 20 business days lead time for color

⁵ LMFS-601 w/ 0-10V driver(s) and LMFI-111, up to 6 drivers may be connected.

LMFS-601 w/ Dali driver, only 1 driver can be connected.

⁶ Enlighted components installed by Finelite, provided by others

⁷ 0-10V Drivers - **AOCC** up to 10 drivers may be connected; **ARF** up to 40 drivers may be connected
DALI Drivers - **AOCC** & **ARF** up to 4 drivers can be connected.

⁸ Lutron Vive Integrated Sensors require a DALI driver

⁹ Only available with C1, C2, and C3 mounting hardware with Finelite Gridbox

| | | |
|----------------|----------|-------|
| Submitted by: | | Date: |
| Type: | Project: | |
| Ordering Info: | | |

High Performance 6" Aperture (HP-6) Pendant

SUPPLEMENTARY DRIVER PAGE

0-10V Driver Options

| | |
|--------------------|--|
| FC-10% | Factory Choice, 0-10V 10% Dimming (Linear) |
| FC-10%-DTO | Factory Choice, 0-10V 10% Dimming, Dim-to-Off (Linear) |
| FC-1% | Factory Choice, 0-10V 1% Dimming (Linear) |
| FC-1%-DTO | Factory Choice, 0-10V 1% Dimming, Dim-to-Off (Linear) |
| ELD-10V-0% | EldoLED SOLOdrive, 0-10V 0.1% Dimming (Linear) |
| ELD-10V-1% | EldoLED ECOdrive, 0-10V 1% Dimming (Linear) |
| OTi-10% | EldoLED OTi, 0-10V 10% Dimming (Linear) |
| OTi-10%-DTO | EldoLED OTi, 0-10V 10% Dimming, Dim-to-Off (Linear) |
| OTi-1% | EldoLED OTi, 0-10V 1% Dimming (Linear) |
| OTi-1%-DTO | EldoLED OTi, 0-10V 1% Dimming, Dim-to-Off (Linear) |

DALI Driver Options

| | |
|--------------------|--|
| FC-DALI-1% | Factory Choice, DALI 1% Dimming (Logarithmic) |
| DXL-DALI-1% | EldoLED Dexal, DALI 1% Dimming (Logarithmic) |
| ELD-DALI-0% | EldoLED SOLOdrive, DALI 0.1% Dimming (Logarithmic) |
| ELD-DALI-1% | EldoLED ECOdrive, DALI 1% Dimming (Logarithmic) |

DMX Driver Options

| | |
|-------------------|---|
| ELD-DMX | EldoLED POWERdrive, DMX 0.1% Dimming (8 Bit, 1CH) (Linear) |
| ELD-DMX-16 | EldoLED POWERdrive, DMX 0.1% Dimming (16 Bit, 2CH) (Linear) |

Lutron Driver Options

| | |
|----------------|------------------------------|
| LUT-ES1 | Lutron, Ecosystem 1% Dimming |
|----------------|------------------------------|

| | | |
|----------------|----------|-------|
| Submitted by: | | Date: |
| Type: | Project: | |
| Ordering Info: | | |

High Performance 6" Aperture (HP-6) Pendant

SPECIFICATIONS

BODY TYPE

CONSTRUCTION: Precision-cut 6063-T6 extruded aluminum body. Internal joiner system, plug-together wiring, standard.

LENGTHS: Any length, 2' minimum, in increments down to 1/16" ($\pm 1/32$ "). 12' maximum section length.

MITERED CORNERS: Fully illuminated 90° corners have internal secondary diffusers to ensure against light leaks. Custom angles are available (90° minimum on inside corners.) Consult factory for tailored lighting options.

OUTPUT AND LED TYPE

LIGHT OUTPUT: Lumen packages available for **HP-6 D:** High (**H**), and Very High (**V**). For Tailored Outputs outside of range from High (**H**) to Very High (**V**), consult factory. Light engines are replaceable.

INDIGO-CLEAN TECHNOLOGY: Indigo-Clean Technology utilizes a combination of blended white LEDs, and safe 405nm LEDs to continually disinfect a space and kill bacteria, Influenza-A¹, and SARS-CoV-2 – the virus that causes COVID-19¹. Unlike UV disinfection, Indigo-Clean Technology is designed to safely and continuously disinfect a space while it is fully occupied. When the Indigo-Clean Technology light is on, disinfection is active. For optimum performance, continuously provide an average 50-60 footcandles on the work plane and high touch surfaces (24/7). Dimming generally reduces effectiveness and increases the variation in the disinfecting light's visual appearance.

Single-Mode Indigo-Clean Technology: Continuous environmental disinfection system that uses a blended white LEDs and 405nm Indigo-Clean LEDs. The narrow spectrum light provides a safe visible light that disinfects the space. When the light is on, disinfection is active.

Dual-Mode Indigo-Clean Technology: Utilizes a two circuit board design. When the space is occupied it utilizes a combination of blended white LEDs and 405nm LEDs. When the space is unoccupied, it utilizes just the 405nm LEDs with increased output to increase disinfection efficacy.

Dual-Mode Indigo-Clean Technology Controller: It is a low-voltage internal device that determines the operational mode based on the input received from the external automated controls. An Off manual push will not turn the lights off, but rather turn the lights to Blue Mode. Please refer to Dual-Mode Application Guide for wiring diagram. Dim to Off not available.

MECHANICAL/OPTICAL OPTIONS

DOWNLIGHT OPTION: 12' maximum diffuser length. Flush frost white snap-in diffuser standard, 73% transmissive, 99% diffusion. Internal secondary diffusers at corners ensure visually seamless, uniform, continuous illumination. Available with Flush (**F**) downlight diffuser. Consult factory for more tailored lumen outputs.

LUMEN MAINTENANCE: White LEDs: 90% of initial light output (L90) at 100,000+ hours; 70% of initial light output (L70) at 200,000+ hours. 405nm LEDs: 70% of initial output at L70 @ 60,000 hours.

REFLECTORS: Die-formed 24-gauge cold-rolled steel reflectors finished in 96LG High Reflectance white powder coat paint.

ELECTRICAL OPTIONS

STATIC WHITE FEED: Standard with one 18-gauge/5-conductor single-circuit feed. 14-gauge feed used when luminaire current exceeds 5 amps.

STATIC WHITE DRIVER: Replaceable 120V, 277V, and 347V constant current reduction dimming driver standard. Can be wired dimming or non-dimming. 0-10V dimming controls with a range of 100%-10% standard. Dimming to 1% available. Driver is fully accessible from below the ceiling.

- **Power Factor:** ≥ 0.9
- **Total Harmonic Distortion (THD):** $< 20\%$
- **Expected driver lifetime:** 100,000 hours

LUTRON STATIC DRIVER OPTIONS:

LUT-ES1 - Hi-lume 1% EcoSystem with Soft-On, Fade-to-Black dimming (LDE1 series).

MOUNTING OPTIONS

HANGING HARDWARE: 50" Fully Adjustable (**FA**) steel-plated aircraft cable with safety stop hardware standard. The Flexible Mounting Bracket (**FM**) adjusts the suspension points to accommodate existing architecture. Suspension points adjust up to 2' in from the end of 8' or 12' fixture lengths and up to 1' in on shorter lengths. Consult factory for tailored lighting options.

OTHER OPTIONS

ENDCAPS: Flat diecast aluminum endcaps (**FE**) add 1/4" to each end of luminaire.

Continued

Page 4

¹ Indigo-Clean Research Reports

| | | |
|----------------|----------|-------|
| Submitted by: | | Date: |
| Type: | Project: | |
| Ordering Info: | | |

High Performance 6" Aperture (HP-6) Pendant

SPECIFICATIONS

EMERGENCY STYLE: Optional emergency to generator/inverter wiring, internal generator transfer switch, nightlight wiring, step-dimming driver, backup battery.

| Backup Battery | | |
|---------------------|-------------|-------------------------------|
| | Legrand 18W | Legrand 10W / Bodine BSL310LP |
| HP6-P-D | | |
| Min. Housing Length | 6' | 4' |
| EM Lumen Output | 1724 | 1026 |
| EM Section Illum. | 2' | 2' or 4' |

Based on 3700K and 80-CRI.
* Minimum fixture housing length for battery pack approved without sensor.
The lumens are based on 835. For other CCT/CRI, refer to the Lumen Adjustment Factor table on page 6.

| Bodine GTD and Legrand ALCR Min. Length | |
|---|------------|
| Configuration | Min Length |
| Generator | 2' |
| Generator + OCC | 2' |
| Day | 2' |
| Generator + Day | 2' |

INTEGRATED SENSORS: Integrated PIR (Passive Infrared) Occupancy (**OBO**) or Daylight Sensors (**OBD**) available with Flush and Bottom Glow downlight diffusers. PIR sensors not recommended for stairwell applications. Refer to Occupancy Sensor & Daylight Sensor tech sheet and the Embedded Intelligence landing page for more information and additional sensor options.

PATENT: Indigo-Clean products and technology covered by U.S. Patent No.US 9,039,966 and US 8,398,264. Product may also be covered by patents found at www.kenall.com/patents.

FINISHES: Finelite Signal White (**SW**) powder coat, Finelite Black (RAL 9005) with semi gloss fine texture (**FB**) and Satin Aluminum (**SA**) are standard. Optional Adders: 179 RAL colors².

LABELS: Luminaire and electrical components are ETL-listed conforming to UL 1598 in the U.S.A. and CAN/CSA C22.2 No. 250.0 in Canada. In accordance with NEC Code 410.130 (G), this luminaire contains an internal driver disconnect. UL 924 and UL 2108 - PoE options available on request. EPA Est.No. 99530-CA-2. These fixtures are rated for Damp Location. Chicago Plenum options available for C1, C2, or C3 suspension using our GridBox. Finelite products use electronic components that are RoHS compliant, and the mechanical components of the luminaire have been verified to not knowingly contain any restricted substances listed per RoHS Directive 2015/863. Consult factory for tailored lighting options. Finelite makes the specification process easy when putting healthier products on your projects. Simply add – **RLA** (Red List Approved) or – **RLD** (Red List Declared) to your part number.

WEIGHT³: D - 3.6 lb/ft

WARRANTY: 5-year performance-based warranty on all standard components. Optional accessories such as emergency battery packs are covered by their individual manufacturer warranties.

² 20 business days lead time for color

³ Excludes Battery Backup and Generator Transfer Device weight

| | | |
|----------------|----------|-------|
| Submitted by: | | Date: |
| Type: | Project: | |
| Ordering Info: | | |

High Performance 6" Aperture (HP-6) Pendant

Direct Photometry - 4' Luminaire 3700K

HP6-P-D-4'-V-837-F

Downlight: Flush Diffuser

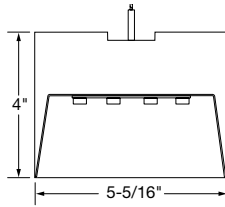
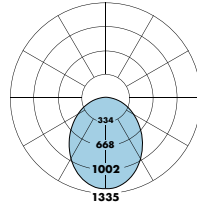
Efficacy: 96 lm/W

Total luminaire output: 3446 lumens (862 lm/ft)
35.2 watts (8.8 W/ft)

Peak Candela Value: 1242 @ 0°

CRI: 80 / CCT: 3700K

TL LM79 Report 85124 (Family Correlated)



CANDELA DISTRIBUTION

| | 0.0 | 22.5 | 45.0 | 67.5 | 90.0 | FLUX |
|----|------|------|------|------|------|------|
| 0 | 1242 | 1242 | 1242 | 1242 | 1242 | |
| 5 | 1235 | 1235 | 1234 | 1234 | 1234 | 126 |
| 15 | 1179 | 1170 | 1175 | 1174 | 1168 | 355 |
| 25 | 1069 | 1056 | 1060 | 1054 | 1048 | 523 |
| 35 | 917 | 906 | 906 | 897 | 891 | 607 |
| 45 | 743 | 734 | 733 | 723 | 719 | 606 |
| 55 | 560 | 553 | 551 | 543 | 539 | 529 |
| 65 | 375 | 374 | 373 | 368 | 367 | 395 |
| 75 | 204 | 204 | 205 | 203 | 204 | 233 |
| 85 | 58 | 59 | 60 | 61 | 60 | 71 |
| 90 | 0 | 0 | 0 | 0 | 0 | |

Information in chart below is for reference and based on ITL LM79 report 94139 (Family Correlated)

Total Light Output, 3700K, 80 CRI (Lumens) - 4' Luminaire

| H ¹ | V |
|----------------|------|
| 2680 | 3446 |

Light Output, 3700K, 80 CRI (Lumens Per Foot)

| H ¹ | V |
|----------------|-----|
| 670 | 862 |

Single Mode Power, 3700K (Watts Per Foot)

| H ¹ | V |
|----------------|-----|
| 6.8 | 8.8 |

Dual Mode Power, 3700K (Watts Per Foot)

| H ¹ | | | V | | |
|----------------|-----|------------|----------|-----|------------|
| Occupied | LPD | Unoccupied | Occupied | LPD | Unoccupied |
| 6.9 | 5.4 | 4.1 | 9.0 | 7.0 | 5.2 |

Efficacy, 3700K, 80 CRI (Lumens Per Watt)

| H ¹ | V |
|----------------|----|
| 99 | 98 |

1 Family Correlation based on 4' luminaire 3700K Very High Output (V) test - 120V.
H - High Output, V - Very High Output

Wattage is Real Power. If you would like additional details to calculate Apparent Power, please contact your local Finelite representative.

- Use **Occupied Power** for total electrical load calculations. Use this value to estimate branch circuit lighting loads.
- Use **LPD Power** for lighting power density calculations. Only the power attributed to white light is required per NEMA LSD EB 84-202X. Power used toward germicidal disinfection has been removed for this calculation.
- Use **Unoccupied** and **Occupied Power** for energy calculations to determine the power consumed over time based on the use of the space.

Sample Lumen Adjustment Calculation

| Lumen Adjustment Factors 80 CRI | |
|---------------------------------|------|
| Indigo-Clean | |
| 3200K | 0.98 |
| 3700K | 1.00 |
| 4300K | 1.03 |

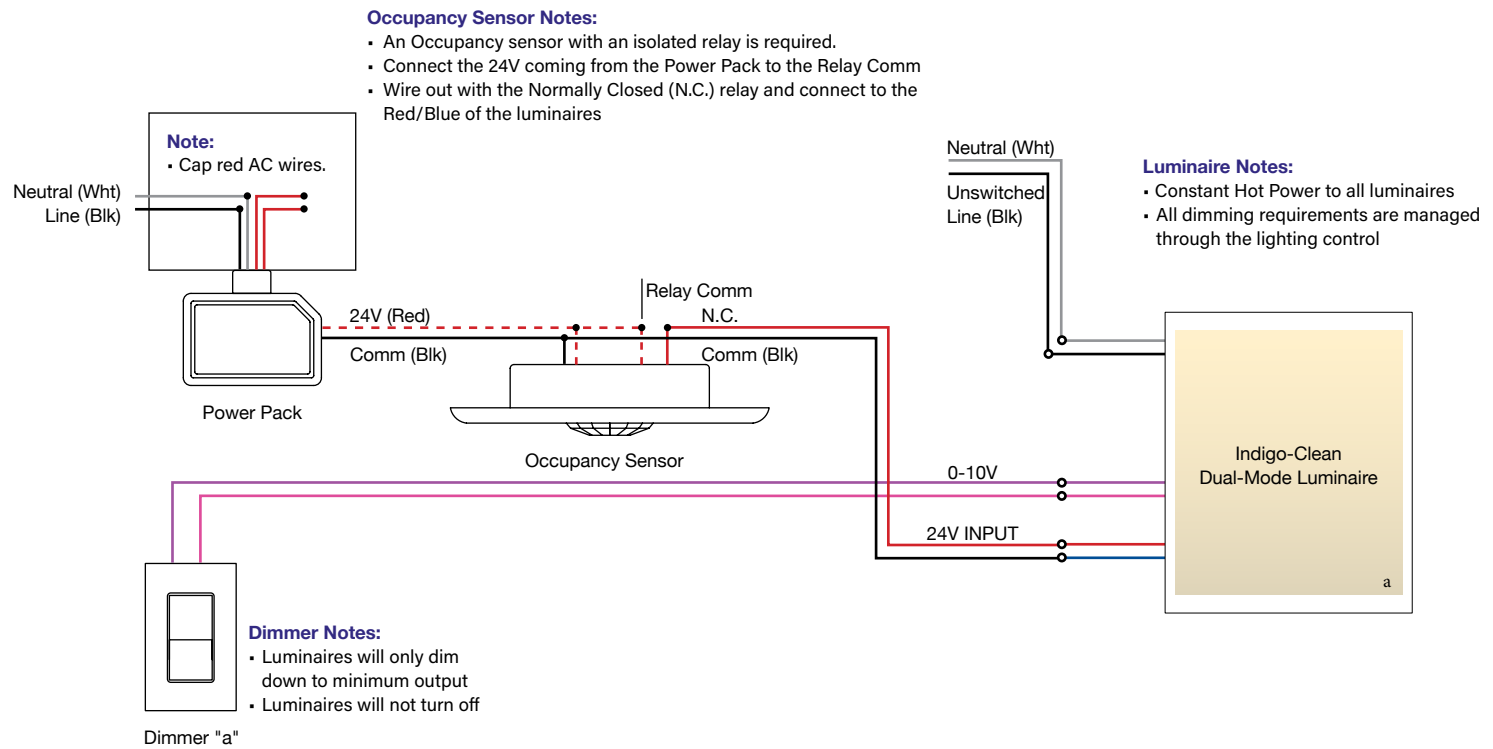
FLUSH: Very High Output (V), 3200K, 80 CRI
Lumen Adjustment Factor: 0.98
Total Light Output: 3446 lm x 0.98 = 3377 lm
Total Light Output per Foot: 862 lm/ft x 0.98 = 845 lm/ft.
watts/foot: 8.8 W/ft.

$$\text{Efficacy} = \frac{845 \frac{\text{lm}}{\text{ft}}}{8.8 \frac{\text{W}}{\text{ft}}} = 96 \text{ lm/W}$$

| | | |
|----------------|----------|-------|
| Submitted by: | | Date: |
| Type: | Project: | |
| Ordering Info: | | |

Indigo Clean Dual Mode - Basic Wiring Diagram

WIRING DIAGRAM



DUAL FEED DETAIL

