
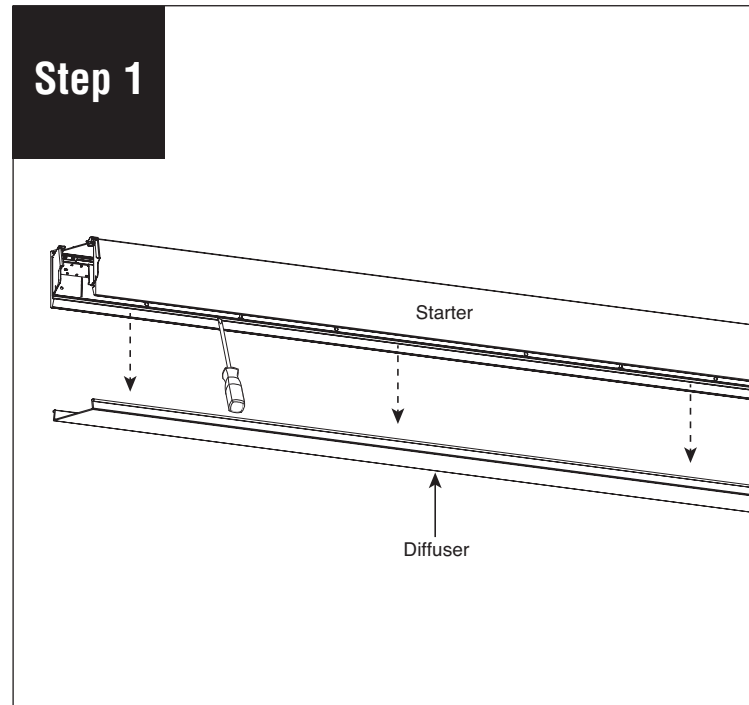


HP-2 Surface Mount Mitered Corner Installation Instructions

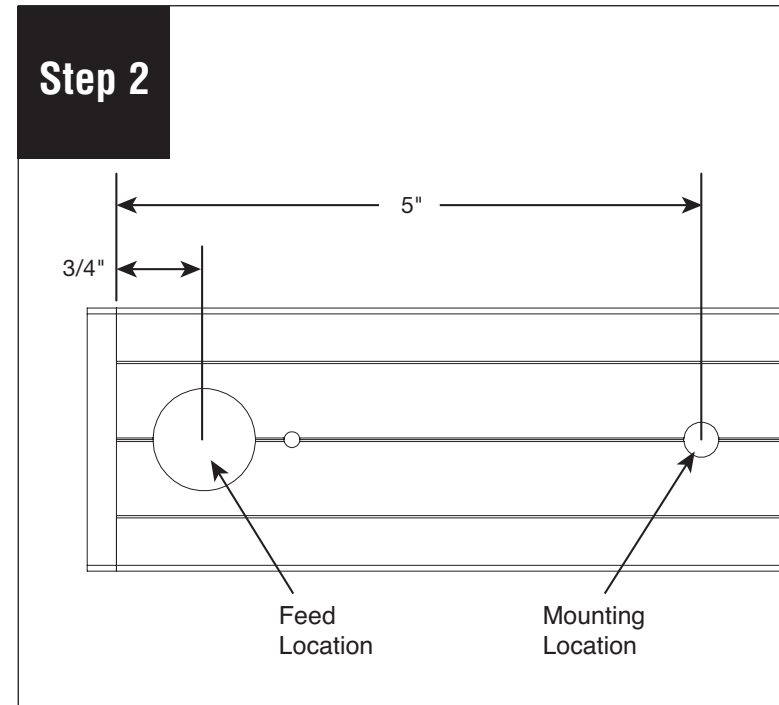
Scan QR code for helpful video(s)



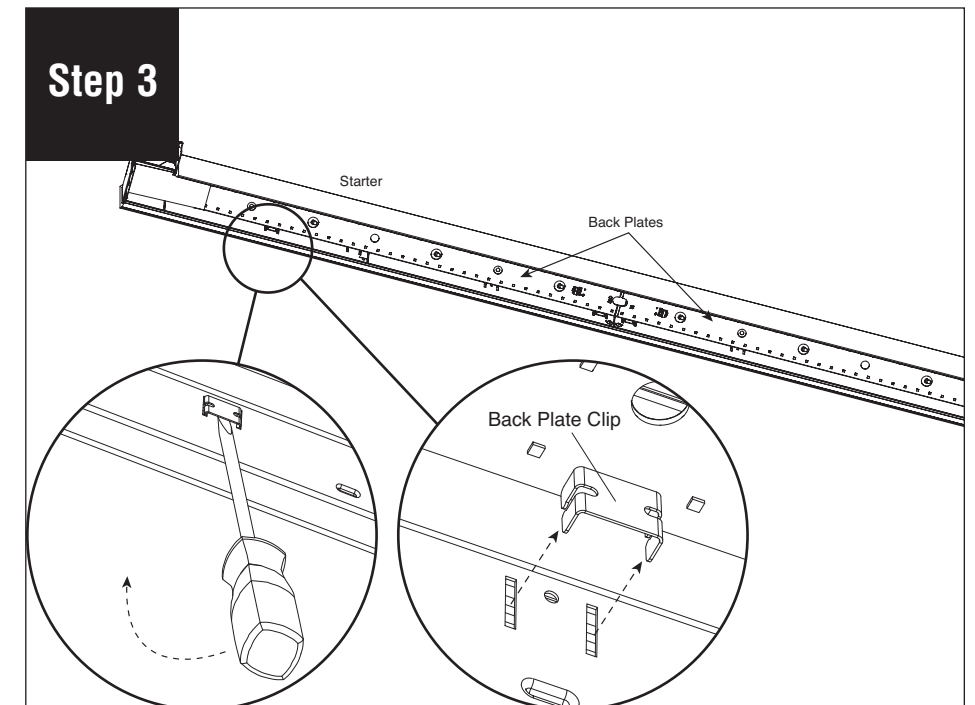
0 - 10V Dimming



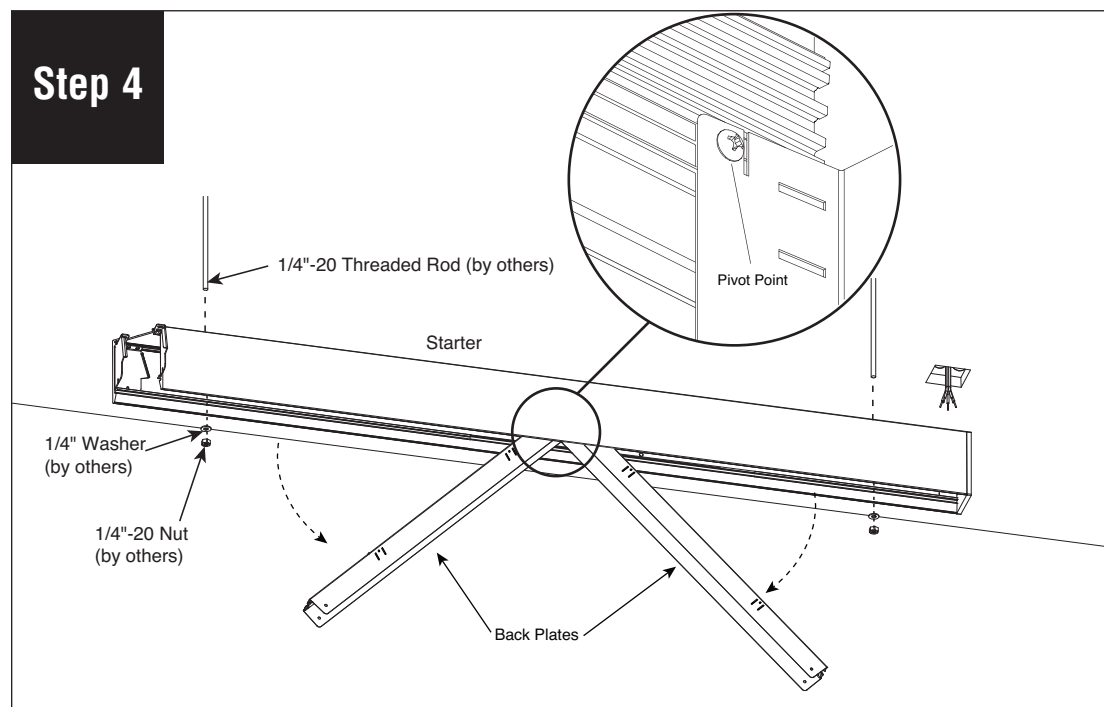
Remove diffuser from starter and set aside to prevent it from getting dirty or damaged.



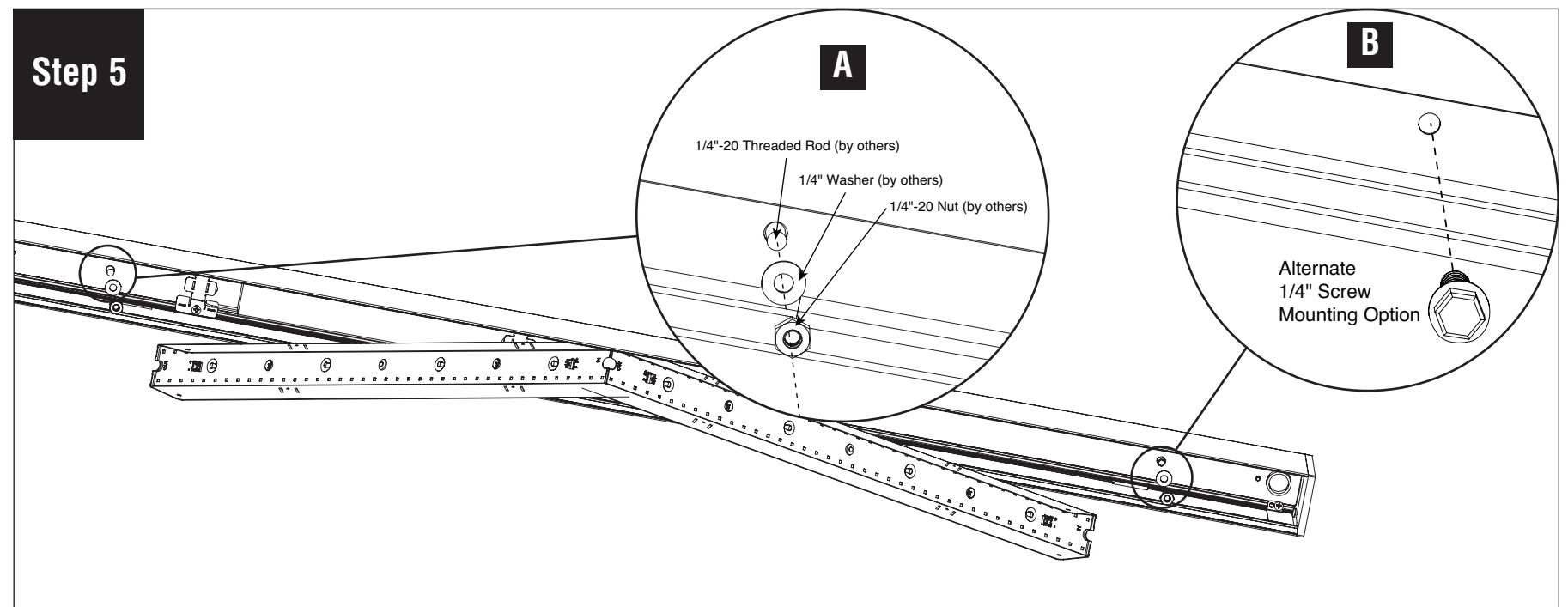
Install J-box and 1/4"-20 threaded rod according to the measurement in the drawing.



Remove back plate clips (provided) on the starter luminaire to release back plates. We recommend using a flat head screwdriver to get them loose. **CAUTION: Do not lose these pieces.**



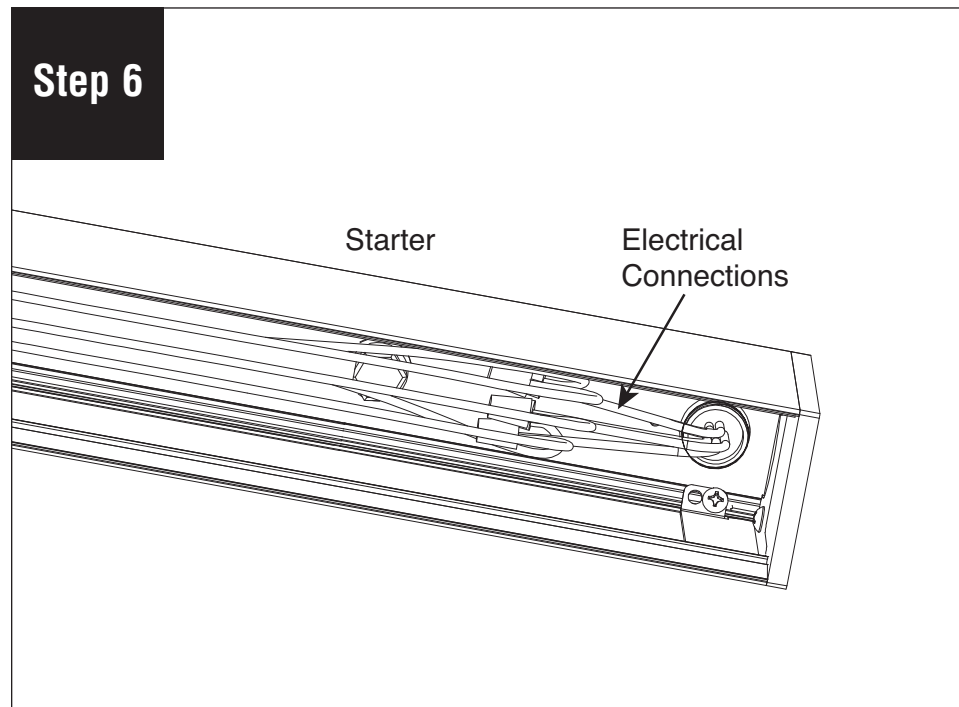
Slowly swing down back plates. **CAUTION: Do not twist back plate when swinging down – it will come out of the support extrusion.** Install the starter luminaire.



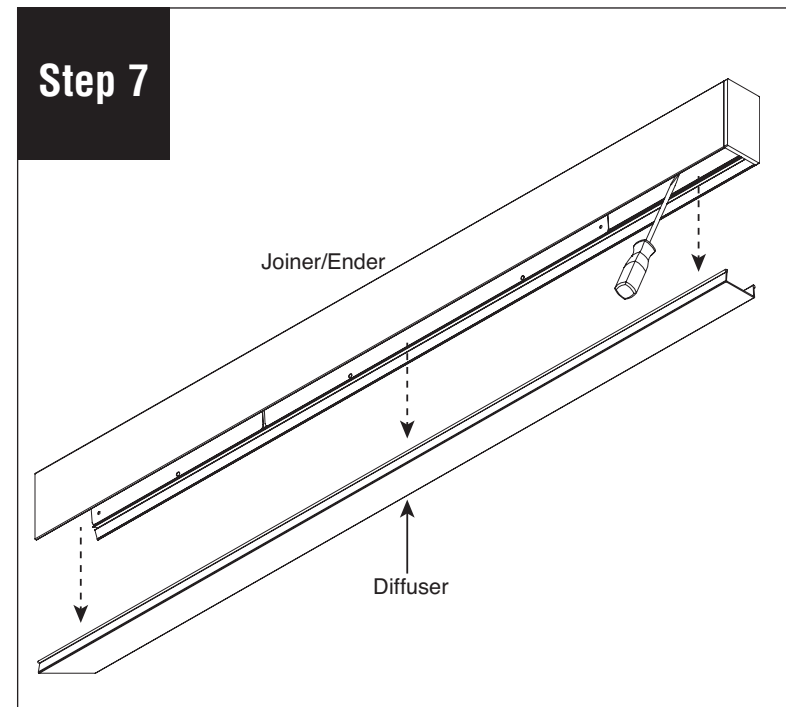
A. Install 1/4" washers (by others) and 1/4"-20 nuts (by others) onto 1/4"-20 threaded rod (by others). **B.** Alternate mounting option - Install 1/4" screw (by others) through mounting hole into proper structurally supported blocking (by others).

Note: All power connections to be installed to local/national codes by a Certified Electrician.

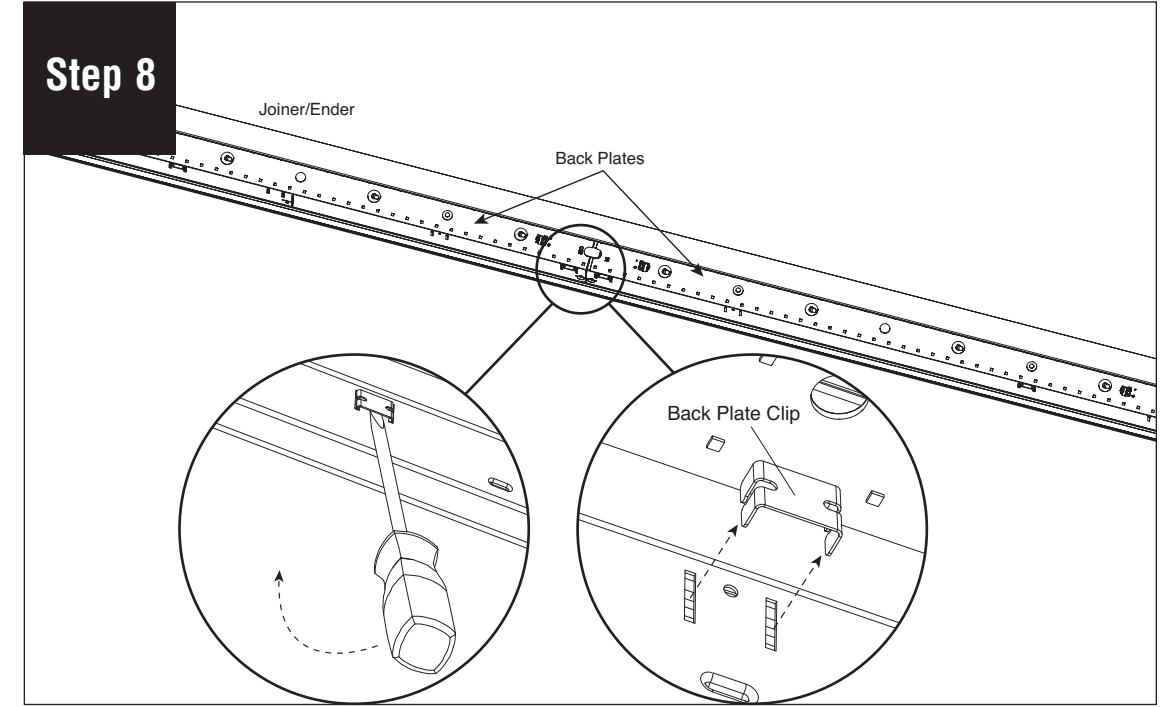
HP-2 Surface Mount Mitered Corner Installation Instructions



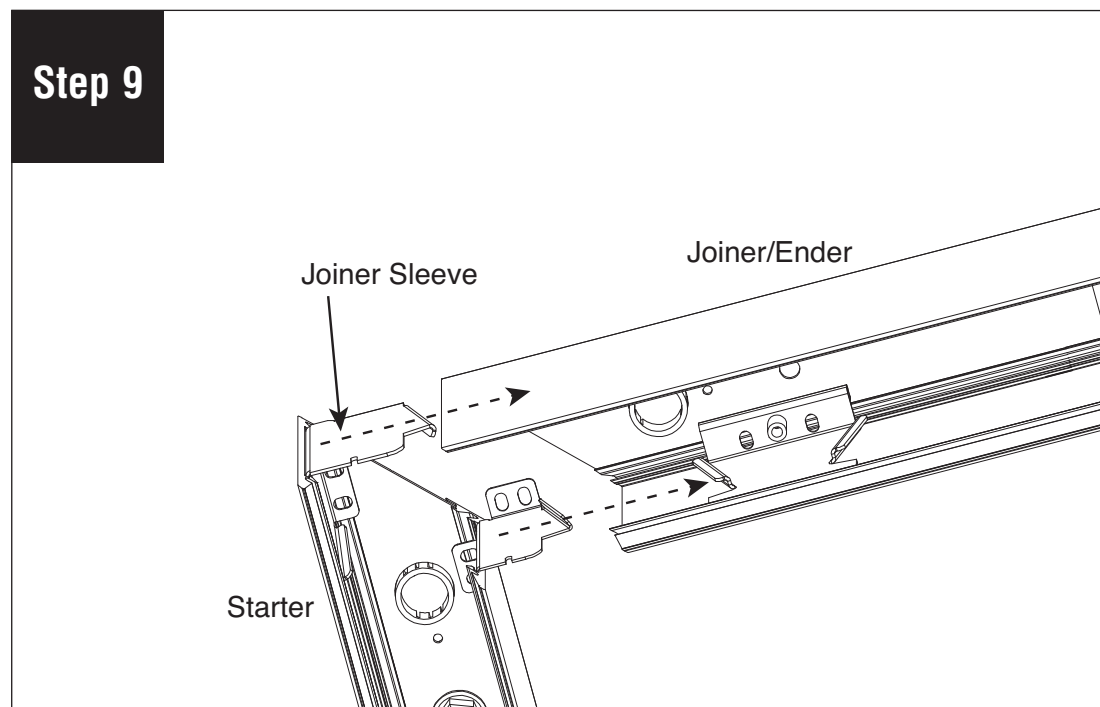
Make electrical connections.



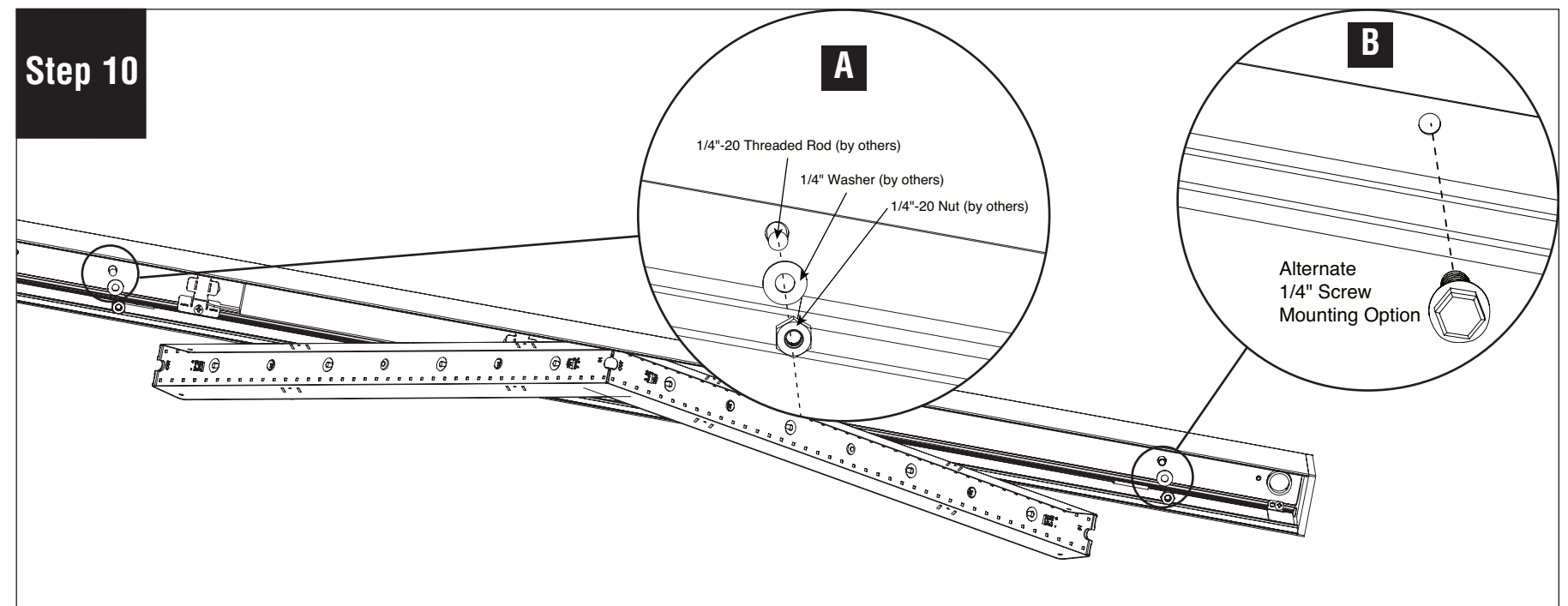
Remove diffuser from joiner/ender and set aside to prevent it from getting dirty or damaged.



Remove back plate clips (provided) from joiner/ender to release back plates. We recommend using a flat head screwdriver to get them loose. **CAUTION: Do not lose these pieces.**



Slide joiner/ender onto starter luminaire.



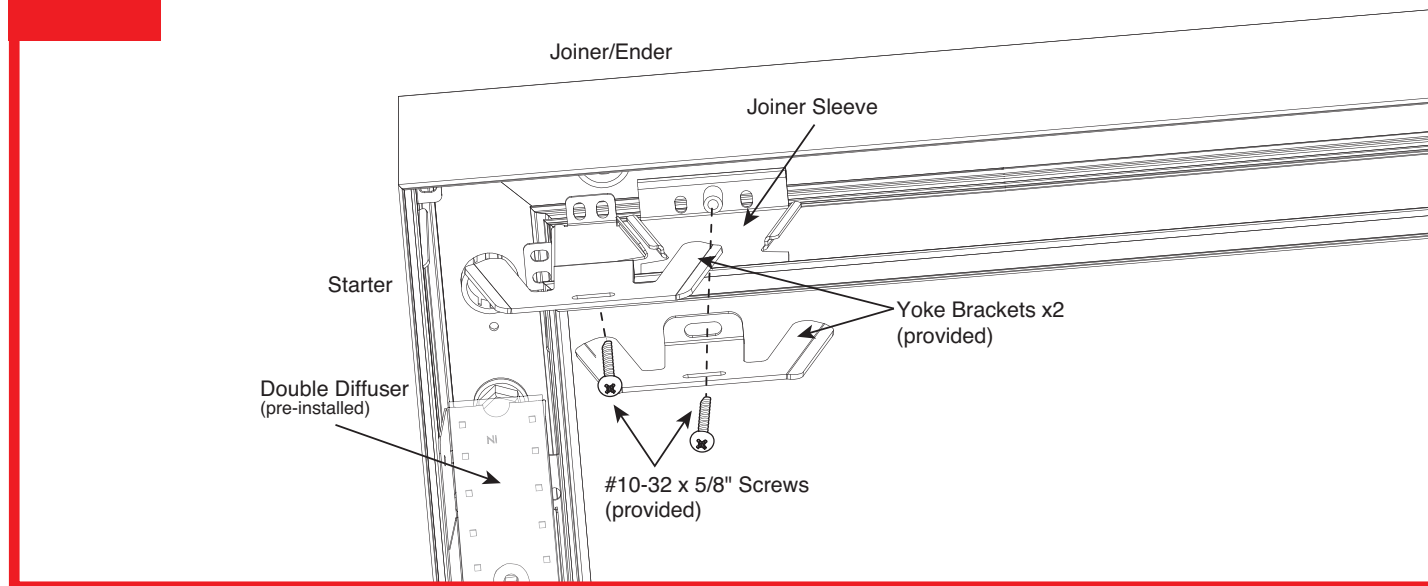
A. Install 1/4" washers (by others) and 1/4"-20 nuts (by others) onto 1/4"-20 threaded rod (by others). **B.** Alternate mounting option - Install 1/4" screw (by others) through mounting hole into proper structurally supported blocking (by others). **NOTE: Do not fully tighten the nuts or screws until the install of the yoke brackets in step 11 is finished.**

Note: All power connections to be installed to local/national codes by a Certified Electrician.

HP-2 Surface Mount Mitered Corner Installation Instructions

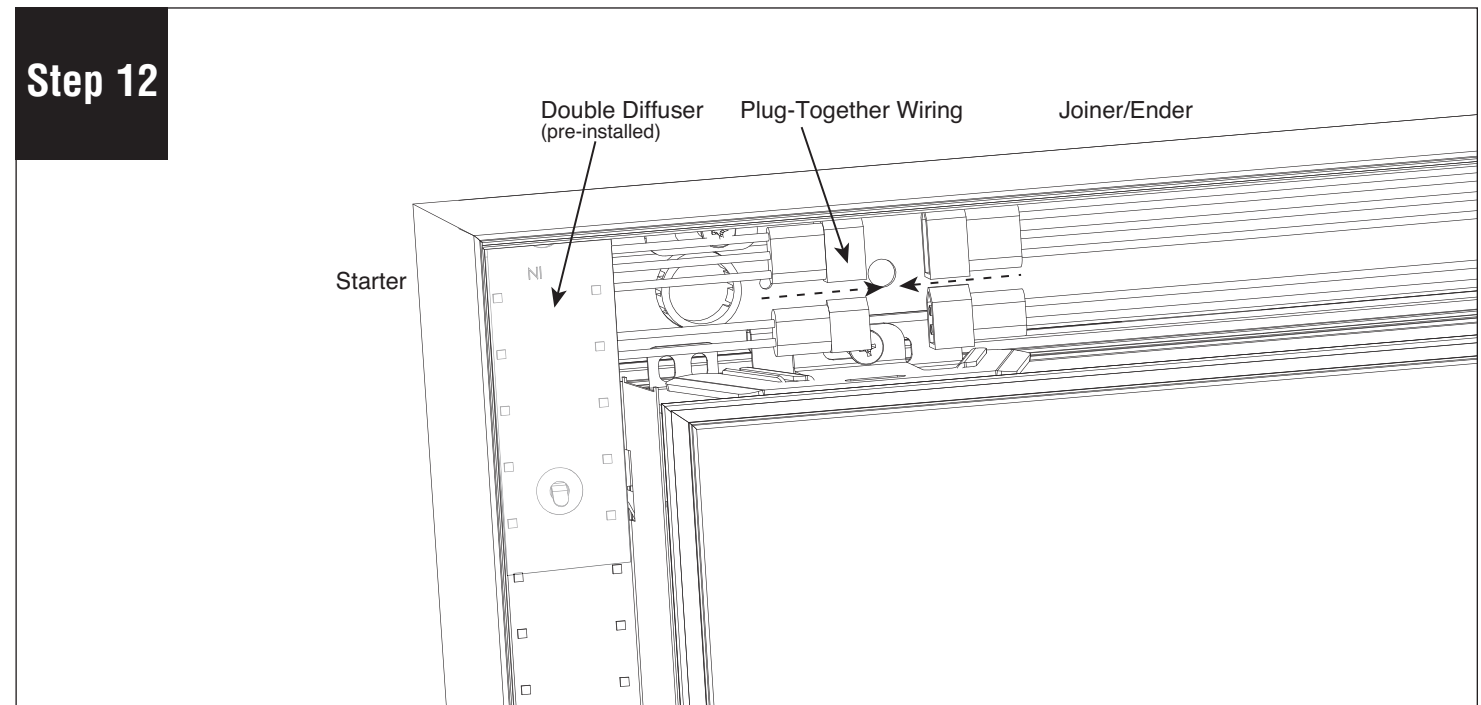
Step 11

IMPORTANT STEP



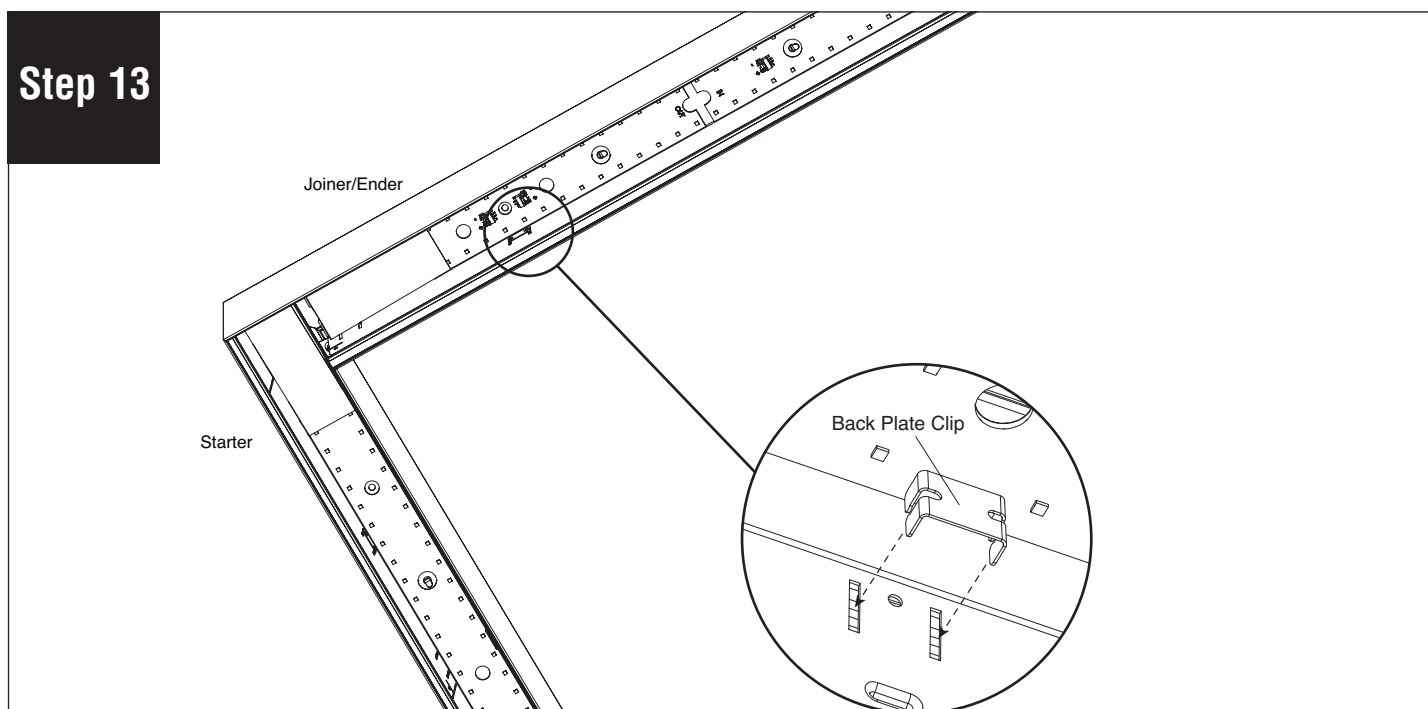
IMPORTANT STEP: Secure joint with two yoke brackets (provided) using #10-32 x 5/8" screws (provided). **CAUTION:** When installed correctly these brackets will pull luminaires together to make a tight joint. Do not over-tighten.

Step 12



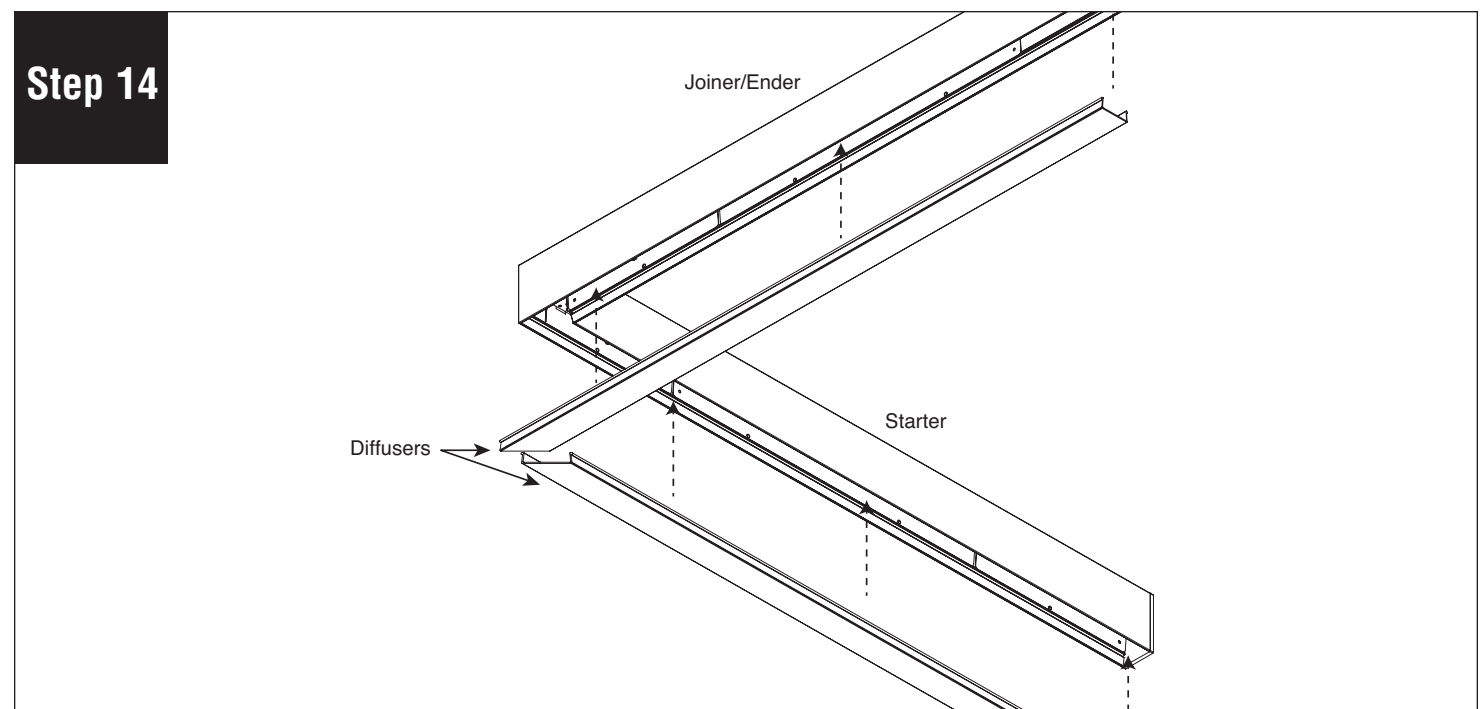
Connect plug-together wiring.

Step 13



Replace all back plates by holding them in their original position and pushing the clips back in. Make sure wire connections are not pinched. (If 1 ft. back plate assembly is near joint, reconnect feed harness to LED board).

Step 14



Reinstall diffusers and turn power on to luminaire.

Note: All power connections to be installed to local/national codes by a Certified Electrician.