

FINELITE

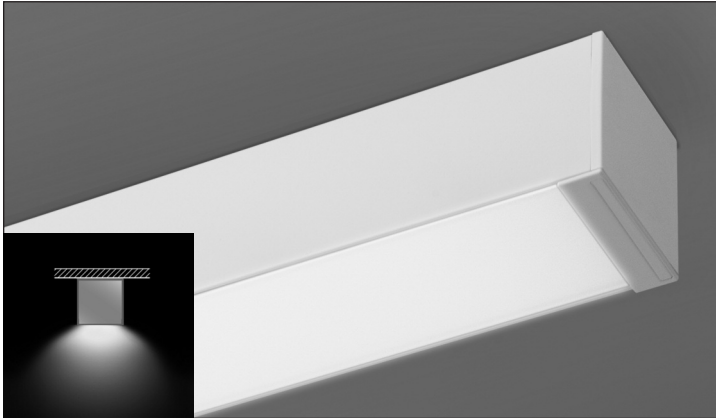
High Performance 4" Wet Location (HP-4 WL) Surface Mount

Date

Project

Type

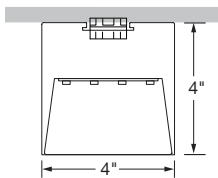
Comments



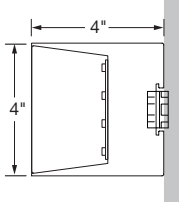
DESCRIPTION

High Performance 4" Aperture Wet Location Surface Mount (HP-4 WL SM) is a linear LED luminaire listed for wet location and IP65 and IK10 rated. HP-4 WL SM delivers uniform illumination with a clean linear aesthetic free of visible attachment hardware.

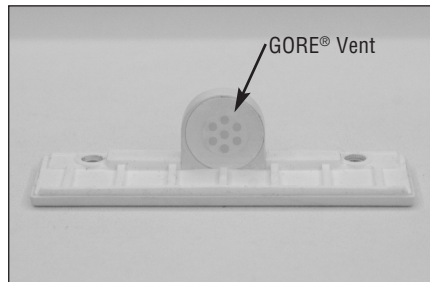
CEILING SURFACE MOUNT



HORIZONTAL MOUNT

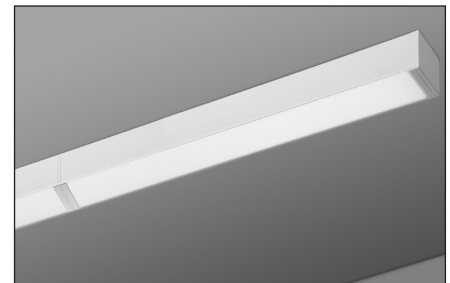


Not suitable for vertical mounting



INTEGRATED GORE® PROTECTIVE VENT

Protective vents are integrated at endcaps and joints to equalize pressure, reduce condensation and protect internal fixture components against water, salts, corrosive liquids and particulates.

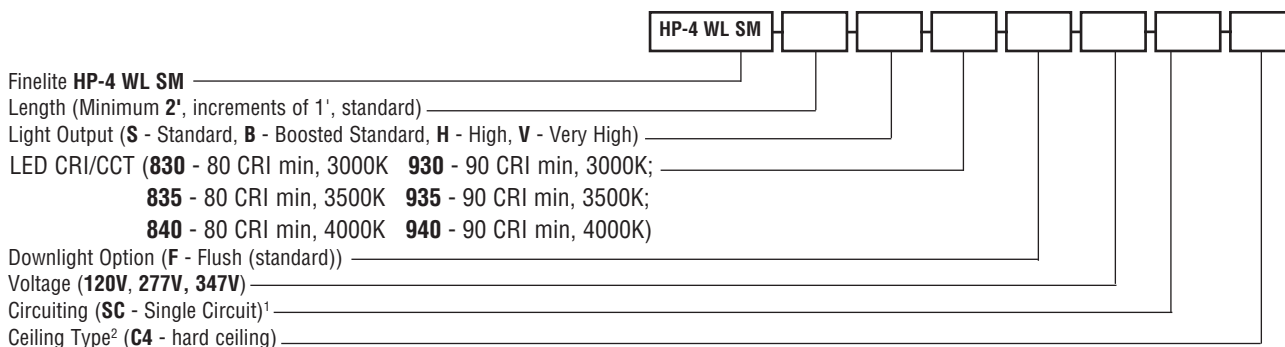


INDEPENDENT OR CONTINUOUS ROWS

2', 3', 4', 5', 6', 7', and 8' section lengths. Independent and continuous rows available. More information on page 2.

ORDERING GUIDE

Sample Number: HP-4 WL SM - 32' - S - 835 - F - 120V - SC - C4



¹ Contact factory for switching options.

² Not Suitable for Vertical Mounting.

A brand of legrand

Finelite, Inc. • 30500 Whipple Road • Union City, CA 94587-1530 • 510 / 441-1100 • Fax: 510 / 441-1510 • www.finelite.com

Due to continuing product improvements, Finelite reserves the right to change specifications without notice. Please visit www.finelite.com for most current data.

FINELITE

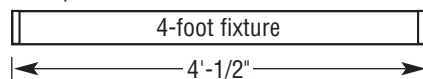
High Performance 4" Wet Location (HP-4 WL) Surface Mount

INDEPENDENT OR CONTINUOUS ROWS

2', 3', 4', 5', 6', 7', and 8' section lengths. Independent and continuous rows available.

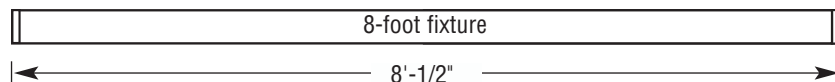
For **independent luminaires** add **1/4"** for each endcap for overall length.

Example: 4' = 4'-1/2"



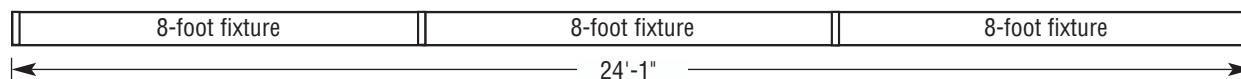
Endcap and Joints = 1/4"

Example: 8' = 8'-1/2"



For **continuous rows** add **1/4"** for each endcap and **1/4"** for each joint for overall length.

Example: 24' = 24'-1"



Above drawing is not to scale.

A brand of  **legrand**

Finelite, Inc. • 30500 Whipple Road • Union City, CA 94587-1530 • 510 / 441-1100 • Fax: 510 / 441-1510 • www.finelite.com

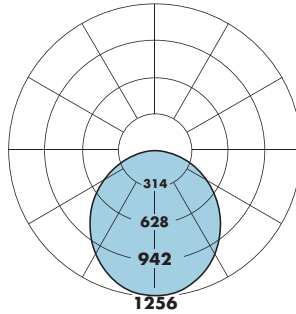
Due to continuing product improvements, Finelite reserves the right to change specifications without notice. Please visit www.finelite.com for most current data.

FINELITE

High Performance 4" Wet Location (HP-4 WL) Surface Mount

PHOTOMETRY

Very High Output - 4' Luminaire
 Efficacy (Lumen per watt): 94
 Total luminaire output: 3456 Lumens (864 lumens/foot)
 36.9 Watts (9.2 watts/foot)
 Peak Candela Value: 1256 @ 0°
 CCT: 3500K
 ITL LM79 Report 90390



CANDLEPOWER SUMMARY						
	0.0	22.5	45	67.5	90	Flux
0	1256	1256	1256	1256	1256	
5	1250	1250	1250	1249	1249	119
15	1203	1195	1199	1199	1195	338
25	1107	1095	1103	1098	1094	507
35	976	964	968	960	957	603
45	814	804	804	797	792	618
55	629	622	620	612	607	553
65	430	426	422	417	414	417
75	226	225	223	222	224	237
85	52	54	55	56	57	64
90	0	0	0	0	0	

Total Light Output, 3500K, 80 CRI (Lumens) - 4' Luminaire			
S*	B*	H*	V**
1415	1779	2688	3456

Light Output, 3500K, 80 CRI (Lumens Per Foot)			
S*	B*	H*	V**
354	445	672	864

Power (Watts Per Foot)			
S*	B*	H*	V**
3.6	4.6	7.1	9.2

Efficacy, 3500K, 80 CRI (Lumens Per Watt)			
S*	B*	H*	V**
98	97	95	94

* Family Correlation based on 4' luminaire 3500K Very High Output (V) test - 120V.

** Correlation based on ITL report: 90390.

S - Standard Output, B - Boosted Standard Output, H - High Output, V - Very High Output

Lumen Adjustment Factors - 80 CRI	
3000K	0.985
3500K	1.000
4000K	1.032

Lumen Adjustment Factors - 90 CRI	
3000K	0.746
3500K	0.760
4000K	0.789

Apply a lumen adjustment factor to calculate lumens for the desired CCT and CRI.

**SAMPLE LUMEN
ADJUSTMENT CALCULATION**
 High Output (H), 4000K, 90 CRI
 Lumen Adjustment Factor = 0.789

$$\text{Total Light Output} = 2688 \text{ lm} \times 0.789 = 2121 \text{ lm}$$

$$\text{Total Light Output per Foot} = 672 \text{ lm/ft} \times 0.789 = 530 \text{ lm/ft}$$

$$\text{watts/foot} = 7.1 \text{ W/ft}$$

$$\text{Efficacy} = \frac{530 \frac{\text{lm}}{\text{ft}}}{7.1 \frac{\text{W}}{\text{ft}}} = 75 \text{ lm/W}$$

A brand of **legrand**

Finelite, Inc. • 30500 Whipple Road • Union City, CA 94587-1530 • 510 / 441-1100 • Fax: 510 / 441-1510 • www.finelite.com

Due to continuing product improvements, Finelite reserves the right to change specifications without notice. Please visit www.finelite.com for most current data.

© 2021 FINELITE, INC. ALL RIGHTS RESERVED. Form CTK0214 VS. EFFECTIVE DATE: 08/21

SPECIFICATIONS

WET LOCATION: UL wet location listed and IP65 rated.

IMPACT PROTECTION: IK10

SPECIAL FEATURES: Integrated GORE® protective vent allows moisture to escape the fixture without letting water in and protects internal components from salts, corrosive liquids, and particulates.

TEMPERATURE RATING: Rated for -20°C to 40°C

CONSTRUCTION: Precision-cut 6061-T6 extruded aluminum body. Internal joiner system, plug-together wiring, standard.

ENDCAPS: Flat diecast aluminum endcaps add 0.25" to each end of luminaire. Each joints add 0.25" to overall length.

REFLECTORS: Die-formed 20-gauge cold-rolled steel reflectors finished in 96LG High Reflectance white powder coat paint.

DOWNLIGHT OPTION: Internal gaskets prevent moisture and debris. 8' maximum lens length. Flush frost white snap-in impact resistant acrylic lens standard, 63% transmissive, 99% diffusion.

LIGHT OUTPUT: Four lumen packages available, Standard Output (**S**), Boosted Standard Output (**B**), High Output (**H**), and Very High Output (**V**). Light engines are replaceable.

DRIVER: Replaceable 120V/277V and 347V Constant Current Reduction dimming driver standard. Can be wired dimming or non-dimming. 0-10V dimming controls with a range of 10%- 100%. Dimming to 1% available; consult factory. Driver is fully accessible from below the ceiling. Power Factor: ≥0.9. Total Harmonic Distortion (THD) <20%.

ELECTRICAL: Optional emergency to generator, internal generator transfer switch, and nightlight wiring.

MOUNTING: Drywall or concrete surfaces: 1/4 - 20 lag bolt (provided by others) or 1/4 - 20 stud and nut (provided by others). Gasketed washer provided to maintain water seal of fixture at mounting hole locations. Not suitable for vertical mounting.

FINISHES: Finelite Signal White (**SW**) powder coat standard. Finelite Black (RAL 9005) with semi gloss fine texture (**FB**)¹ and Satin Aluminum (**SA**)¹ are available. Optional Adders: 185 RAL colors¹.

LENGTHS: 2', 3', 4', 5', 6', 7', and 8' section lengths. Independent and continuous rows available.

LABELS: Luminaire and electrical components are ETL-listed conforming to UL1598 in the U.S.A. and CAN/CSA C22.2 No. 250.0 in Canada. In accordance with NEC Code 410.130 (G), this luminaire contains an internal driver disconnect. UL wet location listed and IP65. Finelite products use electronic components that are RoHS compliant, and the mechanical components of the luminaire have been verified to not knowingly contain any restricted substances listed per RoHS Directive 2015/863.

WEIGHT: 3.20 lb/ft.

WARRANTY: 5-year performance-based warranty on all standard components.

¹ 20 business days lead time for color