

# HPO

High Performance  
3.5" Round

**FINELITE**<sup>®</sup>  
*Better Lighting*



A brand of **legrand**

# High Performance 3.5" Round (HPO)

## LED Collection

The HPO LED pendant luminaire with indirect/direct illumination is an advanced solution that delivers unprecedented performance from a micro round 3.5" diameter form factor. Featuring a 2.5" aperture, HPO provides glare free illumination from a flush or round lens. Engineered with contractors in mind, HPO is equipped with an integral driver design for reduced installation time and cost. The small form and high performance of HPO unlocks the potential for new design options.

### **Declare 2.0**

This product is enrolled in the International Living Future Institute (ILFI) Declare 2.0 Program and is third-party verified.



**High Performance:**  
total light output of  
**8516**  
per 4' section

**High Efficacy:** Up to  
**127**  
Lumens per watt

HPO is equipped with advanced optical options and a unique LED configuration for superior illumination

Features

# Tailored Output

Optimizing lighting levels to accommodate architectural design elements and code requirements

## Static and 0-10V Tunable White

- Standard (**S**)
- Boosted Standard (**B**)
- High (**H**)
- Very High (**V**)

## FineTune FMX Controlled Tunable White

- Boosted Standard (**B**)
- Very High (**V**)

Features

# Tailored Color

Set white light and intensity to the preferences of the people in the space

- Static White light options at 3000K and 4000K CCT
- Tunable White options for two-source tunable white light between 2700K and 6500K CCT
- 80+ and 90+ CRI available

Features

# Tailored Length

Enhance architectural interiors with perfectly sized luminaires

- Minimum section length is 2' and maximum is 12'
- Tailored increments of 1'

Features

# Tailored Control

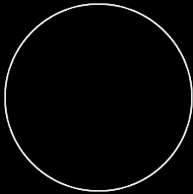
Enhance application control with integrated sensors, dimming, and tunable white offerings

- Dimming from 100% to 10% standard; 1% available
- Industry-leading, pre-qualified drivers and controls tailored to meet project needs
- Integrated networked daylight and occupancy sensor options available
- Simplified white light color tuning design and installation with the FineTune controls system

# HPO Round & Flush

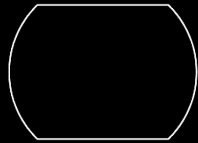
This line of light luminaire delivers excellent performance and is equipped with a unique LED configuration for superior illumination. Output can be enhanced with advanced optical options.

## Standard Aesthetic Options



**Round**

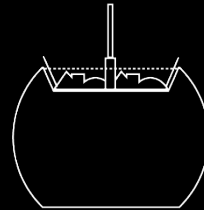
Round top and bottom diffusers



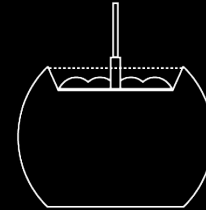
**Flush**

Flush top and bottom diffusers

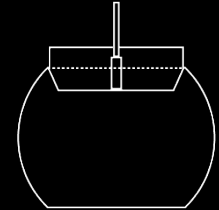
## Other Optical Options



**Asymmetric  
Right or Left with  
Top Glow**



**Widespread  
Optic**

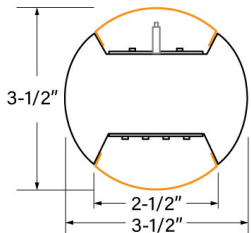


**Top Glow**



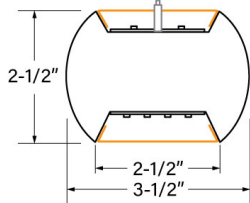
# Cross Sections

**Indirect/Direct  
Round**



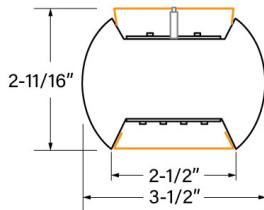
**Flush Downlight  
Diffuser (standard)**

**Flush**



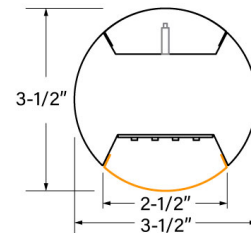
**Flush Downlight  
Diffuser (standard)**

**Top Glow**



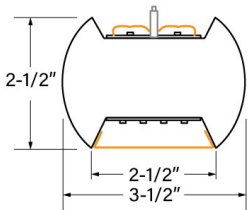
**Flush Downlight  
Diffuser (standard)**

**Direct**



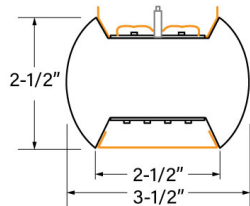
**Round Bottom  
Diffuser (standard)**

**Widespread Optic**



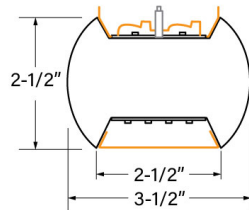
**Flush Downlight  
Diffuser (standard)**

**Widespread Optic  
with Top Glow**

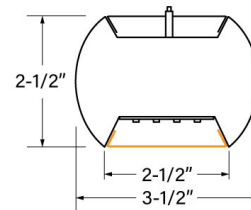


**Flush Downlight  
Diffuser (standard)**

**Asymmetric Left or Right  
with Top Glow**



**Flush Downlight  
Diffuser (standard)**



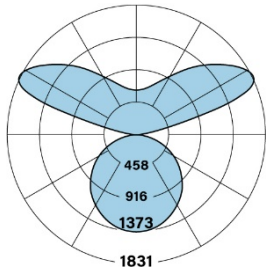
**Flush Bottom Diffuser  
(standard)**

# Performance

## Indirect/Direct

### Widespread Optic with Flush Photometry

4' Luminaire 3500K



#### HPO-P-ID-V-V-835-WSO-F

Uplight: Widespread Optic / Downlight: Flush

Distribution: 51% Up (V) / 49% Down (V)

Efficacy: 119 lm/W

Uplight: 4223 lumens (1055 lumens/ft)

Downlight: 4005 lumens (1001 lumens/ft)

Total luminaire output: 8228 lumen

69.0 watts

Peak Candela Value: 1820 @ 115°

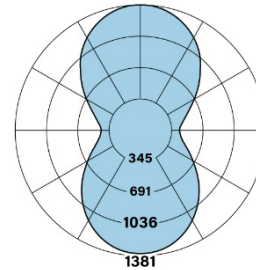
CRI: 80 / CCT: 3500K

ITL LM79 Report 92549

## Indirect/Direct

### Round Top with Round Bottom Photometry

4' Luminaire 3500K



#### HPO-P-D-V-V-835-RT-RB

Uplight: Round Top / Downlight: Round Bottom

Distribution: 51% Up (V) / 49% Down (V)

Efficacy: 123 lm/W

Uplight: 4331 lumens (1079 lumens/ft)

Downlight: 4159 lumens (1040 lumens/ft)

Total luminaire output: 8490 lumen

69.0 watts

Peak Candela Value: 1381 @ 180°

CRI: 80 / CCT: 3500K

ITL LM79 Report 93792

# The Finelite LED Difference & Commitment to You



10-Year performance-based warranty



Dimming 100%-10% standard



Replaceable LEDs



Focus on sustainability