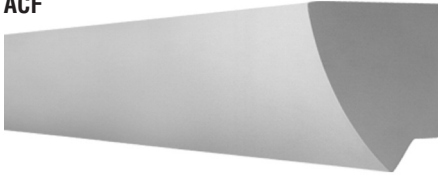


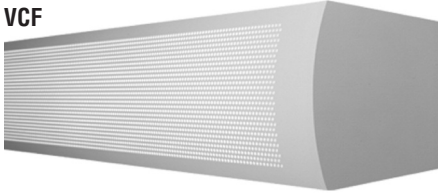


ACF



Angled Curved Fascia - Solid (SF)

VCF



Vertical Curved Fascia - Perforated (PF)

Signal White is standard finish

Date

Project

Type

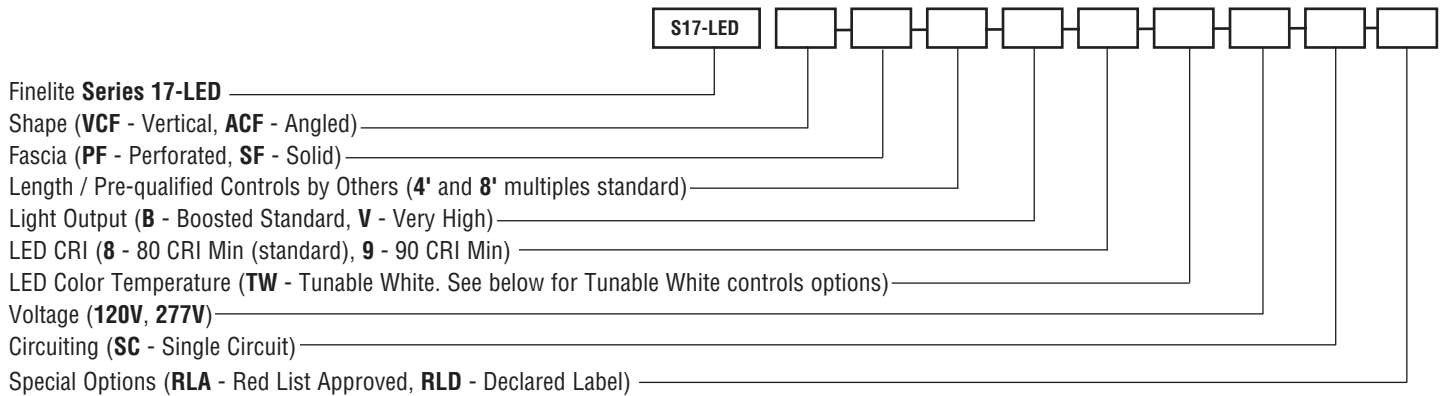
Comments

DESCRIPTION

Light up corridors, stairwells and reception areas without glare and in high style with Series 17 LED ADA Wall Mount luminaires. Choose from Angled Curved Fascia (ACF) or Vertical Curved Fascia (VCF) in solid or perforated design. Series 17 LED uses mid-powered LEDs for long life and evenly distributed illumination. This Product is enrolled in the International Living Future Institute (ILFI) Declare 2.0 Program and is third-party verified with options achieving Red List Approved and Declared status.

ORDERING GUIDE

Sample Number: S17-LED - VCF - PF - 4' - B - 8 - TW - 277V - SC - RLA



TUNABLE WHITE CONTROLS OPTIONS: SELECT ONE



FineTune controller with FineTune DMX Driver

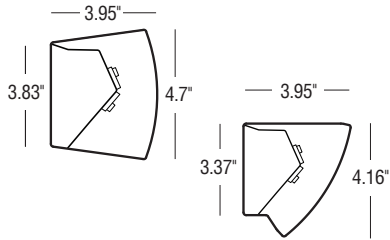
OR

- Controls by others with pre-qualified DMX driver
- Controls by others with pre-qualified DALI driver
- Controls by others with pre-qualified PoE setup
- Controls by Lutron with pre-qualified Lutron driver

A brand of LeGrand

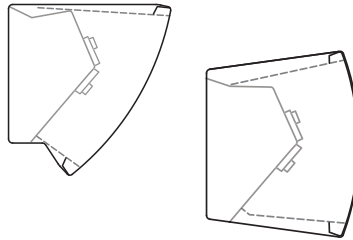
Finelite, Inc. • 30500 Whipple Road • Union City, CA 94587-1530 • (510) 441-1100 • Fax: (510) 441-1510 • www.finelite.com

LUMINAIRE FEATURES



DIMENSIONS AND LIGHT ENGINE

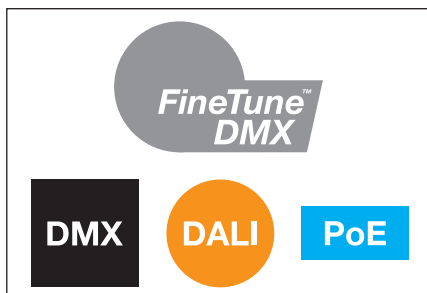
Extending less than 4" from the wall, Series 17 is ADA compliant and uses mid-powered LEDs yielding long life and even light distribution.



DIFFUSERS

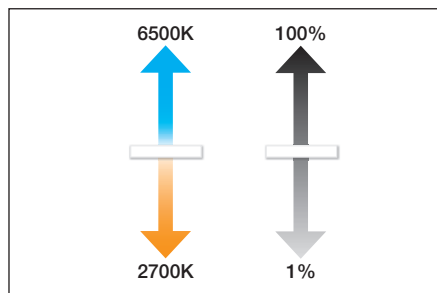
Standard with frosted acrylic diffuser on the top and bottom openings.

TUNABLE WHITE FEATURES



MULTIPLE CONTROL ARCHITECTURES

Finelite's FineTune™ DMX, qualified DMX, DALI (open and proprietary), or PoE (Power over Ethernet).



TUNABLE WHITE

Any CCT between 2700K and 6500K with excellent CRI and R9 values; dimming from 100% to 1%.



FINETUNE SYSTEM

Award-winning control system, which includes intuitive wall mounted controller, power control center, driver, and mobile app to easily tailor lighting to match user preference.

ACF SF PHOTOMETRY-4' Luminaire

S17-LED-ACF-SF

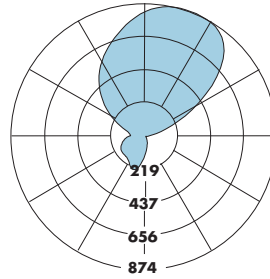
Very High Output - 120V

Total luminaire output: 2673 lumens (668 lumens/foot)

Peak Candela Value: 874 @ 165°

CCT: 3500K

Source Report: ITL 85160 (Family Correlation)



CANDLEPOWER SUMMARY						
	0	22.5	45.0	67.5	90.0	Flux
0	107	107	107	107	107	
5	79	86	107	133	144	11
15	40	53	103	184	217	33
25	16	28	94	207	228	52
35	5	12	81	193	196	61
45	1	4	64	165	185	63
55	0	0	47	146	186	64
65	0	0	30	129	180	62
75	0	0	16	109	160	54
85	0	0	4	85	133	43
90	0	0	0	69	113	
95	5	9	25	69	102	47
105	74	116	116	110	124	119
115	238	289	240	209	205	238
125	483	495	377	323	314	355
135	721	669	516	439	425	421
145	842	773	637	544	528	412
155	871	828	730	640	617	339
165	874	852	791	726	701	222
175	850	842	819	796	787	78
180	824	824	824	824	824	

Total Light Output, 3500K, 80 CRI (Lumens) - 4' Luminaire	
B*	V**
1376	2673

Linear Light Output, 3500K, 80 CRI (Lumens Per Foot)	
B*	V**
344	668

Power, 3500K, 80 CRI (Watts Per Foot)	
B*	V**
5.1	10.2

Efficacy, 3500K, 80 CRI (Lumens Per Watt)	
B*	V**
68	65

B - Boosted Standard Output, V - Very High Output

** Family Correlation based on 4' luminaire 3500K Very High Output (V) test - 120V.

* Based on ITL report: 85160

Note: ACF-PF Luminaire Available.

Lumen Adjustment Factors - 80 CRI	
2700K	0.968
3000K	0.985
3500K	1.000
4000K	1.032
6500K	1.032

Lumen Adjustment Factors - 90 CRI	
2700K	0.731
3000K	0.746
3500K	0.760
4000K	0.789
6500K	0.789

Apply a lumen adjustment factor to calculate lumens for the desired CCT and CRI.

SAMPLE LUMEN ADJUSTMENT CALCULATION

Boosted Standard Output (B), 4000K, 90 CRI

$$\text{Lumen Adjustment Factor} = 0.789$$

$$\begin{aligned} \text{Total Light Output} &= \\ 1376 \text{ lm} \times 0.789 &= 1086 \text{ lm} \end{aligned}$$

$$\begin{aligned} \text{Total Light Output per Foot} &= \\ 344 \text{ lm/ft} \times 0.789 &= 271 \text{ lm/ft} \end{aligned}$$

$$\text{watts/foot} = 5.1 \text{ W/ft}$$

$$\text{Efficacy} = \frac{271 \frac{\text{lm}}{\text{ft}}}{5.1 \frac{\text{W}}{\text{ft}}} = 53 \text{ lm/W}$$

VCF SF PHOTOMETRY - 4' Luminaire

S17-LED-VCF-SF

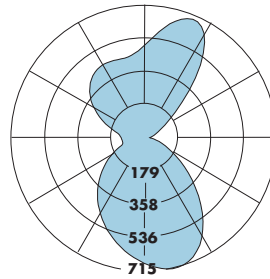
Very High Output - 120V

Total luminaire output: 3222 lumens (806 lumens/foot)

Peak Candela Value: 708 @ 15°

CCT: 3500K

Source Report: ITL 85158 (Family Correlation)



CANDLEPOWER SUMMARY						
	0	22.5	45.0	67.5	90.0	Flux
0	687	687	687	687	687	
5	706	700	684	668	663	65
15	708	696	656	618	607	185
25	637	639	597	552	545	273
35	495	524	509	473	473	310
45	323	379	400	388	396	293
55	175	235	287	299	314	238
65	73	117	183	212	231	165
75	12	35	96	133	156	93
85	0	0	26	97	150	55
90	0	0	0	100	154	
95	0	0	18	110	163	59
105	0	2	79	181	227	100
115	8	36	163	264	313	159
125	55	156	258	337	392	221
135	196	361	350	391	444	274
145	478	550	425	419	466	290
155	660	631	478	432	458	241
165	660	617	510	453	450	151
175	572	556	522	495	487	50
180	524	524	524	524	524	

Total Light Output, 3500K, 80 CRI (Lumens) - 4' Luminaire	
B*	V**
1658	3222

Linear Light Output, 3500K, 80 CRI (Lumens Per Foot)	
B*	V**
415	806

Power (Watts Per Foot)	
B*	V**
5.0	10.1

Efficacy, 3500K, 80 CRI (Lumens Per Watt)	
B*	V**
82	80

B - Boosted Standard Output, V - Very High Output

** Family Correlation based on 4' luminaire 3500K Very High Output (V) test - 120V.

* Based on ITL report: 85158

Note: VCF-PF Luminaire Available.

Lumen Adjustment Factors - 80 CRI	
2700K	0.968
3000K	0.985
3500K	1.000
4000K	1.032
6500K	1.032

Lumen Adjustment Factors - 90 CRI	
2700K	0.731
3000K	0.746
3500K	0.760
4000K	0.789
6500K	0.789

Apply a lumen adjustment factor to calculate lumens for the desired CCT and CRI.

SAMPLE LUMEN ADJUSTMENT CALCULATION

Boosted Standard Output (B), 4000K, 90 CRI

$$\text{Lumen Adjustment Factor} = 0.789$$

$$\text{Total Light Output} = 1658 \text{ lm} \times 0.789 = 1308 \text{ lm}$$

$$\text{Total Light Output per Foot} = 415 \text{ lm/ft} \times 0.789 = 327 \text{ lm/ft}$$

$$\text{watts/foot} = 5.0 \text{ W/ft}$$

$$\text{Efficacy} = \frac{327 \frac{\text{lm}}{\text{ft}}}{5.0 \frac{\text{W}}{\text{ft}}} = 65 \text{ lm/W}$$

SPECIFICATIONS

CONSTRUCTION: Fixture channel is 6063-T6 extruded aluminum. Fascia covers are die-formed 20-gauge steel. Mounting clips are constructed from 22-gauge die-formed steel. All components are hard-tooled to tolerances of +/- 0.010".

ENDCAPS: Flat endcap, 14-gauge die-formed steel, adds 0.1" to each end.

REFLECTORS: 96W standard reflector, die-formed painted steel, 96% reflectance white finish. Virgin acrylic UV stabilized lensed diffuser behind perforated fascia is standard.

DIFFUSERS: Standard with top 0.080" and bottom 0.060" frosted acrylic diffusers

LIGHT OUTPUT: Two lumen packages available Boosted Standard (**B**), and Very High (**V**). A separate chart summarizes lumen distribution and wattage. Light engines are replaceable.

LUMEN MAINTENANCE: 90% of initial light output (L90) at 100,000+ hours; 70% of initial light output (L70) at 200,000+ hours.

TUNABLE WHITE DRIVER: Replaceable LED driver. Driver is fully accessible from below the ceiling. 120/277V. Power factor ≥0.90. Total Harmonic Distortion (THD): <20%. Dimming Range: 100% - 1%. Expected driver lifetime: 100,000 hours.

LUTRON DRIVER OPTIONS: LUTDTW (1% T-Series 2-Channel Digital Tunable White (PSQ Series)).

ELECTRICAL:

Emergency Option DMX: Battery backup only.

Emergency Option DALI: Battery backup, emergency-to-generator/ inverter wiring.

Emergency Option LUTRON: Battery backup, emergency-to-generator/ inverter wiring.

Emergency Option PoE: Contact factory.

Backup Battery: Factory-choice low-profile battery backup delivers 1337 lumens (ACF) or 1611 (VCF) for Solid Fascia (SF) and 1653 lumens (ACF) or 1798 (VCF) for Perforated Fascia (PF). Minimum luminaire length for battery pack: 8'. The downlight will be illuminated in the 4' section. Backup battery will operate 6500K in an emergency.

MOUNTING: Standard with mounting clips to the wall and not visible from normal viewing angles once installed. One mounting clip is provided for every 16 inches of luminaire for a secure connection to the wall. Luminaire is snapped into place on the mounting clips and secured using locking screws.

DMX INTERCONNECTION CABLES: Luminaires are prewired with plug-and-play interconnection cables to support easy plug-together joining of fixture runs. If a non-FineTune DMX system has been specified, a DMX to RJ45 converter is provided.

FINISHES: Finelite Signal White is standard. Optional Adder: 185 finishes available from Tiger Drylac's RAL color chart.

FEED: Standard with one 18-gauge single-circuit feed. 14-gauge feed used when fixture current exceeds 5 amps. DMX and power feed at same location (standard). DMX feeds cannot be cut or spliced. DMX feeds should be ordered based on fixed lengths.

LENGTHS / PRE-QUALIFIED CONTROLS BY OTHERS: 4' and 8' sections can be combined to make longer runs.

LABELS: Fixture and electrical components are ETL-listed conforming to UL 1598 in the U.S.A. and CAN/CSA C22.2 No. 250.0 in Canada. In accordance with NEC Code 410.73 (G), this luminaire contains an internal driver disconnect. Damp Location. Finelite products use electronic components that are RoHS compliant, and the mechanical components of the luminaire have been verified to not knowingly contain any restricted substances listed per RoHS Directive 2011/65/EU. Finelite makes the specification process easy when putting healthier products on your projects. Simply add – **RLA** (Red List Approved) or – **RLD** (Declared Label) to your part number.

WEIGHT: Fixture weight = 2 lb/ft.

WARRANTY: 10-year performance-based warranty on all standard components. Qualified drivers by others and optional accessories such as emergency battery packs are covered by their individual manufacturer warranties.

TUNABLE WHITE PRE-QUALIFIED DRIVERS BY OTHERS

DMX	DALI	POE set up	LUTRON
EldoLED	EldoLED, Crestron	Contact Factory	LUTRON

NOTE: For a complete list of system option/limitations [please click here](#).