



Declare.

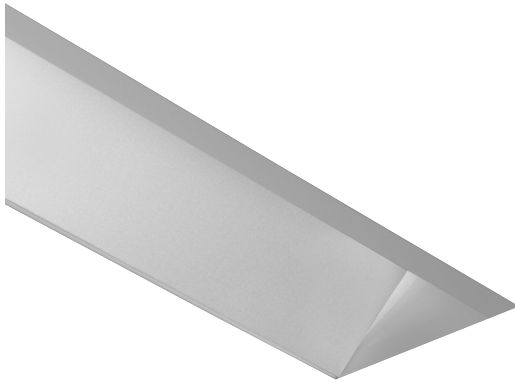


Date

Project

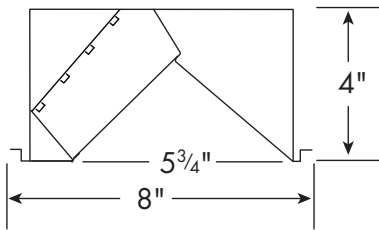
Type

Comments



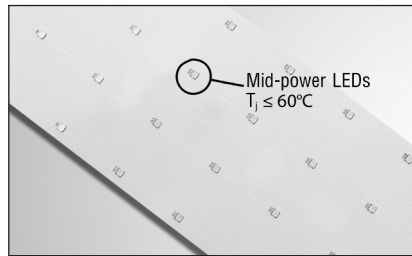
DESCRIPTION

HPW-LED is a high performance recessed asymmetric LED wall wash that delivers excellent visual comfort and uniform vertical illumination. This Product is enrolled in the International Living Future Institute (ILFI) Declare 2.0 Program and is third-party verified with options achieving Red List Approved and Declared status.



DIMENSIONS

HPW-LED is available in 2', 4', or 8' lengths. The width of the fixture is 8" and the height is 4".



THERMAL MANAGEMENT

Mid-power LEDs allow heat to be fully dissipated without the need for additional heat sinks.

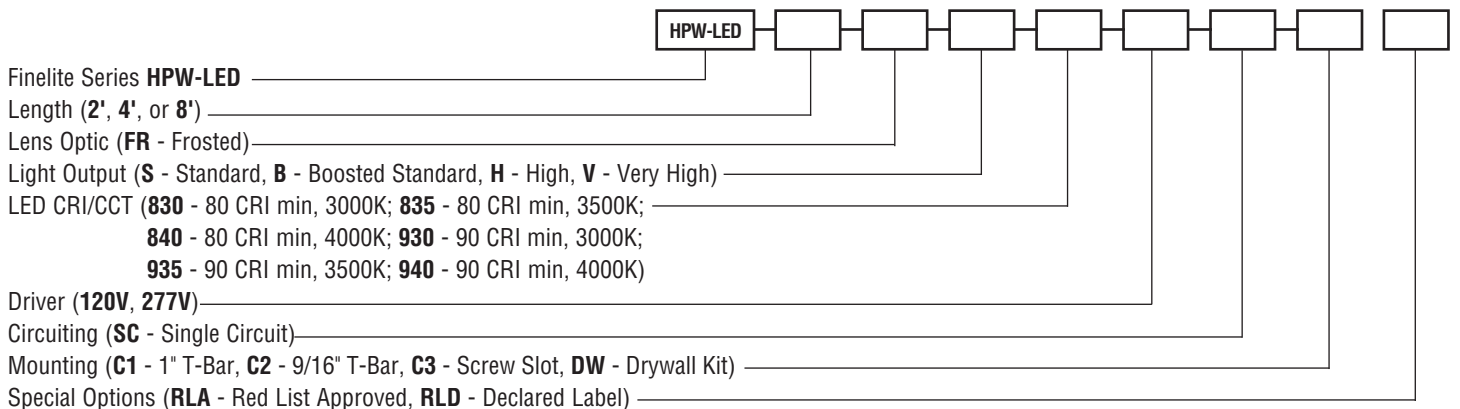


100% SERVICEABLE FROM BELOW

The light engine and driver can be easily changed from below ceiling – and they are simple to install.

ORDERING GUIDE

Sample Number: HPW-LED - 4' - FR - S - 835 - 277V - SC - C1 - RLA



A brand of **legrand**

PHOTOMETRY - 4' Luminaire

Very High Output

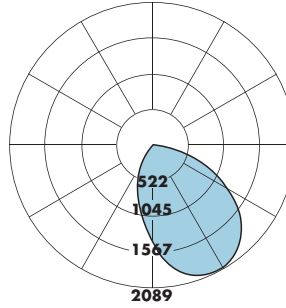
Efficacy (lumens per watt): 99

Total luminaire output: 3906 lumens (977 lumens/foot)
37 watts (9.3 watts/foot)

Peak Candela Value: 2083@ 25°

CCT: 3500K; CRI: 80

ITL LM79 Report ITL85170



CANDLEPOWER SUMMARY						
	0.0	67.5	45	22.5	90	Flux
0	1416	1416	1416	1416	1416	135
5	1620	1558	1410	1267	1208	135
15	1962	1801	1355	966	824	389
25	2083	1887	1247	675	489	587
35	2043	1819	1088	409	222	696
45	1847	1622	891	190	41	704
55	1504	1320	670	42	19	625
65	992	939	444	21	9	462
75	465	487	231	10	4	251
85	71	89	58	3	2	58
90	0	0	0	0	0	0

Total Light Output, 3500K, 80 CRI (Lumens) - 4' Luminaire			
S*	B*	H*	V**
1599	2010	3038	3906

Light Output, 3500K, 80 CRI (Lumens Per Foot)			
S*	B*	H*	V**
399	503	760	977

Power, 3500K, 80 CRI (Watts Per Foot)			
S*	B*	H*	V**
3.6	4.6	7.1	9.3

Efficacy, 3500K, 80 CRI (Lumens Per Watt)			
S*	B*	H*	V**
110	109	107	106

S - Standard Output, B - Boosted Standard Output, H - High Output, V - Very High Output

* Family Correlation based on 4' luminaire 3500K Very High Output (V) test - 120V.

** Based on ITL report: 85170

Lumen Adjustment Factors - 80 CRI	
3000K	0.985
3500K	1.000
4000K	1.032

Lumen Adjustment Factors - 90 CRI	
3000K	0.746
3500K	0.760
4000K	0.789

Apply a lumen adjustment factor to calculate lumens for the desired CCT and CRI.

SAMPLE LUMEN ADJUSTMENT CALCULATION

High Output (H), 4000K, 90 CRI

Lumen Adjustment Factor = 0.789

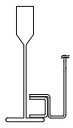
$$\text{Total Light Output} = 3038 \text{ lm} \times 0.789 = 2396 \text{ lm}$$

$$\text{Total Light Output per Foot} = 760 \text{ lm/ft} \times 0.789 = 600 \text{ lm/ft}$$

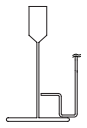
$$\text{watts/foot} = 7.1 \text{ W/ft}$$

$$\text{Efficacy} = \frac{600 \frac{\text{lm}}{\text{ft}}}{7.1 \frac{\text{W}}{\text{ft}}} = 85 \text{ lm/W}$$

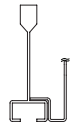
CEILING SYSTEM INFORMATION



9/16" T-Bar

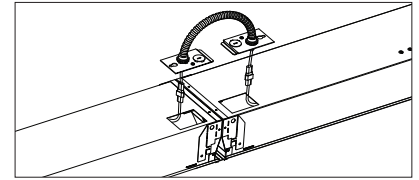
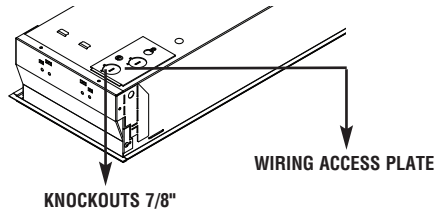


15/16" T-Bar



Screw Slot T-Bar

WIRING ACCESS DETAIL



QUICK CONNECT HARNESS:

Factory-supplied quick connect harness reduces installed costs.

SPECIFICATIONS

CONSTRUCTION: Fixture assembly constructed using die-formed, 20-gauge, cold-rolled steel housing and ends. Lens and drivers are easily removable from driver below ceiling without the need for tools. The compartment is also accessible from below ceiling by removing the reflector cover. Seismic brackets are integrated into the fixture assembly.

REFLECTORS: Reflector is die-formed 25-gauge Alanod 8516GP semi-specular aluminum with 94% high reflectance finish.

OPTICAL SYSTEM: Luminaires are standard with frosted lenses. All lenses are UV-stabilized and impact resistant virgin acrylic. Frosted lenses are 0.120" thick.

LIGHT OUTPUT: Four lumen packages available, Standard (**S**), Boosted Standard (**B**), High (**H**), and Very High (**V**). A separate chart summarizes lumen distribution and wattage. Light engines are replaceable.

LUMEN MAINTENANCE: 90% of initial light output (L90) at 100,000+ hours; 70% of initial light output (L70) at 200,000+ hours.

DRIVER: Replaceable 120V/277V Constant Current Reduction dimming driver standard. Can be wired dimming or non-dimming. 0-10V dimming controls

with a range of 10%- 100%. Dimming to 1% available; consult factory. Driver is fully accessible from below the ceiling. Power Factor: ≥ 0.90 . Total Harmonic Distortion (THD) $< 20\%$. Step-dimming driver (limited programable outputs. Contact Factory). Expected driver lifetime: 100,000 hours.

LUTRON DRIVER OPTIONS: LUT-ES1 - Hi-lume 1% EcoSystem with Soft-On, Fade to Black dimming (LDE1 series). Contact factory for availability of discontinued Lutron drivers.

ELECTRICAL: 120v or 277v prewired. Optional Chicago Plenum available. Contact factory. Low profile battery backup available. Battery backup delivers 1953 lumens. Half of a 4' section (across) will be illuminated in emergency mode.

MOUNTING: Standard flange design works with most lay-in ceiling types. Integral pry out tabs secure luminaire to ceiling grid. Support to structure locations on each corner. Consult local code for appropriate support to structure recommendations. Optional drywall kit available.

FINISH: Housing assembly painted with Signal White powder coat finish.

FEED: 18-gauge wire standard. Quick connect harnesses provided for row configurations.

LENGTHS: Luminaires are available in 2', 4', and 8' section lengths and can be joined together with factory supplied plug together wiring harnesses.

LABELS: Fixtures and electrical components are ETL listed conforming to UL1598 in the USA, and Canada and ETL listed certified to CAN/CSA C22.2 No. 250.0. In accordance with NEC code 410.130 (G) this luminaire contains an internal driver disconnect. IC-Rated. Damp location. Finelite products use electronic components that are RoHS compliant, and the mechanical components of the luminaire have been verified to not knowingly contain any restricted substances listed per RoHS Directive 2015/863. Finelite makes the specification process easy when putting healthier products on your projects. Simply add – **RLA** (Red List Approved) or – **RLD** (Red List Declared) to your part number.

WEIGHT: 2' - 14 lbs, 4' - 18 lbs, 8' - 30 lbs.

WARRANTY: 10-year performance-based warranty on all standard components. Optional accessories such as emergency battery packs are covered by their individual manufacturer warranties.