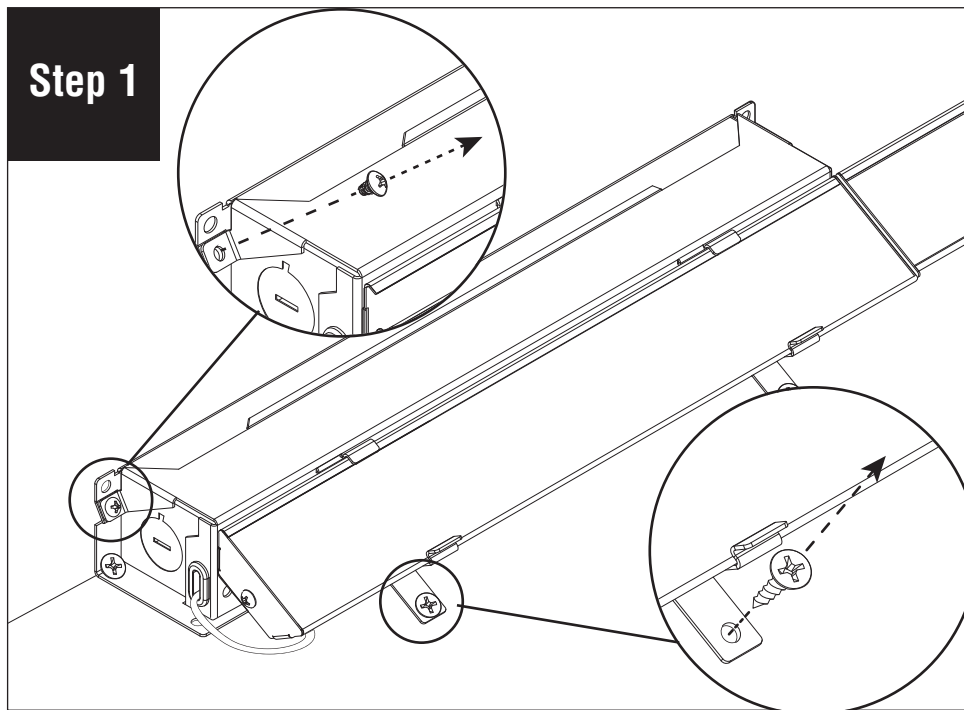
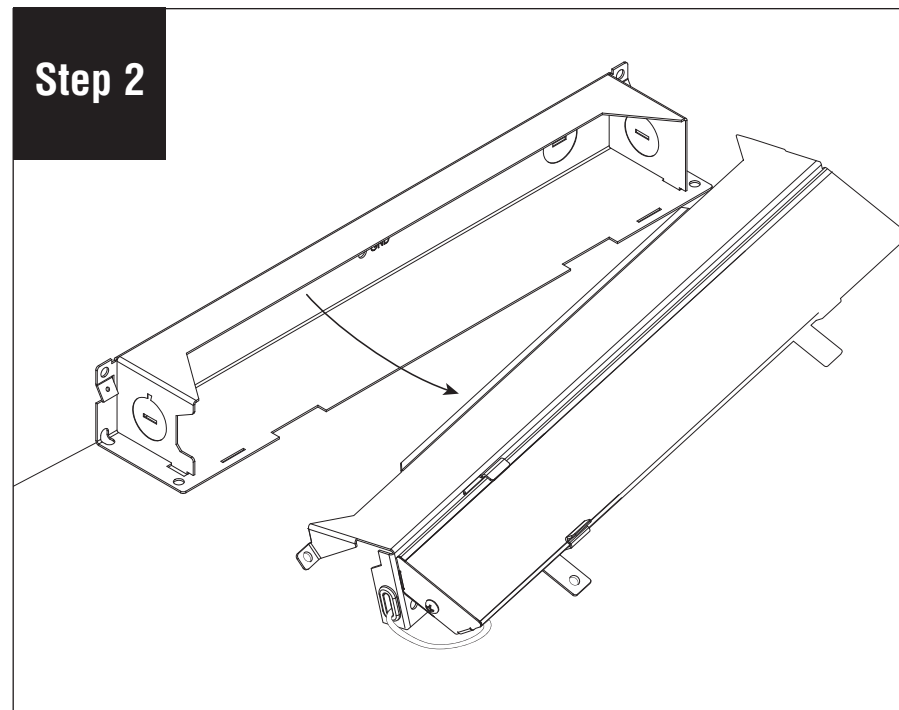


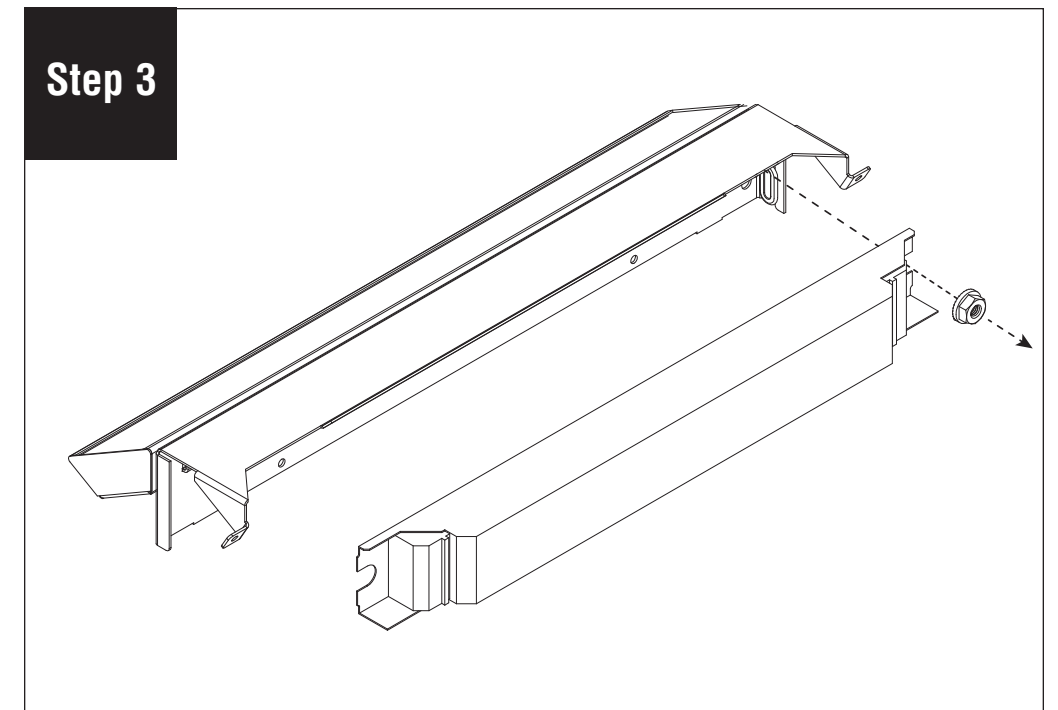
Series 11 Micro Flex LED Driver Replacement Instructions



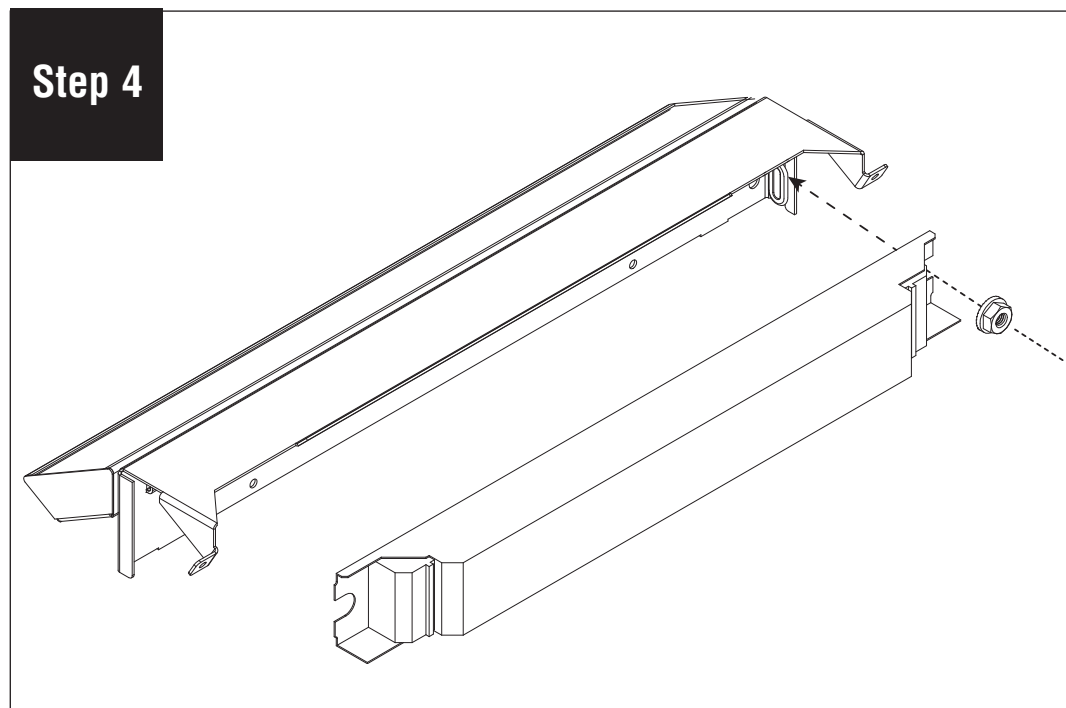
Step 1
Confirm which driver needs to be replaced. Shut off power to the fixture. Remove 2x Phillips screws on cover using #2 Phillips screw driver and 2x Phillips screws on optical channel clips.



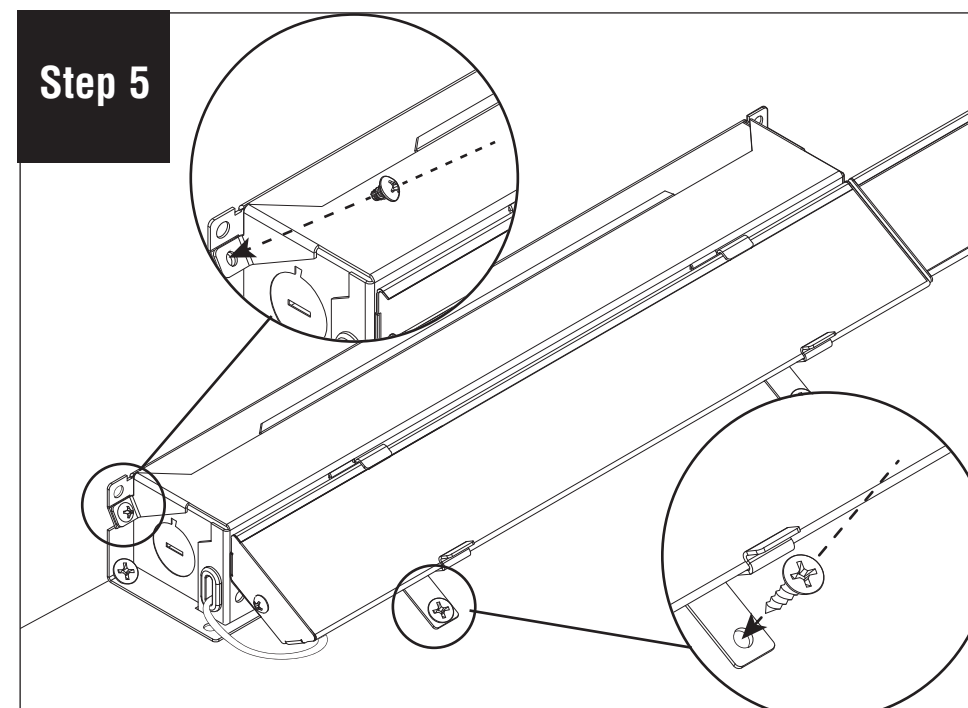
Step 2
Pull cover assembly away from body.



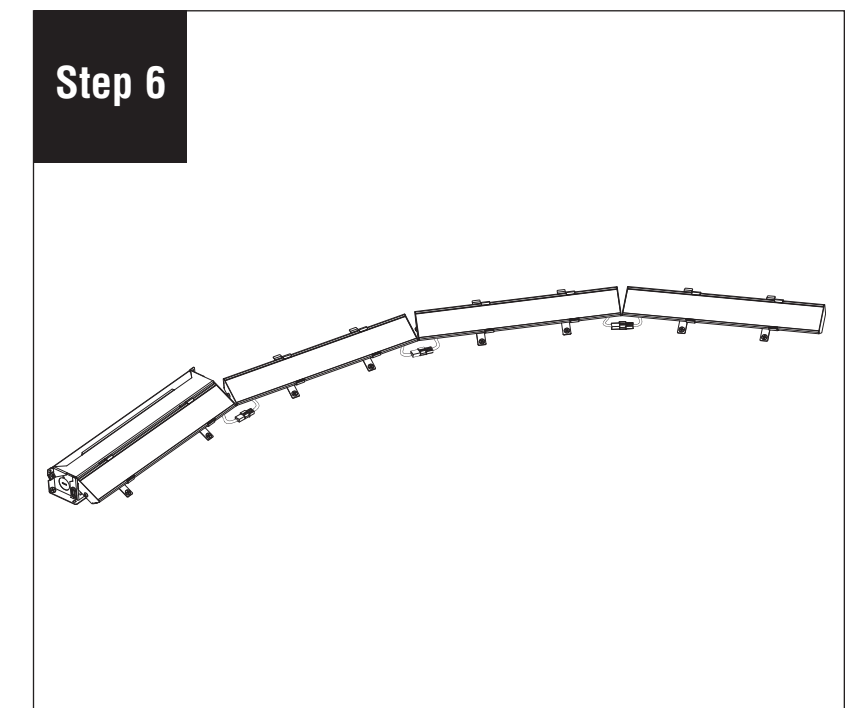
Step 3
Carefully remove wires connected to driver. Remove #10-32 keps nut with 3/8" nut driver, and remove driver from housing. Return spent driver to Finelite or local E-Waste recycler.



Step 4
Carefully replace wires connected to driver. Replace #10-32 keps nut with 3/8" nut driver to secure driver to housing.



Step 5
Reinstall cover assembly and secure 2x Phillips screws on cover using #2 Phillips screw driver and 2x Phillips screws on optical channel clips.



Step 6
Turn power on to fixture.