

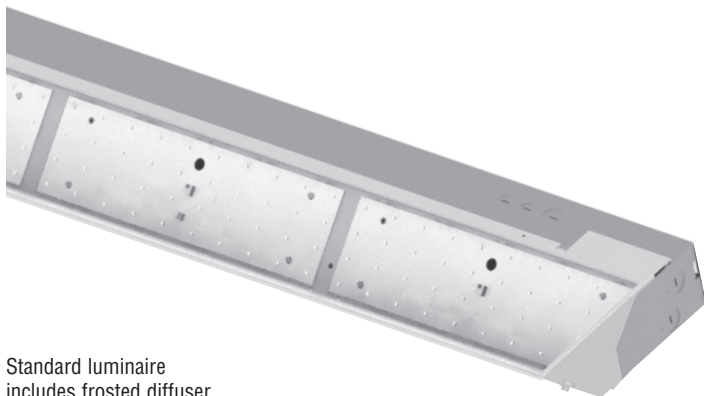


Date

Project

Type

Comments



Standard luminaire includes frosted diffuser

DESCRIPTION

Series 11 LED Standard is a high performance luminaire for cove ceilings where soft, even illumination is needed. Uses mid-power LEDs for even illumination and long life.

ORDERING GUIDE

Sample Number: S11-LED - 32' - B - 8TW - SC - 96W - 120V

Finelite **Series 11-LED Standard** _____

Length / Pre-qualified Controls by Others (**2'**, **3'**, **4'**, **8'**, multiples standard) _____

Light Output (**B** - Boosted Standard, **V** - Very High) _____

LED CRI/CCT (**8TW** - 80 CRI min, Tunable White; _____

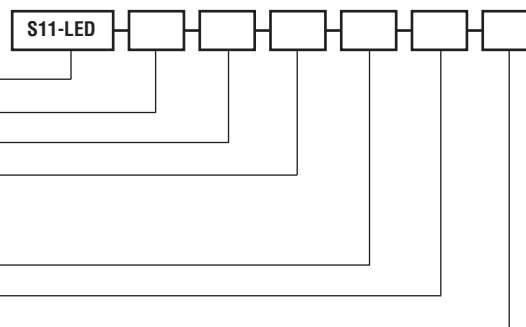
9TW - 90 CRI min, Tunable White.

See below for Tunable White controls options)

Circuiting (**SC** - Single Circuit)¹ _____

Reflector System (**96W**) _____

Voltage (**120V**, **277V**) _____



¹ Contact factory for switching options.

TUNABLE WHITE CONTROLS OPTIONS: SELECT ONE



FineTune controller with FineTune DMX Driver

OR

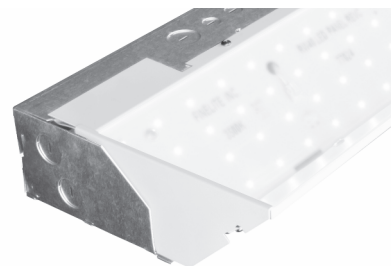
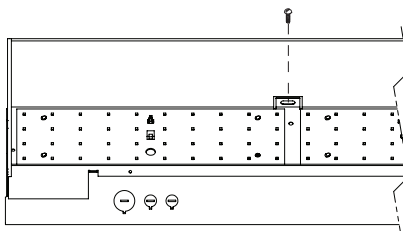
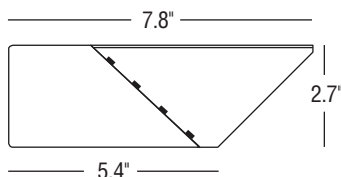
Controls by others with pre-qualified DMX driver

Controls by others with pre-qualified DALI driver

Controls by others with pre-qualified PoE setup

Controls by Lutron with pre-qualified Lutron driver

LUMINAIRE FEATURES



DIMENSIONS

Fits into architectural coves with a minimum depth of 7.8" and a minimum height of 2.7".

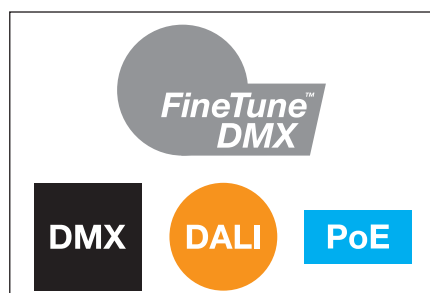
MOUNTING

Mounting without removing reflector makes installation fast and easy. Mounts directly to architectural cove with two screws per 4' section.

DIFFUSER

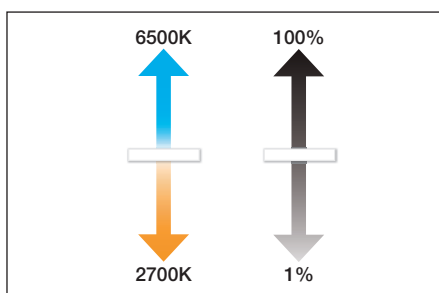
Series 11 LED is standard with a frosted acrylic diffuser providing a smooth distribution of light.

TUNABLE WHITE FEATURES



MULTIPLE CONTROL ARCHITECTURES

Finelite's FineTune™ DMX, qualified DMX, DALI (open and proprietary), or PoE (Power over Ethernet).



TUNABLE WHITE

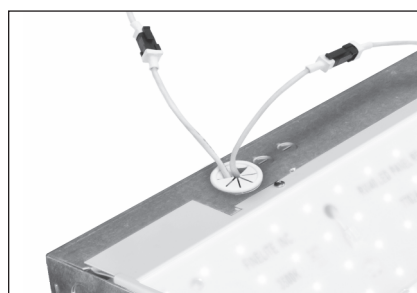
Any CCT between 2700K and 6500K with excellent CRI and R9 values; dimming from 100% to 1%.



FINETUNE SYSTEM

Award-winning control system, which includes intuitive wall mounted controller, power control center, driver, and mobile app to easily tailor lighting to match user preference.

DMX CONNECTION



PHOTOMETRY – 4' Luminaire

Very High Output

Efficacy: 113 lumens per watt

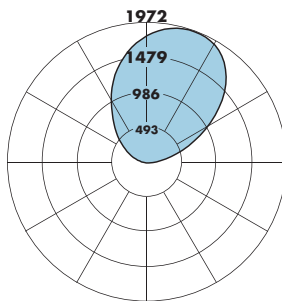
Total luminaire output: 4584 lumens (1146 lumens/foot)

40.7 watts (10.2 watts/foot)

Peak Candela Value: 1963 @ 165°

CCT: 3500K

Source Report: ITL 85173 (Family Correlation)



CANDELA DISTRIBUTION						
	0	45.0	90.0	135.0	180.0	Flux
90	0	0	0	0	0	
95	80	79	63	20	12	62
105	355	341	247	132	107	254
115	738	699	500	287	244	489
125	1174	1095	790	479	408	705
135	1573	1461	1101	717	612	841
145	1843	1724	1381	1010	855	851
155	1962	1865	1591	1295	1171	726
165	1963	1902	1727	1541	1460	484
175	1874	1851	1789	1728	1702	170
180	1798	1798	1798	1798	1798	

Total Light Output, 3500K, 80 CRI (Lumens) - 4' Luminaire	
B*	V**
2359	4584

Light Output, 3500K, 80 CRI (Lumens Per Foot)	
B*	V**
590	1146

Power, 3500K, 80 CRI (Watts Per Foot)	
B*	V**
5.1	10.2

Efficacy, 3500K, 80 CRI (Lumens Per Watt)	
B*	V**
117	113

Lumen Adjustment Factors - 80 CRI	
2700K	0.968
3000K	0.985
3500K	1.000
4000K	1.032
6500K	1.032

Lumen Adjustment Factors - 90 CRI	
2700K	0.731
3000K	0.746
3500K	0.760
4000K	0.789
6500K	0.789

Apply a lumen adjustment factor to calculate lumens for the desired CCT and CRI.

SAMPLE LUMEN ADJUSTMENT CALCULATION

Boosted Standard Output (B)
4000K, 90 CRI

$$\text{Lumen Adjustment Factor} = 0.789$$

$$\text{Total Light Output} = 2359 \text{ lm} \times 0.789 = 1861 \text{ lm}$$

$$\text{Total Light Output per Foot} = 590 \text{ lm/ft} \times 0.789 = 466 \text{ lm/ft}$$

$$\text{watts/foot} = 5.1 \text{ W/ft}$$

$$\text{Efficacy} = \frac{466 \frac{\text{lm}}{\text{ft}}}{5.1 \frac{\text{W}}{\text{ft}}} = 91 \text{ lm/W}$$

B - Boosted Standard Output, V - Very High Output

** Family Correlation based on 4' luminaire 3500K Very High Output (V) test - 120V.

* Correlation based on ITL report: 85173

SPECIFICATIONS

CONSTRUCTION: Body is formed from 20-gauge sheet steel. All components are hard-tooled to a tolerance of +/-0.010".

CORNER: Optional corner harness, 1/2" diameter flex conduit, 14" long. Contact factory.

REFLECTORS: Die-formed 24-gauge cold-rolled steel reflectors are finished in 96 LG high reflectance matte white powder coat paint.

DIFFUSER: Flush frost white snap-in diffuser standard, 73% transmissive, 99% diffusion. Frosted virgin acrylic, 0.08" thick.

LIGHT OUTPUT: Two lumen packages available, Boosted Standard (**B**) and Very High (**V**). A separate chart summarizes lumen distribution and wattage. Light engines are replaceable.

LUMEN MAINTENANCE: 90% of initial light output (L90) at 100,000+ hours; 70% of initial light output (L70) at 200,000+ hours.

TUNABLE WHITE DRIVER: Replaceable LED driver. Driver is accessible from below the ceiling. 120/277V. Power factor: ≥0.90. Total Harmonic Distortion (THD): <20%. Dimming Range: 100% - 1%. Expected driver lifetime: 100,000 hours.

ELECTRICAL:

Emergency Option DMX: Battery backup only.

Emergency Option DALI: Battery backup, emergency-to-generator/ inverter wiring.

Emergency Option LUTRON: Battery backup, emergency-to-generator/ inverter wiring.

Emergency Option PoE: Contact factory.

Battery Backup: Factory-choice low-profile backup battery available. 8' minimum fixture length for low profile battery battery pack. Backup batteries deliver 1800 lumens. A 4' section will be illuminated in emergency mode. Backup battery will operate 6500K in emergency.

MOUNTING: Luminaire mounts directly to architectural cove.

FEED: A standard 14-gauge wire feed extends from the back of the luminaire. DMX and the power feed at the same location (standard). DMX feeds cannot be cut or spliced. DMX feeds should be ordered based on fixed lengths.

DMX INTERCONNECTION CABLES: Luminaires are prewired with plug-and-play interconnection cables to support easy plug-together joining of fixture runs. If a non-FineTune DMX system has been specified, a DMX to RJ45 converter is provided.

LENGTHS / PRE-QUALIFIED CONTROLS BY OTHERS: 2', 3', 4', and 8' sections can be combined to make longer runs.

LABELS: Luminaire and electrical components are ETL listed conforming to UL 1598 in the U.S.A. and CAN/CSA C22.2 No. 250.0 in Canada. In accordance with NEC Code 410.73 (G), this luminaire contains an internal driver disconnect. Damp Location. Finelite products use electronic components that are RoHS compliant, and the mechanical components of the luminaire have been verified to not knowingly contain any restricted substances listed per RoHS Directive 2002/95/EC.

WEIGHT: 2.5 lb/ft.

WARRANTY: 10-year performance-based warranty on all standard components. Qualified drivers by others and optional accessories such as emergency battery packs are covered by their individual manufacturer warranties.

TUNABLE WHITE PRE-QUALIFIED DRIVERS BY OTHERS

DMX	DALI	POE set up	LUTRON
EldoLED	EldoLED, Crestron	Contact Factory	LUTRON

NOTE: For a complete list of system option/limitations [please click here](#).