

FINELITE

Series 7 Technical Sheet



Date

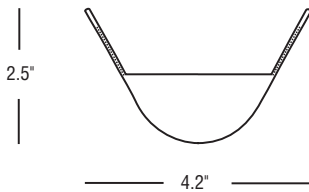
Project

Type

Comments

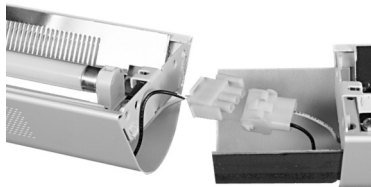
DESCRIPTION

Series 7 utilizes T5 and T5-HO technology to pack a tremendous lumen package into a micro shape. Distributing light approximately 97% up and 3% down, the Series 7 is available in one, two, or three T5 or T5-HO lamp cross sections. The beautiful shape of Series 7 brings an elegant new choice to lighting designs.



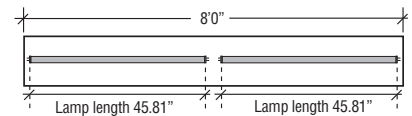
DIMENSIONS / LAMPING:

1, 2, or 3 T5 or T5-HO lamp cross sections.



STANDARD PLUG-TOGETHER WIRING:

Plug-together wiring is standard on all fixtures.

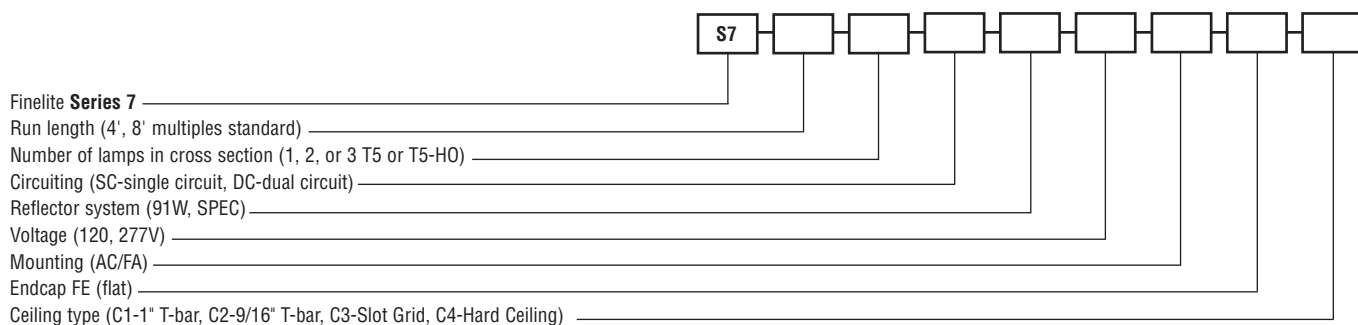


"ON-GRID" MOUNTING:

Fixture segments are 4'0", 8'0", and 12'0" long. T5-HO and T5 lamps are 1,163 mm. long (45.81), a little less than 4'. Mounting remains "on-grid". Finelite reflector system ensures no shadow at the lamp holder.

ORDERING GUIDE

Sample Number: S7 - 32' - 1 T5HO - SC - 91W - 277 - AC 18" - FE - C1



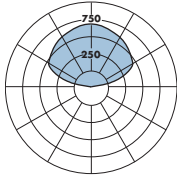
FINELITE

Series 7 Technical Sheet

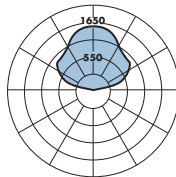
PHOTOMETRY



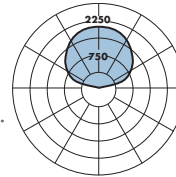
S7: 1 T5 - Specular
 Distribution: 98% Up / 2% Down
 Efficiency: 87.0%
 Peak Candela Value: 719@ 180°
 LSI Report 48495



S7: 2 T5 - Specular
 Distribution: 97% Up / 3% Down
 Efficiency: 82.6%
 Peak Candela Value: 1578@ 180°
 LSI Report 48496



S7: 3 T5 - Specular
 Distribution: 97% Up / 3% Down
 Efficiency: 76.9%
 Peak Candela Value: 2109@ 180°
 LSI Report 48497



CANDLEPOWER SUMMARY						
	0.0	22.5	45.0	67.5	90.0	Flux
0	11	11	11	11	11	11
5	11	11	13	13	12	1
15	11	13	14	13	12	4
25	10	12	13	13	12	6
35	8	11	11	12	12	7
45	7	9	10	11	11	7
55	4	7	9	11	11	8
65	3	6	8	10	10	8
75	2	4	8	9	10	7
85	1	3	7	8	9	6
90	0	2	6	7	8	
95	16	76	80	72	67	75
105	113	192	264	304	311	259
115	233	292	386	473	476	372
125	356	383	462	519	542	407
135	469	490	528	573	596	410
145	568	588	588	612	633	374
155	643	658	664	660	663	304
165	694	702	706	711	713	199
175	721	722	718	714	717	68
180	719	719	719	719	719	

CANDLEPOWER SUMMARY						
	0.0	22.5	45.0	67.5	90.0	Flux
0	26	26	26	26	26	26
5	26	27	30	31	30	3
15	24	31	33	33	30	9
25	22	29	30	31	29	13
35	18	26	28	30	29	17
45	13	21	26	29	29	19
55	9	17	23	28	29	19
65	6	13	21	27	28	19
75	3	11	19	24	26	18
85	1	8	16	21	23	16
90	0	7	16	20	22	
95	51	126	121	116	102	125
105	272	371	454	496	492	445
115	538	532	706	760	786	659
125	808	720	838	978	1010	769
135	1046	961	938	1022	1070	769
145	1257	1191	1088	1093	1118	715
155	1419	1389	1306	1253	1237	608
165	1526	1523	1483	1449	1439	419
175	1580	1582	1571	1560	1559	149
180	1578	1578	1578	1578	1578	

CANDLEPOWER SUMMARY						
	0.0	22.5	45.0	67.5	90.0	Flux
0	39	39	39	39	39	39
5	40	41	46	46	44	4
15	38	46	50	49	46	13
25	34	43	46	47	44	20
35	29	38	42	46	46	26
45	22	32	39	44	46	29
55	16	27	37	43	44	31
65	10	21	33	42	43	30
75	7	18	30	39	41	29
85	3	13	26	34	38	26
90	0	8	22	30	34	
95	69	127	123	118	113	134
105	384	499	512	520	511	523
115	750	846	930	957	960	884
125	1098	1100	1262	1322	1341	1096
135	1416	1398	1460	1586	1622	1150
145	1684	1686	1647	1689	1736	1055
155	1894	1914	1867	1847	1851	866
165	2039	2060	2042	2023	2019	575
175	2108	2118	2109	2100	2102	201
180	2109	2109	2109	2109	2109	

— Refer to www.finelite.com for additional photometry and product information.

SPECIFICATIONS

CONSTRUCTION: Body is 20-gauge die-formed steel with 14-gauge die-formed internal joiner system, plug-together wiring standard. All components are hard-tooled to tolerances of 0.010".

Precision-punched 0.062" diameter perforations cover the sides of the fixture. Optional: Series 7 100% Indirect (S7-I). Consult factory.

ENDCAPS: Flat 18-gauge die-formed steel endcaps standard.

REFLECTORS: Die-formed, 91% reflective white standard. Virgin acrylic UV-stabilized lens diffuser over perforations is standard. Optional: Fully Specular Reflector System. Contact factory.

SUPPORT CABLES: Plated steel cable and hardware.

MOUNTING OPTIONS: Semi-adjustable aircraft cable, (AC) ± 0.5" in lengths of 12", 15", 18", 21", 24", 27", 30", and 36". Order length, e.g., AC 18". Optional Adders: fully adjustable aircraft cable (FA) in lengths up to 150".

FINISHES: Finelite Signal White standard. Fixtures are prepared for finishing with a five-stage system including heated wash, ambient rinse, heated iron phosphate wash, cold rinse, and heated seal. The finish is an electrostatically, dry-applied epoxy powder coat that is thermo-fused at over 100°C. No volatile organic compounds (VOC's) are emitted during finishing. Optional Adders: 185 colors available from Tiger Drylac's RAL color chart.

LAMPING: Available in 1, 2, or 3 T5 or T5HO lamp cross sections.

FEED: 18-gauge straight cord. 14-gauge feed cord used when fixture current exceeds 6 amps. Optional Adders: Coil Cord Feed, Rigid Stem Feed. Consult factory.

ELECTRICAL: 120 or 277V prewired. Fixture and electrical components are UL and C-UL listed and fixture will bear UL and C-UL labels. Optional Adders: dual circuit, emergency circuits, emergency battery packs. Contact factory.

BALLAST: Electronic rapid-start ballasts <10% THD standard. Optional adders: 347V, emergency battery packs, dimming ballasts (controls by others). Specify T5 or T5HO.

LENGTHS: 4' and 8' section lengths can be combined to make longer runs. Contact factory for additional lengths.

WEIGHT: Fixture weight = 2.0 lb/ft.