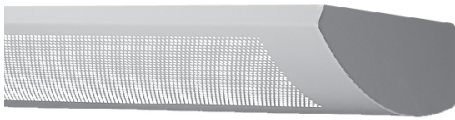
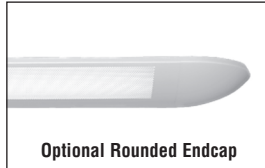


FINELITE

Series 5 Wall Mount - Technical Sheet



Signal White is standard finish



Optional Rounded Endcap

DESCRIPTION

Series 5 Wall Mount provides 94% uplight and 6% downlight in a beautifully curved, low profile fixture. The 0.062" precision punched perforations follow the curve of the fixture and make an attractive display wherever it is installed.

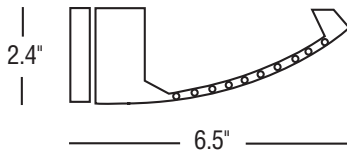
Date

Project

Type

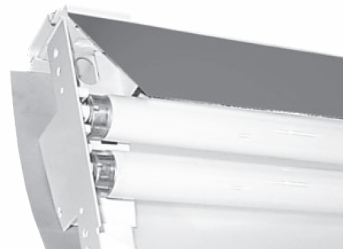
Comments

Perf or Indirect - T8 / T5HO



DIMENSIONS / LAMPING:

Available in 1 or 2 T8, T5 or T5HO lamp cross sections.



ALIGNER BRACKET:

14-gauge die-formed steel aligner plate slides easily into fixture for seamless light leak protection.

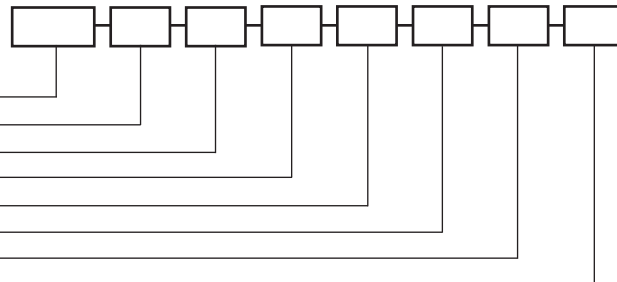


PRECISION JOINTS:

Joints are seamless and tight without light loss leaks.

ORDERING GUIDE

Sample Number: S5-WM-P - 32' - 2T8 - SC - SPEC - 277V - FE - 0.88



Finelite **Series 5-WM-P** (Perforated), **Series 5-WM-I** (Indirect) _____

Run length (4', 8' multiples standard, 2', 3' wall sconce) _____

Number of lamps in cross section (1, 2, T8, T5, or T5HO) _____

Circuiting (**SC** - Single Circuit, **DC** - Dual Circuit) _____

Reflector System (**SPEC** - Specular) _____

Voltage (**120V**, **277V**, **347V**) _____

Endcap (**FE** - Flat Endcap), **RE** - Rounded Endcap) _____

Ballast Factor (Standard **0.88** for T8 lamps, **1.0** for T5 or T5HO) _____

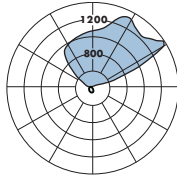
FINELITE

Series 5 Wall Mount - Technical Sheet

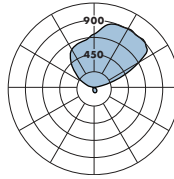
PHOTOMETRY



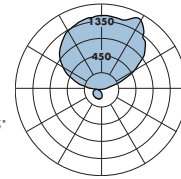
S5 Wall Mount: 1 T5HO
 Distribution: 95% Up / 5% Down
 Efficiency: 91.0%
 Peak Candela Value: 1520@ 125°
 LSI Report 48452



S5 Wall Mount: 1 T8
 Distribution: 94% Up / 6% Down
 Efficiency: 86.9%
 Peak Candela Value: 883@ 135°
 LSI Report 47963



S5 Wall Mount: 2 T8
 Distribution: 91% Up / 9% Down
 Efficiency: 81.1%
 Peak Candela Value: 1471@ 145°
 LSI Report 47962



CANDLEPOWER SUMMARY						
	0	45.0	90.0	135.0	180.0	Flux
0	85	85	85	85	85	
5	92	91	84	79	75	8
15	103	99	80	69	63	23
25	105	96	72	54	46	35
35	100	88	61	38	29	40
45	89	75	46	22	15	38
55	75	58	30	12	7	32
65	57	40	19	6	0	23
75	37	23	11	0	0	14
85	21	13	4	0	0	8
90	14	8	0	0	0	
95	9	6	38	42	44	42
105	281	545	227	90	95	289
115	1143	1150	415	204	138	596
125	1520	1055	583	483	305	706
135	1327	1184	733	728	606	707
145	1396	1335	856	835	850	646
155	1455	1239	952	913	923	494
165	1185	1099	1016	978	971	296
175	1062	1061	1045	1027	1017	99
180	1044	1044	1044	1044	1044	

CANDLEPOWER SUMMARY						
	0	45.0	90.0	135.0	180.0	Flux
0	57	57	57	57	57	
5	60	61	57	55	52	5
15	69	65	55	50	46	16
25	70	65	50	40	35	24
35	67	60	42	30	24	28
45	60	51	32	19	14	27
55	50	40	22	11	8	23
65	37	27	14	6	4	17
75	24	16	8	3	2	11
85	14	10	4	3	2	7
90	10	6	0	0	0	
95	7	3	29	26	30	27
105	153	250	144	63	59	160
115	522	596	269	176	130	335
125	843	700	383	306	254	438
135	883	755	483	444	388	450
145	882	797	567	528	523	410
155	869	830	629	578	584	320
165	849	811	671	614	612	200
175	732	727	691	658	647	66
180	690	690	690	690	690	

CANDLEPOWER SUMMARY						
	0	45.0	90.0	135.0	180.0	Flux
0	158	158	158	158	158	
5	166	166	158	151	144	15
15	187	180	151	131	121	44
25	190	177	136	103	88	64
35	183	163	115	72	55	74
45	166	139	87	42	29	71
55	141	111	57	22	12	60
65	111	79	35	9	3	45
75	75	48	19	3	0	29
85	44	27	6	2	0	16
90	38	22	3	2	0	
95	123	97	47	55	48	86
105	374	381	267	260	253	332
115	725	724	515	514	497	591
125	1065	986	728	732	739	755
135	1263	1241	919	912	935	795
145	1471	1297	1083	1061	1075	739
155	1396	1288	1212	1165	1181	574
165	1360	1347	1294	1259	1247	368
175	1352	1352	1335	1313	1306	127
180	1333	1333	1333	1333	1333	

— Refer to www.finelite.com for additional photometry and product information.

SPECIFICATIONS

CONSTRUCTION: Body is 20-gauge die-formed steel with 18-gauge die-formed internal joiner system, plug-together wiring standard. All components are hard-tooled to tolerances of 0.010".

Precision-punched 0.062 diameter perforations cover the bottom side of the fixture in one column.

ENDCAPS: Flat Endcap (FE) standard, 18-gauge die-formed steel endcaps, add 0.1" at each end.

Optional: Rounded Endcap (RE), injection molded sculpted endcap with 0.100" reveal. No exposed fasteners, holes, or knockouts. Rounded Endcap adds 5.675" at each end.

REFLECTORS: Die-formed, specular reflector system (SPEC). Virgin acrylic UV-stabilized lens diffuser over perforations is standard. Optional Dust Cover for T8 lamps only. Contact factory.

MOUNTING OPTIONS: Fixture hangs securely from mounting bracket fastened directly to the wall. Mounting bracket in 2', 3', 4', and 8' lengths. Fixture hangs 0.5" from the wall.

FINISHES: Signal White standard. Optional Adders: 185 colors available from Tiger Drylac's RAL color chart.

LAMPING: Available in 1 or 2 T8, T5, or T5HO lamp cross sections. Contact factory.

FEED: 18-gauge straight cord. 14-gauge feed cord used when fixture current exceeds 6 amps.

ELECTRICAL: 120 or 277V prewired. Plug-together wiring standard. Fixture and electrical components are UL/C-UL listed and fixture will bear UL/C-UL labels. Optional Adders: 347V prewired, dual circuit, emergency circuits, emergency battery packs. Contact factory.

BALLAST: Electronic instant-start ballast <10% THD, 0.88 BF standard for T8 lamps. Electronic rapid-start ballasts <10% THD, 1.0 BF standard for T5/T5HO lamps. Optional adders: rapid-start ballasts (standard for T5/T5HO), 347 volt, emergency battery packs, dimming ballasts (controls by others). Requires low-profile ballasts and battery packs.

LENGTHS: 4' and 8' section lengths can be combined to make longer runs. Optional: Independent 2' or 3' wall sconce. Contact factory.

WEIGHT: Fixture weight = 2 lb/ft.

LABELS: Fixture and electrical components are ETL listed conforming to UL 1598 in the U.S.A., and Canada; ETL listed to certified CAN/CSA C22.2 No. 250.0. Fixtures will bear ETL labels.