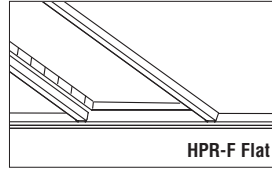
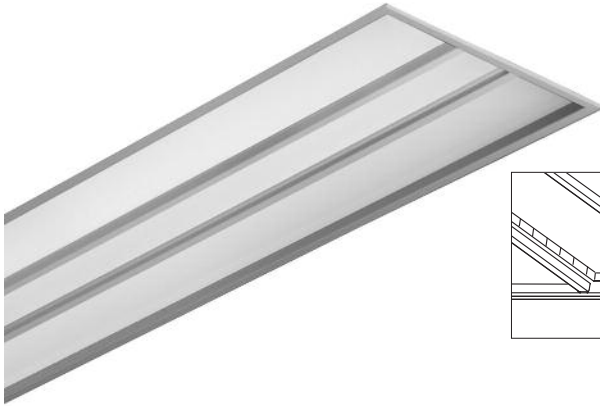


# FINELITE

## High Performance Recessed (HPR) 1x4 Air Return



HPR-F Flat

### DESCRIPTION

HPR is a highly effective recessed luminaire delivering excellent visual comfort and outstanding performance for offices, schools, healthcare, and retail applications. Advanced optical designs make HPR a powerful solution for low-ceiling applications and eliminate the shadows common to other recessed products. HPR Air Return effectively removes air from the space with little changes to the luminaire aesthetic.

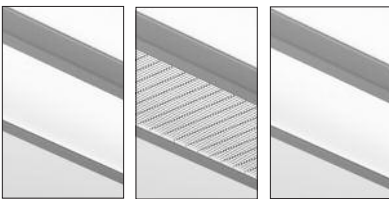
Date

Project

Type

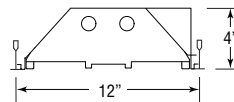
Comments

### Diffuse (DCO) Slotted (SCO) Round (RCO)



### CENTER SHIELDING OPTIONS:

HPR is available with three different center-shielding options: a diffuse center optic, a slotted center optic, and a round center optic.

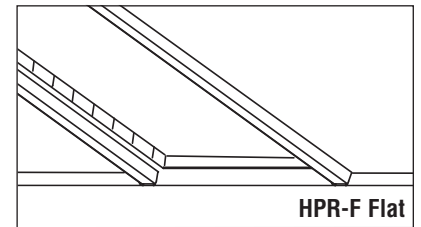


T8 (1 or 2)

T5 / T5HO (1 or 2)

### DIMENSIONS / LIGHT ENGINE:

Available in 1, 2, T8, T5, or T5HO lamps.



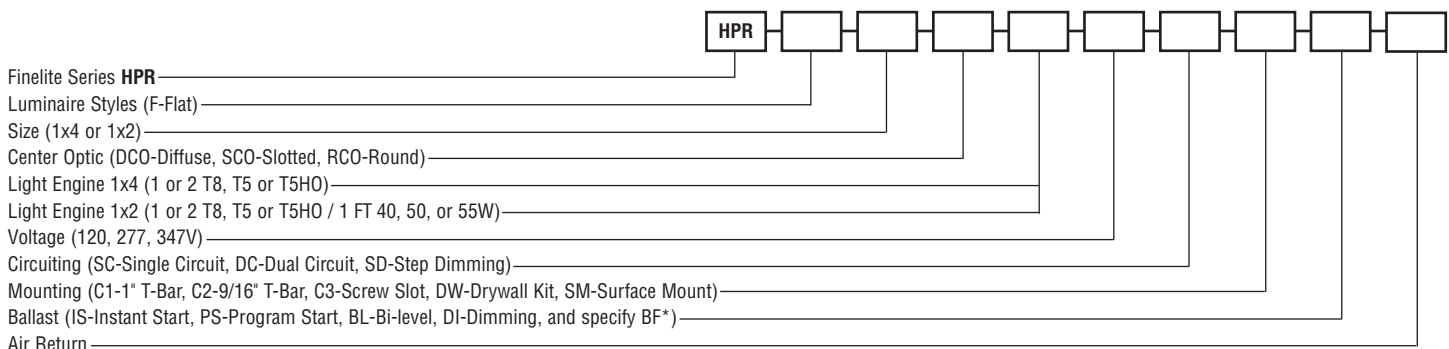
HPR-F Flat

### LUMINAIRE STYLES:

HPR-F features lenses parallel to the ceiling plane.

### ORDERING GUIDE

Sample Number: HPR - F - 1x2 - DCO - 1T8 - 277 - SC - C1 - IS.88 - AR

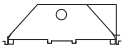


\* Standard 0.88 for T8 lamps, 1.0 for T5 or T5HO. Contact factory for available ballast factors. Contact factory for Master/Satellite and factory-supplied whip options.

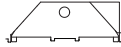
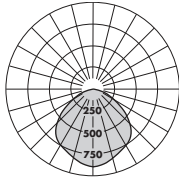
# FINELITE

## High Performance Recessed (HPR) 1x4 Air Return

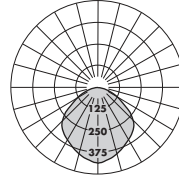
### PHOTOMETRY



HPR-F: 1 T8-DCO (1x4)  
Efficiency: 78.0%  
LSI Report: 25829



HPR-F: 1 T8-DCO (1x2)  
Efficiency: 77.2%  
LSI Report: 25834



CANDLEPOWER SUMMARY						
	0.0	22.5	45	67.5	90	Flux
0	882	882	882	882	882	
5	883	879	878	876	872	84
10	871	866	861	855	850	
15	852	844	833	825	819	235
20	825	814	798	790	786	
25	788	775	761	760	761	353
30	744	729	719	732	738	
35	690	675	676	699	708	429
40	628	616	628	655	662	
45	559	551	570	591	593	439
50	484	479	498	509	506	
55	406	404	417	417	410	367
60	328	328	334	325	316	
65	253	253	235	240	231	245
70	184	184	179	166	159	
75	122	122	116	105	99	121
80	69	69	62	54	50	
85	26	25	18	16	16	26
90	0	0	0	0	0	

CANDLEPOWER SUMMARY						
	0.0	22.5	45	67.5	90	Flux
0	417	417	417	417	417	
5	418	417	413	410	410	40
10	412	409	404	400	398	
15	402	398	389	384	383	110
20	388	381	371	366	365	
25	370	361	351	350	352	164
30	347	337	330	335	340	
35	320	310	308	319	326	197
40	289	280	285	298	304	
45	255	248	256	268	272	199
50	219	214	223	230	232	
55	181	179	186	188	187	164
60	145	144	148	145	143	
65	111	110	111	106	104	108
70	80	79	78	73	71	
75	52	52	49	45	43	52
80	28	28	25	21	20	
85	10	9	6	6	6	10
90	0	0	0	0	0	

— Refer to [www.finelite.com](http://www.finelite.com) for additional photometry and product information.

### SPECIFICATIONS

**CONSTRUCTION:** Fixture assembly constructed using die-formed 20-gauge cold-rolled steel housing and ends. All components are hard-tooled to tolerances of 0.010". Ballast compartment is accessed from below. Optical system retained using hinged door frame assembly to provide easy access to ballast compartment and for re-lamping from below without the need of tools. Seismic brackets are integrated into the fixture assembly. Additional wire entrances are positioned on the ends of the housing to allow easy wiring access for the installer.

**REFLECTORS:** Die-formed 20-gauge cold-rolled steel reflectors are finished in 96 LG high reflectance matte white powder coat paint.

**OPTICAL SYSTEM:** Optical system components include side lens panels and a center optic element held in place with a frame constructed from die-formed cold-rolled steel. The side lenses are UV-stabilized and impact-resistant frosted virgin acrylic, 0.080" thick. Available parallel to the ceiling plane.

*Available options for the center optic elements:*

*Diffuse Center Optic: UV-stabilized and impact-resistant frosted virgin acrylic. Optional Soft Glow Optic (SGO) available for T8 only.*

*Slotted Center Optic: Die-formed cold-rolled steel panel with 1/16" x 1/2" rectangular hole pattern. Virgin acrylic overlay.*

*Round Center Optic: Die-formed cold-rolled steel panel with precision-punched 1/16" round hole pattern arranged in staggered formation. Virgin acrylic overlay.*

**LIGHT ENGINE:** Available in 1 or 2 T8, T5, or T5HO lamp cross sections.

**BALLAST:** UL listed Class P. low profile electronic instant-start ballast <10% THD, 0.88 BF standard for T8 lamps. Electronic program-start ballasts <10% THD, 1.0 BF standard for T5/T5HO lamps. Electronic ballasts <10% THD, standard BF for FT lamps. Contact factory for available BF's. Optional adders: program-start ballasts (standard for T5/T5HO), 347V, emergency battery packs, dimming or bi-level ballasts (controls by others).

**ELECTRICAL:** Fixtures and electrical components are ETL listed conforming to UL1598 in the USA, and Canada and ETL listed certified to CAN/CSA C22.2 No. 250.0. In accordance with NEC code 410.73 (G) this luminaire contains an internal ballast disconnect. Optional Chicago Plenum available. Contact factory. Low profile battery backup available. Battery pack delivers 1500 lumens.

**MOUNTING:** Standard flange design works with most lay-in ceiling types. Integral pryout tabs secure luminaire to ceiling grid from above. Fixture offers tie-in locations for tie-wire on all corners. Consult local code for appropriate tie-wire recommendations. Drywall Kit available. Surface mount version available; refer to separate tech sheet.

**AIR RETURN:** Luminaire tested in accordance with ADC1062 and ASHRAE 70. Air Return slots positioned on the center optic. Diffuse Center Optic (DCO) is placed above the air return slots. Other center optics are positioned below their return slots.

**FEED:** 18-gauge wire standard.

**FINISH:** Housing and door assembly painted with 96 LG high reflectance matte white powder coat paint. Available in matte white only.

**WIRING:** Master / Satellite wiring available. Contact factory for configuration options. Optional whips (with flex connectors) supplied in a max. of 11' lengths.

**WEIGHT:** Maximum weight: 1x4 - 25 lbs.

**LABELS:** Fixture and electrical components are ETL listed conforming to UL 1598 in the U.S.A., and Canada; ETL listed to certified CAN/CSA C22.2 No. 250.0. Fixtures will bear ETL labels.