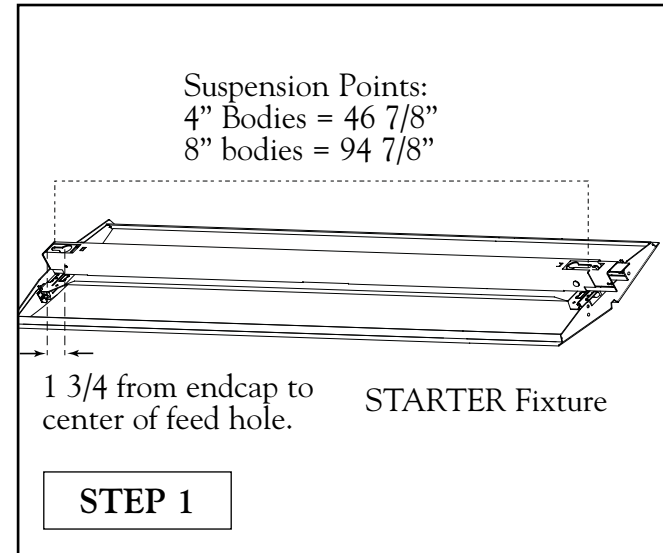


# FINELITE

## Series 15 Surface Mount Instructions (On-Grid™)

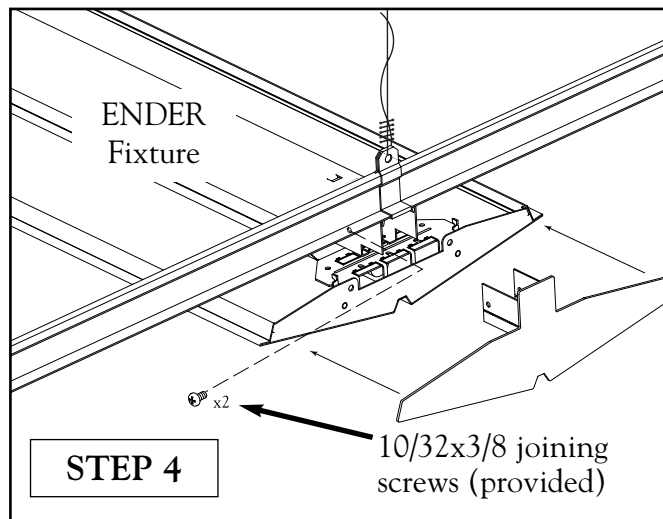
DO NOT attempt to join fixtures together on the floor. Damage may result when lifted. Follow these instructions.

### INSTALL MOUNTING HARDWARE



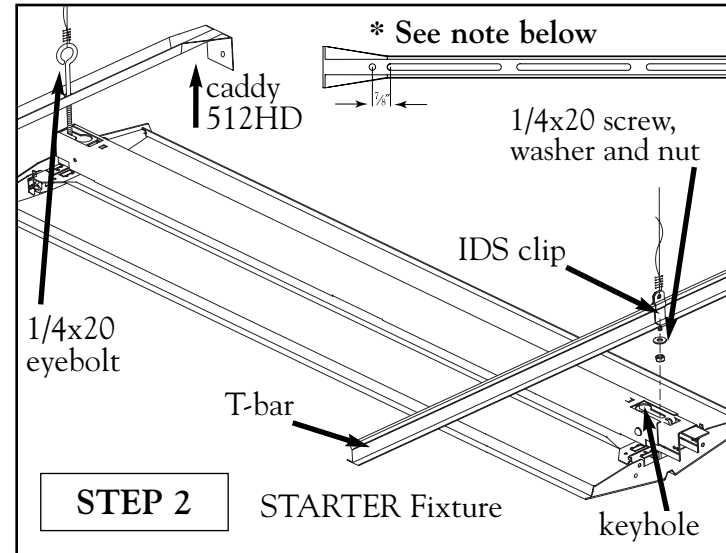
The first suspension point in each run uses the caddy 512HD bar with 1/4x20 eyebolt. All other positions are mounted on grid using IDS clips (provided). All feed connections require a hole drilled above the feed location spaced as noted above. Connect flex to fixture at feed location and make splices within fixture body.

### ATTACH ENDER



Remove endcap of ENDER in order to gain access to nut and washer. Endcap is held on by two 10/32x3/8 screws. Tighten nut securing fixture to ceiling and replace endcap.

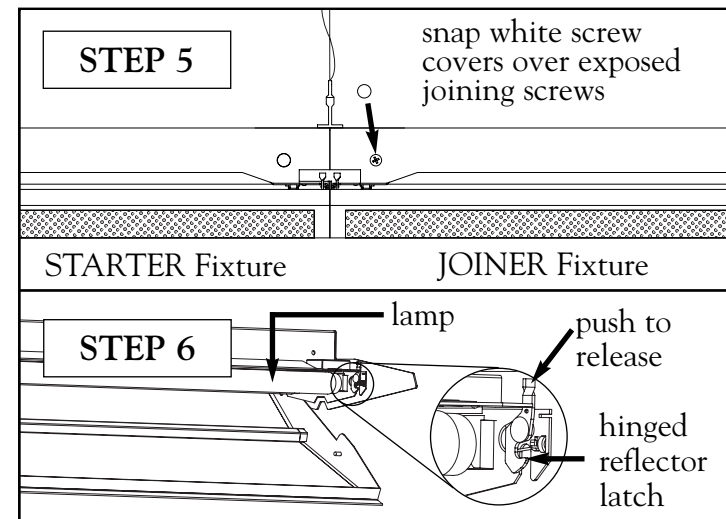
### INSTALL STARTER FIXTURE



Remove endcap to gain access to body channel. Secure fixture to ceiling with washer and nut as shown above. Fixture should be tight to ceiling.

\* NOTE - Drill 1/4" hole for 1/4x20 eyebolt in caddy 512HD bar (see illustration above for placement) to accommodate grid orientation when fixture run crosses 2' dimensions of 2'x4' tile.

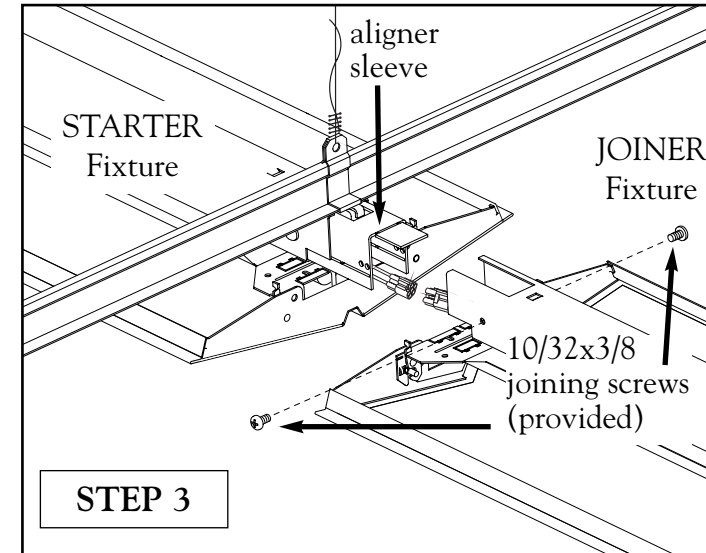
### COVER EXPOSED SCREWS & INSTALL LAMPS



STEP 5: Cover joiner screws with white caps provided (2 per joint).

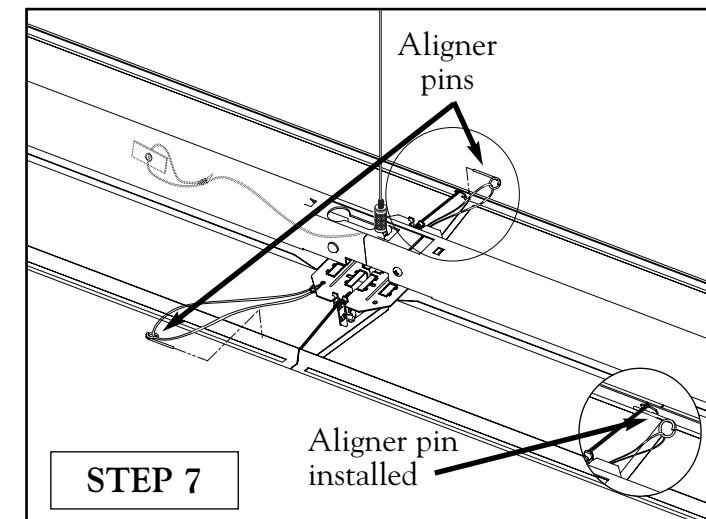
STEP 6: Install lamps by depressing latch that rotates hinged reflector assembly to expose lamp holders. NOTE - Omit if lamps by Finelite.

### JOIN FIXTURES



Pre-install washer and nut on IDS clip. Lift STARTER up so washer passes through keyhole into the aligner sleeve (see STEP 2). Connect plug-together wiring. Connect JOINER and STARTER fixtures. Secure fixtures with screws as shown. Tighten nut and washer at far end of JOINER. Fixture should be tight to ceiling. Repeat process to end of row.

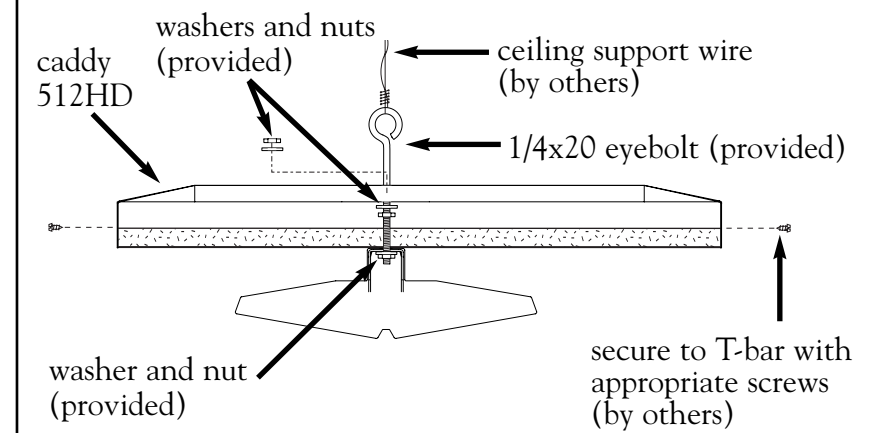
### INSTALL ALIGNER PINS



Insert aligner pins into holes on edge of basket.

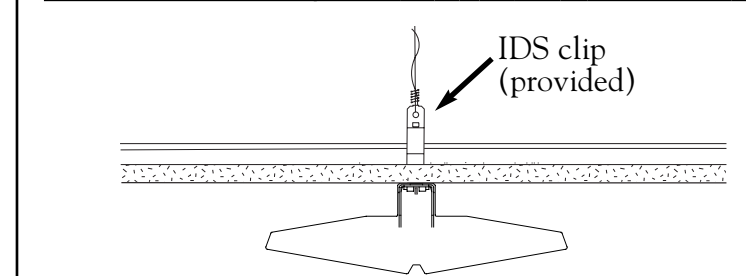
### MOUNTING HARDWARE

#### NON-FEED LOCATION – FIRST SUSPENSION POINT



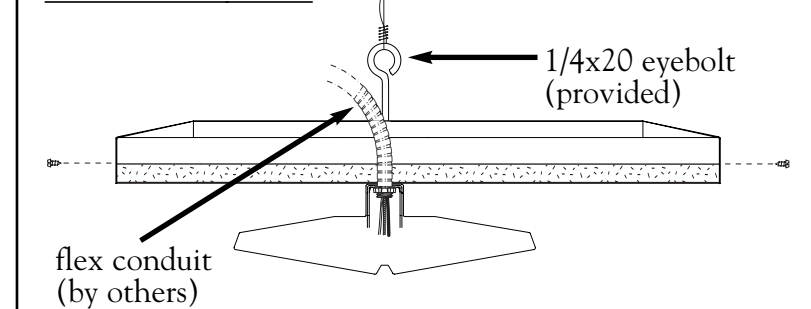
- Position and secure caddy 512HD to T-bar with appropriate screws.
- Fixture is secured to 1/4x20 eyebolt with washers and nuts (provided).

#### NON-FEED LOCATION – ON-GRID SUSPENSION POINT



- IDS clip secured to T-bar and secured to structure.
- Washer and nut are secured to aligner sleeve.

#### FEED LOCATION



- Drill hole in ceiling tile large enough to secure flex to fixture body. Center of feed hole is 1 1/4" from endcap (see Step 1).
- Secure flex to body and make splices inside fixture channel.

NOTE: All power connections to be installed to local/national codes by a Certified Electrician.