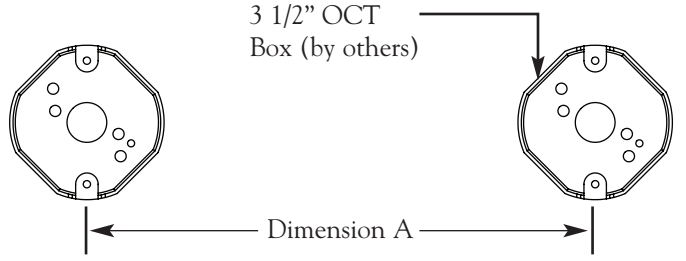


## Oval Instructions - Stem Wall Mount (Starter/Independent)

1. Boxes must be orientated as shown for mounting brackets to function properly

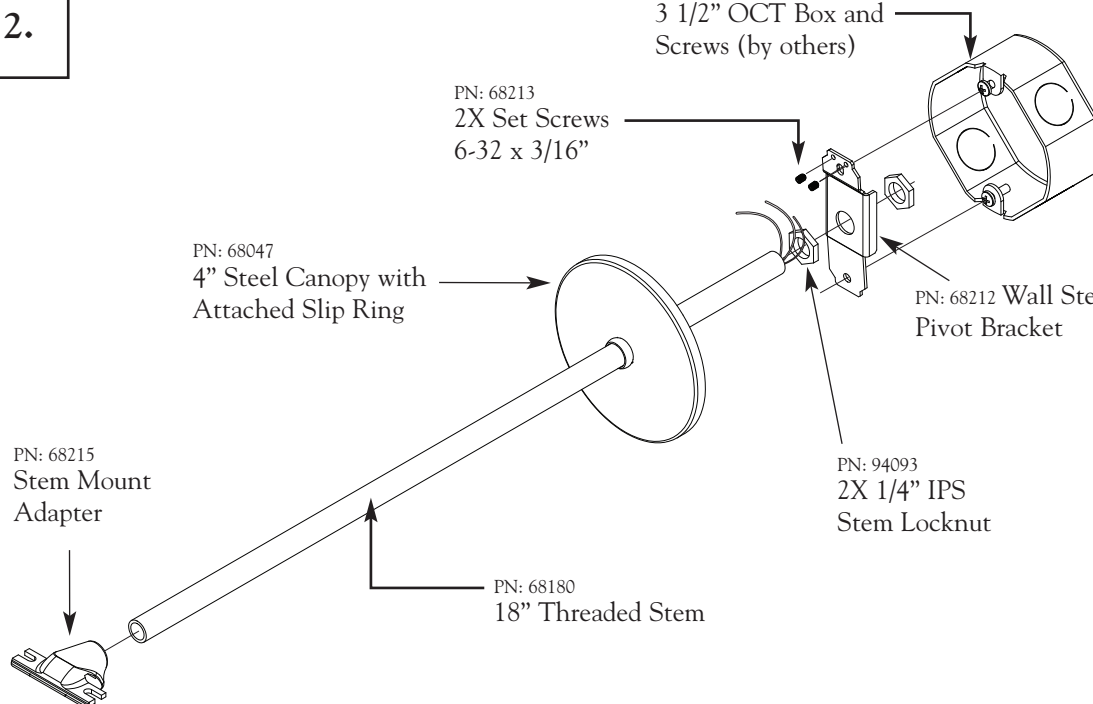


3 1/2" OCT Box (by others)

Dimension A

Fixture Length	Dimension A
2ft. Independent	20.0" (Standard)
4ft. Independent	36.0" (Standard)
8ft. Independent	60.0" (Standard)

2.



3 1/2" OCT Box and Screws (by others)

PN: 68213  
2X Set Screws  
6-32 x 3/16"

PN: 68047  
4" Steel Canopy with Attached Slip Ring

PN: 68212 Wall Stem Pivot Bracket

PN: 94093  
2X 1/4" IPS Stem Locknut

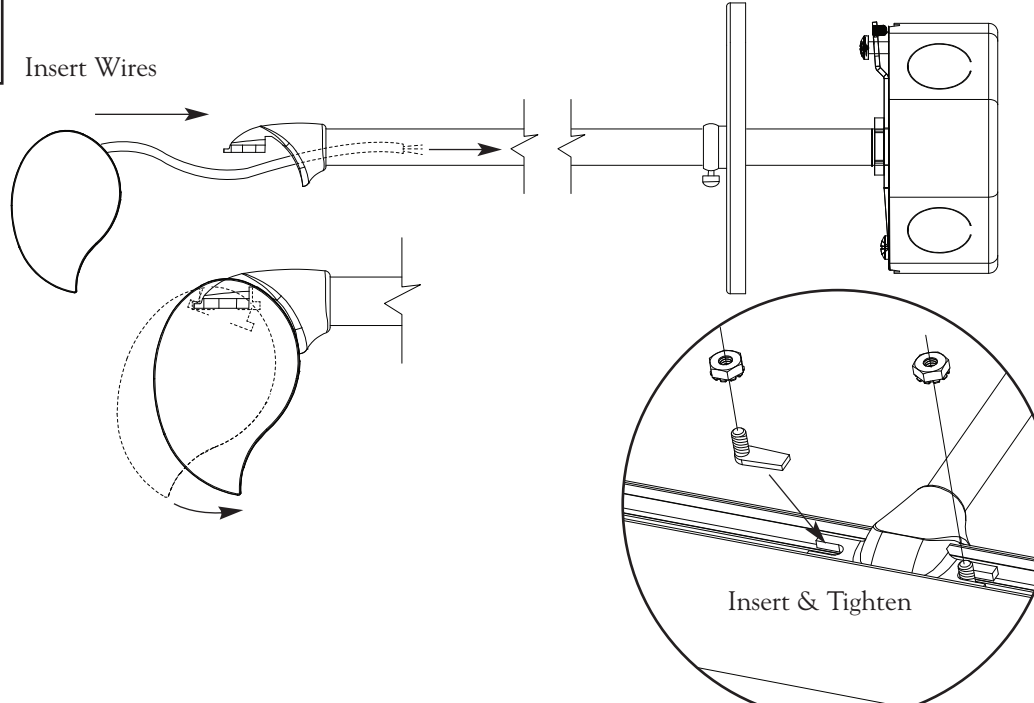
PN: 68215 Stem Mount Adapter

PN: 68180  
18" Threaded Stem

### INSTRUCTIONS

1. Install junction boxes to structure as shown. All power in junction box should be turned off during installation. (Custom spacing consult factory)
2. Assemble stem components as shown and attach to J-Box.
3. Insert power wires into stem and feed into J-Box. Pivot fixture onto stem adapter and secure locking fastener and #8 kep nut with 11/32" nut driver.
4. Tighten the top J-Box screws on each wall stem pivot bracket until level. Once they are level use a 1/16" hex key to lock the 2x set screws on each bracket. Complete wiring splice inside J-Box. Slide canopy to cover J-Box and lock set screw.
5. Turn on power to fixture to test proper function.

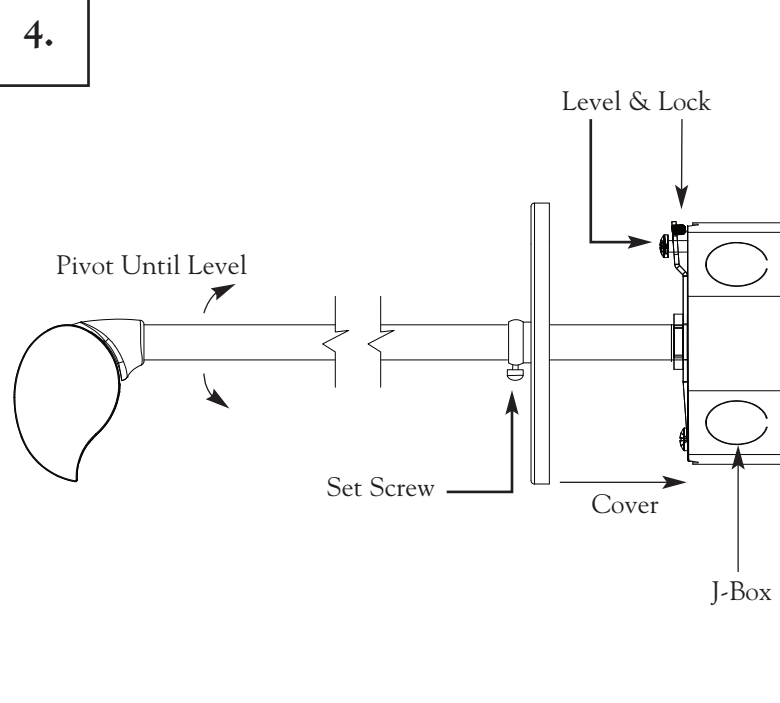
3.



Insert Wires

Insert & Tighten

4.



Level & Lock

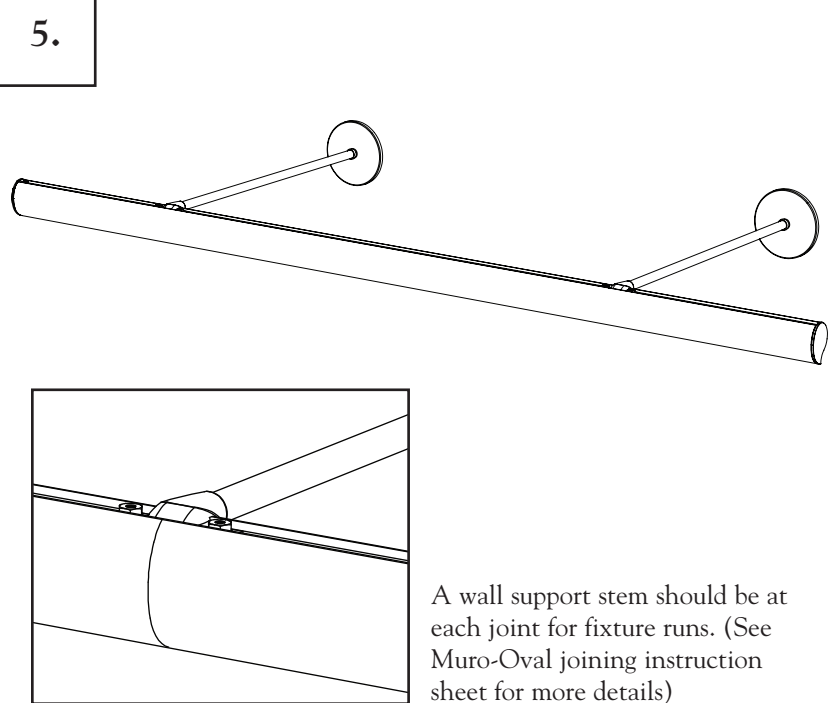
Pivot Until Level

Set Screw

Cover

J-Box

5.



A wall support stem should be at each joint for fixture runs. (See Muro-Oval joining instruction sheet for more details)

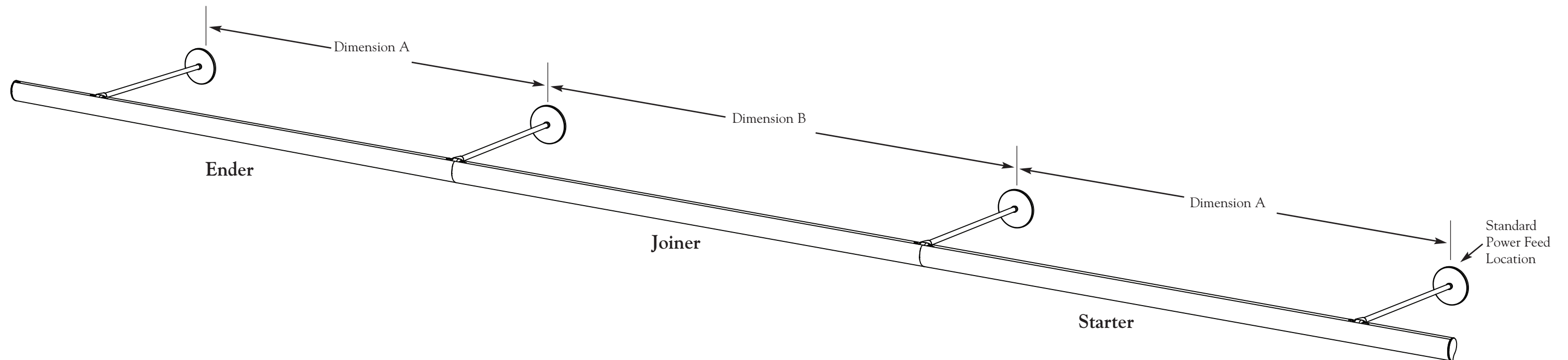
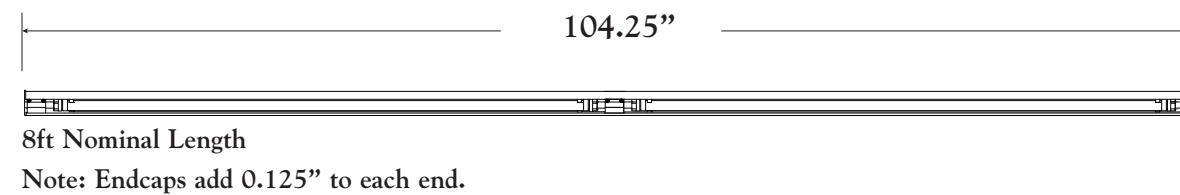
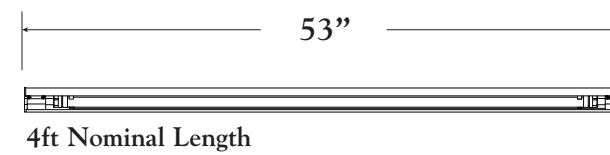
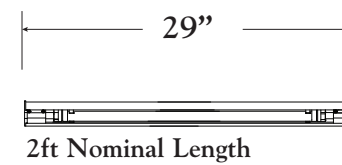
**NOTE:** All power connections to be installed to local/national codes by a certified electrician.

## Oval Instructions - Stem Wall Mount (Joining)

1. Boxes must be orientated as shown for mounting brackets to function properly.

3 1/2" OCT Box (by others)

Fixture Length	Dimension A	Dimension B
2ft.	24.5"	29"
4ft.	44.5"	53"
8ft.	82.125"	104.25"



98119 03/12