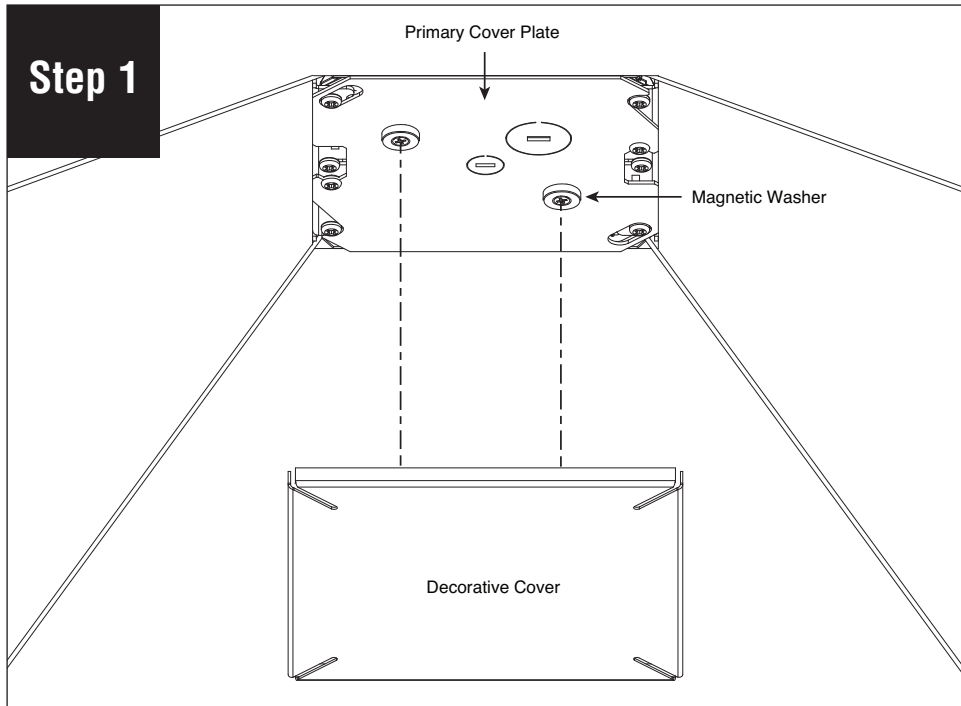
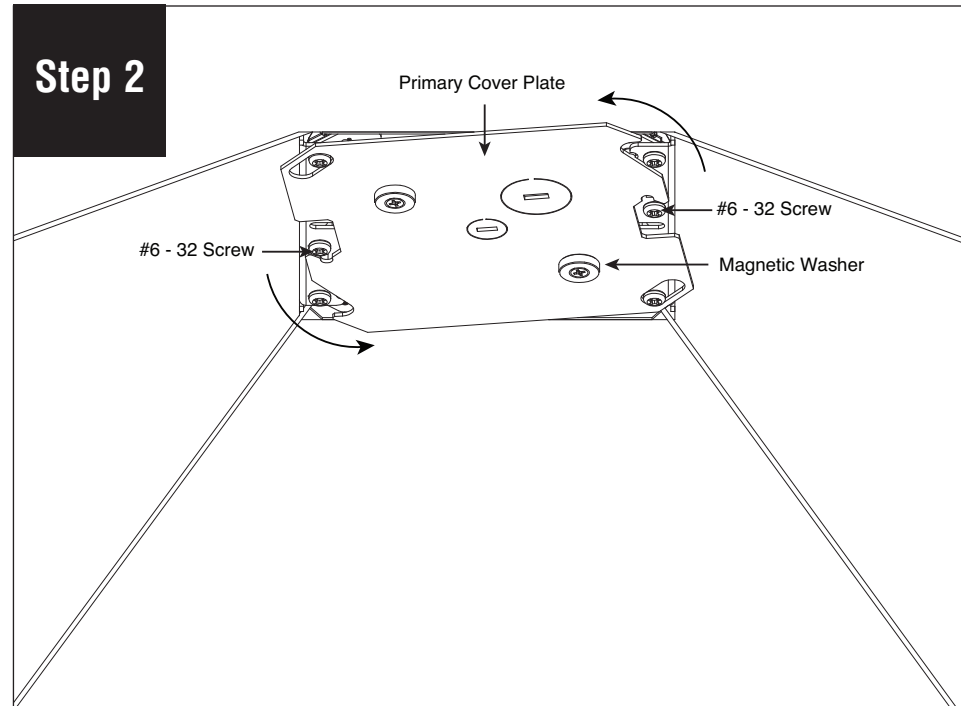


FINELITE

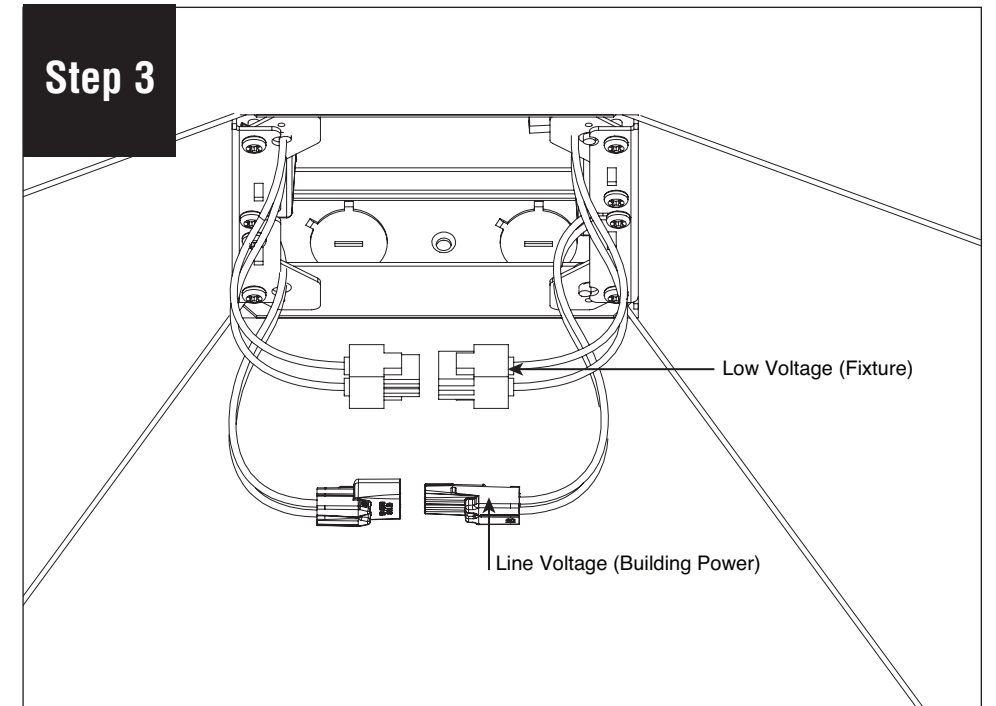
E1 - Indirect (Configurations) Driver Replacement Installation Instructions



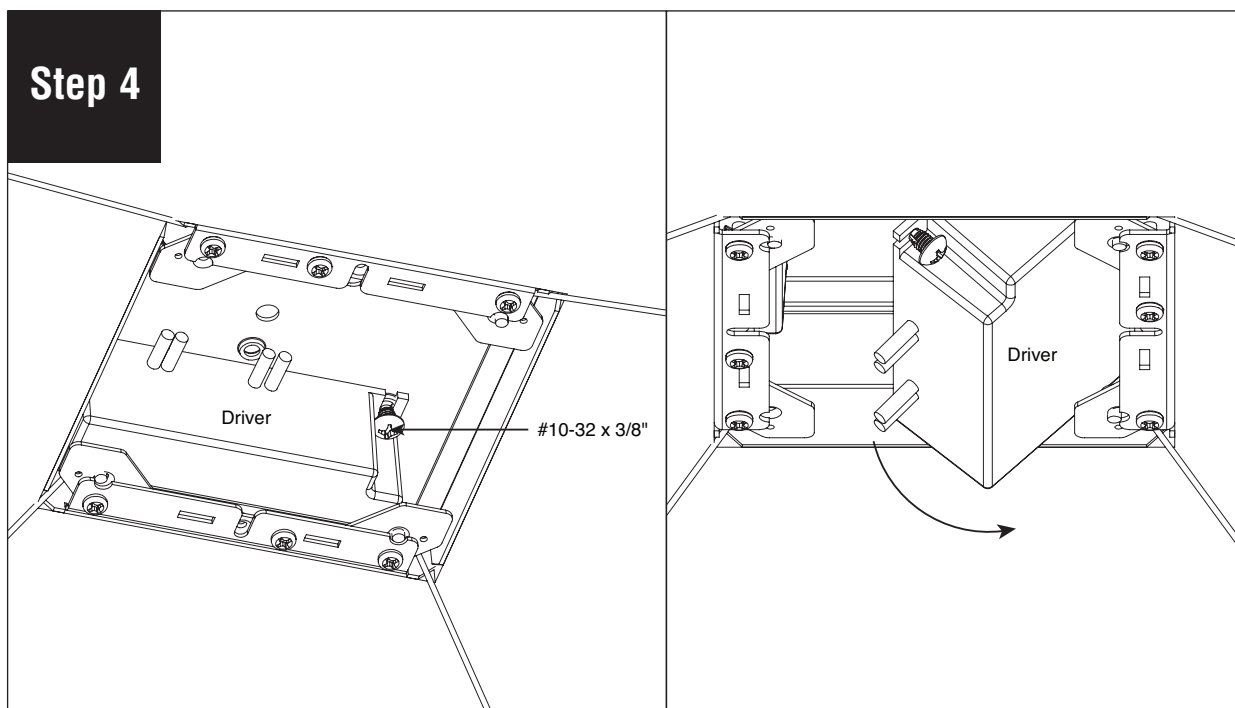
Remove decorative cover.



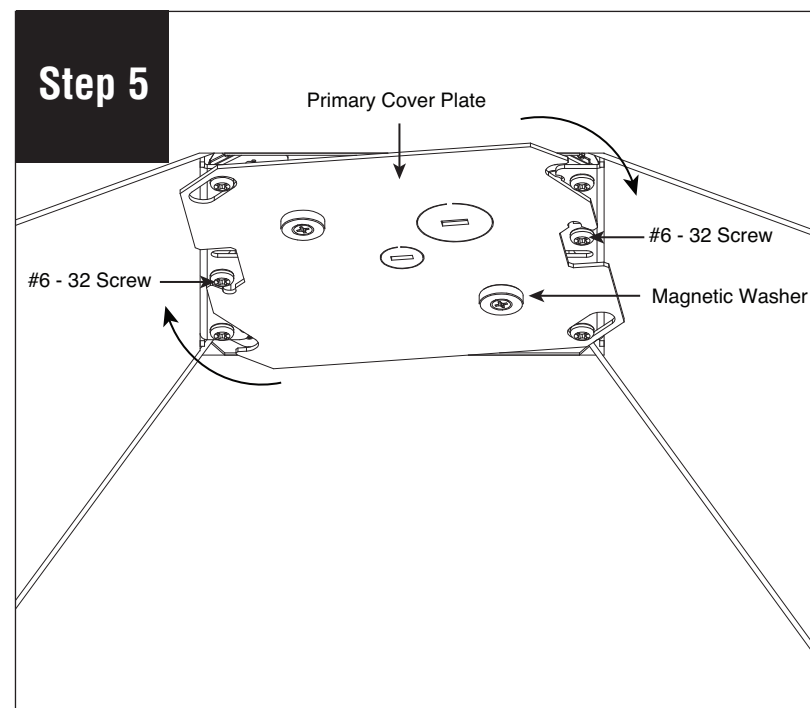
Remove primary cover plate by loosening 2X #6-32 screws and rotating cover plate to remove.



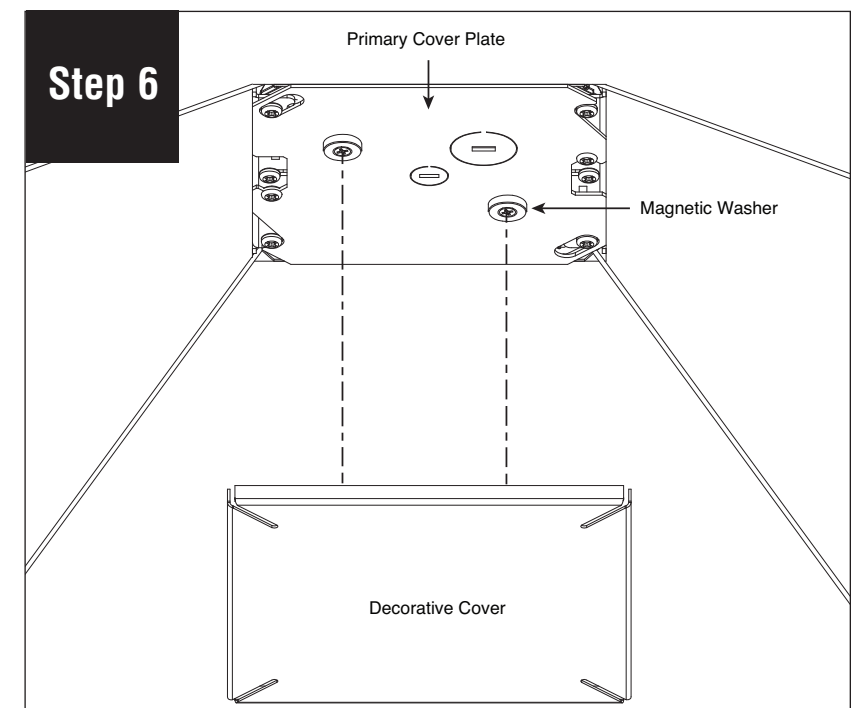
Locate and unplug all driver disconnects.



Remove driver screw (#10-32 x 3/8"). Slide the driver out from the power supply box. Mount new driver using driver screw and hook in power supply box. Reconnect driver to building power and fixture. Complete wiring according to national and local codes.



Reinstall primary cover plate.



Attach decorative cover to magnets on power supply box.

Note: All power connections to be installed to local/national codes by a Certified Electrician.