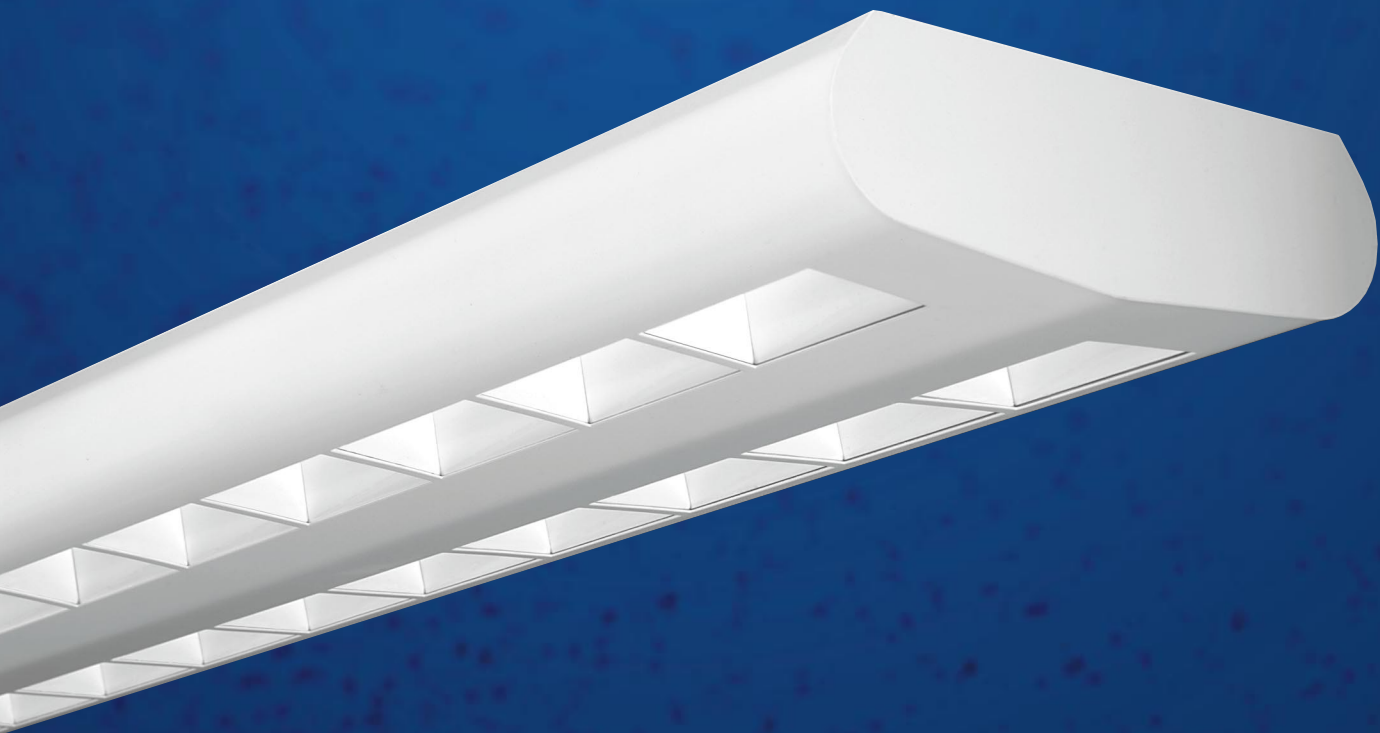


FINELITE

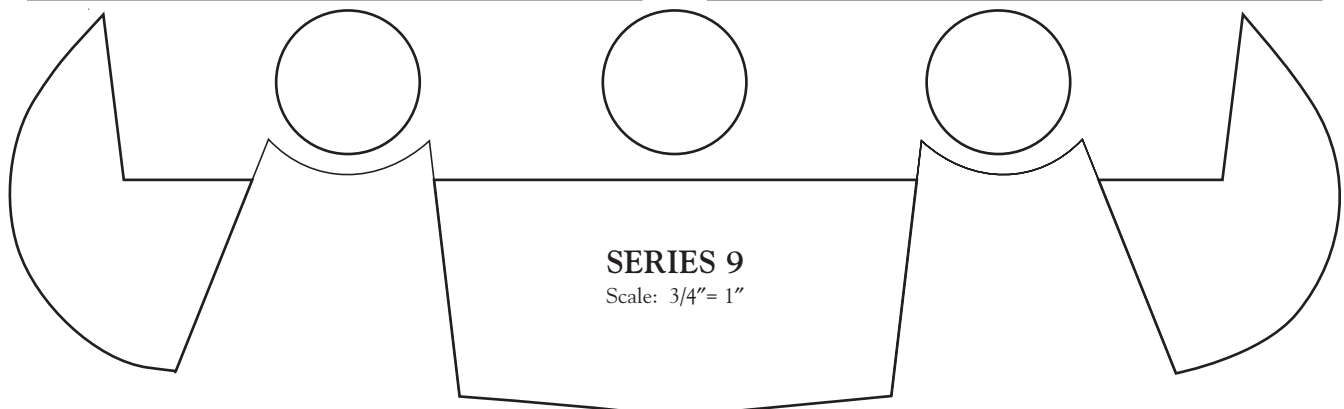
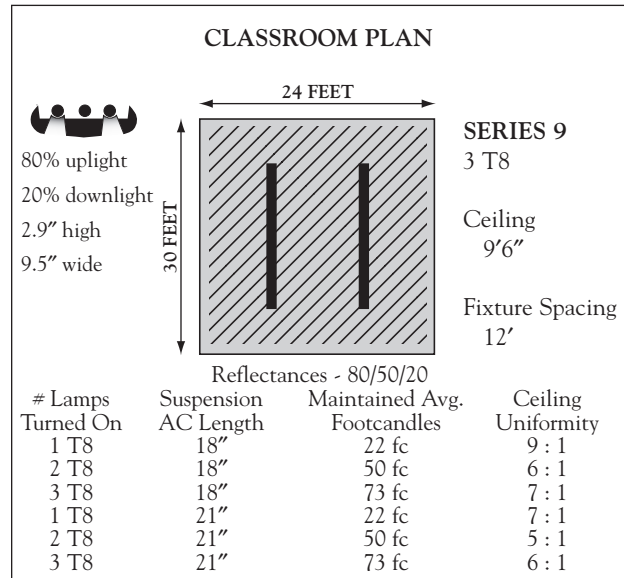
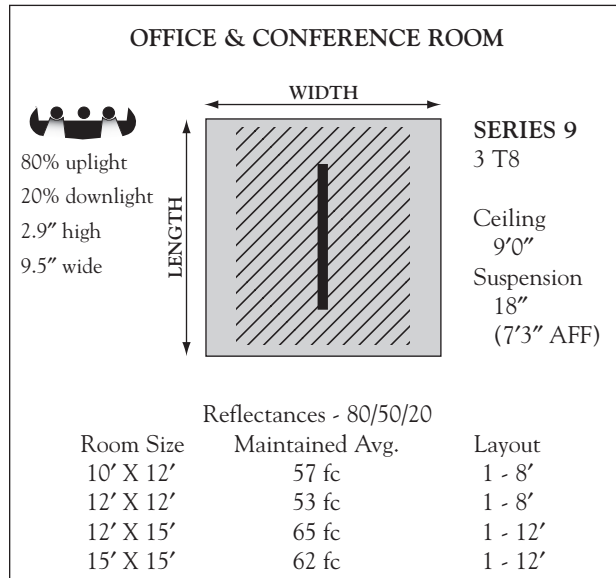
Series 9

Windows of Brightness



Better Lighting For A Better Workplace

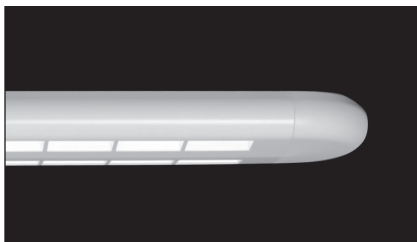
EXCELLENT PERFORMANCE



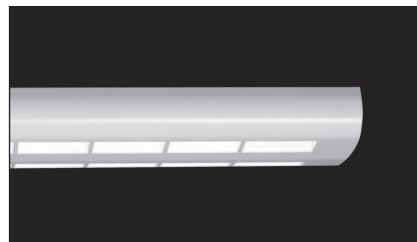
Series 9 offers extraordinary performance and versatile brightness. The 2 or 3 lamp cross sections (80% uplight, 20% downlight) provide optimum performance when used in classrooms, labs, boardrooms, conference/training rooms or areas requiring high light output. The 1 lamp cross section operates as a 97% indirect and 3% direct luminaire, appropriate for most rigorous VDT applications. Straight rows are assured by Finelite's steel die-formed interlocking aligner bracket. Tolerances are held to 0.005". Fixtures are pretested at the factory, and all row fixtures are supplied with pre-installed electrical quick connect mating plugs. Fixtures installed on-grid

are supplied with all necessary hardware, including the T-Bar clips. Installation is faster than with any other type of approved mounting method, lowering the project cost. Fixtures can be supplied from the factory pre-lamped, and every fixture is shipped in a protective plastic sleeve to keep it clean until project completion. Standard support cable is stainless steel, supplied with plated hardware. Semi-adjustable and fully adjustable lengths available. Dimming ballasts, battery back-up and other options are available. Finelite's Series 9 is a diverse luminaire featuring the style and quality suitable for a wide variety of lighting projects.

END OPTIONS & JOINT DETAIL



ROUNDED ENDCAP



FLAT ENDCAP



PRECISION JOINING

KSPD910.10/99