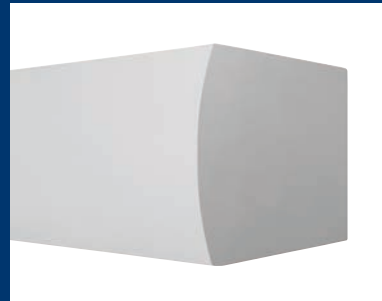
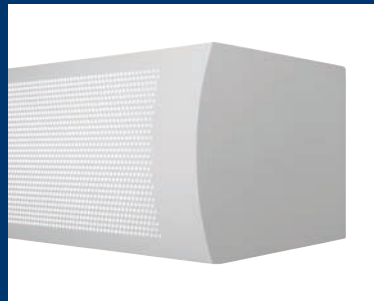
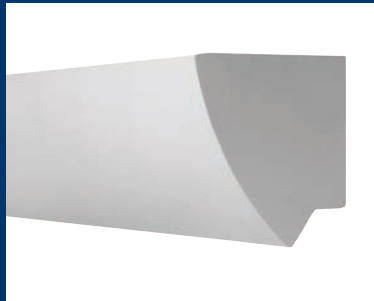
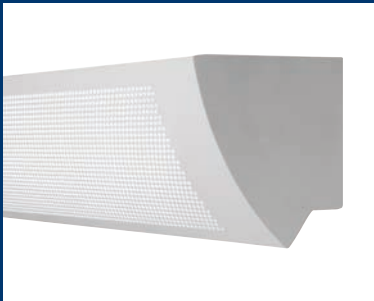


SERIES 17

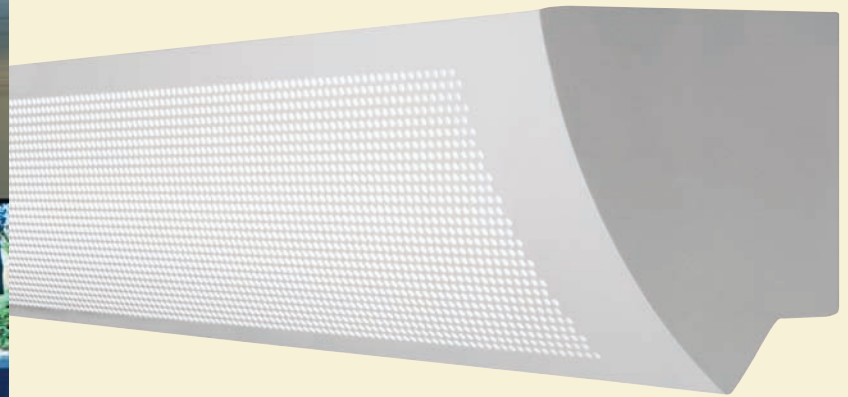


ADA Wallmount Luminaire

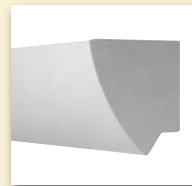
SERIES 17

ADA Wallmount Luminaire

ART HAS ITS OWN LANGUAGE



ACF Perf



ACF Solid



VCF Perf



VCF Solid

Design Alternatives

Series 17 features two timeless shapes. The Angled Curved Fascia (ACF) uses strong, clean lines and the Vertical Curved Fascia (VCF) uses simple, subtle lines allowing Series 17 to blend into a variety of architectural designs.

Fascia Options

The solid fascia focuses more attention on architectural design elements. Specify the perforated fascia to add a subtle brightness to corridors and hallways.

Series 17 is an ADA compliant wall mount luminaire designed with the understanding that shape can transform the experience of a space. Combining ADA compliance with the functionality of superior optical performance and energy saving bi-level controls, this luminaire is ideal for a number of applications, including hallways and stairwells in offices, schools, healthcare facilities and multi-family residential buildings.

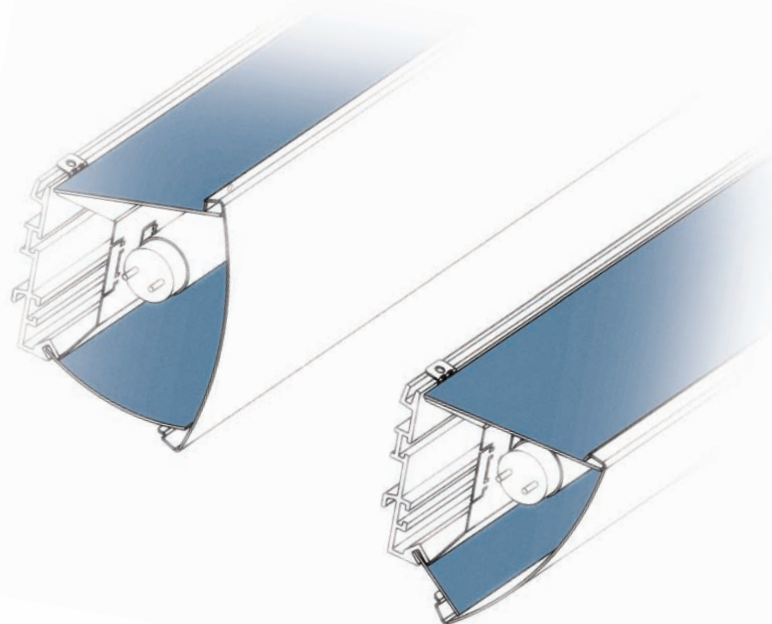


Energy Savings

Series 17 makes it easy to save energy while maintaining the purity of the luminaire form. The optional fixture integrated ultrasonic occupancy sensor can be specified for on/off functionality or with a bi-level switching ballast to reduce energy consumption while still maintaining light in the space.

Distinctive Options

Optional lenses, hidden from view, provide shielding to the lamp and prevent access to the luminaire. Specify clear lenses to keep dust and debris out of the luminaire, or select diffuse white lenses to soften the distribution and prevent direct view to the lamp.



Optical Performance

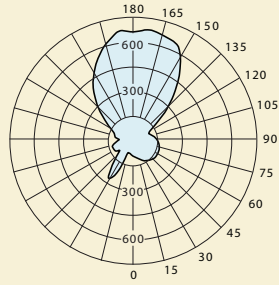
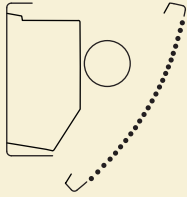
S17 - ACF - P - 1T8 - OPEN - 96W

Distribution: 72% Up / 28% Down

Efficiency: 75.5%

Peak Candela Value: 666@ 165°

LSI Report 24221



ZONE	LUMENS	%LAMP	%LUMINAIRE
0-30	101	3.27	4.33
0-40	191	6.19	8.20
0-60	389	12.56	16.63
0-90	661	21.32	28.23
40-90	469	15.13	20.03
60-90	271	8.76	11.60
90-180	1680	54.21	71.77
0-180	2341	75.53	100.00

CANDLEPOWER SUMMARY						
	0.0	22.5	45	67.5	90	Flux
0	92	92	92	92	92	
5	92	99	97	94	99	5
15	88	114	106	96	115	15
25	79	132	113	94	138	26
35	67	151	123	89	162	37
45	54	165	129	80	178	47
55	40	173	129	72	188	55
65	28	173	124	60	189	58
75	16	164	113	46	183	56
85	3	147	96	31	167	49
90	0	136	86	24	156	
95	18	123	75	19	142	41
105	107	101	73	89	116	51
115	213	137	153	224	141	86
125	320	240	285	372	229	131
135	418	385	442	465	367	162
145	503	544	579	542	527	169
155	572	640	624	603	648	142
165	619	664	658	634	666	92
175	644	656	653	647	658	32
180	651	651	651	651	651	

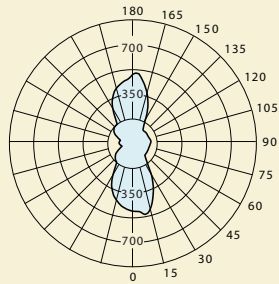
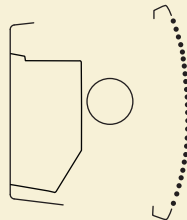
S17 - VCF - P - 1T8 - OPEN - 96W

Distribution: 49% Up / 51% Down

Efficiency: 71.6%

Peak Candela Value: 483@ 175°

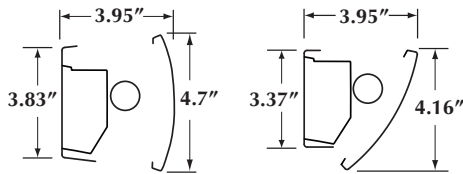
LSI Report 23967



ZONE	LUMENS	%LAMP	%LUMINAIRE
0-30	349	12.05	16.83
0-40	531	18.34	25.62
0-60	825	28.46	39.75
0-90	1071	36.93	51.59
40-90	539	18.59	25.97
60-90	245	8.48	11.84
90-180	1004	34.65	48.41
0-180	2075	71.58	100.00

CANDLEPOWER SUMMARY						
	0.0	22.5	45	67.5	90	Flux
0	471	471	471	471	471	
5	471	467	468	469	474	23
15	454	449	462	452	470	64
25	419	355	392	428	337	89
35	369	228	295	362	186	91
45	307	143	173	278	119	78
55	235	127	113	180	116	66
65	155	107	95	80	116	52
75	74	87	67	51	115	40
85	4	93	62	20	120	33
90	0	98	66	22	123	
95	1	99	67	24	126	35
105	67	99	78	52	122	43
115	149	118	101	65	117	52
125	231	133	113	138	117	62
135	306	137	139	237	115	70
145	371	182	240	320	127	77
155	422	302	342	387	237	78
165	458	398	415	446	374	59
175	476	466	468	471	483	22
180	478	478	478	478	478	

Lamps & Features



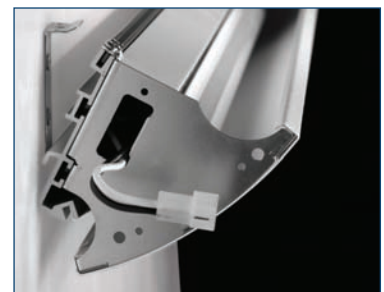
1 X **T8**

1 X **T5/T5HO**



Integrated Wiring

Plug together wiring between luminaires speeds up installation while ensuring error-free wiring.



Easy Installation

Series 17 features robust brackets and hidden mounting hardware resulting in a clean product installation.

FINELITE
Better Lighting