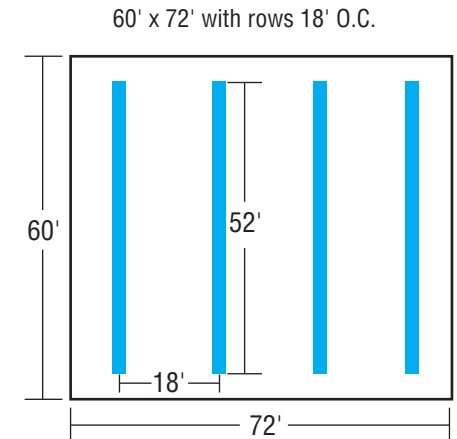
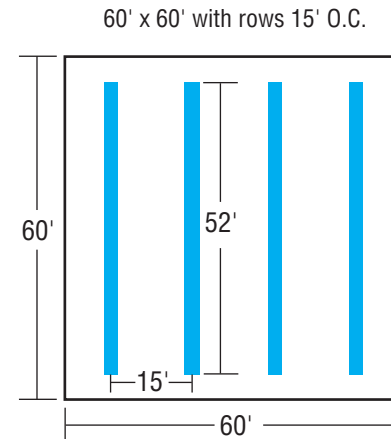
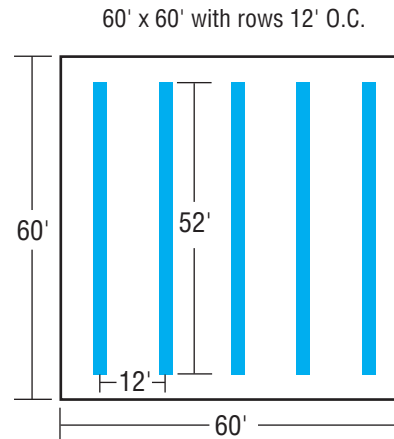
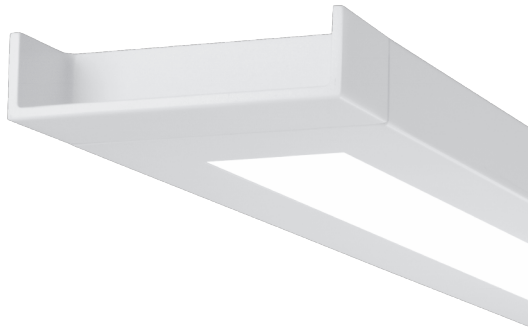


Series 16 LED AppGuide™

Open Plan 60'x60', 72'x60'

FINELITE®
Better Lighting



[Click here to view detailed calculations](#)

S - Standard Output, H - High Output	2E - S			2E - H			3E ↑ S/S ↓			3E ↑ H/S ↓			3E ↑ H/H ↓		
	12'	15'	18'	12'	15'	18'	12'	15'	18'	12'	15'	18'	12'	15'	18'
Average Light Level at Workplane (Footcandles)	34 fc	27 fc	23 fc	64 fc	52 fc	44 fc	49 fc	40 fc	34 fc	75 fc	61 fc	52 fc	93 fc	76 fc	65 fc
Ceiling Uniformity (Max:Min)	2:1	3:1	4:1	2:1	3:1	4:1	2:1	3:1	4:1	2:1	3:1	4:1	2:1	3:1	4:1
Energy Consumption (Lighting Power Density)	0.26 W/ft²	0.21 W/ft²	0.18 W/ft²	0.52 W/ft²	0.41 W/ft²	0.34 W/ft²	0.41 W/ft²	0.33 W/ft²	0.27 W/ft²	0.66 W/ft²	0.52 W/ft²	0.44 W/ft²	0.79 W/ft²	0.63 W/ft²	0.53 W/ft²

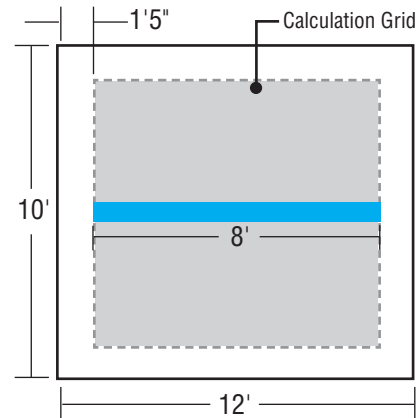
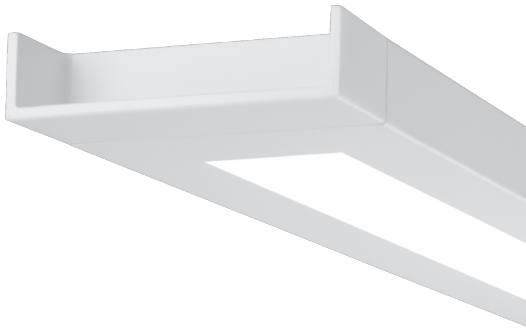
Notes

- Ceiling Height 9'6"
- Luminaire Height: 8'-0" AFF to bottom of luminaire
- Reflectances: 80/50/20
- Light levels are initial
- Actual field results may vary. Finelite recommends that design professionals be consulted when planning how to integrate lighting into the overall design of a project.
- See the Series 16 LED technical sheet on www.finelite.com for complete ordering information.

Series 16 LED AppGuide™


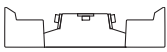
Private Plan 10'x12'

FINELITE®
Better Lighting



Series 16 LED can be used to create energy efficient designs for small spaces like private offices. One 8' pendant luminaire in a 10'x12' office can provide the proper illumination for horizontal and vertical surfaces. Supplemental illumination from a LED personal task light will give the occupant added flexibility.

[Click here to view detailed calculations](#)

S - Standard Output, H - High Output, V - Very High Output		2E - H	2E - V	3E ↑ S/S ↓	3E ↑ H/S ↓
					
Ambient Illumination -30" AFF (Footcandles)	AVG.	32 fc	41 fc	26 fc	37 fc
	MAX.	41 fc	52 fc	35 fc	49 fc
	MIN.	22 fc	28 fc	17 fc	25 fc
Vertical Average (Footcandles)	NORTH	19 fc	25 fc	14 fc	22 fc
	EAST	19 fc	24 fc	14 fc	22 fc
Energy Consumption (Lighting Power Density)		0.48 W/ft ²	0.62 W/ft ²	0.38 W/ft ²	0.61 W/ft ²

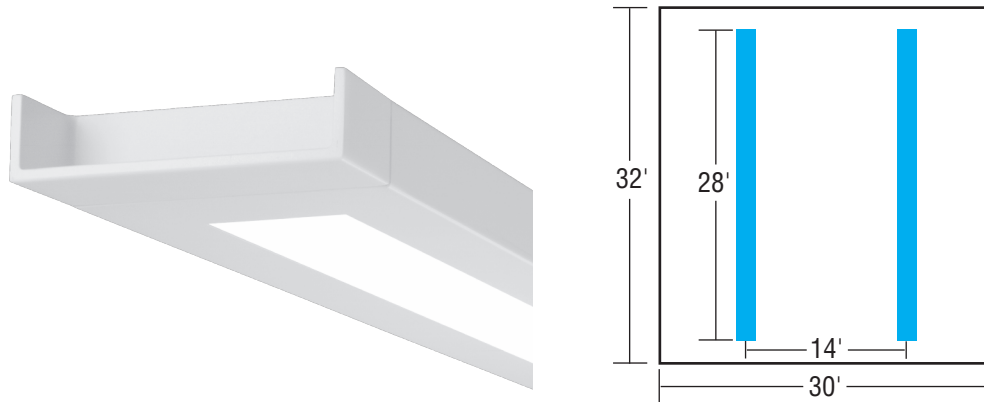
Notes

- 10' x 12' room
- Ceiling Height 9'-0"
- Luminaire Height: 7'6" AFF to bottom of luminaire
- Reflectances: 80/50/20
- Light levels are initial
- Actual field results may vary. Finelite recommends that design professionals be consulted when planning how to integrate lighting into the overall design of a project.
- See the Series 16 LED technical sheet on www.finelite.com for complete ordering information.

Series 16 LED AppGuide™

Classroom Plan 30'x32'

FINELITE®
Better Lighting



Series 16 LED is an excellent choice to illuminate today's demanding classroom environment. Simple switching or using the inherent dimmability of LEDs provides classrooms with general and audiovisual modes to enhance the different activities conducted in the classroom. Supplemental vertical illumination will highlight text written on the whiteboard.

[Click here to view detailed calculations](#)

S - Standard Output, H - High Output	2E - H	3E ↑ H/S ↓	3E ↑ H/H ↓
Avg. Illumination at Desk Plane - General Mode (Footcandles)	42 fc	49 fc	62 fc
Avg. Illumination at Desk Plane - AV Mode (Footcandles)	11 fc	13 fc	16 fc
Avg. Vertical Illumination - General Mode - East Wall (Footcandles)	20 fc	23 fc	27 fc
Avg. Vertical Illumination - General Mode - North Wall (Footcandles)	22 fc	25 fc	29 fc
Energy Consumption General Mode (Lighting Power Density)	0.42 W/ft ²	0.53 W/ft ²	0.64 W/ft ²
Energy Consumption AV Mode (Lighting Power Density)	0.11 W/ft ²	0.13 W/ft ²	0.16 W/ft ²

Notes

- Ceiling Height 10'
- Luminaire Height: 8'-0" AFF to bottom of luminaire
- Reflectances: 80/50/20
- Light levels are initial
- Actual field results may vary. Finelite recommends that design professionals be consulted when planning how to integrate lighting into the overall design of a project.
- See the Series 16 LED and HPW LED technical sheet on www.finelite.com for complete ordering information.

HPW LED Whiteboard Illumination

Research proves that supplemental whiteboard illumination will focus attention and highlight whiteboard content.

HPW LED

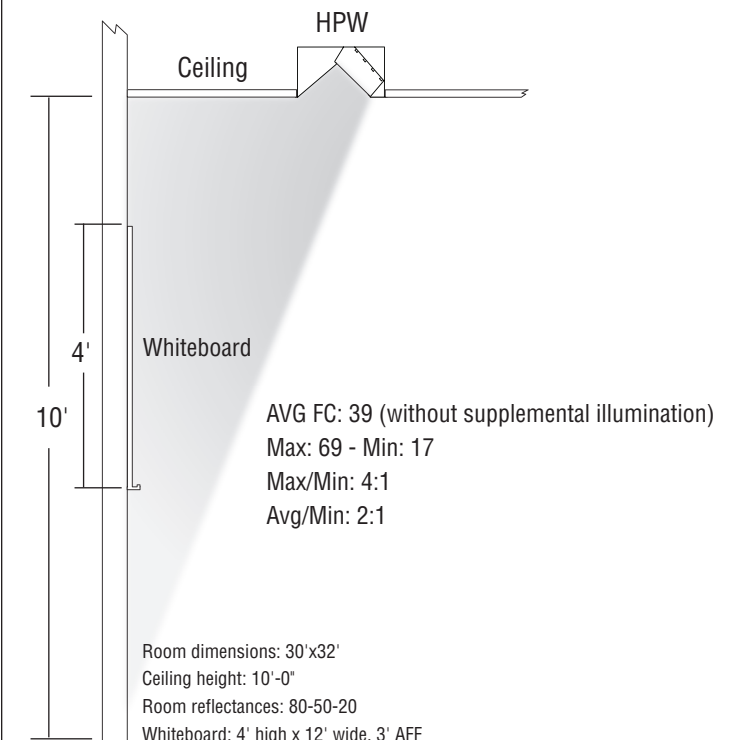
Total luminaire output (4' luminaire): 3038 lumens / 28.3 Watts

CCT: 3500K

24" setback

Average Illumination without ambient contribution: 39 fc

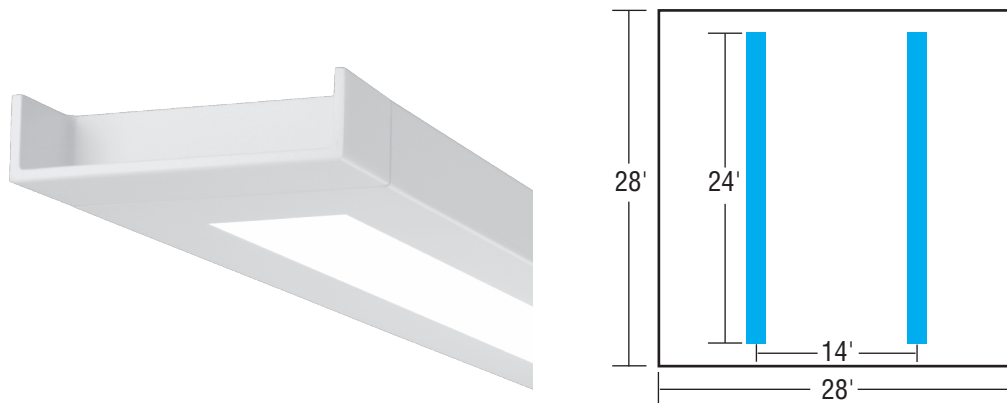
Uniformity (Max:Min): 4:1



Series 16 LED AppGuide™

Classroom Plan 28'x28'

FINELITE®
Better Lighting



Series 16 LED is an excellent choice to illuminate today's demanding classroom environment. Simple switching or using the inherent dimmability of LEDs provides classrooms with general and audiovisual modes to enhance the different activities conducted in the classroom. Supplemental vertical illumination will highlight text written on the whiteboard.

[Click here to view detailed calculations](#)

S - Standard Output, B - Boosted Standard Output, H - High Output	2E - H	3E ↑ B/S ↓	3E ↑ H/B ↓
Avg. Illumination at Desk Plane - General Mode (Footcandles)	42 fc	38 fc	53 fc
Avg. Illumination at Desk Plane - AV Mode (Footcandles)	11 fc	10 fc	14 fc
Avg. Vertical Illumination - General Mode - East Wall (Footcandles)	23 fc	18 fc	27 fc
Avg. Vertical Illumination - General Mode - North Wall (Footcandles)	22 fc	18 fc	26 fc
Energy Consumption General Mode (Lighting Power Density)	0.44 W/ft ²	0.41 W/ft ²	0.59 W/ft ²
Energy Consumption AV Mode (Lighting Power Density)	0.11 W/ft ²	0.10 W/ft ²	0.15 W/ft ²

Notes

- Ceiling Height 10'
- Luminaire Height: 8'-0" AFF to bottom of luminaire
- Reflectances: 80/50/20
- Light levels are initial

- Actual field results may vary. Finelite recommends that design professionals be consulted when planning how to integrate lighting into the overall design of a project.
- See the Series 16 LED and HPW LED technical sheet on www.finelite.com for complete ordering information.

HPW LED Whiteboard Illumination

Research proves that supplemental whiteboard illumination will focus attention and highlight whiteboard content.

HPW LED

Total luminaire output (4' luminaire): 3038 lumens / 28.3 Watts

CCT: 3500K

24" setback

Average Illumination without ambient contribution: 39 fc

Uniformity (Max:Min): 4:1

