

HP-WG Wall Bracket Mount T-Bar Installation Instructions

Overview

NOTES

- All power connections should be installed according to local/national codes by a Certified Electrician.
- This installation requires **proper support** as each luminaire is being installed.
- **DO NOT attempt to join luminaires together on the floor.** Damage may result when lifted.



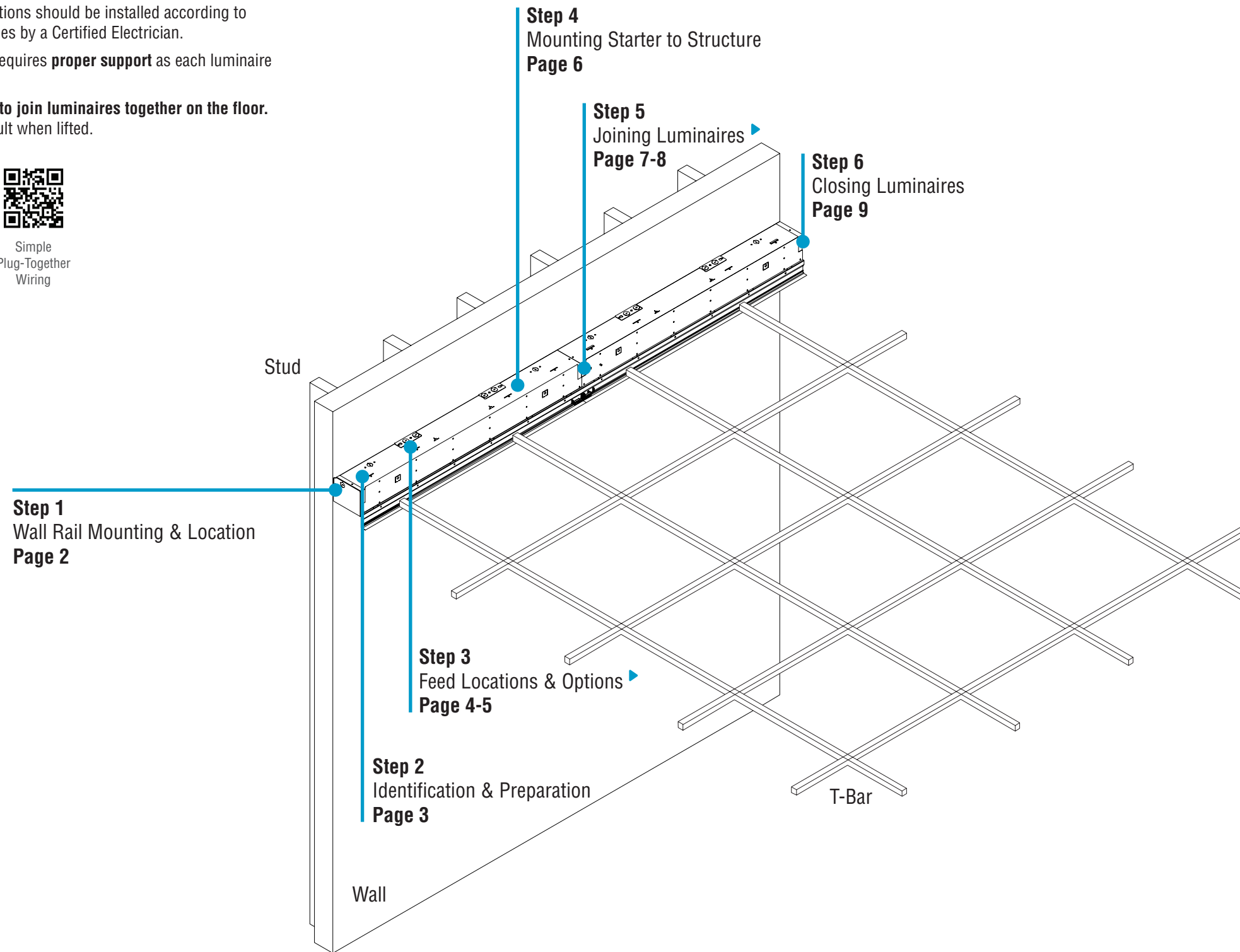
HELPFUL
VIDEO



0-10V
Dimming



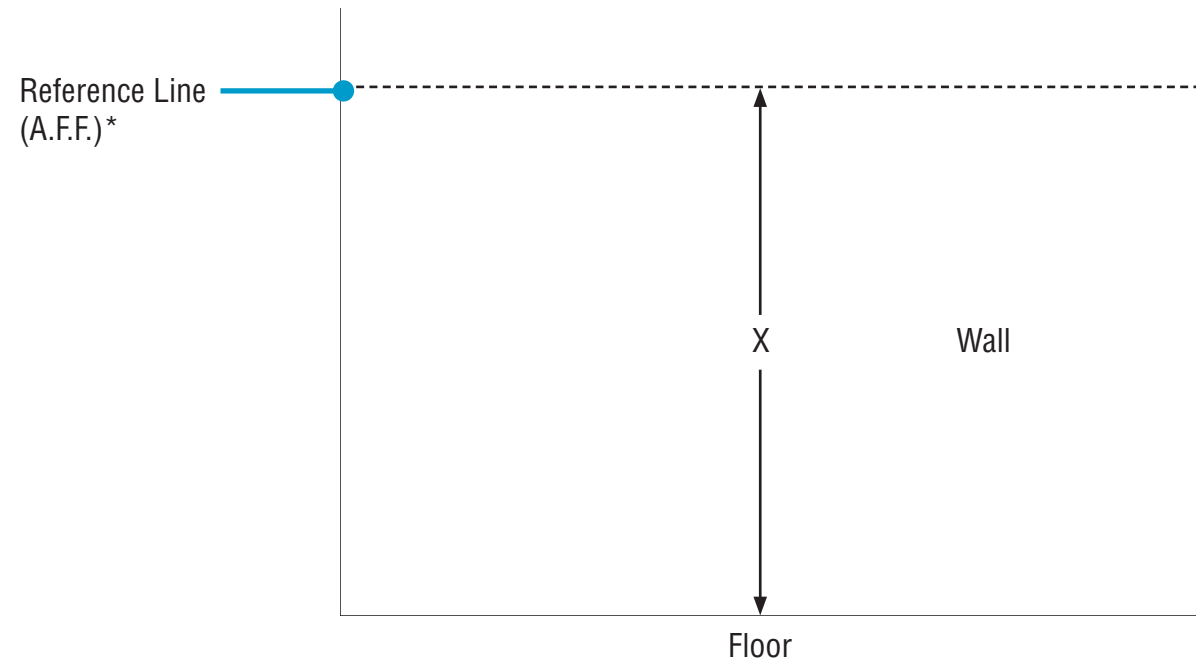
Simple
Plug-Together
Wiring



HP-WG Wall Bracket Mount T-Bar Installation Instructions

Step 1 - Wall Rail Mounting & Location

A. Wall Rail Location Front View



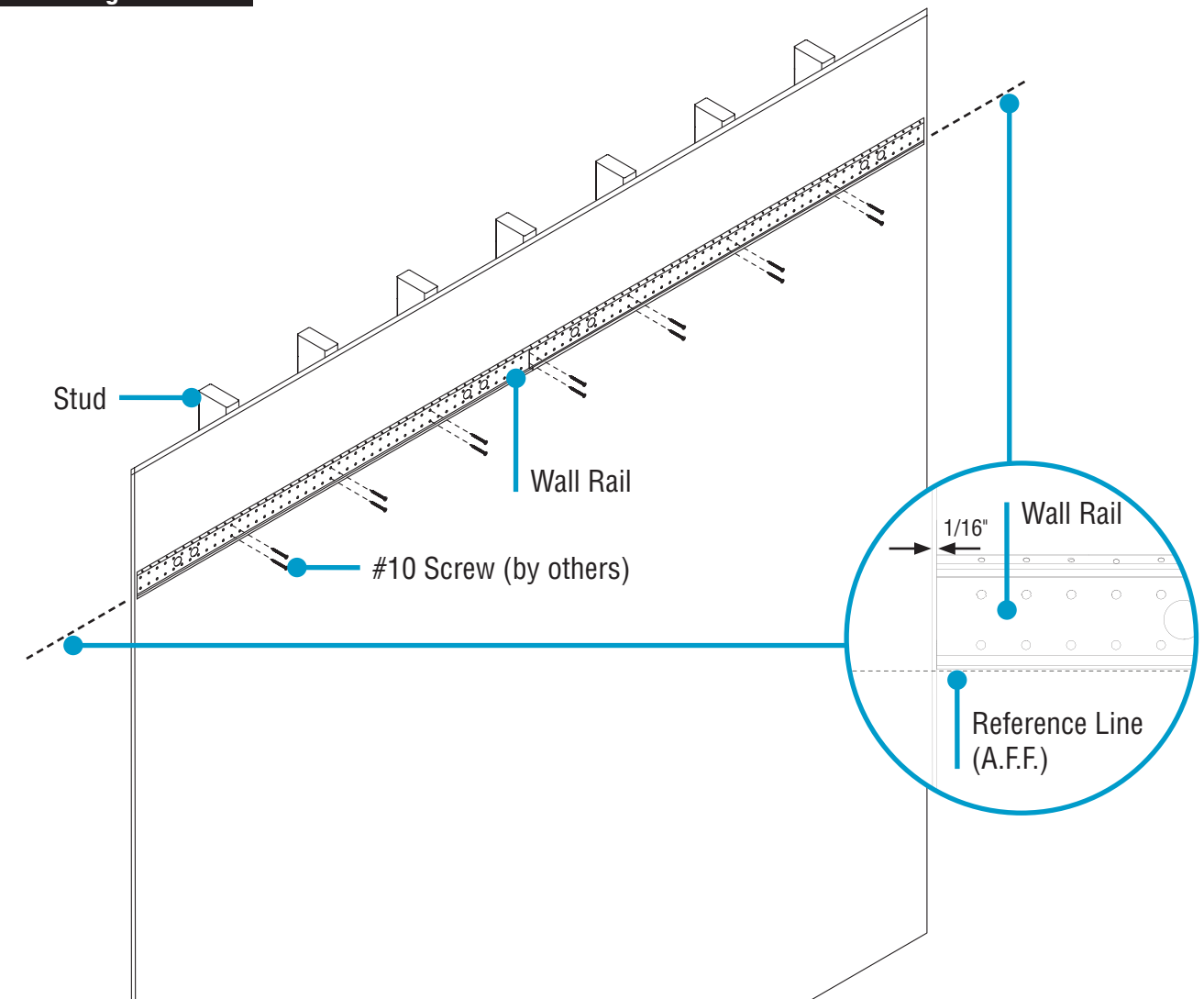
Luminaire Depth	Height from Bottom of the Wall Rail
	X (in)
2"	Ceiling Height A.F.F. + 2-1/8
4"	Ceiling Height A.F.F. + 4-1/8
6"	Ceiling Height A.F.F. + 6-1/8

- **NOTE:** Tolerances on dimensions are $\pm 1/16"$
- Use provided table to measure wall rail height and mark it on all walls.

*A.F.F.: Above Finished Floor



B. Mounting Wall Rail Side View



- Use appropriate #10 screws to secure wall rails to wall studs.

HP-WG Wall Bracket Mount T-Bar Installation Instructions

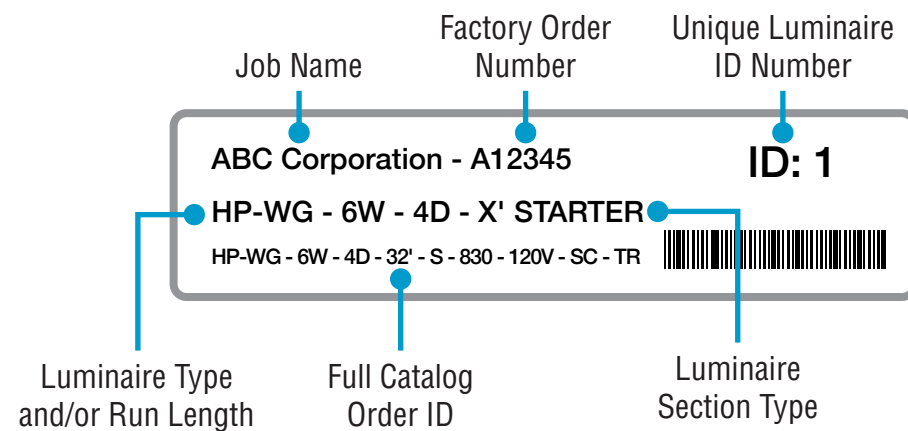
Step 2 - Identification & Preparation

A. Identify Luminaires

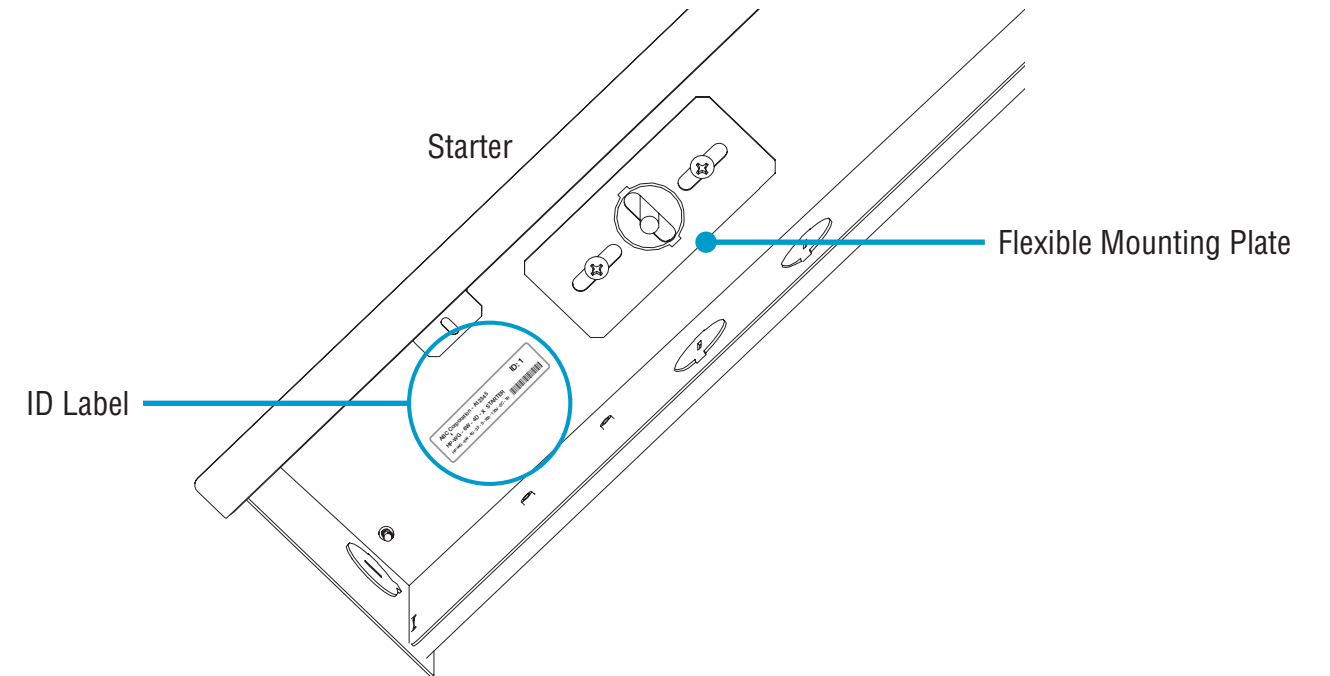


CAUTION

Arrange luminaires in order according to ID# at their install locations.



Bottom-Up View



- Identify all luminaires by their ID label that can be found on the box and inside the luminaire.
- **NOTE:** Exact location of labels in these areas may vary.
- Remove all luminaires from their box.
- Refer to Record Drawings that can be found in the hardware kit.

Kitted Hardware

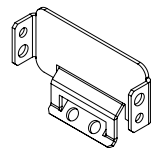
- Finelite has provided items listed here, with their Finelite part numbers. These items can be found in separate boxes shipped with the luminaire.
- Account for all parts and set aside until they are needed.
- All other hardware needed for this installation will be by others.



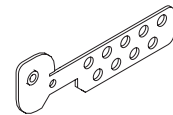
#8-18 x 1/4" Screw
Part# 69026
Feed Locations & Options
p. 4, Step 3
Mounting Starter to Structure
p. 6-7, Step 4
Joining Luminaires
p. 8, Step 5
Closing Luminaires
p. 9, Step 6



#10-32 Screw
Part# 94144
Feed Locations & Options
p. 4, Step 3



T-Bar Joiner Bracket
Part# 11302
Joining Luminaires
p. 7, Step 5



T-Bar Bracket
Part# 11303
Closing Luminaires
p. 9, Step 6

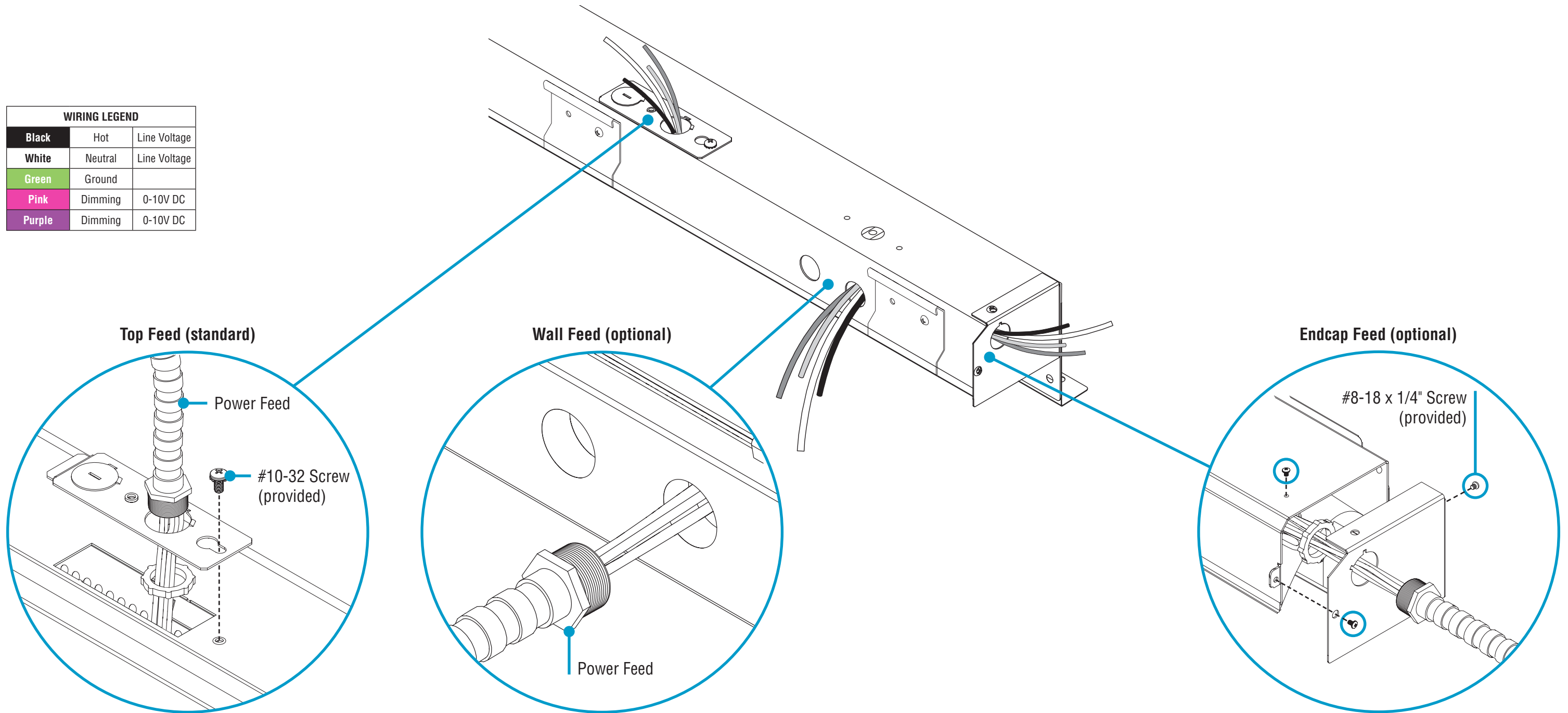



Cover Sleeve
Part# 10719
Closing Luminaires
p. 9, Step 6

HP-WG Wall Bracket Mount T-Bar Installation Instructions

Step 3 - Feed Locations & Options

WIRING LEGEND		
Black	Hot	Line Voltage
White	Neutral	Line Voltage
Green	Ground	
Pink	Dimming	0-10V DC
Purple	Dimming	0-10V DC



 #8-18 x 1/4" Screw
(provided)

 #10-32 Screw
(provided)

CONTINUED



0-10V
Dimming

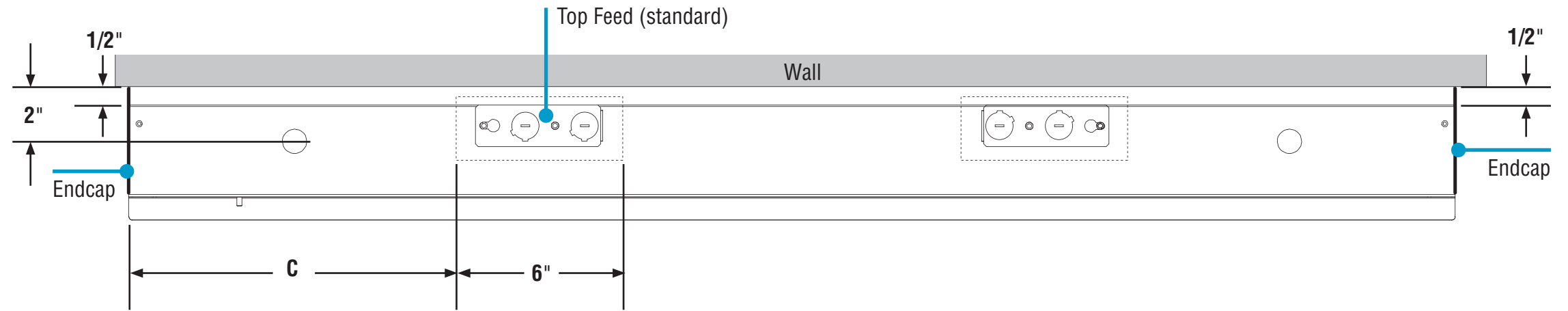
4 of 9

HP-WG Wall Bracket Mount T-Bar Installation Instructions

Step 3 - Feed Locations & Options

Top Feed Top View

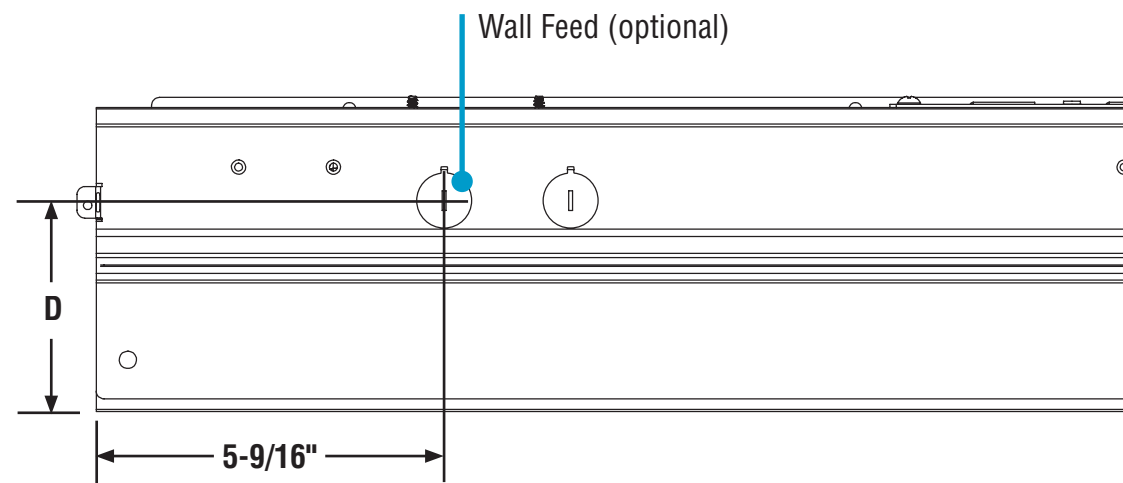
Luminaire Length	C (in)
2'	5
3'	5
4'	12
8'	12



Top Feed Location (standard)

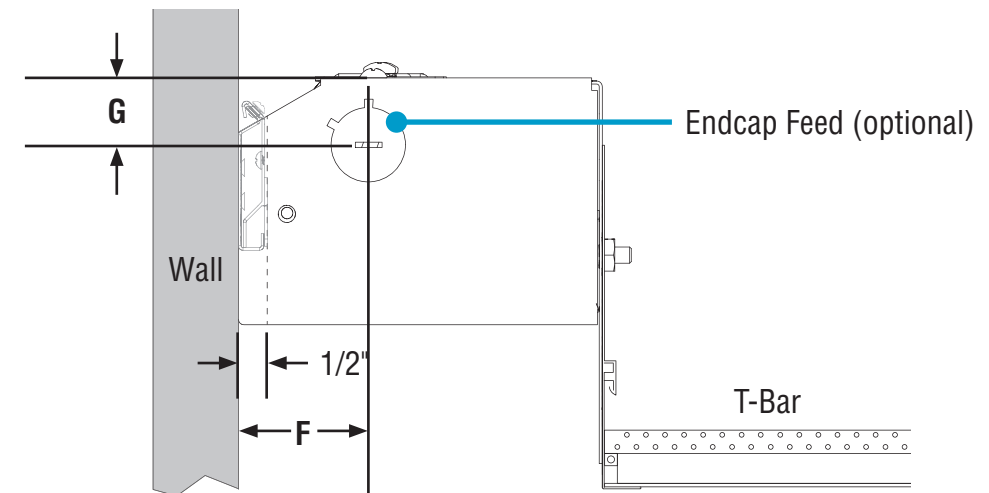
- Use chart above to find measurement of C for feed location.
- **NOTE:** For tailored length luminaire power feed locations, contact factory.

Wall Feed Back View



Luminaire Depth	D (in)
2"	3-5/16
4"	5-5/16
6"	7-5/16

Endcap Feed Side View

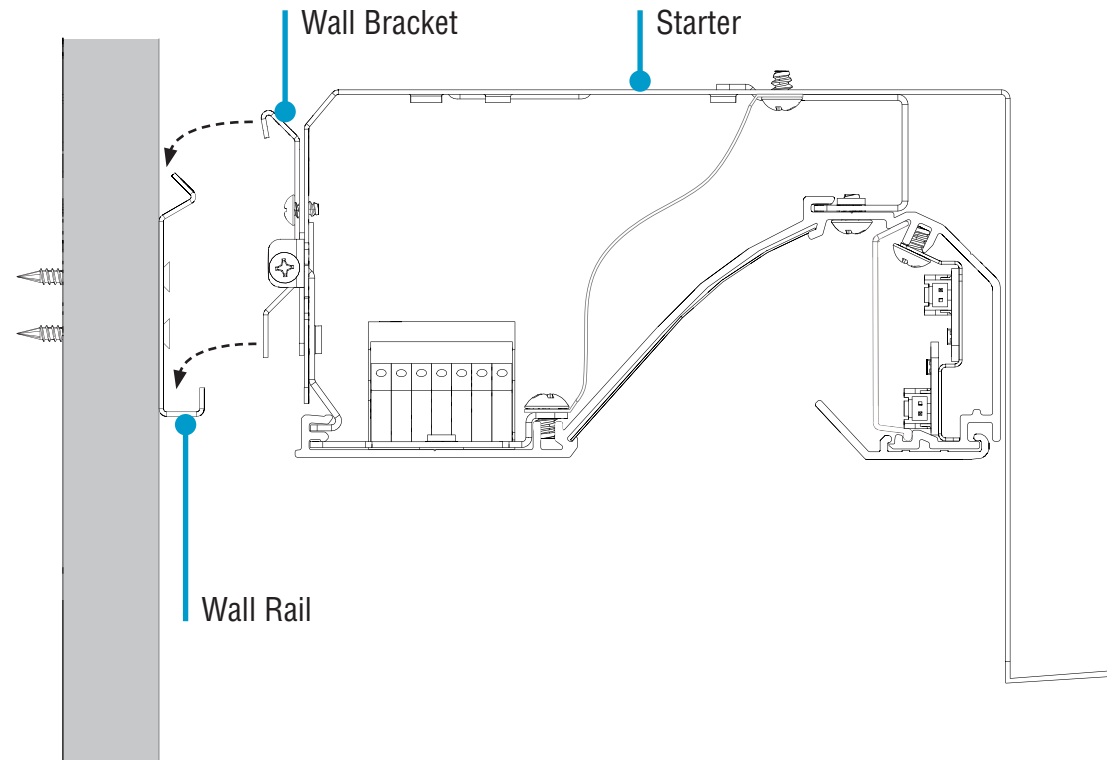


Luminaire Width	F (in)	G (in)
6"	2	13/16

HP-WG Wall Bracket Mount T-Bar Installation Instructions

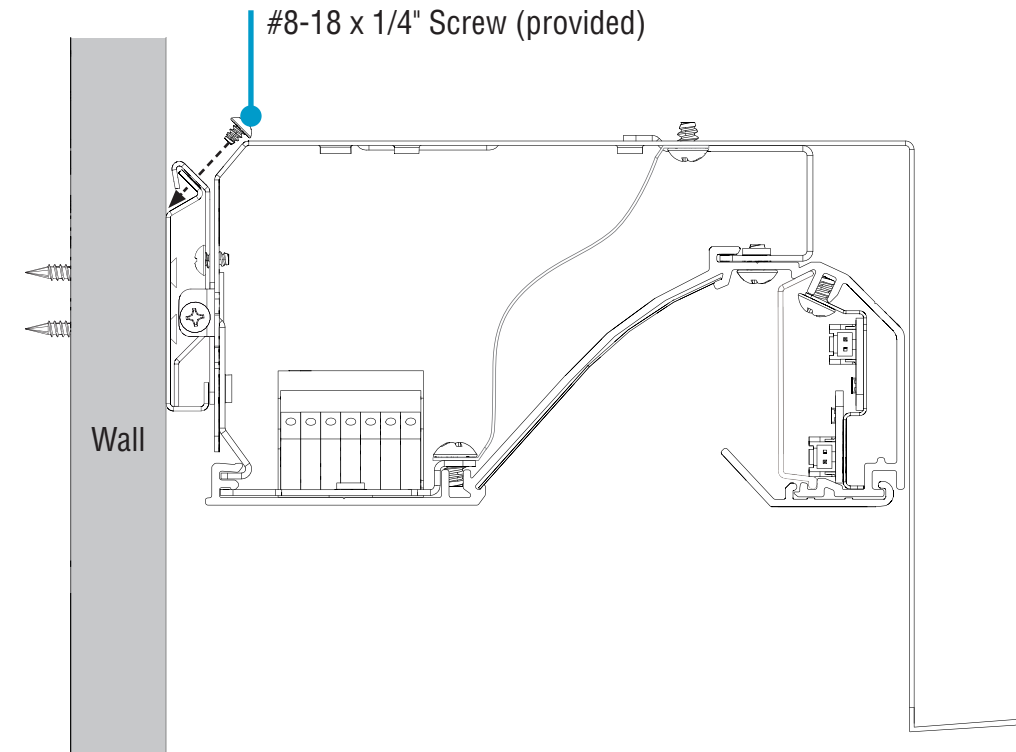
Step 4 - Mounting Starter to Structure

A. Mount Luminaire Side View




- Make electrical connections according to feed location and options.
- Mount starter luminaire to wall rail by ensuring wall bracket grabs top of wall rail.
- Align end of starter luminaire to start of main wall rail.

B. Secure Luminaire Side View



- Secure starter luminaire to wall rail with #8-18 x 1/4" screw through wall bracket.
- If there is no joiner/ender, then tighten fully. **PROCEED TO STEP 6.**

 #8-18 x 1/4" Screw
(provided)

HP-WG Wall Bracket Mount T-Bar Installation Instructions

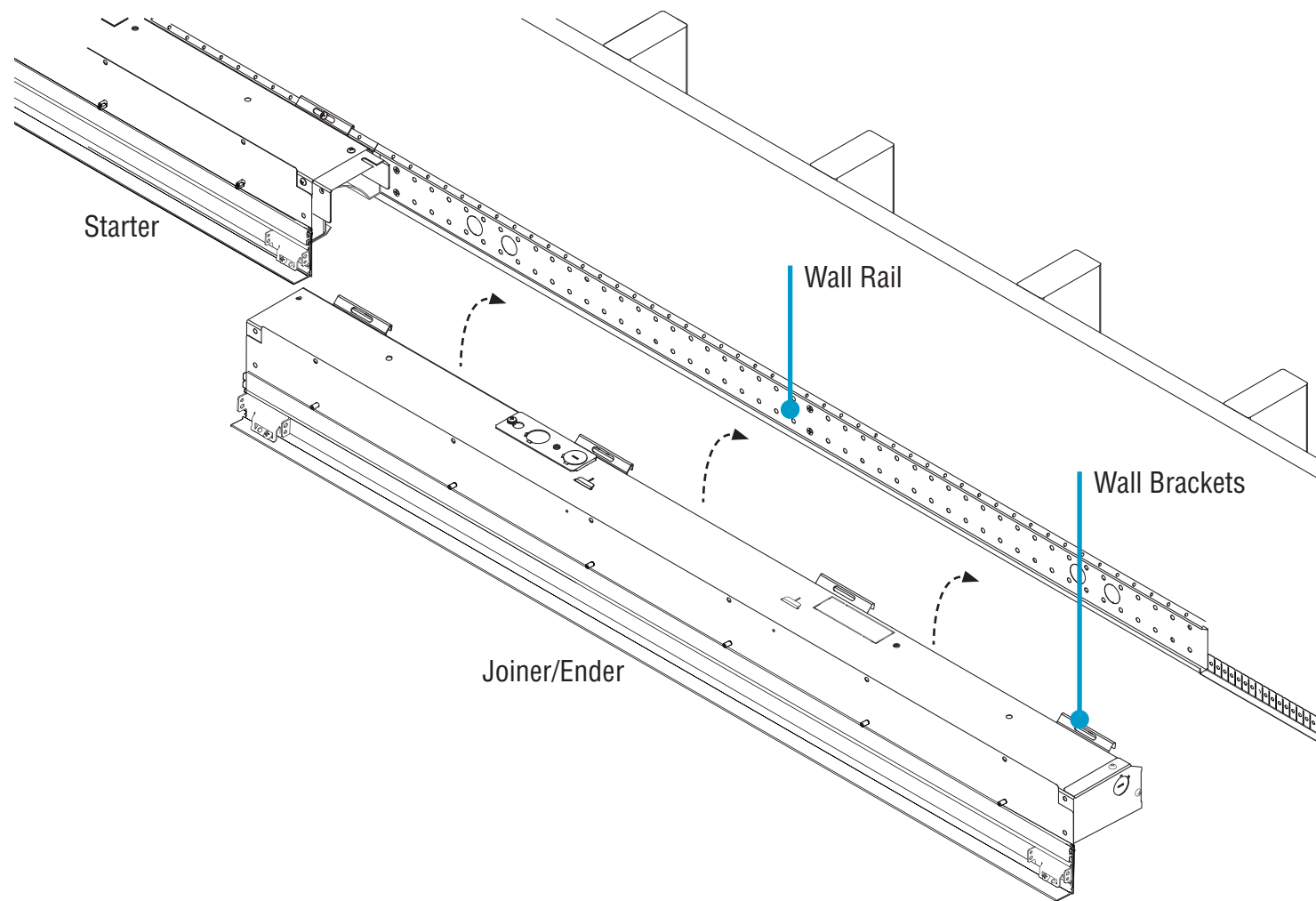
Step 5 - Joining Luminaires

A. Align Starter and Joiner/Ender Top View



CAUTION

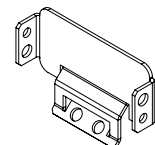
DO NOT attempt to join luminaires together on the floor. Damage may result when lifted. Follow these instructions.



- Mount joiner/ender luminaire to wall rail by ensuring wall bracket grabs top of wall rail.
- Align end of starter luminaire to start of main wall rail.

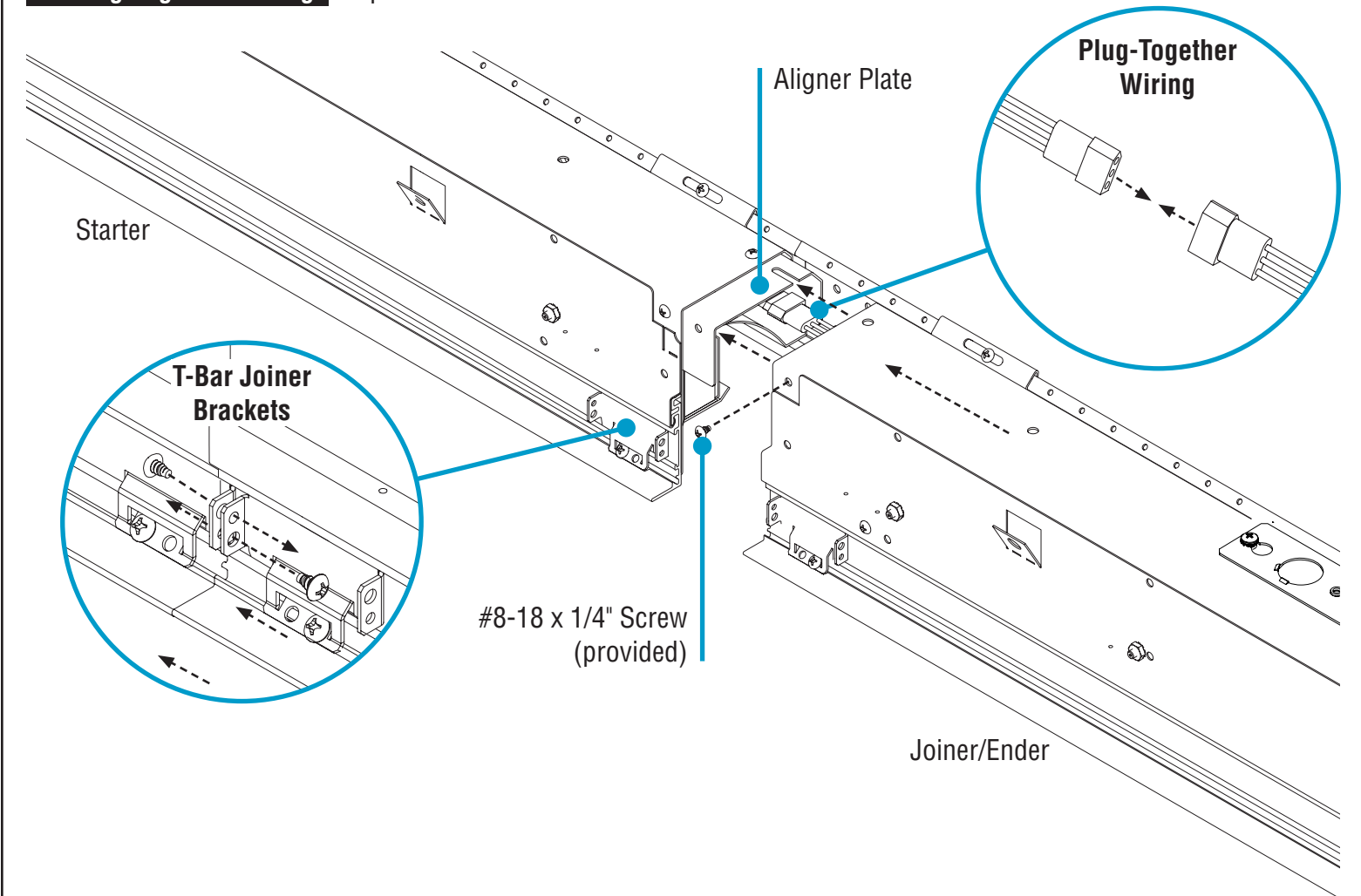


#8-18 x 1/4" Screw (provided)



T-Bar Joiner Bracket (provided)

B. Plug-Together Wiring Top View



- Connect plug-together wiring.
- Slide joiner/ender luminaire over aligner plate on starter luminaire and align holes.
- Secure joiner/ender luminaire to aligner plate using #8-18 x 1/4" screws.
- Secure T-Bar joiner brackets to tighten starter and joiner luminaires together.

CONTINUED



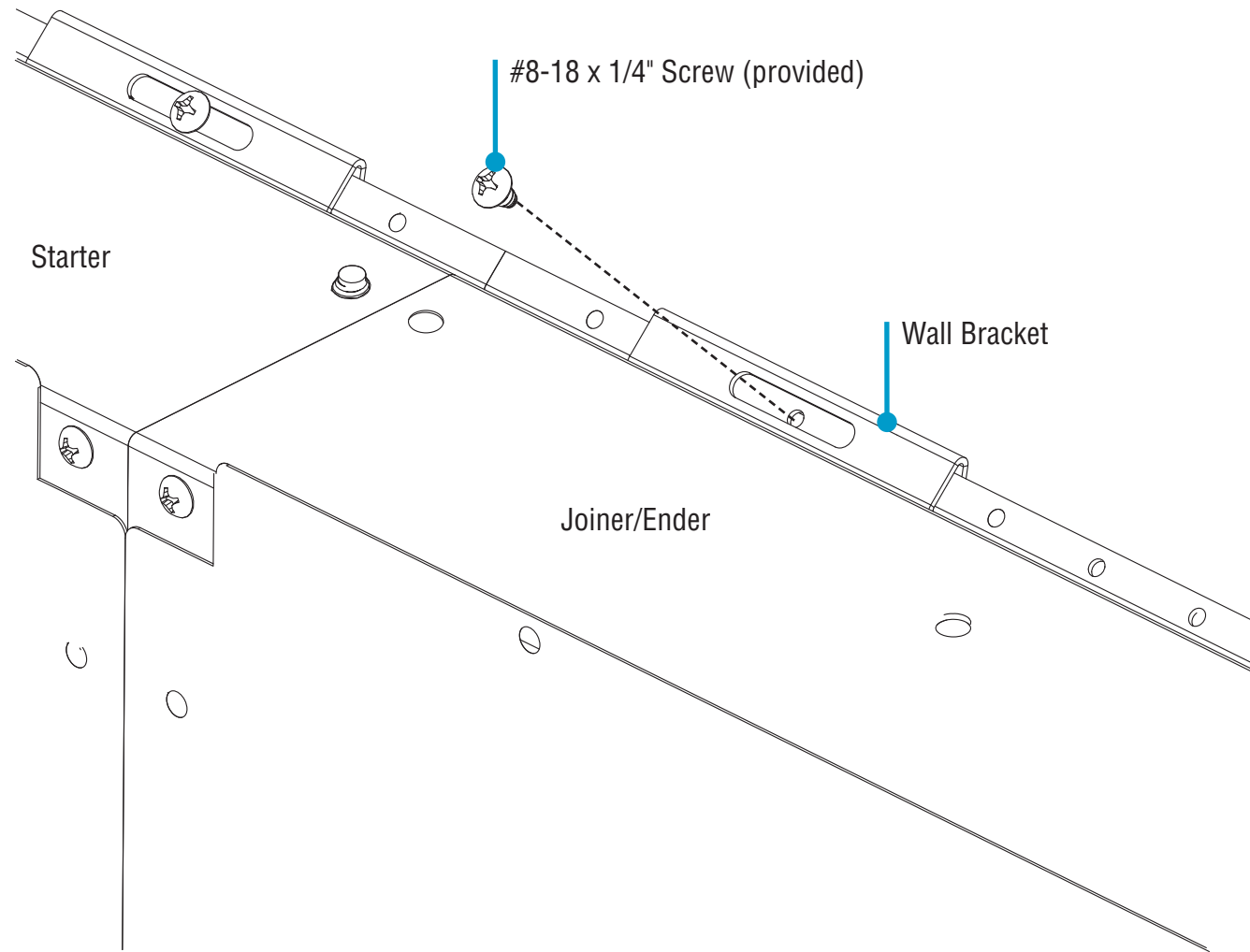
Simple Plug-Together Wiring

7 of 9


HP-WG Wall Bracket Mount T-Bar Installation Instructions

Step 5 - Joining Luminaires

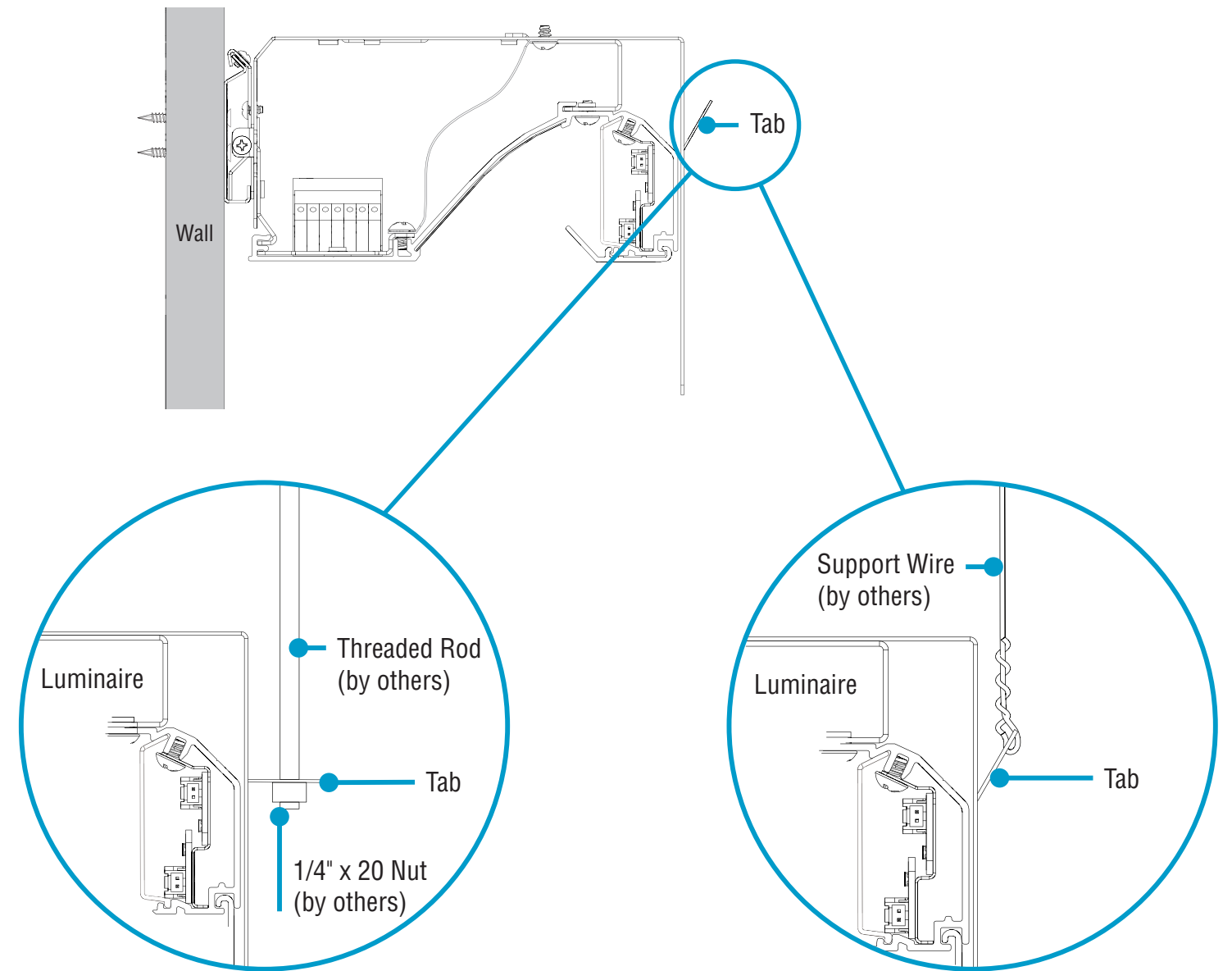
C. Secure Joiner/Ender Top View



- Secure joiner/ender luminaire to wall rail with #8-18 x 1/4" screws through wall brackets.
- Repeat this step if you have a long run with additional luminaires on the same wall.

 #8-18 x 1/4" Screw
(provided)

D. Secure to Structure Side View

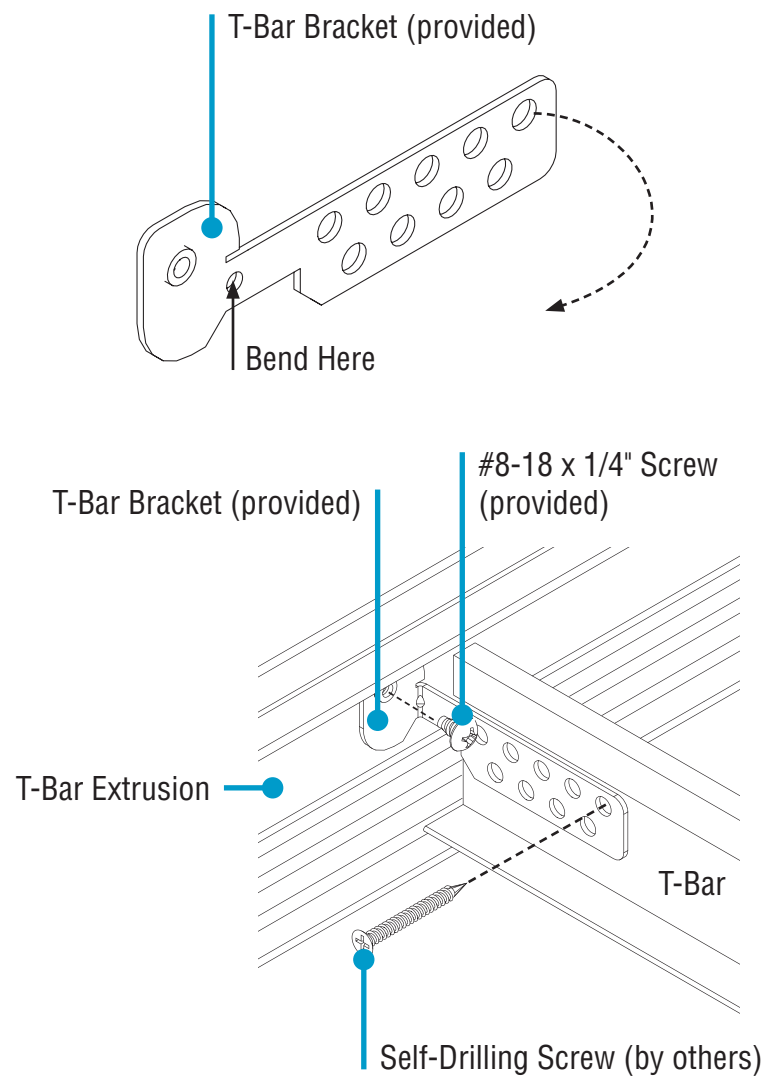


- Secure luminaires to structure by using either 1/4"-20 threaded rod or tie wire on all support tabs.

HP-WG Wall Bracket Mount T-Bar Installation Instructions

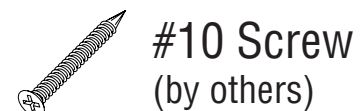
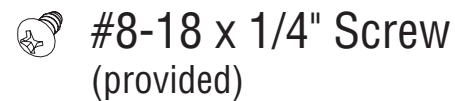
Step 6 - Closing Luminaires

A. Secure to T-Bar Side View

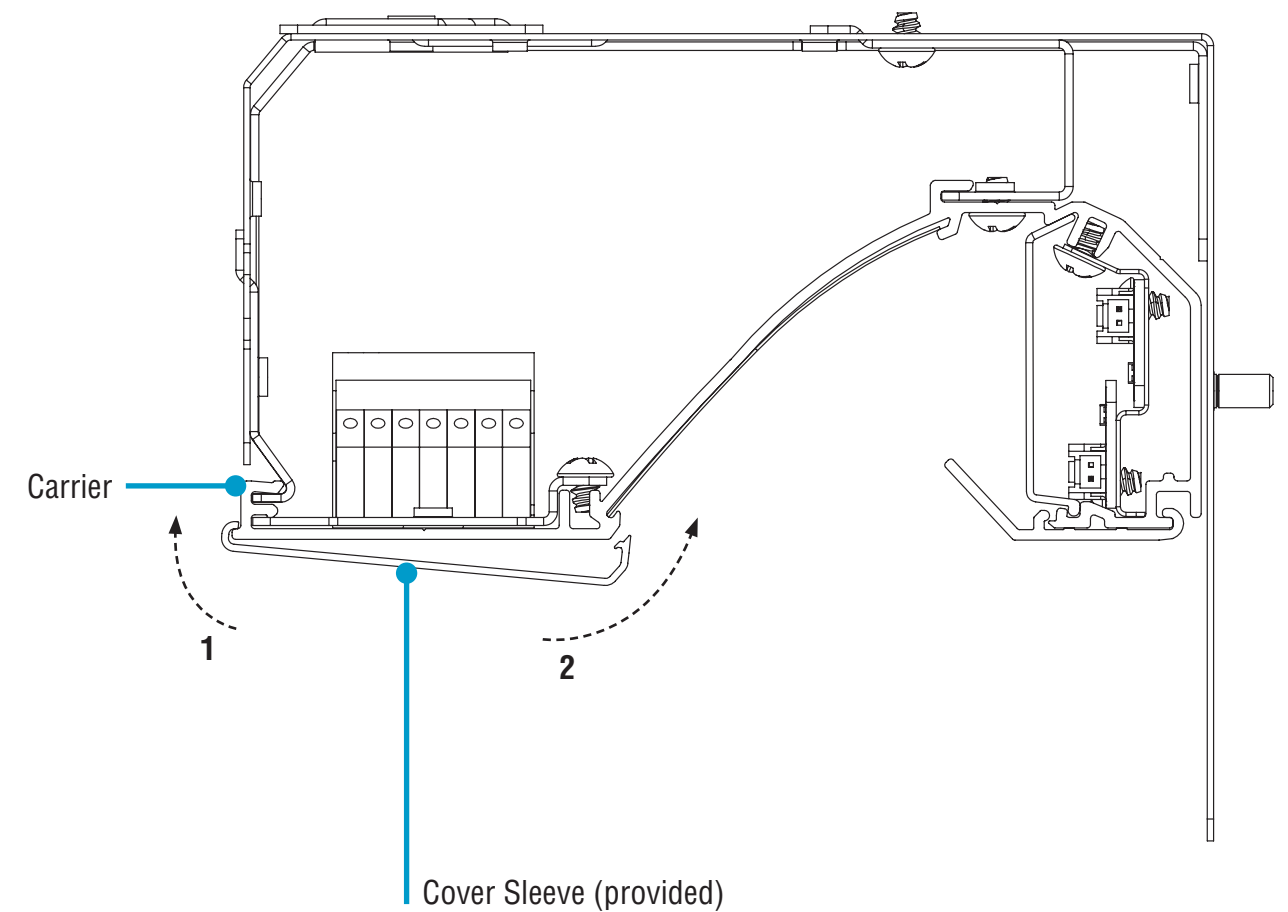


- FOR T-BAR:**
- Gently bend T-Bar bracket so it aligns with T-Bar.
 - Secure T-Bar bracket to T-Bar extrusion using #8-18 x 1/4" screw.
 - Secure T-Bar bracket to T-Bar using self-drilling screws.

- FOR WALL:**
- Secure T-Bar bracket to wall using appropriate #10 screws.



B. Final Step - Install Cover Sleeve Side View



- 1. Hook back edge of cover sleeve over edge of carrier.
- 2. Snap front edge of cover sleeve in place along the whole length of the luminaire (about every 6").
- Once cover sleeve is in place, turn power on to luminaire.

