

HPO High Performance 3.5" Round

High Performance 3.5" Round (HPO)

LED Collection

The HPO LED pendant luminaire with indirect/direct illumination is an advanced solution that delivers unprecedented performance from a micro round 3.5" diameter form factor. Featuring a 2.5" aperture, HPO provides glare free illumination from a flush or round lens. Engineered with contractors in mind, HPO is equipped with an integral driver design for reduce installation time and cost. The small form and high performance of HPO unlocks the potential for new design options.

HPO includes Knuckle options to create unique geometric shapes. April 18, 2022 available for 10-day shipping available.

Declare 2.0

This product is enrolled in the International Living Future Institute (ILFI) Declare 2.0 Program and is third-party verified.



High Performance:
total light output of

8516

Lumens per 4' section

High Efficacy: Up to

127

Lumens per watt

HPO is equipped with advanced optical options and a unique LED configuration for superior illumination

Features

Tailored Output

Optimizing lighting levels to accommodate architectural design elements and code requirements

Static and 0-10V Tunable White

- Standard (**S**)
- Boosted Standard (**B**)
- High (**H**)
- Very High (**V**)

FineTune FMX Controlled Tunable White

- Boosted Standard (**B**)
- Very High (**V**¹)

Factory Set to Your Exact Specifications

¹ Outputs are dependent on Tunable White driver selection.

Features

Tailored Color

Set white light and intensity to the preferences of the people in the space

- Static White light options at 3000, 3500K and 4000K CCT
- Tunable White options for two-source tunable white light between 2700K and 6500K CCT
- 80+ and 90+ CRI available

Features

Tailored Lengths

Enhance architectural interiors with perfectly sized luminaires

- Minimum section length is 2' and maximum is 12'
- Tailored increments of 1'

Features

Tailored Control

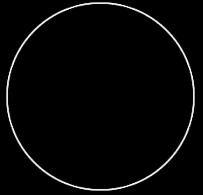
Enhance application control with integrated sensors, dimming, and tunable white offerings

- Dimming from 100% to 10% standard; 1% available
- Industry-leading, pre-qualified drivers and controls tailored to meet project needs
- Integrated networked daylight and occupancy sensor options available
- Simplified white light color tuning design and installation with the FineTune controls system

HPO Round & Flush

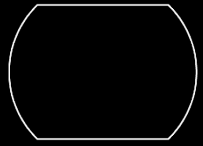
This line of light luminaire delivers excellent performance and is equipped with a unique LED configuration for superior illumination. Output can be enhanced with advanced optical options.

Standard Aesthetic Options



Round

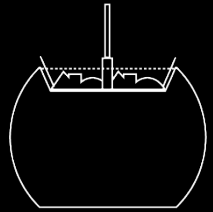
Round top and bottom diffusers



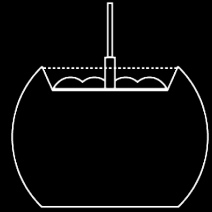
Flush

Flush top and bottom diffusers

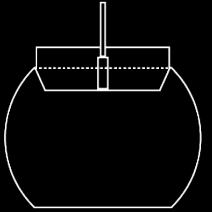
Other Optical Options



**Asymmetric
Right or Left with
Top Glow**



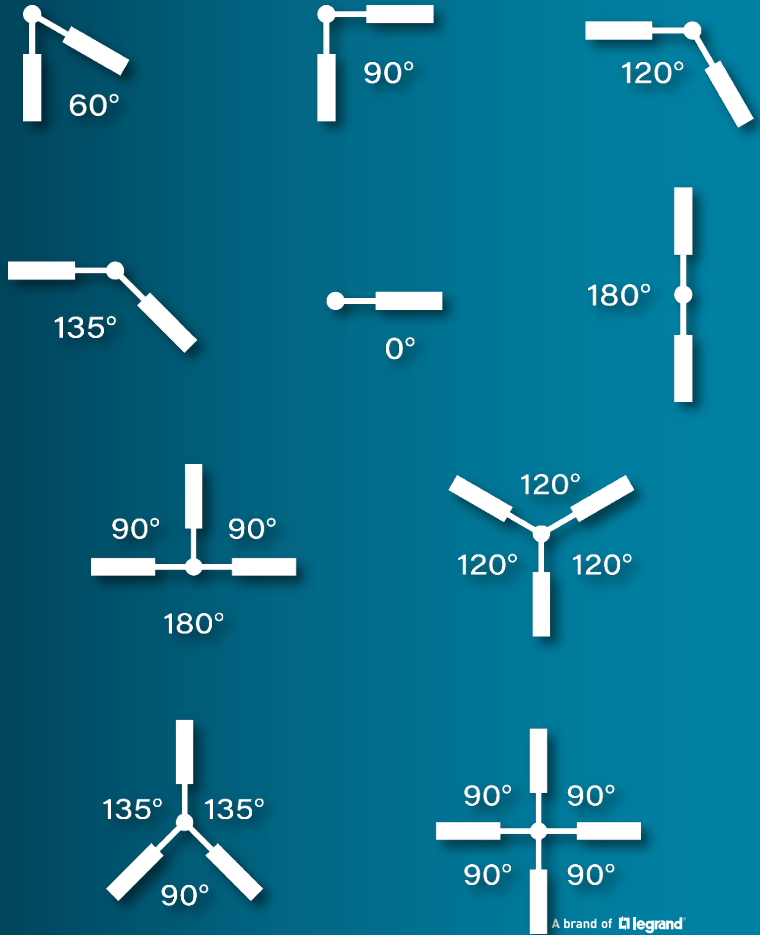
**Widespread
Optic**



Top Glow

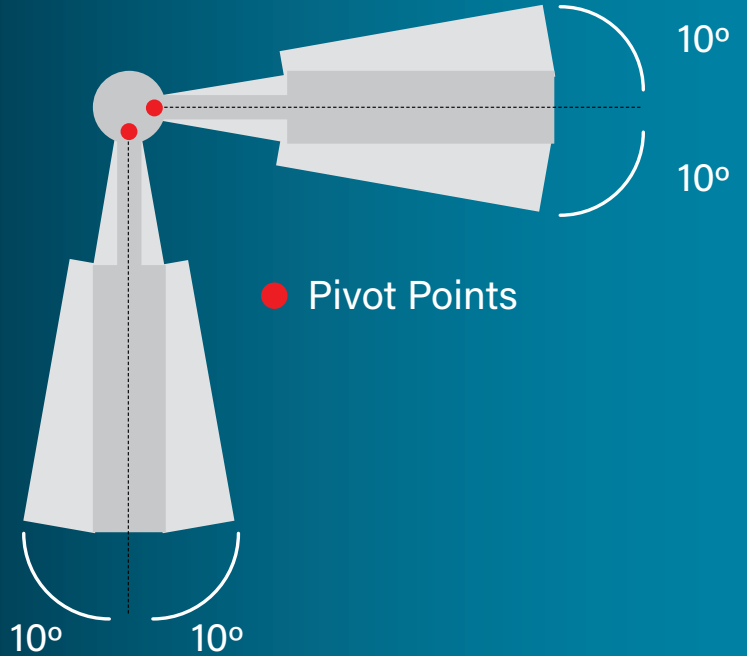
Knuckle

Knuckle for HPO expands the micro form factor Collection with the ability to connect luminaires to create unique angles and configurations.



Knuckle

Provides 10° Left and 10° Right on-site adjustability for a 20° total range of motion.

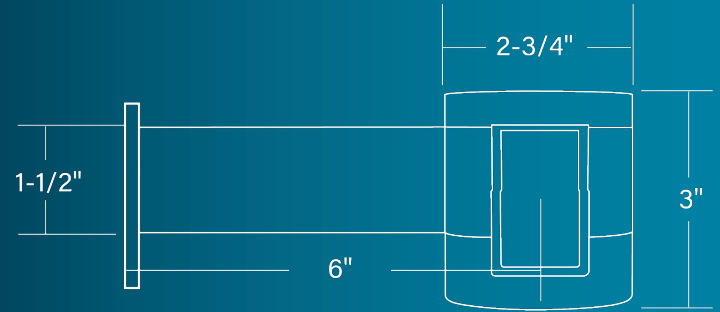
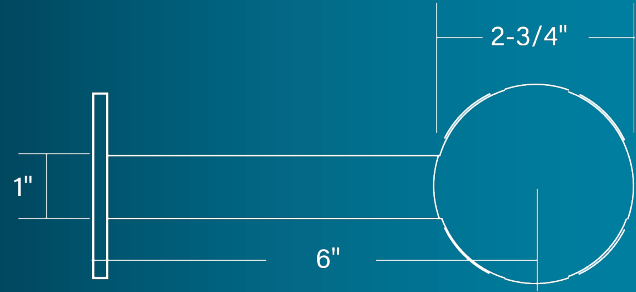


On-site Adjustability
10° Left and 10° Right

Knuckle

Add 1/4" Endcap to measurement from center of Knuckle to luminaire.

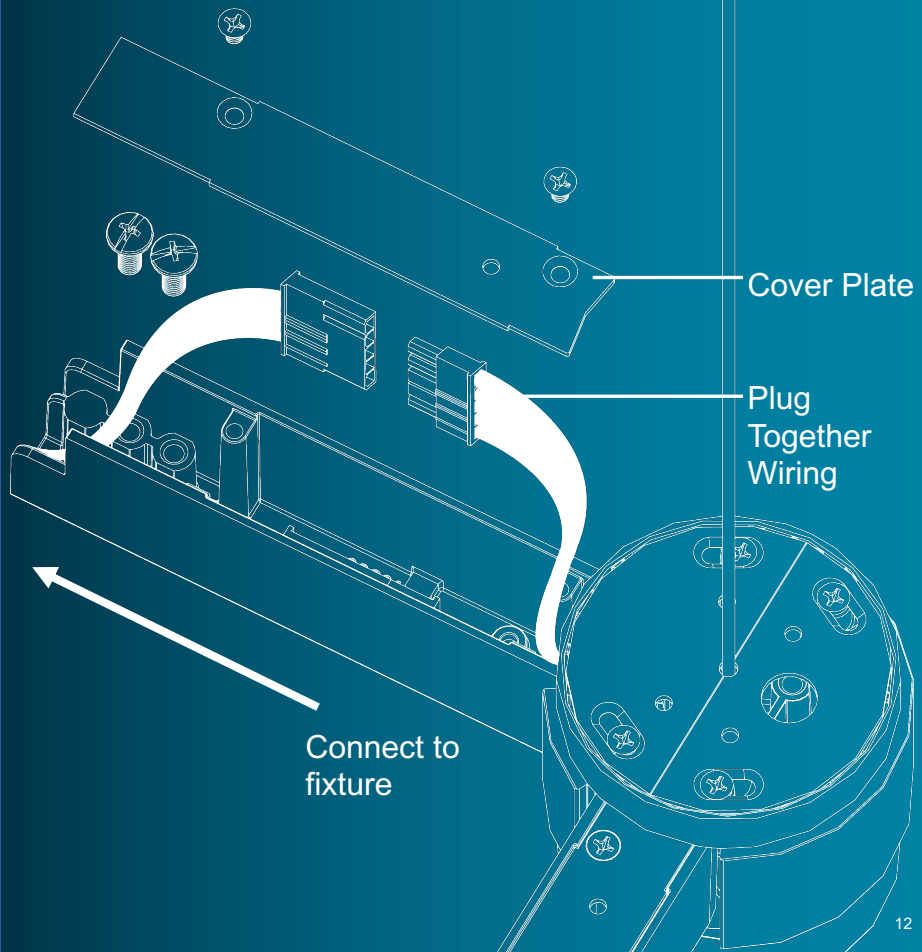
Knuckle with Endcap adds 6" per Knuckle to overall length of suspension-to-suspension spacing.



1XP Shown

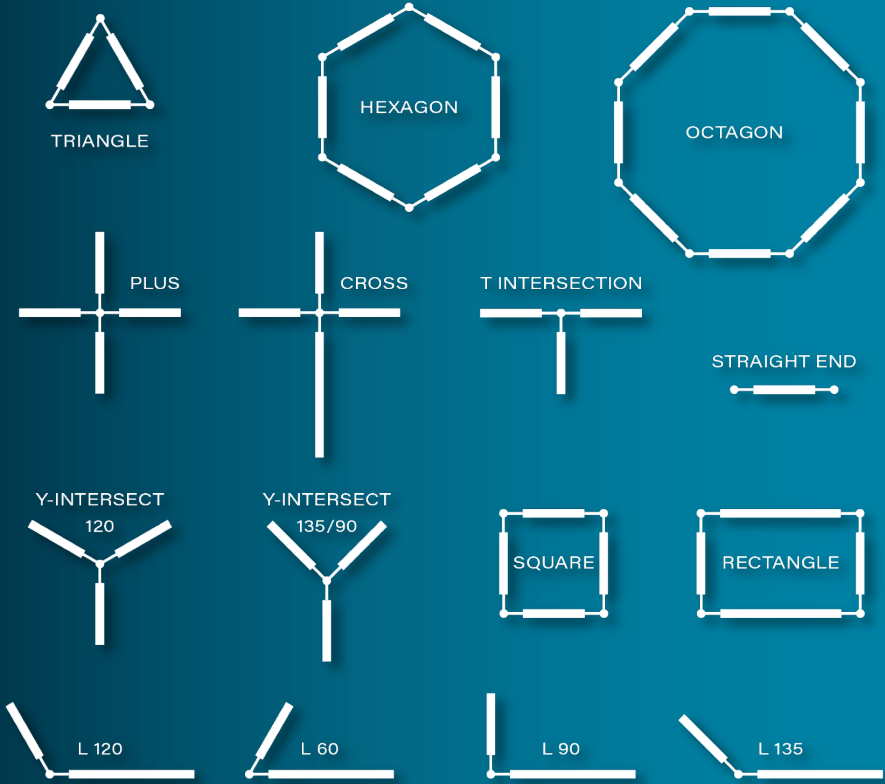
Knuckle

Ease of installation with quick installation steps



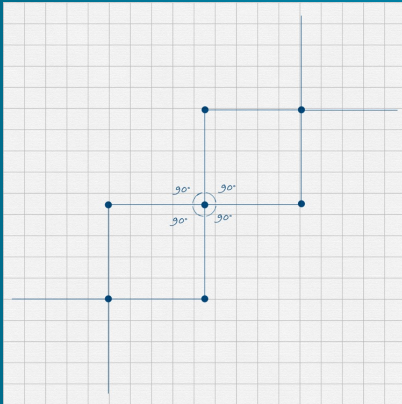
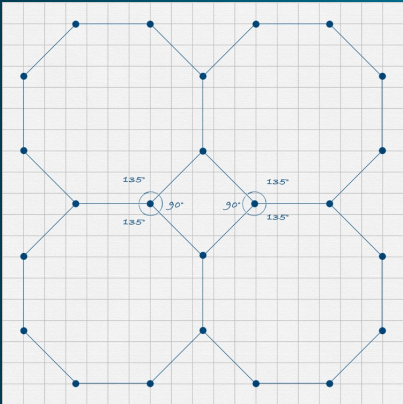
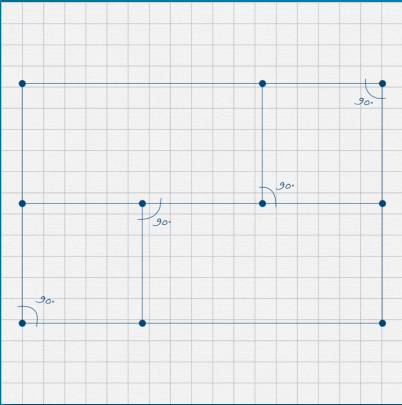
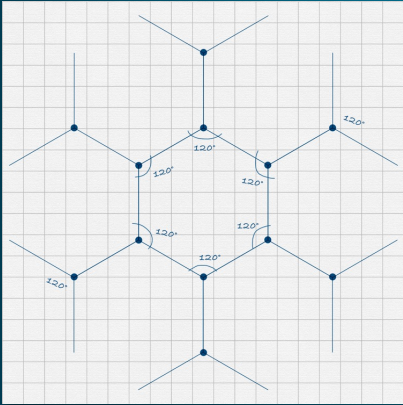
Standard Knuckle 10-Day Configurations

Available in a variety of angles and shapes including squares, rectangles, t-intersections, triangles, hexagons, octagons, and more.



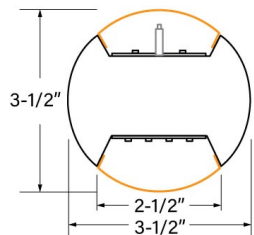
Unleash your Creativity

Create complex configurations with unique angles, allowing a four-week lead time for such projects.



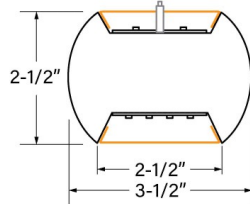
Cross Sections

**Indirect/Direct
Round**



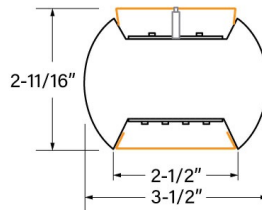
**Flush Downlight
Diffuser (standard)**

Flush



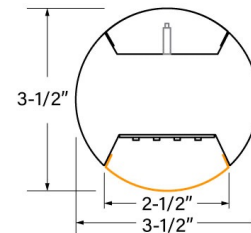
**Flush Downlight
Diffuser (standard)**

Top Glow



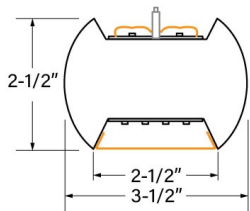
**Flush Downlight
Diffuser (standard)**

Direct



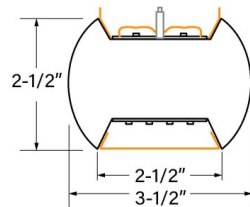
**Round Bottom
Diffuser (standard)**

Widespread Optic



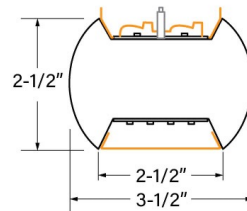
**Flush Downlight
Diffuser (standard)**

**Widespread Optic
with Top Glow**

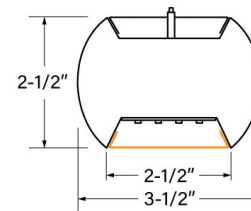


**Flush Downlight
Diffuser (standard)**

**Asymmetric Left or Right
with Top Glow**



**Flush Downlight
Diffuser (standard)**



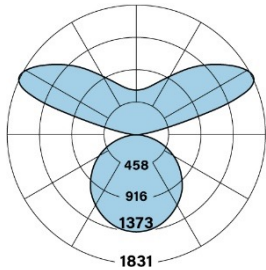
**Flush Bottom Diffuser
(standard)**

Performance

Indirect/Direct

Widespread Optic with Flush Photometry

4' Luminaire 3500K



HPO-P-ID-V-V-835-WSO-F

Uplight: Widespread Optic / Downlight: Flush

Distribution: 51% Up (V) / 49% Down (V)

Efficacy: 119 lm/W

Uplight: 4223 lumens (1055 lumens/ft)

Downlight: 4005 lumens (1001 lumens/ft)

Total luminaire output: 8228 lumen

69.0 watts

Peak Candela Value: 1820 @ 115°

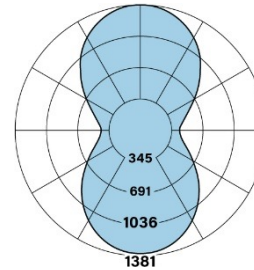
CRI: 80 / CCT: 3500K

ITL LM79 Report 92549

Indirect/Direct

Round Top with Round Bottom Photometry

4' Luminaire 3500K



HPO-P-D-V-V-835-RT-RB

Uplight: Round Top / Downlight: Round Bottom

Distribution: 51% Up (V) / 49% Down (V)

Efficacy: 123 lm/W

Uplight: 4331 lumens (1079 lumens/ft)

Downlight: 4159 lumens (1040 lumens/ft)

Total luminaire output: 8490 lumen

69.0 watts

Peak Candela Value: 1381 @ 180°

CRI: 80 / CCT: 3500K

ITL LM79 Report 93792

The Finelite LED Difference & Commitment to You



10-Year performance-based warranty



Dimming 100%-10% standard



Replaceable LEDs



Focus on sustainability