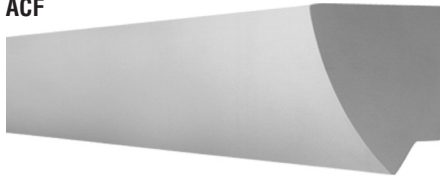




Declare.

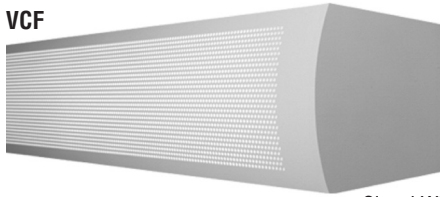


ACF



Angled Curved Fascia - Solid (SF)

VCF

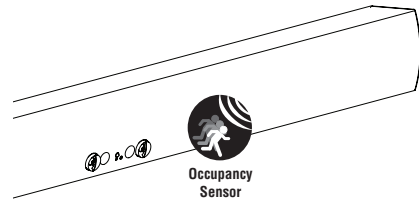


Vertical Curved Fascia - Perforated (PF)

Signal White is standard finish

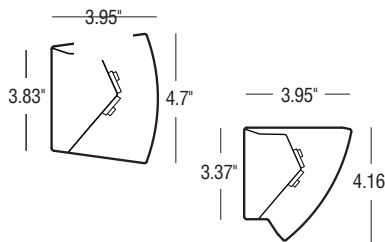
DESCRIPTION

Light up corridors, stairwells and reception areas without glare and in high style with Series 17 LED ADA Wall Mount luminaires. Choose from Angled Curved Fascia (ACF) or Vertical Curved Fascia (VCF) in solid or perforated design. Series 17 LED uses mid-powered LEDs for long life and evenly distributed illumination. This Product is enrolled in the International Living Future Institute (ILFI) Declare 2.0 Program and is third-party verified with options achieving Red List Approved and Declared status.



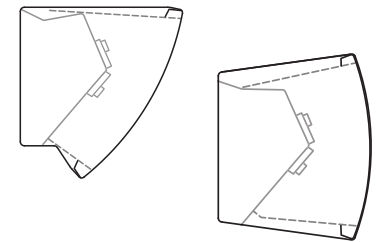
INTEGRATED SENSORS

Each unit is available with an optional integrated ultrasonic occupancy sensor.



DIMENSIONS AND LIGHT ENGINE

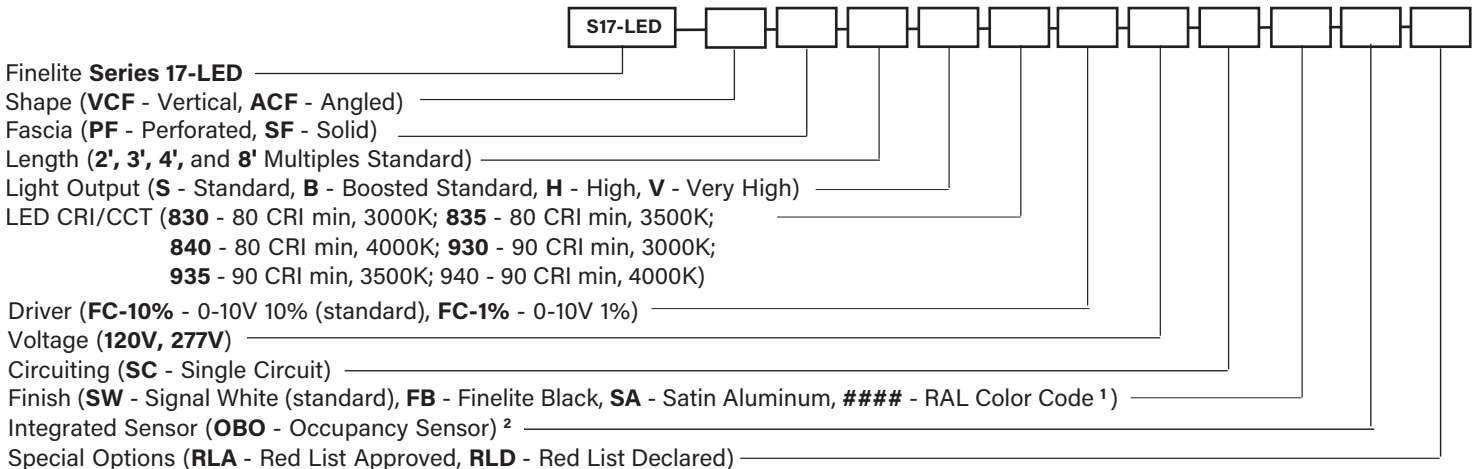
Extending less than 4" from the wall, Series 17 is ADA compliant and uses mid-powered LEDs yielding long life and even light distribution.



DIFFUSERS

Standard with frosted acrylic diffuser on the top and bottom openings.

ORDERING GUIDE - Sample Number: S17-LED - VCF - PF - 4' - S - FC-10% - 835 - 277V - SC - SW - OBO - RLA



¹ 20 business days lead time for color
² Not available on 2' luminaires.

A brand of **legrand**

ACF SF PHOTOMETRY - 4' Luminaire

S17-LED-ACF-SF

Very High Output - 120V

Efficacy (lumens per watt): 72

Total luminaire output: 2673 lumens (668 lumens/foot)

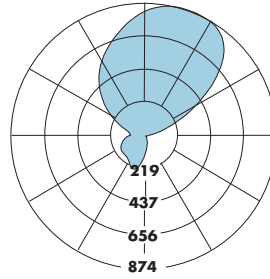
37.1 watts (9.3 watts/foot)

Peak Candela Value: 874 @ 165°

CRI: 80

CCT: 3500K

ITL LM79 Report: 85160



| CANDLEPOWER SUMMARY | | | | | | |
|---------------------|-----|------|------|------|------|------|
| | 0 | 22.5 | 45.0 | 67.5 | 90.0 | Flux |
| 0 | 107 | 107 | 107 | 107 | 107 | |
| 5 | 79 | 86 | 107 | 133 | 144 | 11 |
| 15 | 40 | 53 | 103 | 184 | 217 | 33 |
| 25 | 16 | 28 | 94 | 207 | 228 | 52 |
| 35 | 5 | 12 | 81 | 193 | 196 | 61 |
| 45 | 1 | 4 | 64 | 165 | 185 | 63 |
| 55 | 0 | 0 | 47 | 146 | 186 | 64 |
| 65 | 0 | 0 | 30 | 129 | 180 | 62 |
| 75 | 0 | 0 | 16 | 109 | 160 | 54 |
| 85 | 0 | 0 | 4 | 85 | 133 | 43 |
| 90 | 0 | 0 | 0 | 69 | 113 | |
| 95 | 5 | 9 | 25 | 69 | 102 | 47 |
| 105 | 74 | 116 | 116 | 110 | 124 | 119 |
| 115 | 238 | 289 | 240 | 209 | 205 | 238 |
| 125 | 483 | 495 | 377 | 323 | 314 | 355 |
| 135 | 721 | 669 | 516 | 439 | 425 | 421 |
| 145 | 842 | 773 | 637 | 544 | 528 | 412 |
| 155 | 871 | 828 | 730 | 640 | 617 | 339 |
| 165 | 874 | 852 | 791 | 726 | 701 | 222 |
| 175 | 850 | 842 | 819 | 796 | 787 | 78 |
| 180 | 824 | 824 | 824 | 824 | 824 | |

| Total Light Output, 3500K, 80 CRI (Lumens) - 4' Luminaire | | | |
|---|------|------|------|
| S* | B* | H* | V** |
| 1094 | 1376 | 2079 | 2673 |

| Linear Light Output, 3500K, 80 CRI (Lumens Per Foot) | | | |
|--|-----|-----|-----|
| S* | B* | H* | V** |
| 274 | 344 | 520 | 668 |

| Power, 3500K, 80 CRI (Watts Per Foot) | | | |
|---------------------------------------|-----|-----|-----|
| S* | B* | H* | V** |
| 3.6 | 4.6 | 7.1 | 9.3 |

| Efficacy, 3500K, 80 CRI (Lumens Per Watt) | | | |
|---|----|----|-----|
| S* | B* | H* | V** |
| 76 | 75 | 73 | 72 |

S - Standard Output, B - Boosted Standard Output, H - High Output, V - Very High Output

* Family Correlation based on 4' luminaire 3500K Very High Output (V) test - 120V.

** Based on ITL report: 85160

Lumen Adjustment Factors - 80 CRI

| | |
|--------------|-------|
| 3000K | 0.985 |
| 3500K | 1.000 |
| 4000K | 1.032 |

Lumen Adjustment Factors - 90 CRI

| | |
|--------------|-------|
| 3000K | 0.746 |
| 3500K | 0.760 |
| 4000K | 0.789 |

Apply a lumen adjustment factor to calculate lumens for the desired CCT and CRI.

SAMPLE LUMEN ADJUSTMENT CALCULATION

High Output (H), 4000K, 90 CRI

Lumen Adjustment Factor = 0.789

$$\text{Total Light Output} = 2079 \text{ lm} \times 0.789 = 1640 \text{ lm}$$

$$\text{Total Light Output per Foot} = 520 \text{ lm/ft} \times 0.789 = 410 \text{ lm/ft}$$

$$\text{watts/foot} = 7.1 \text{ W/ft}$$

$$\text{Efficacy} = \frac{410 \frac{\text{lm}}{\text{ft}}}{7.1 \frac{\text{W}}{\text{ft}}} = 58 \text{ lm/W}$$

VCF PHOTOMETRY - 4' Luminaire

S17-LED-VCF-SF

Very High Output - 120V

Efficacy (lumens per watt): 88

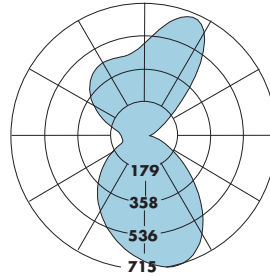
Total luminaire output: 3222 lumens (806 lumens/foot)

36.8 watts (9.2 watts/foot)

Peak Candela Value: 708 @ 15°

CCT: 3500K

ITL LM79 Report: 85158



| CANDLEPOWER SUMMARY | | | | | | |
|---------------------|-----|------|------|------|------|------|
| | 0 | 22.5 | 45.0 | 67.5 | 90.0 | Flux |
| 0 | 687 | 687 | 687 | 687 | 687 | |
| 5 | 706 | 700 | 684 | 668 | 663 | 65 |
| 15 | 708 | 696 | 656 | 618 | 607 | 185 |
| 25 | 637 | 639 | 597 | 552 | 545 | 273 |
| 35 | 495 | 524 | 509 | 473 | 473 | 310 |
| 45 | 323 | 379 | 400 | 388 | 396 | 293 |
| 55 | 175 | 235 | 287 | 299 | 314 | 238 |
| 65 | 73 | 117 | 183 | 212 | 231 | 165 |
| 75 | 12 | 35 | 96 | 133 | 156 | 93 |
| 85 | 0 | 0 | 26 | 97 | 150 | 55 |
| 90 | 0 | 0 | 0 | 100 | 154 | |
| 95 | 0 | 0 | 18 | 110 | 163 | 59 |
| 105 | 0 | 2 | 79 | 181 | 227 | 100 |
| 115 | 8 | 36 | 163 | 264 | 313 | 159 |
| 125 | 55 | 156 | 258 | 337 | 392 | 221 |
| 135 | 196 | 361 | 350 | 391 | 444 | 274 |
| 145 | 478 | 550 | 425 | 419 | 466 | 290 |
| 155 | 660 | 631 | 478 | 432 | 458 | 241 |
| 165 | 660 | 617 | 510 | 453 | 450 | 151 |
| 175 | 572 | 556 | 522 | 495 | 487 | 50 |
| 180 | 524 | 524 | 524 | 524 | 524 | |

| Total Light Output, 3500K, 80 CRI (Lumens) - 4' Luminaire | | | |
|---|------|------|------|
| S* | B* | H* | V** |
| 1319 | 1658 | 2506 | 3222 |

| Linear Light Output, 3500K, 80 CRI (Lumens Per Foot) | | | |
|--|-----|-----|-----|
| S* | B* | H* | V** |
| 330 | 415 | 627 | 806 |

| Power, 3500K, 80 CRI (Watts Per Foot) | | | |
|---------------------------------------|-----|-----|-----|
| S* | B* | H* | V** |
| 3.6 | 4.6 | 7.0 | 9.2 |

| Efficacy, 3500K, 80 CRI (Lumens Per Watt) | | | |
|---|----|----|-----|
| S* | B* | H* | V** |
| 92 | 90 | 90 | 88 |

S - Standard Output, B - Boosted Standard Output, H - High Output, V - Very High Output

* Family Correlation based on 4' luminaire 3500K Very High Output (V) test - 120V.

** Based on ITL report: 85158

| Lumen Adjustment Factors - 80 CRI | |
|-----------------------------------|-------|
| 3000K | 0.985 |
| 3500K | 1.000 |
| 4000K | 1.032 |

| Lumen Adjustment Factors - 90 CRI | |
|-----------------------------------|-------|
| 3000K | 0.746 |
| 3500K | 0.760 |
| 4000K | 0.789 |

Apply a lumen adjustment factor to calculate lumens for the desired CCT and CRI.

SAMPLE LUMEN ADJUSTMENT CALCULATION

High Output (H), 4000K, 90 CRI

Lumen Adjustment Factor = 0.789

$$\text{Total Light Output} = 2506 \text{ lm} \times 0.789 = 1977 \text{ lm}$$

$$\text{Total Light Output per Foot} = 627 \text{ lm/ft} \times 0.789 = 495 \text{ lm/ft}$$

$$\text{watts/foot} = 7.0 \text{ W/ft}$$

$$\text{Efficacy} = \frac{495 \frac{\text{lm}}{\text{ft}}}{7.0 \frac{\text{W}}{\text{ft}}} = 71 \text{ lm/W}$$

SPECIFICATIONS

CONSTRUCTION: Fixture channel is 6063-T6 extruded aluminum. Fascia covers are die-formed 20-gauge steel. Mounting clips are constructed from 22-gauge die-formed steel. All components are hard-tooled to tolerances of +/- 0.010".

ENDCAPS: Flat endcap, 14-gauge die-formed steel, adds 0.1" to each end.

REFLECTORS: 96W standard reflector, die-formed painted steel, 96% reflectance white finish. Virgin acrylic UV stabilized lensed diffuser behind perforated fascia is standard.

DIFFUSERS: Standard with top 0.080" and bottom 0.060" frosted acrylic diffusers


LIGHT OUTPUT: Four lumen packages available, Standard (S), Boosted Standard (B), High (H), and Very High (V). A separate chart summarizes lumen distribution and wattage. Light engines are replaceable.

LUMEN MAINTENANCE: 90% of initial light output (L90) at 100,000+ hours; 70% of initial light output (L70) at 200,000+ hours.

DRIVER: Replaceable 120V/277V Constant Current Reduction dimming driver standard. Can be wired dimming or non-dimming. 0-10V dimming controls with a range of 10%- 100%. Dimming to 1% available; consult factory. Driver is fully accessible from below the ceiling. Power Factor: ≥ 0.90 . Total Harmonic Distortion (THD) <20%. Step-dimming driver (limited programable outputs. Contact Factory). Expected driver lifetime: 100,000 hours.

LUTRON DRIVER OPTIONS: **LUTES1** (Hi-lume 1% EcoSystem with Soft-On, Fade to Black dimming (LDE1 series)); **LUTES5** (5-Series 5% EcoSystem (LDE5 Series)); Contact factory for availability of discontinued Lutron drivers, L3DA-3-wire and L3DA EcoSystem.

ELECTRICAL: Optional emergency to generator/inverter wiring, internal generator transfer switch, nightlight wiring, backup battery. Factory-choice, low-profile, battery backup delivers 1337 lumens (ACF) or 1611 (VCF) for Solid Fascia (SF) and 1653 lumens (ACF) or 1798 (VCF) for Perforated Fascia (PF). Minimum luminaire length for battery pack: 8'. The downlight always will be illuminated in the 4' section.

 **INTEGRATED SENSORS:** Available with integrated ultrasonic occupancy sensors. Not available on 2' luminaires.

MOUNTING: Standard with mounting clips to the wall and not visible from normal viewing angles once installed. One mounting clip is provided for every 16 inches of luminaire for a secure connection to the wall. Luminaire is snapped into place on the mounting clips and secured using locking screws.

FEED: Standard with one 18-gauge/5-conductor single-circuit feed. 14-gauge feed used when fixture current exceeds 5 amps. Optional 6' flex conduit whips available.

FINISHES: Finelite Signal White is standard. Optional adders: 179 finishes available from Tiger Drylac's RAL color chart.

LENGTHS: Modular section lengths of 2', 3', 4' and 8' section lengths can be combined to make longer runs.

LABELS: Fixture and electrical components are ETL-listed conforming to UL 1598 in the U.S.A. and CAN/CSA C22.2 No. 250.0 in Canada. In accordance with NEC Code 410.130 (G), this luminaire contains an internal driver disconnect. Damp Location. Finelite products use electronic components that are RoHS compliant, and the mechanical components of the luminaire have been verified to not knowingly contain any restricted substances listed per RoHS Directive (EU) 2015/863. Finelite makes the specification process easy when putting healthier products on your projects. Simply add – **RLA** (Red List Approved) or – **RLD** (Red List Declared) to your part number.

WEIGHT: Fixture weight = 2 lb/ft.

WARRANTY: 10-year performance-based warranty on all standard components. Optional accessories such as emergency battery packs are covered by their individual manufacturer warranties.