

HP-WS Perimeter Slot Post-Ceiling Spackle Flange Installation Instructions

Overview

NOTES

- All power connections should be installed according to local/national codes by a Certified Electrician.
- This installation requires **proper support** as each luminaire is being installed.
- **DO NOT attempt to join luminaires together on the floor.** Damage may result when lifted.



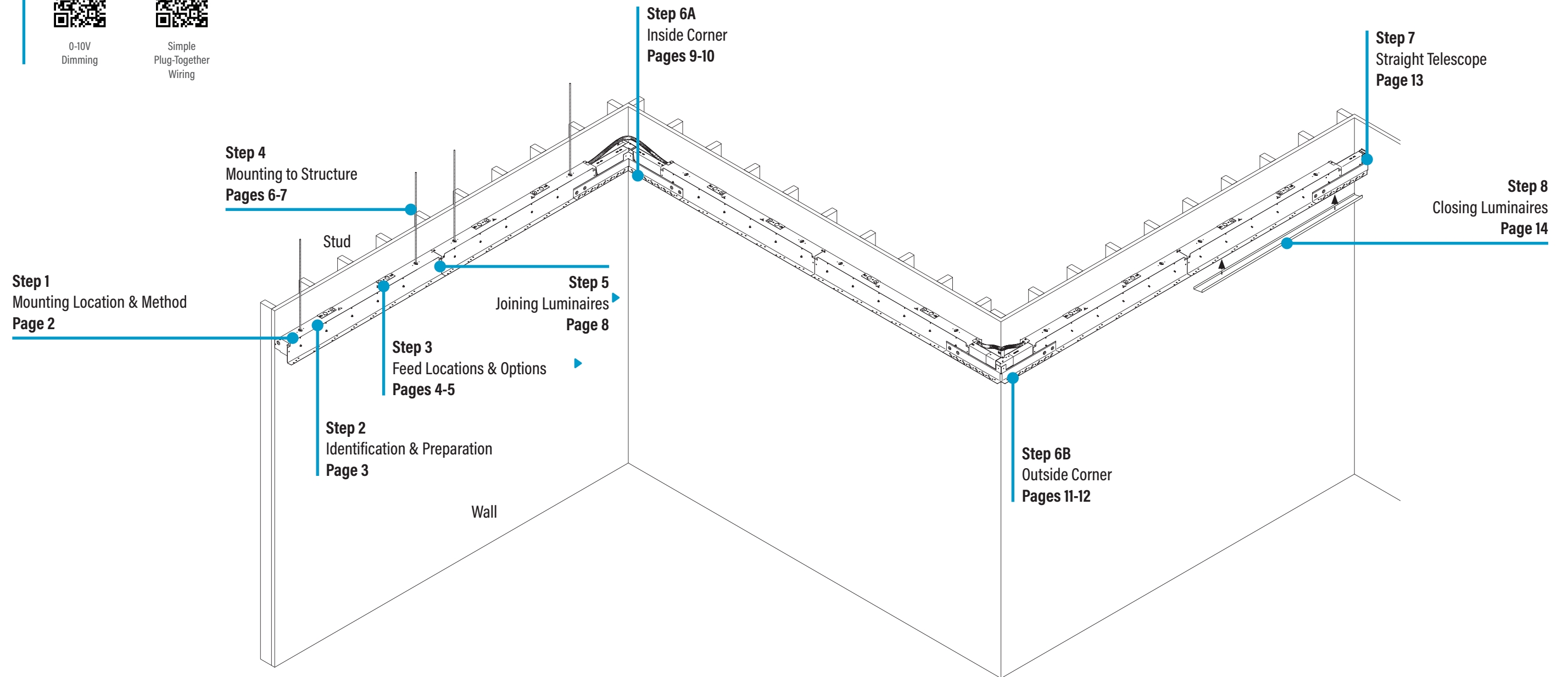
HELPFUL
VIDEOS



0-10V
Dimming



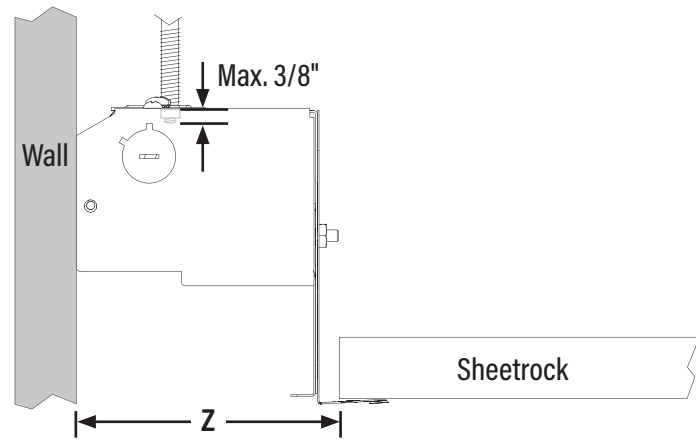
Simple
Plug-Together
Wiring



HP-WS Perimeter Slot Post-Ceiling Spackle Flange Installation Instructions

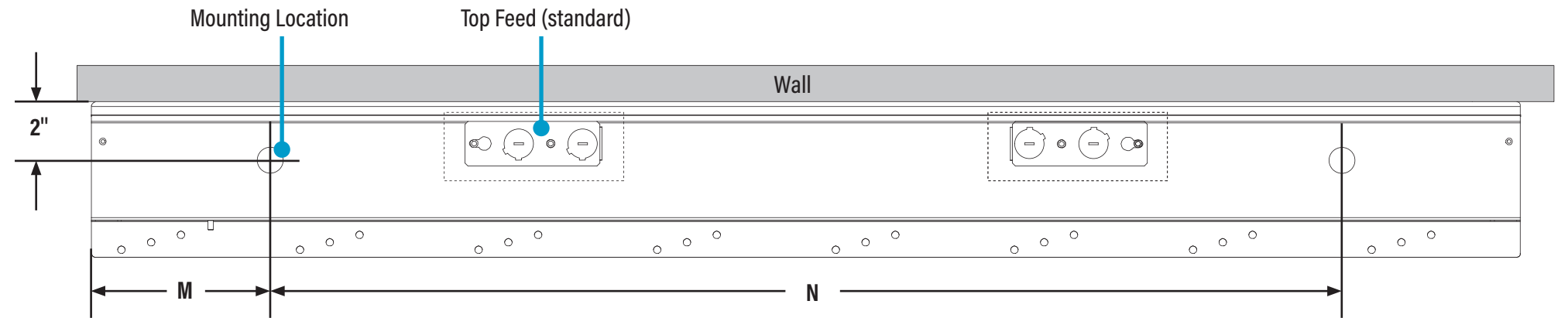
Step 1 - Mounting Location & Method

A. Create Rough In Side View



Luminaire Depth	Rough In Opening	
	4" Width	6" Width
2", 4" & 6"	Z = 4-1/2"	Z = 6-1/2"

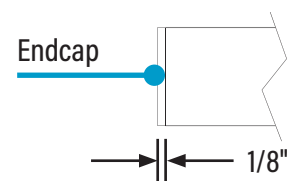
B. 1/4"-20 Threaded Rod Locations Top View



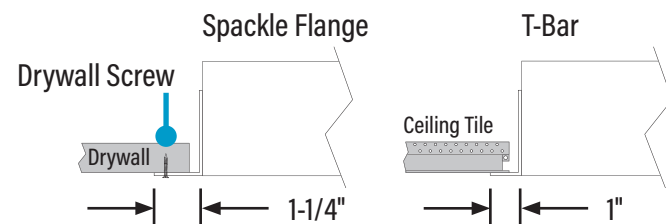
Luminaire Length	M (in)	N (in)
2'	3	18
3'	3	30
4'	6	36
8'	6	84

Endcap Information (Side Views):

The **Wall-to-Wall Endcap** adds 1/8" per endcap.



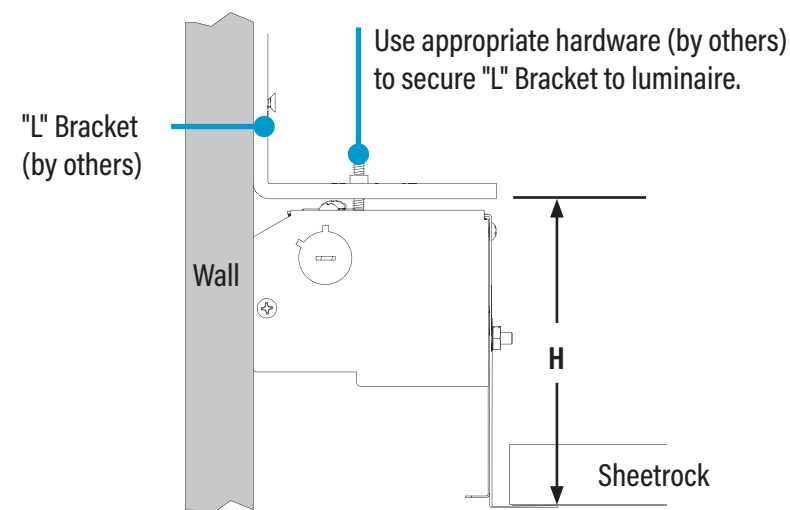
The **Pocket Slot Endcap** adds 1-1/4" for Spackle Flange and 1" for T-Bar per endcap.



The **Telescoping Endcap** adds:

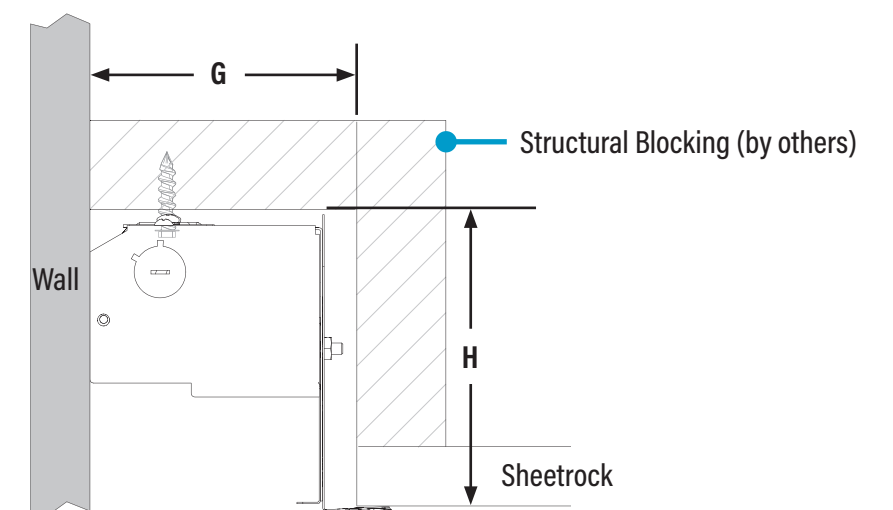
- A minimum of 2" to a 2' section
- A minimum of 1" to a 3' section
- A minimum of 1" to 4' and 8' sections

Alternative "L" Bracket Mounting (by others)



Luminaire Depth	4" W (in)	6" W (in)
2"	H = 5-1/8"	H = 5-1/8"
4"	H = 7-1/8"	H = 7-1/8"
6"	H = 9-1/8"	H = 9-1/8"

Alternative Mount to Structure (by others)



Luminaire Depth	4" W (in)	6" W (in)
2"	G = 4-5/8 H = 5-1/8"	G = 6-5/8 H = 5-1/8"
4"	G = 4-5/8 H = 7-1/8"	G = 6-5/8 H = 7-1/8"
6"	G = 4-5/8 H = 9-1/8"	G = 6-5/8 H = 9-1/8"

HP-WS Perimeter Slot Post-Ceiling Spackle Flange Installation Instructions

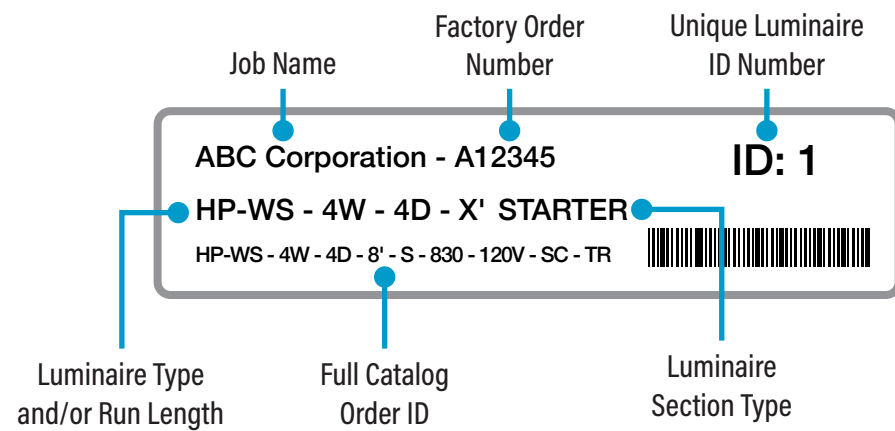
Step 2 - Identification & Preparation

A. Identify Luminaires

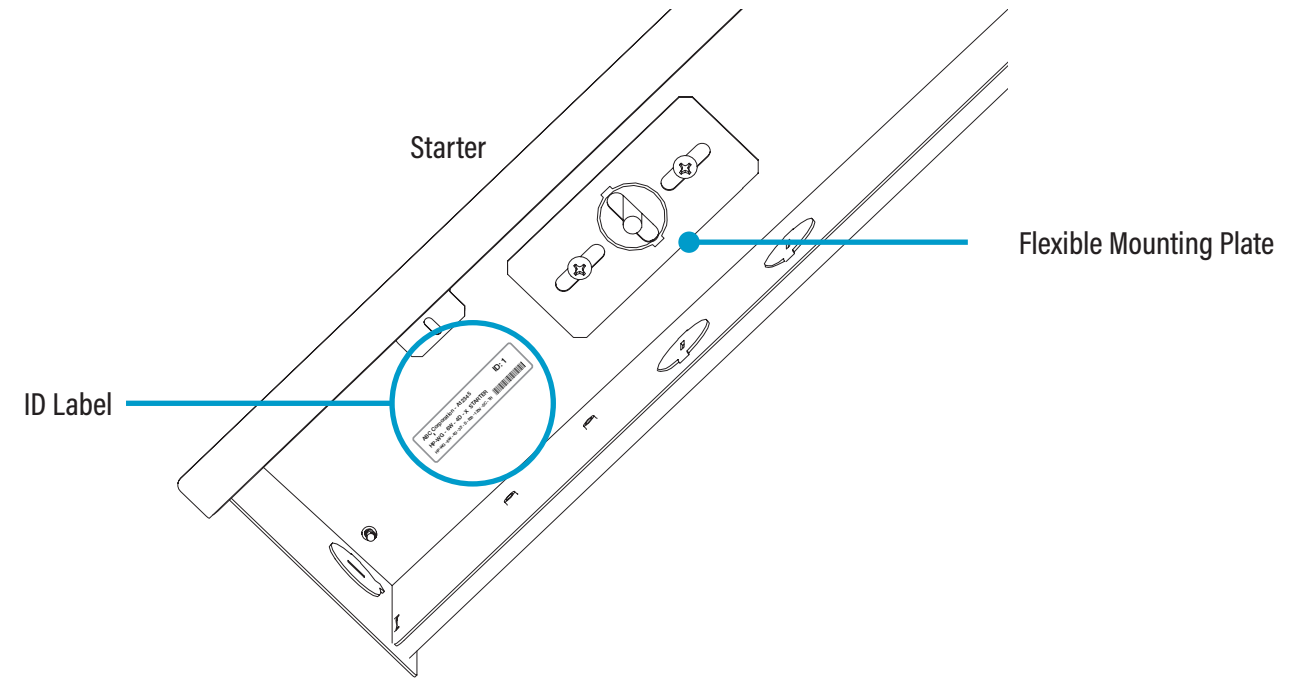


CAUTION

Arrange luminaires in order according to ID# at their install locations.



Bottom-Up View



- Identify all luminaires by their ID label that can be found on the box and inside the luminaire.
- NOTE:** Exact location of labels in these areas may vary.
- Remove all luminaires from their box.
- Refer to Record Drawings that can be found in the hardware kit.

Kitted Hardware

- Finelite has provided items listed here, with their Finelite part numbers. These items can be found in separate boxes shipped with the luminaire.
- Account for all parts and set aside until they are needed.
- All other hardware needed for this installation will be by others.



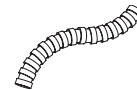
#8-18 x 1/4" Screw
Part# 69026
Feed Locations & Options
p. 4, Step 3
Joining Luminaires
p. 8, Step 5
Inside Corner
p. 9-10, Step 6A
Outside Corner
p. 11-12, Step 6B



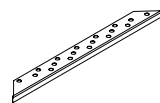
#10-32 Screw
Part# 94144
Feed Locations & Options
p. 4, Step 3



#4-24 x 1/4" Self-Drilling Screws
Part# 94416
Mounting Starter to Structure
p. 6, Step 4
Closing Luminaires
p. 14, Step 8



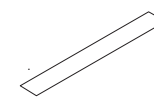
Flex Conduit
Part# 96627
Inside Corner
p. 9, Step 6A
Outside Corner
p. 11, Step 6B



Raised Bead
Part# 11635
Straight Telescope
p. 14, Step 7



Wall Trim Gaskets
Part# 11987
Inside Corner
p. 10, Step 6A
Outside Corner
p. 12, Step 6B

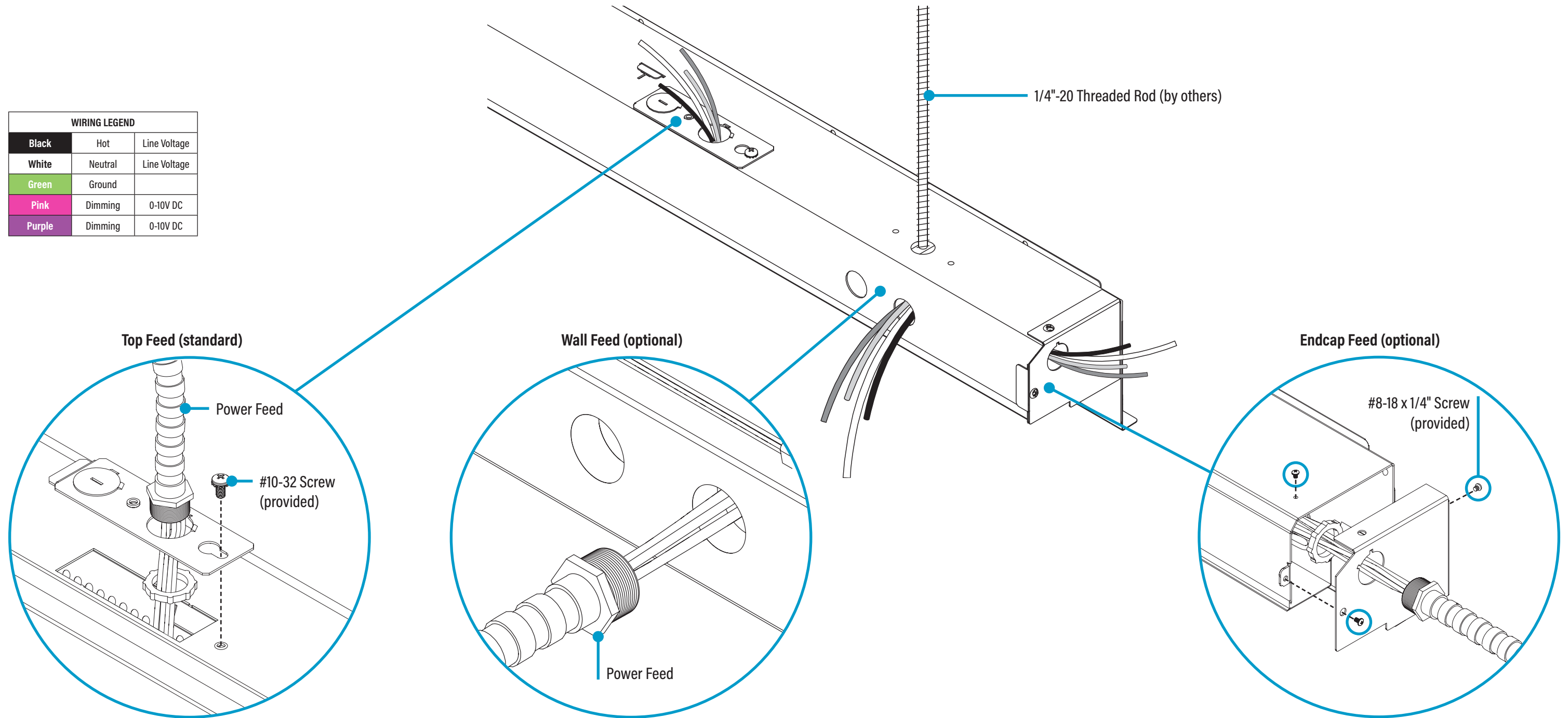



Mud Guard
Part# 64542
Closing Luminaires
p. 14, Step 8


HP-WS Perimeter Slot Post-Ceiling Spackle Flange Installation Instructions

Step 3 - Feed Locations & Options

WIRING LEGEND		
Black	Hot	Line Voltage
White	Neutral	Line Voltage
Green	Ground	
Pink	Dimming	0-10V DC
Purple	Dimming	0-10V DC



 #8-18 x 1/4" Screw (provided)

 #10-32 Screw (provided)

CONTINUED



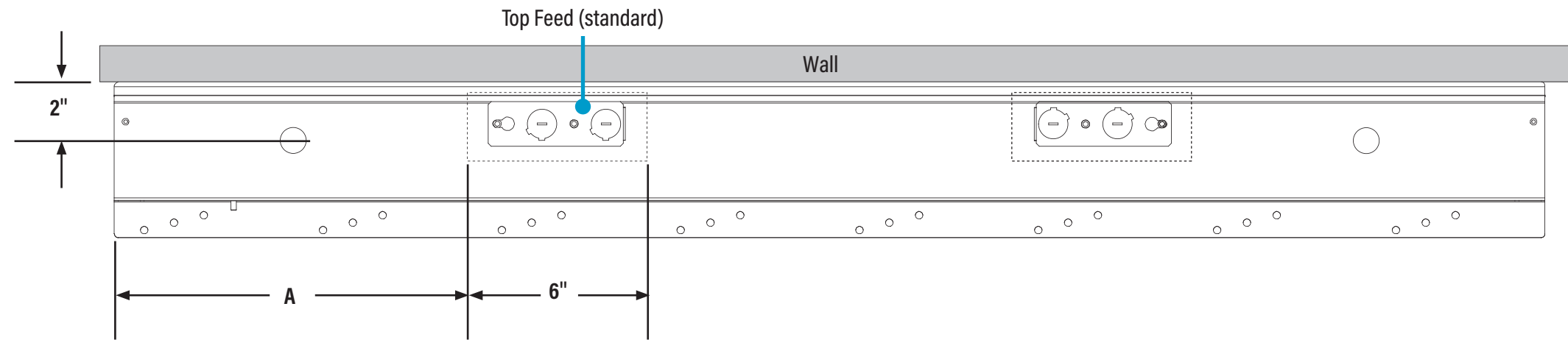
0-10V Dimming

HP-WS Perimeter Slot Post-Ceiling Spackle Flange Installation Instructions

Step 3 - Feed Locations & Options

Top Feed Top View

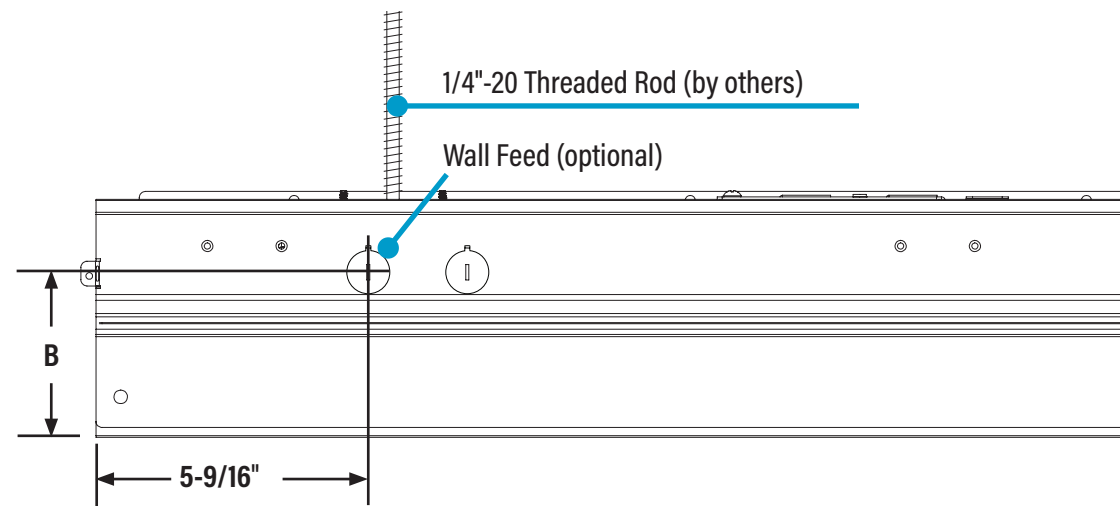
Luminaire Length	A (in)
2'	5
3'	5
4'	12
8'	12



Top Feed Location (standard)

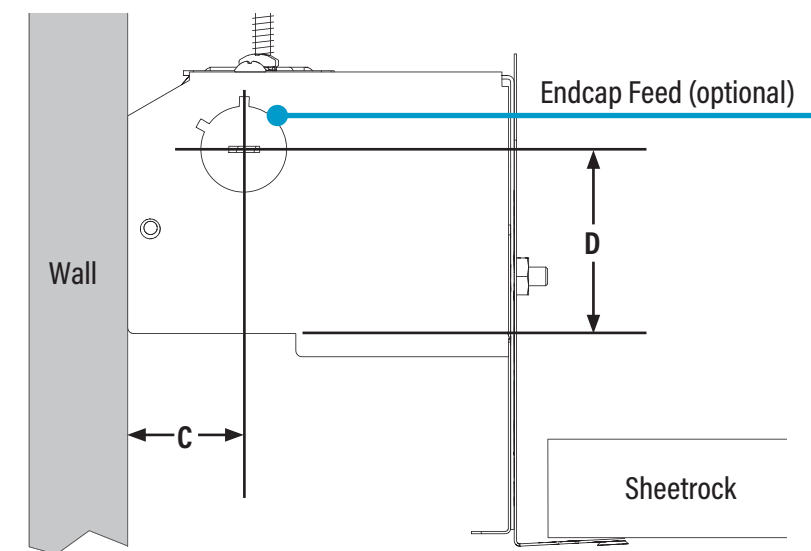
• Use chart above to find measurement of A for feed location

Wall Feed Back View



Luminaire Depth	B (in)
2"	3-5/16
4"	5-5/16
6"	7-5/16

Endcap Feed Side View

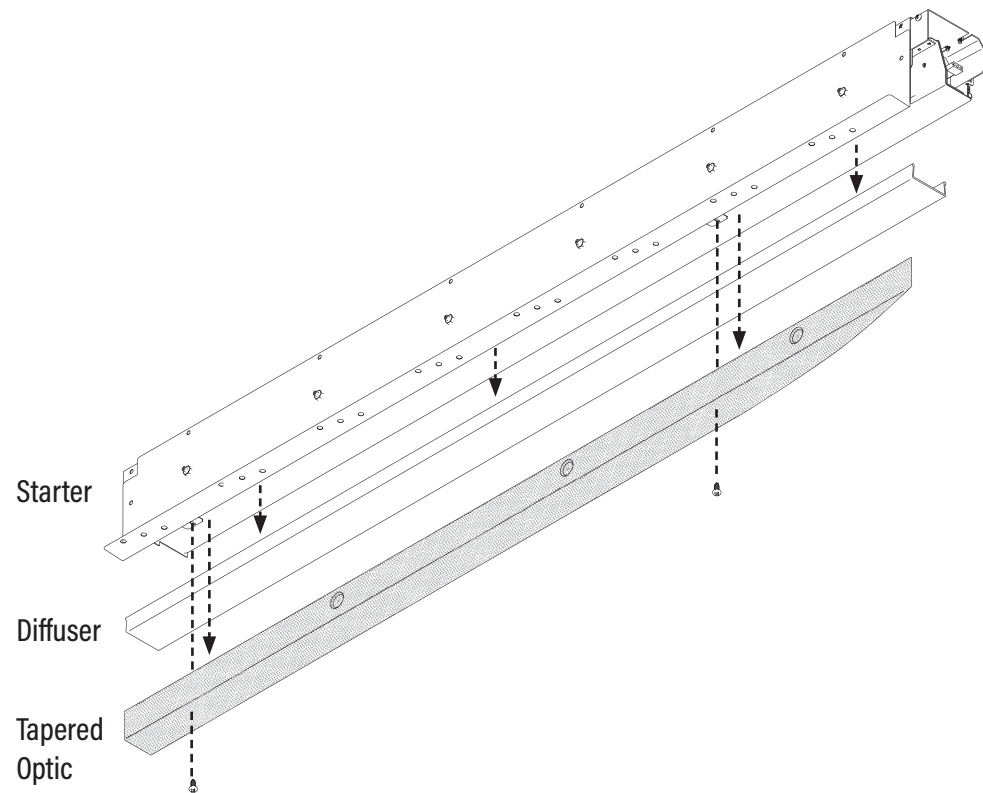


Luminaire Width	C (in)	D (in)
4"	1-3/16	1-7/8
6"	2	1-7/8

HP-WS Perimeter Slot Post-Ceiling Spackle Flange Installation Instructions

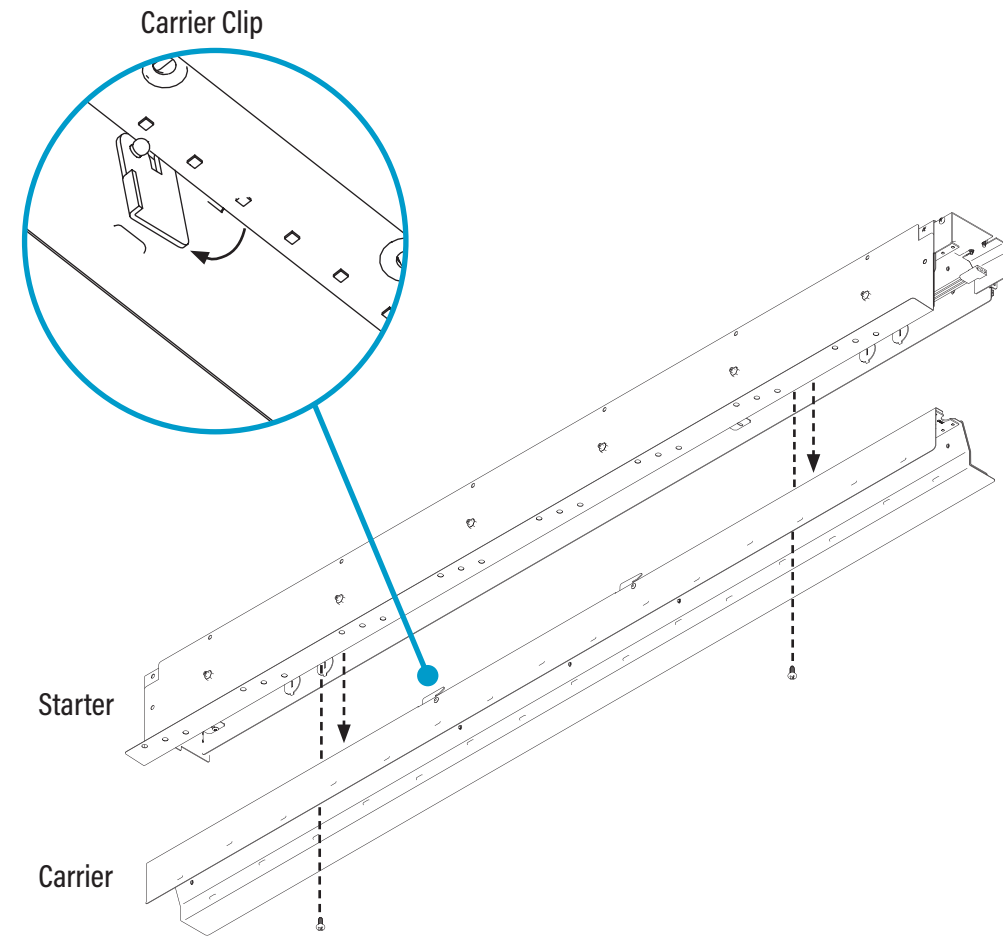
Step 4 - Mounting Starter to Structure

A. Remove Tapered Optic & Diffuser Bottom-Up View





- Make electrical connections according to feed location and options.
- If using tapered optics, remove the #4-24 x 1/4" screws and set aside.
- Remove diffusers and set aside to prevent them from getting dirty or damaged.

B. Remove Carrier Bottom-Up View



- Remove the #8-18 x 1/2" screws.
- Twist the carrier clips clockwise to release the carrier.
- The carrier will be suspended by safety cables but you can remove them for completely open access.

 #4-24 x 1/4" Self Drilling Screws (provided)  #8-18 x 1/2" Screw(s) (provided)

CONTINUED

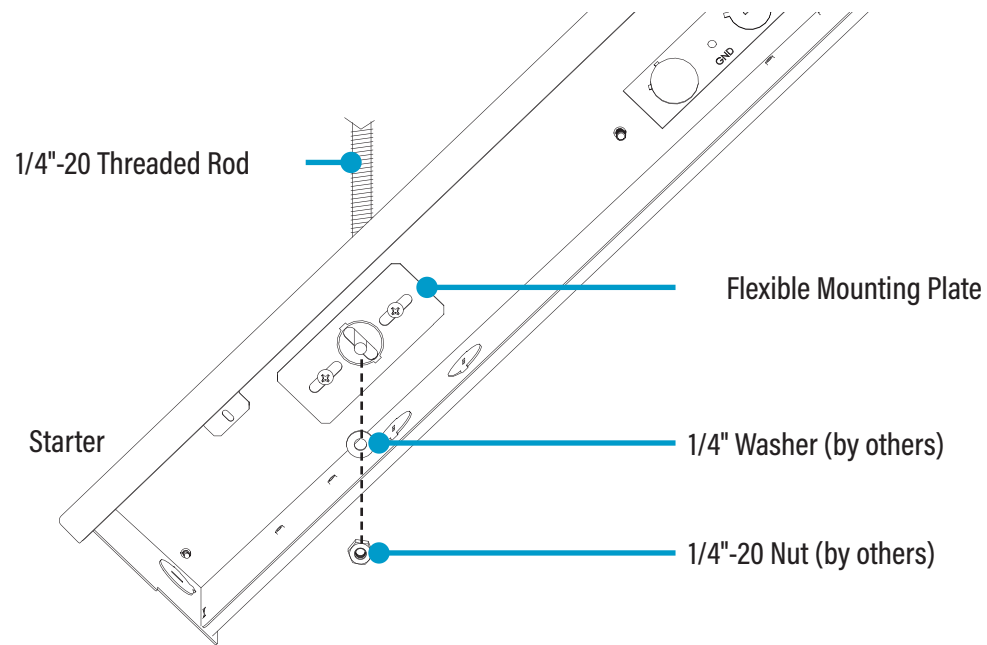
HP-WS Perimeter Slot Post-Ceiling Spackle Flange Installation Instructions

Step 4 - Mounting Starter to Structure

C. Mount Luminaire

Standard

Bottom-Up View

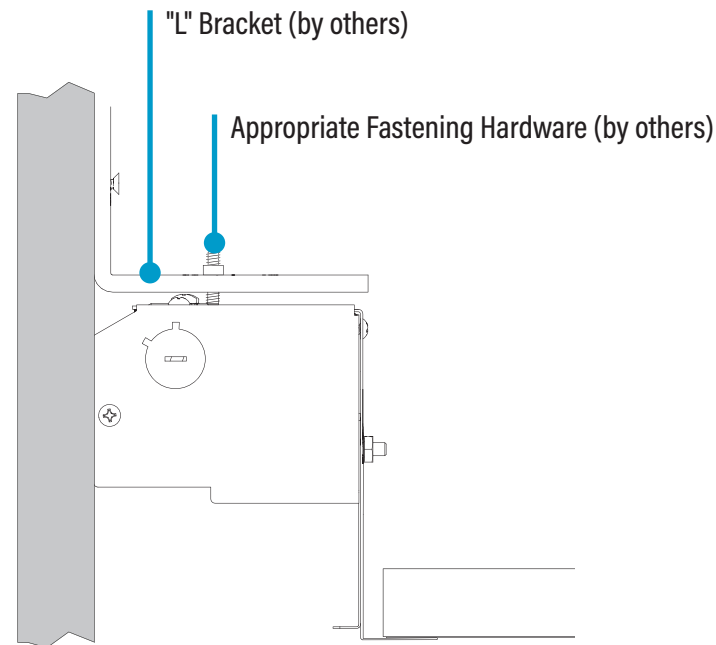


MOUNT TO THREADED ROD (Standard)

- Mount the luminaire to structure using a 1/4"-20 nut and washer on a threaded rod.
- NOTE:** The flexible mounting plate can move for a precise fit.
- If there is no joiner/ender, then tighten nuts fully. **PROCEED TO STEP 6.**

Option 1

Side View

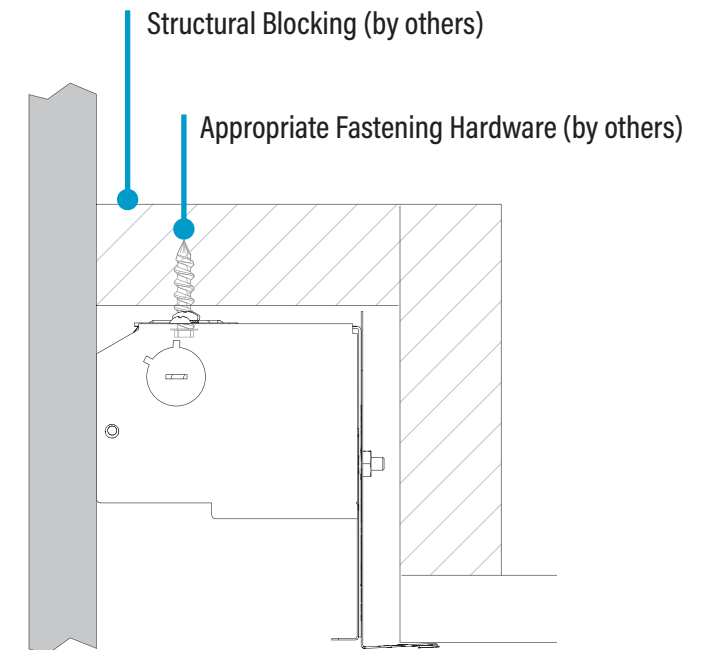


MOUNT TO "L" BRACKET (Optional)

- Mount the luminaire to structure using an "L" bracket with appropriate fastening hardware.
- NOTE:** The flexible mounting plate can move for a precise fit.
- If there is no joiner/ender, then tighten nuts fully. **PROCEED TO STEP 6.**

Option 2

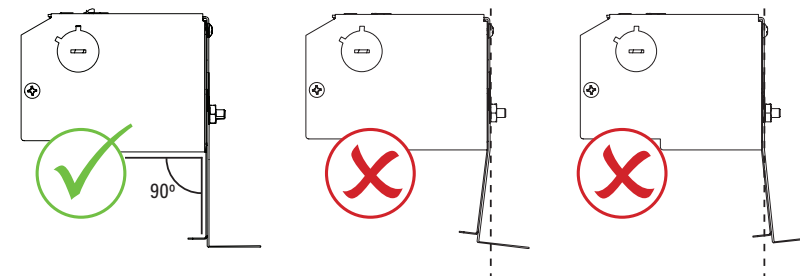
Side View




MOUNT TO STRUCTURE (Optional)


- Mount the luminaire to structure using appropriate fastening hardware.
- NOTE:** The flexible mounting plate can move for a precise fit.
- If there is no joiner/ender, then tighten fully. **PROCEED TO STEP 6.**


CAUTION

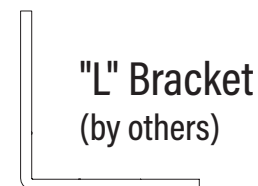


Improper alignment of flange will cause gaps

 #8-18 x 1/2" Screw
(provided)

 1/4" Washer
(by others)

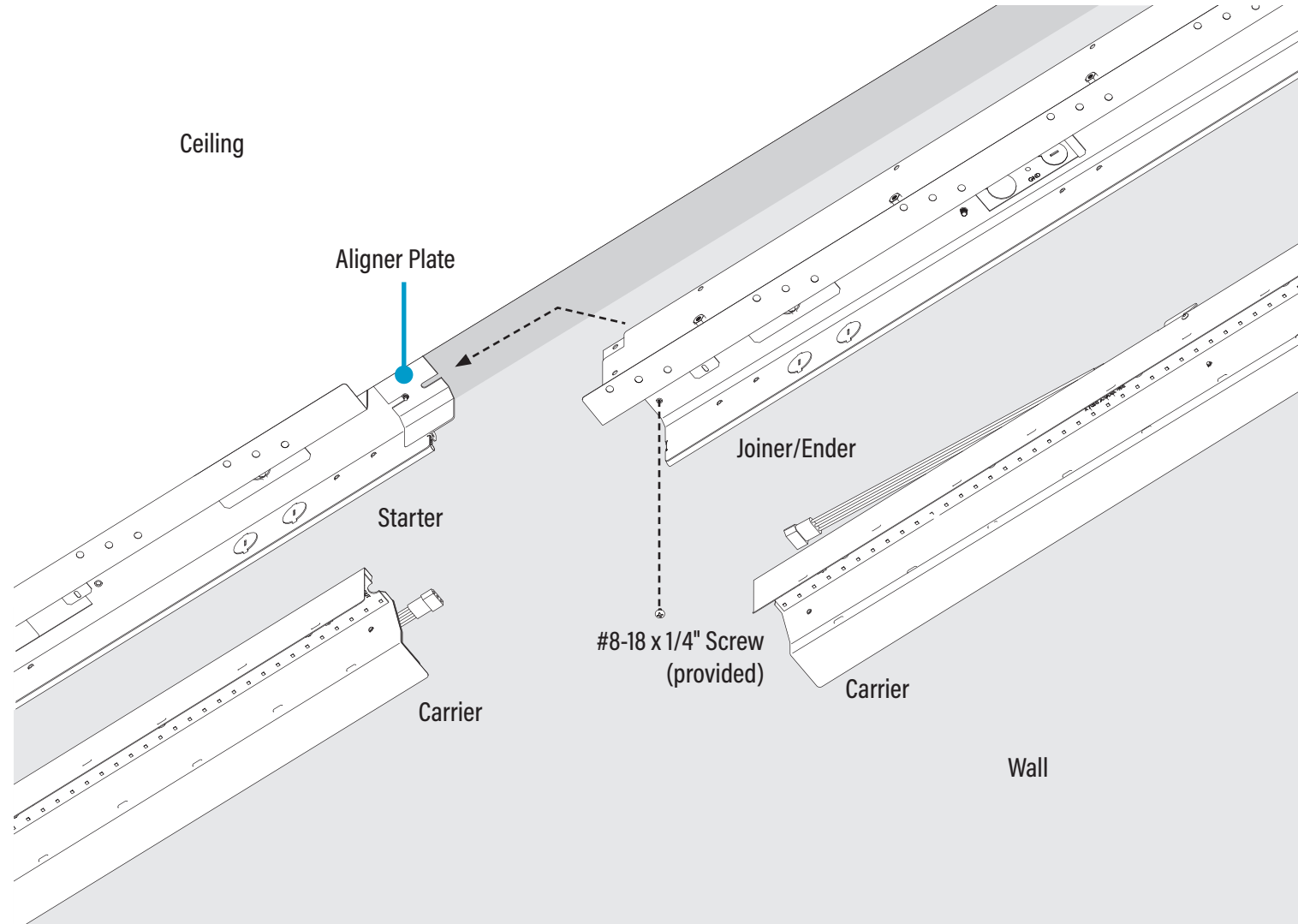
 1/4"-20 Nut
(by others)

 "L" Bracket
(by others)


HP-WS Perimeter Slot Post-Ceiling Spackle Flange Installation Instructions

Step 5 - Joining Luminaires

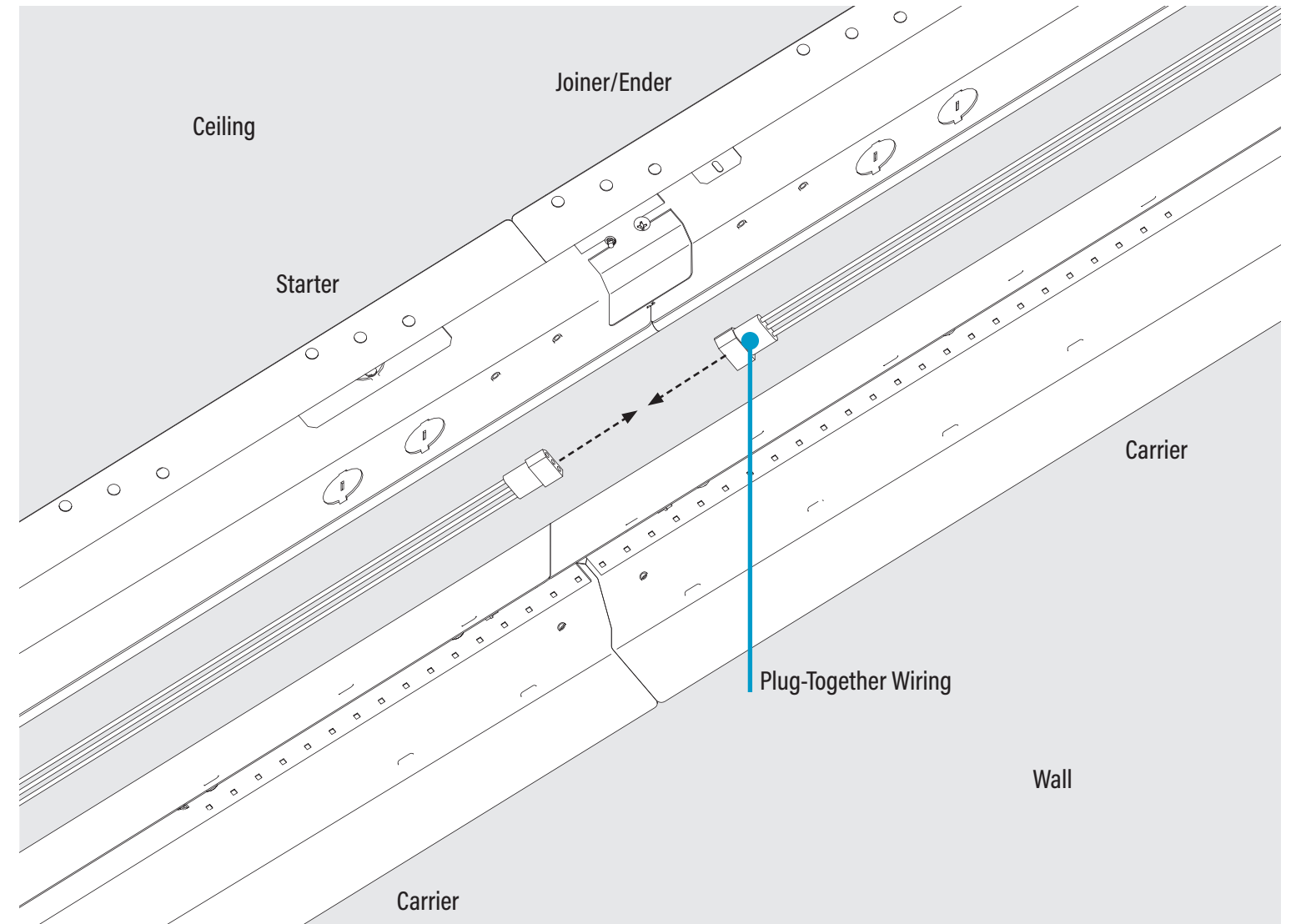
A. Align Starter and Joiner/Ende Bottom-Up View



- The joiner/ender luminaire must be lifted above the aligner plate on the starter luminaire.
- Use a #8-18 x 1/4" screw to fasten the joiner luminaire to the aligner plate.
- See page 7, Step 4C for how to secure a joiner/ender luminaire to structure.

 #8-18 x 1/4" Screw
(provided)

B. Plug-Together Wiring Bottom-Up View



- Connect the plug-together wiring.
- Secure all luminaires by tightening all nuts to threaded rod.

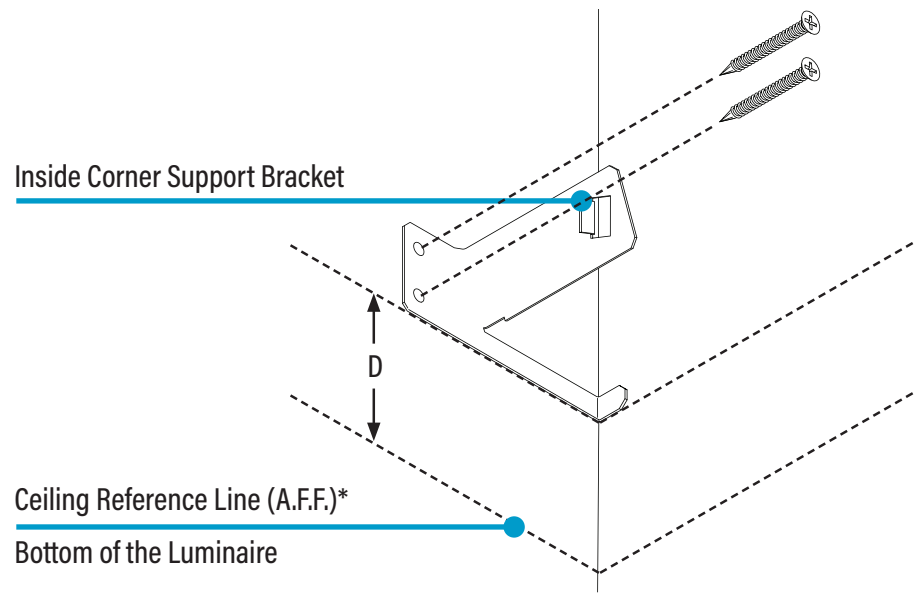


Simple
-Together
Wiring

HP-WS Perimeter Slot Post-Ceiling Spackle Flange Installation Instructions

Step 6A - Inside Corner

A. Inside Corner Support Bracket Bottom-Up View

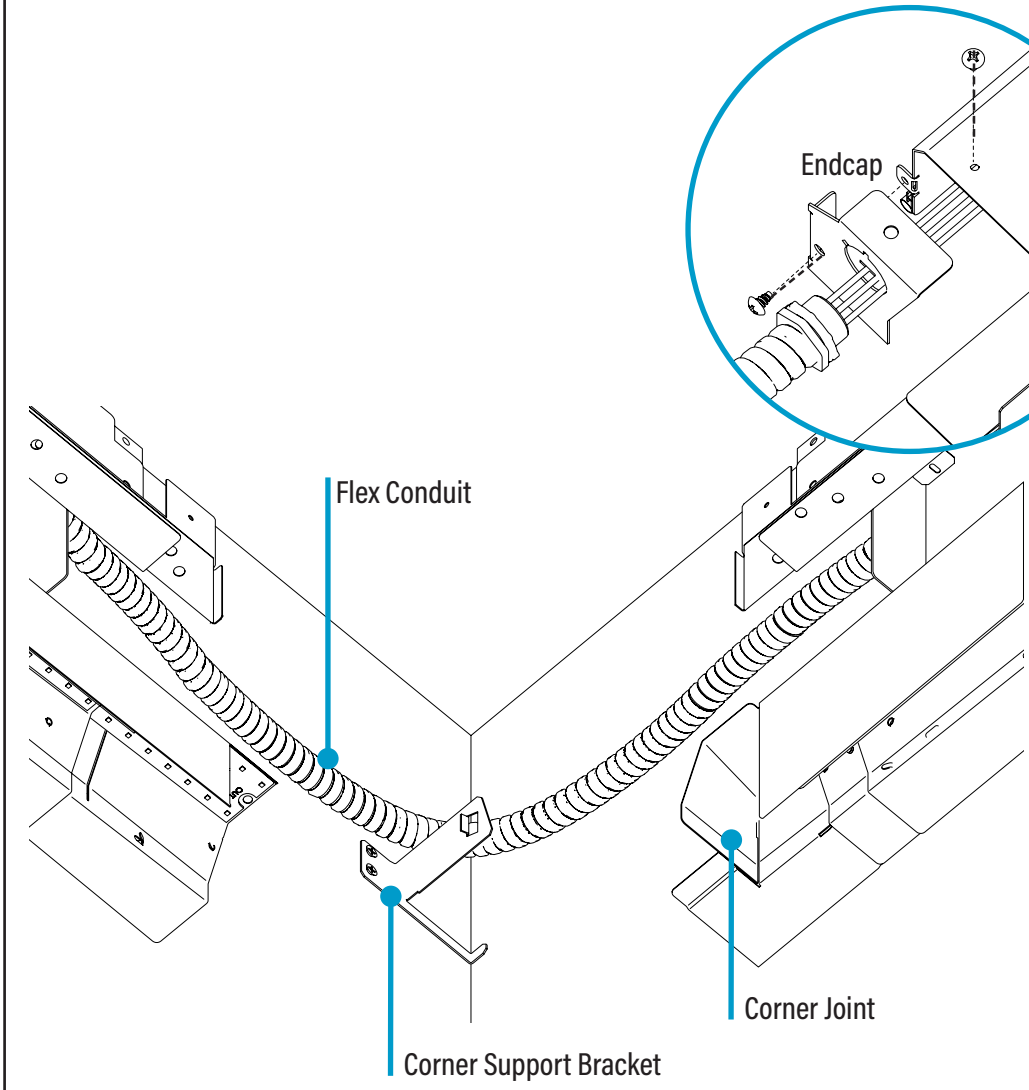


Luminaire Depth	D (in)
2"	A.F.F. ceiling height + 3-5/16
4"	A.F.F. ceiling height + 5-5/16
6"	A.F.F. ceiling height + 7-5/16

- Fasten inside corner support bracket at distance **D** from the ceiling reference line A.F.F.*.
- Fasten bracket using appropriate #10 screws.

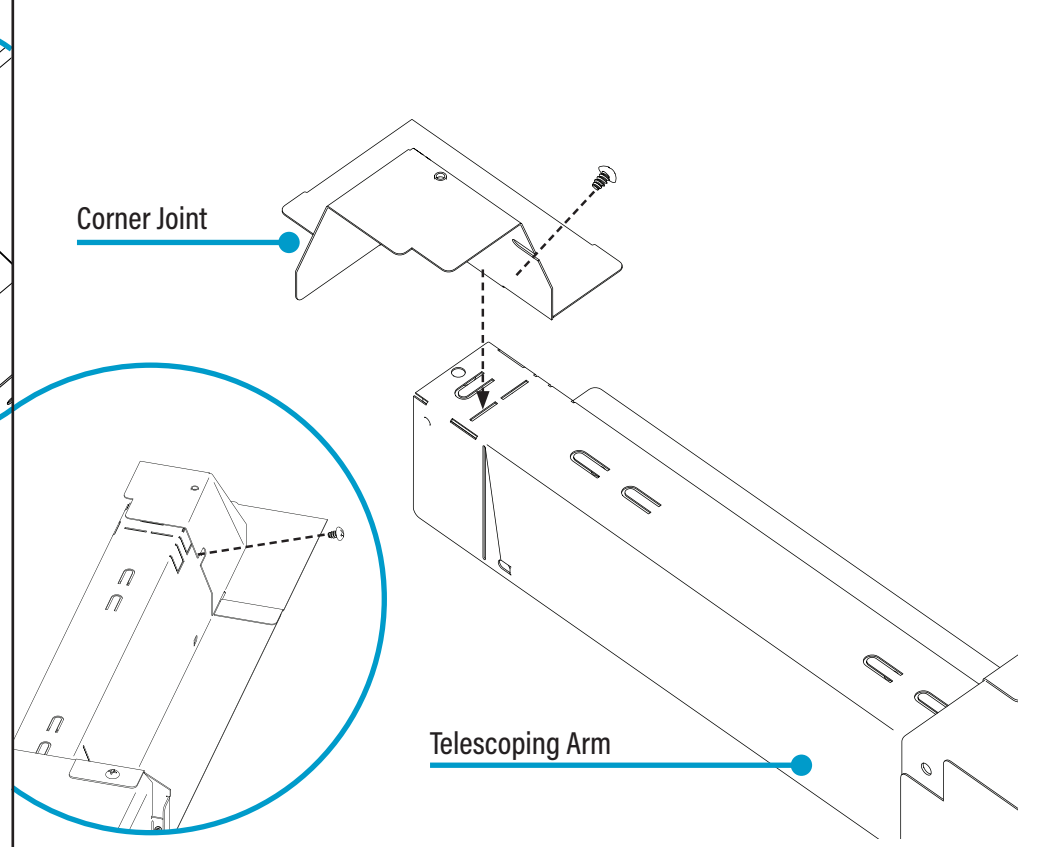
*A.F.F. - Above Finished Floor

B. Connect Flex Conduit Bottom-Up View

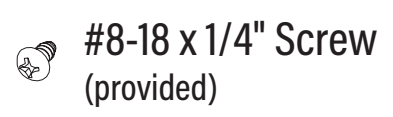
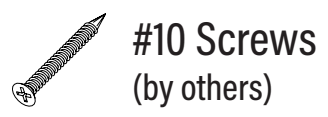


- Connect the through wiring using flex conduit and make sure the flex conduit goes above the corner support bracket.
- To connect flex conduit, remove two #8-18 x 1/4" screws from telescope endcap for access.

C. Connect Corner Joint Top-Down View



- Connect the corner joint to the right telescoping arm using #8-18 x 1/4" screw.

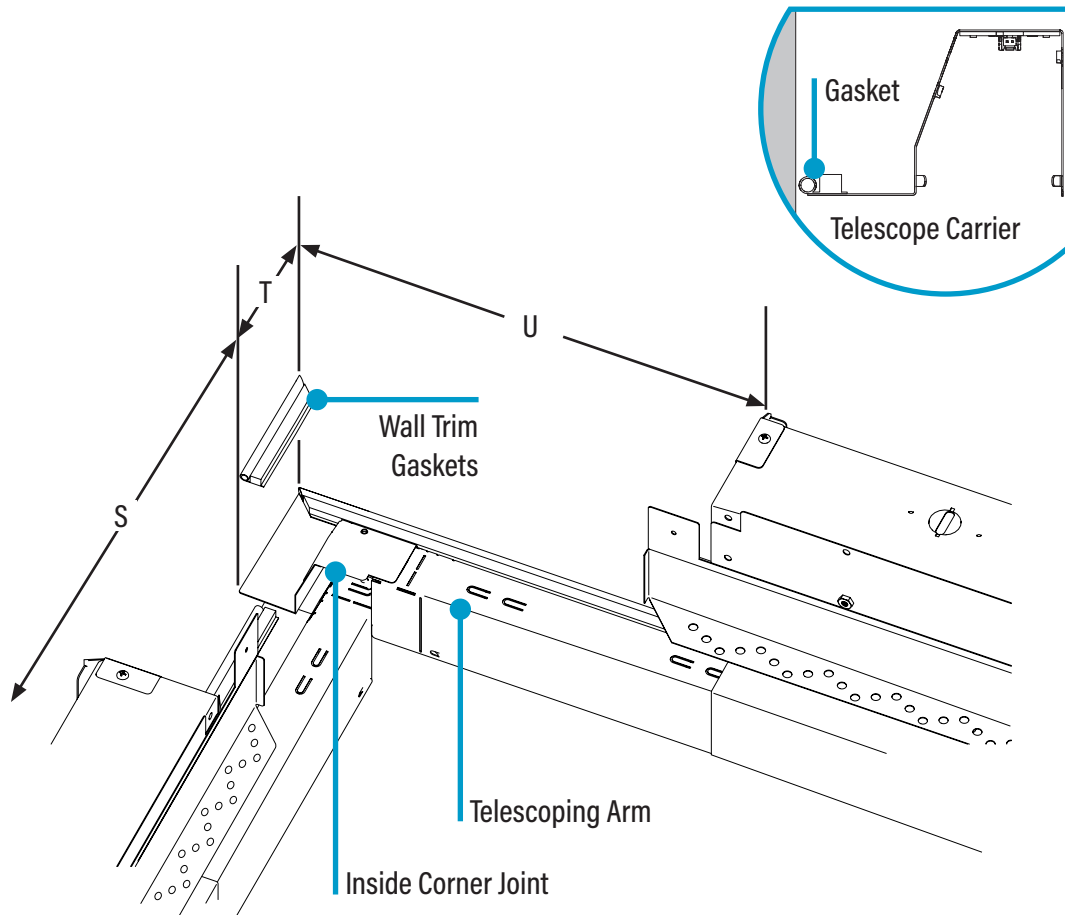


CONTINUED

HP-WS Perimeter Slot Post-Ceiling Spackle Flange Installation Instructions

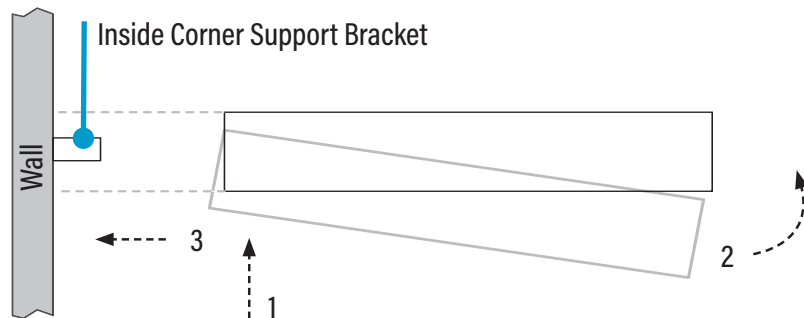
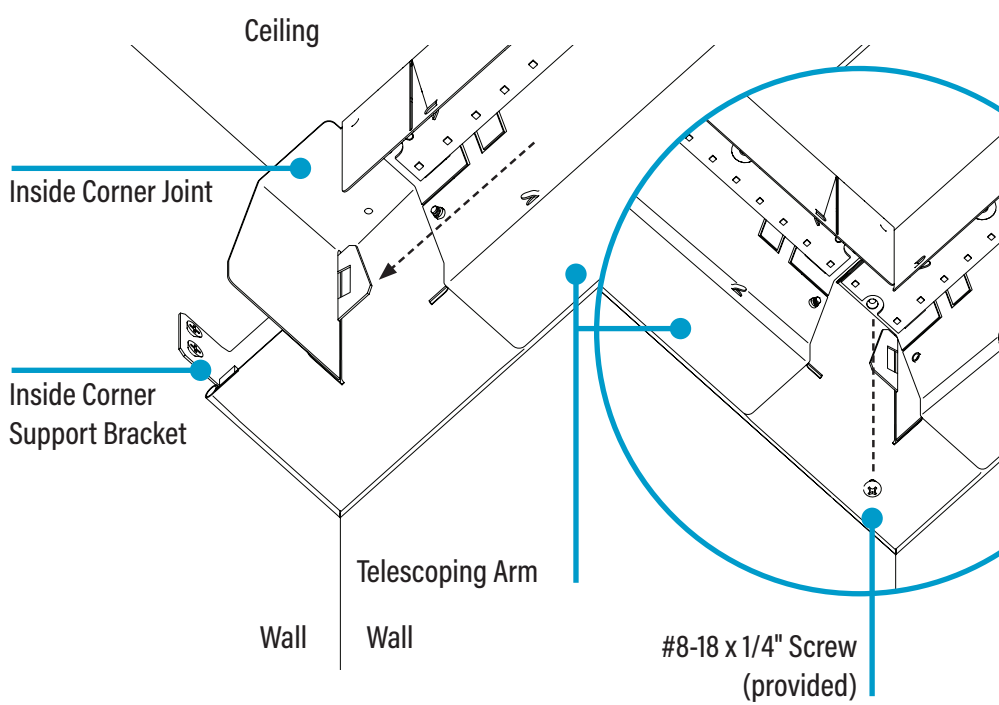
Step 6A - Inside Corner

D. Install Gaskets Top View



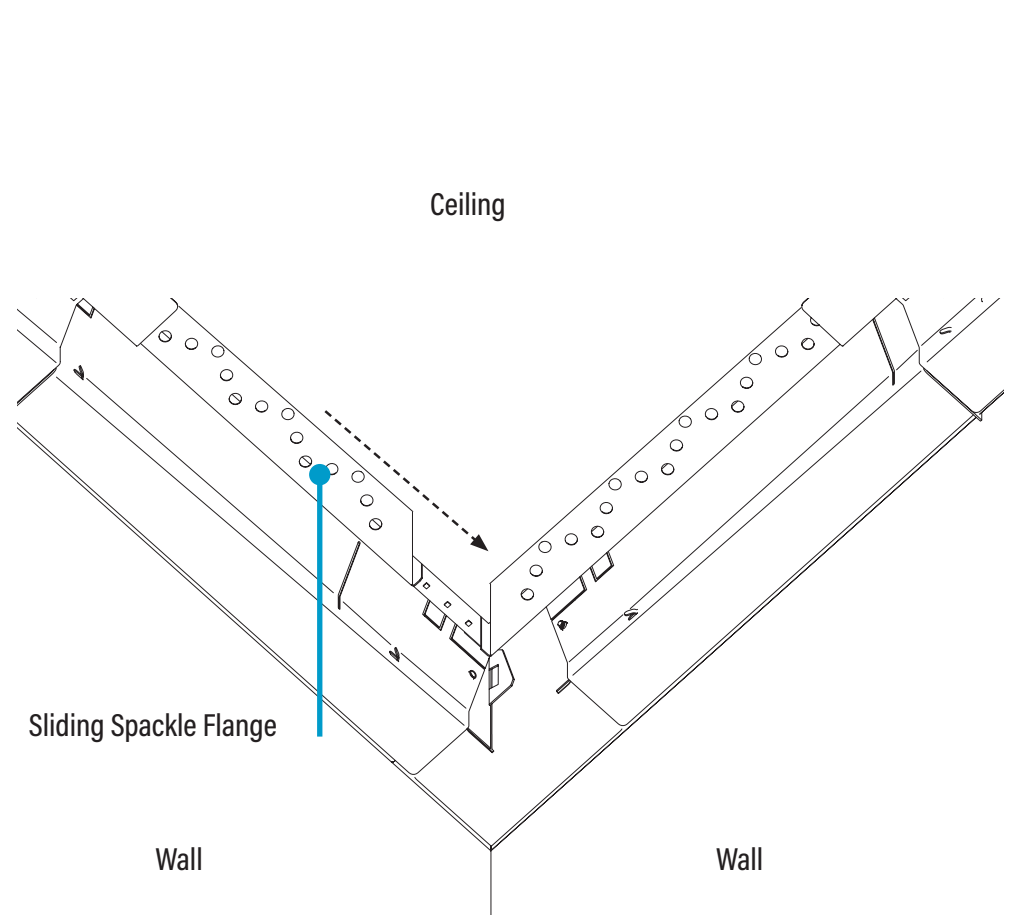
- Locate wall trim gasket and cut to lengths **S**, **T**, & **U** after telescoping arms are extended.
- Cut miters where **T** and **U** meet at corner.
- Install corner gaskets by removing liner to expose adhesive, and attach gaskets to telescope carriers as shown.

E. Connect Telescope Arms Bottom-Up View




- Tip in right side carrier/telescoping arm towards corner support bracket.
- Reattach carrier by rotating carrier clips 90° counter-clockwise.
- Raise left side carrier/telescoping arm into place and fasten to right side telescoping arm at the corner joint using #8-18 x 1/4" screw.
- Secure all carriers with #8-18 x 1/2" screws.


F. Extend Sliding Spackle Flanges Bottom-Up View



- Extend sliding spackle flanges until they meet at the corner.

 #8-18 x 1/4" Screw (provided)

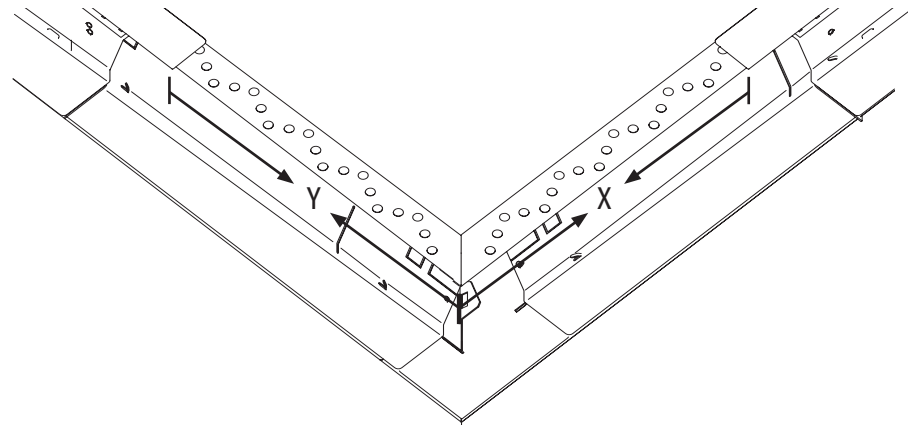
 Wall Trim Gaskets (provided)

 #8-18 x 1/2" Screws (provided)

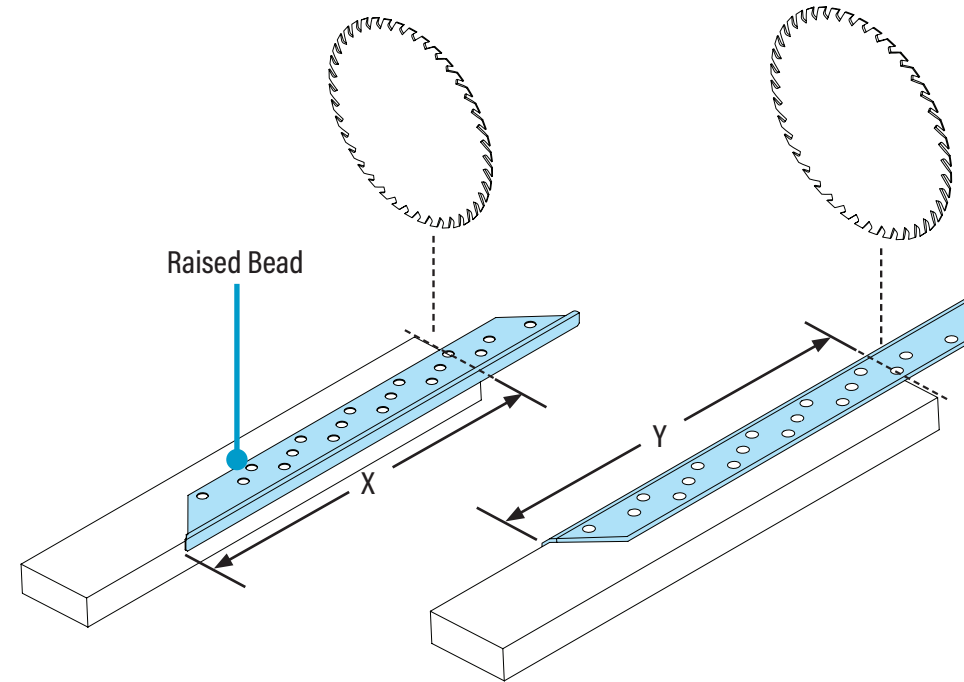
HP-WS Perimeter Slot Post-Ceiling Spackle Flange Installation Instructions

Step 6A - Inside Corner

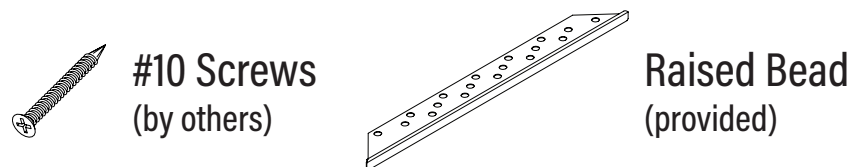
D. Measure Telescoping Length Bottom-Up View



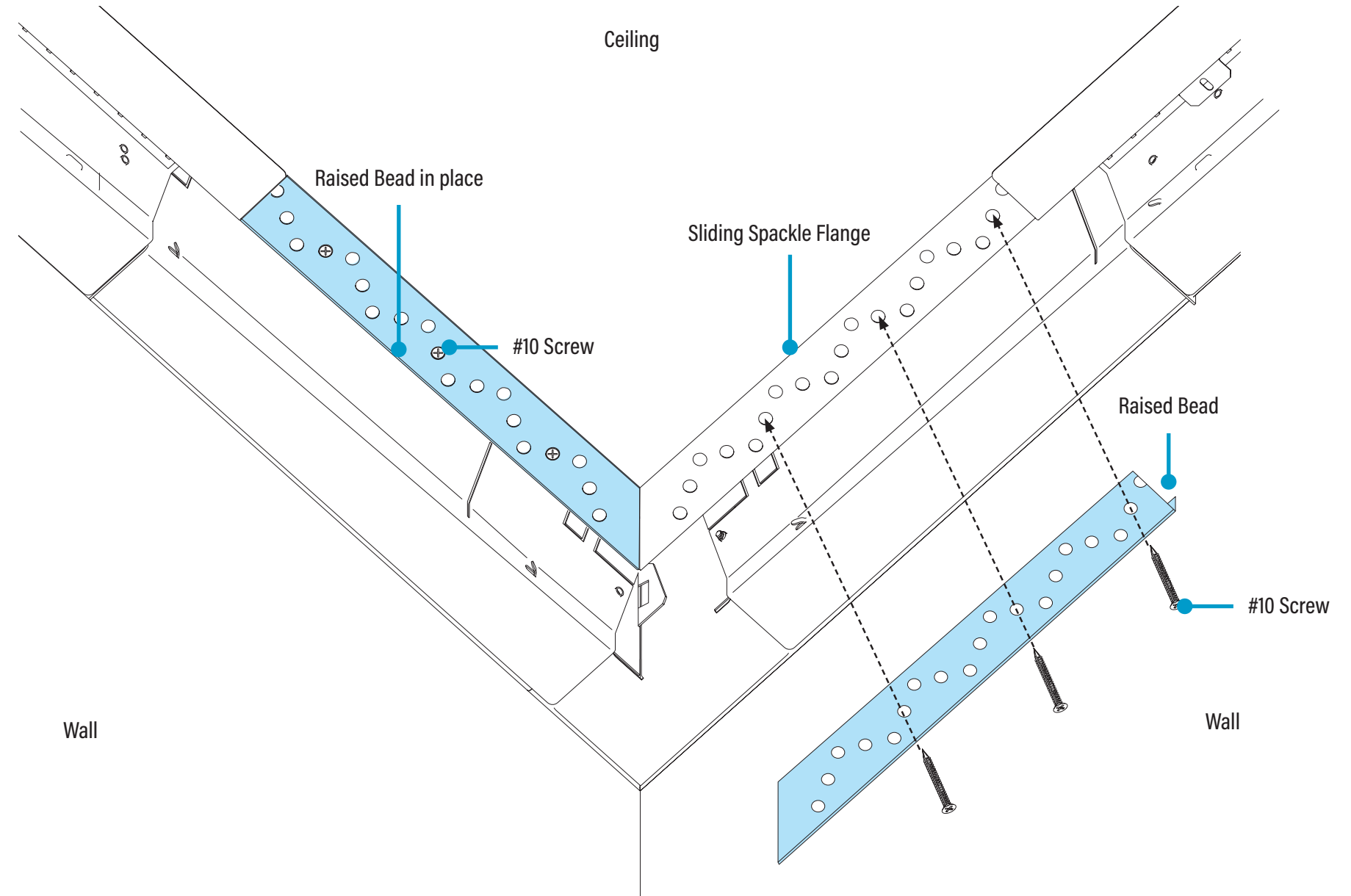
- Measure long edges of telescoping areas. Measurements "X" and "Y" will vary.



- Measure from the square edge to the tip of a mitered edge.
- Cut the raised beads to X and Y



E. Secure Raised Bead Bottom-Up View

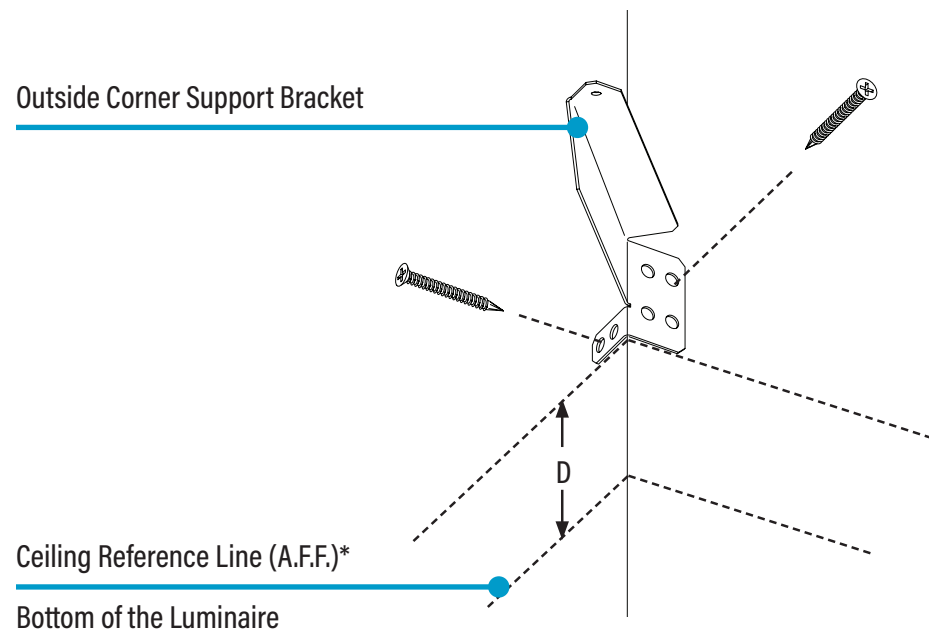


- Mount raised beads to ceiling through telescoping sections using appropriate #10 screws.

HP-WS Perimeter Slot Post-Ceiling Spackle Flange Installation Instructions

Step 6B - Outside Corner

A. Outside Corner Support Bracket Bottom-Up View

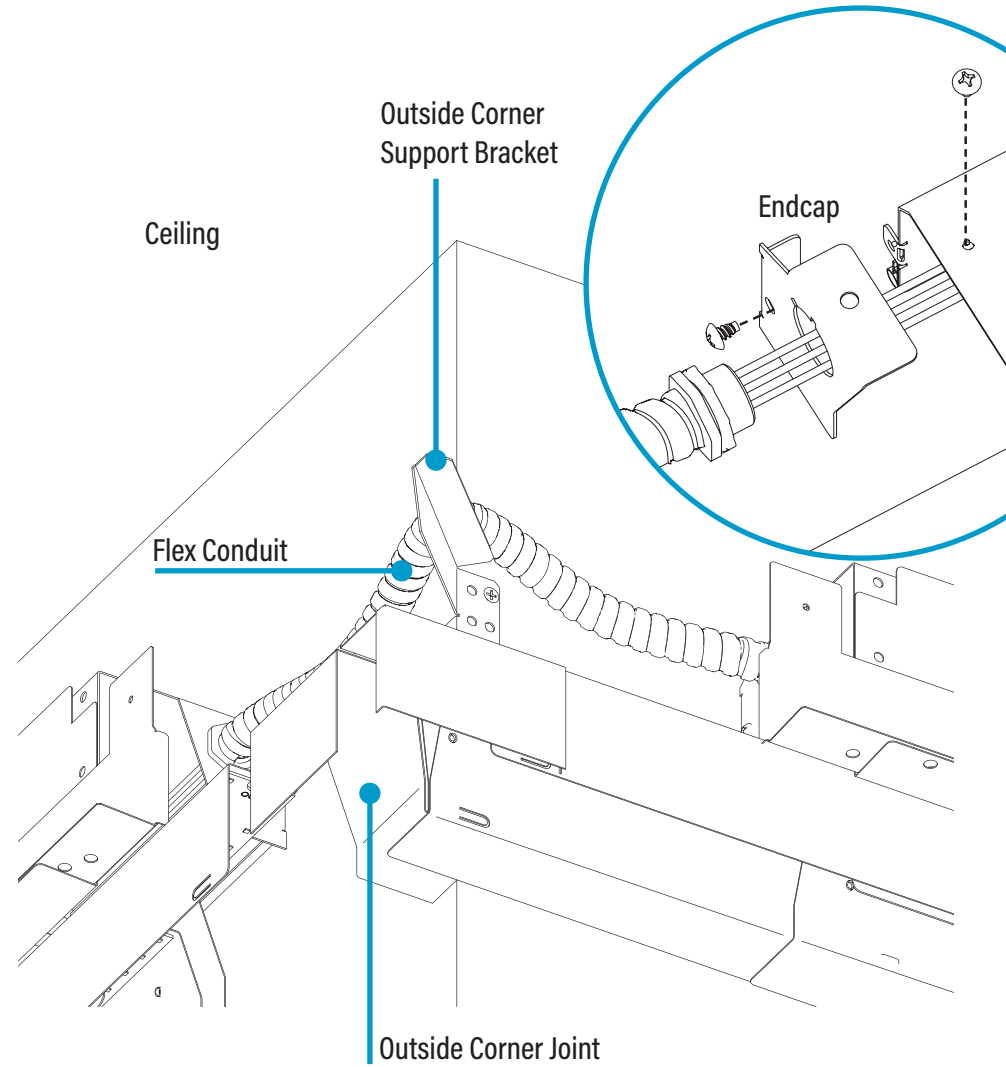


Luminaire Depth	D (in)
2"	A.F.F. ceiling height + 3-5/16
4"	A.F.F. ceiling height + 5-5/16
6"	A.F.F. ceiling height + 7-5/16

- Fasten outside corner support bracket at distance **D** from the ceiling reference line A.F.F.*.
- Fasten bracket using appropriate #10 screws.

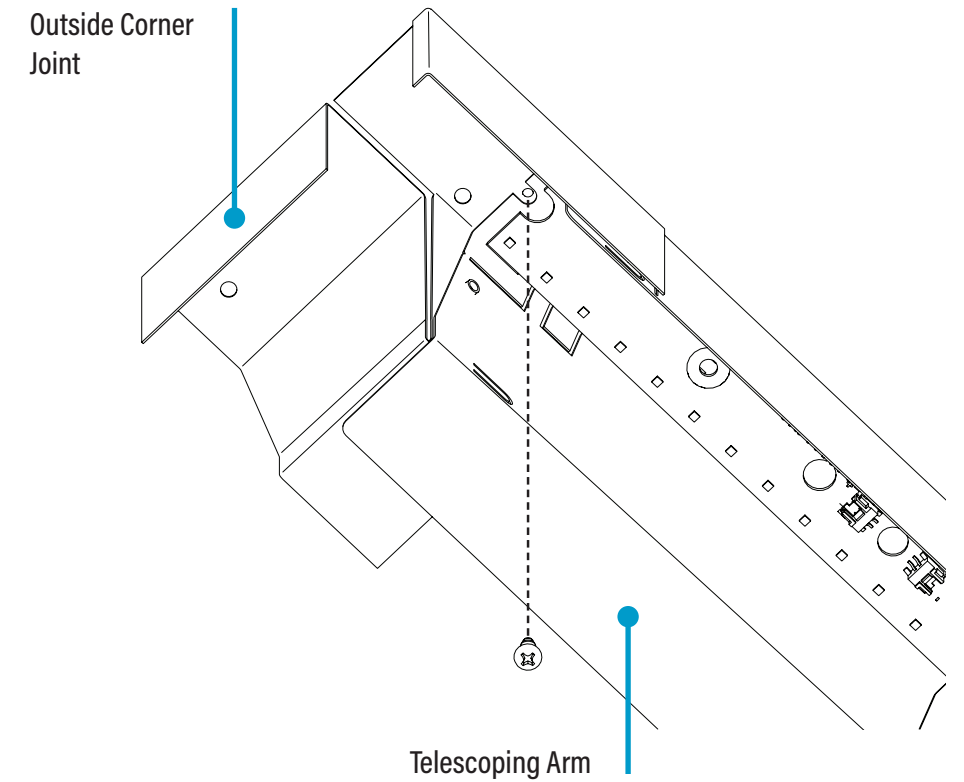
*A.F.F. - Above Finished Floor

B. Connect Flex Conduit Bottom-Up View

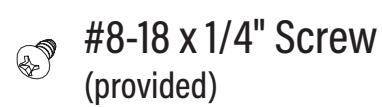
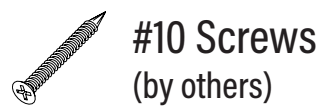


- Connect the through wiring using flex conduit and be sure the flex conduit goes above the corner support bracket.
- To connect flex conduit, remove two #8-18 x 1/4" screws from telescope endcap for access.

C. Connect Corner Joint Bottom-Up View



- Connect the corner joint to the right telescoping arm using #8-18 x 1/4" screw.

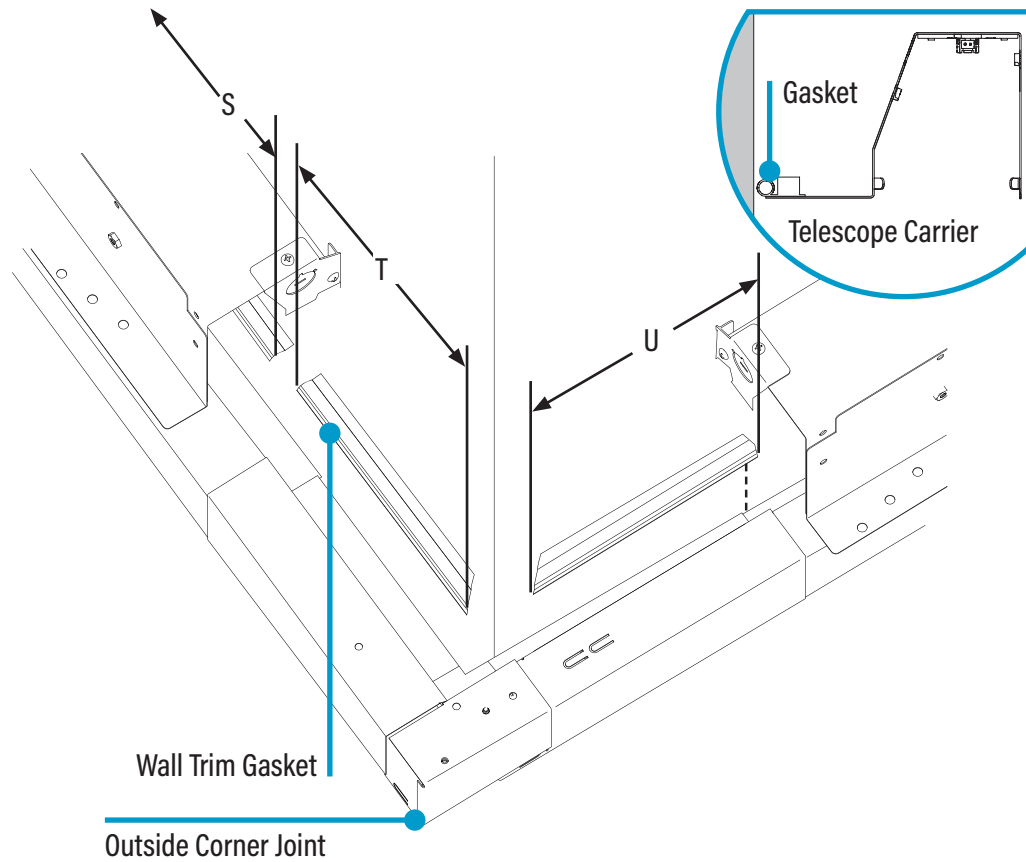


CONTINUED

HP-WS Perimeter Slot Post-Ceiling Spackle Flange Installation Instructions

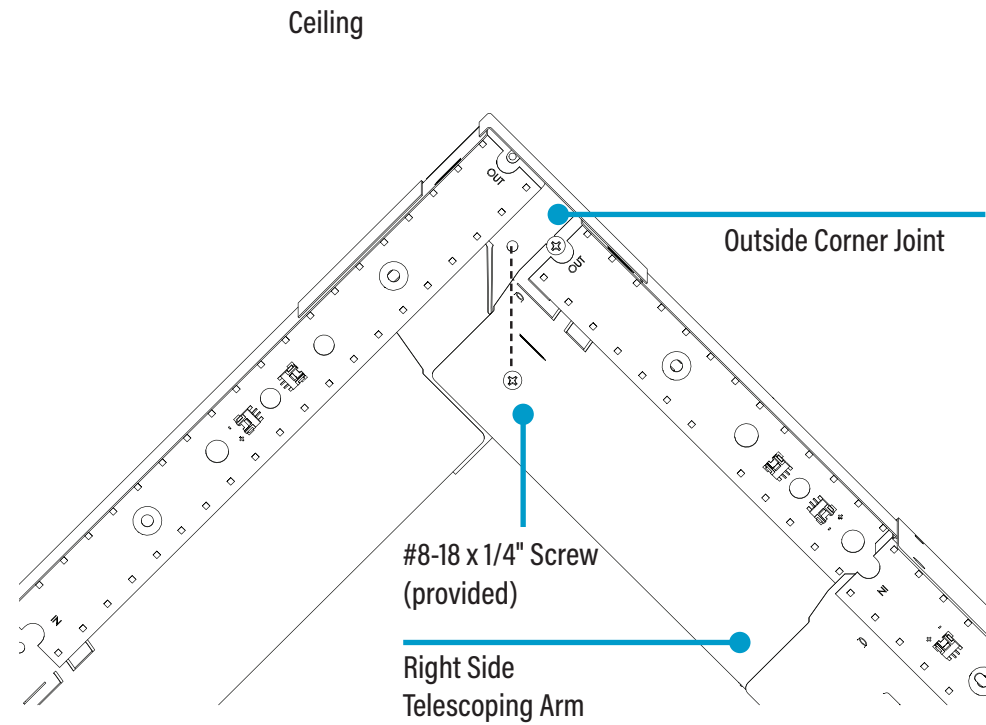
Step 6B - Outside Corner

D. Install Gaskets Top View



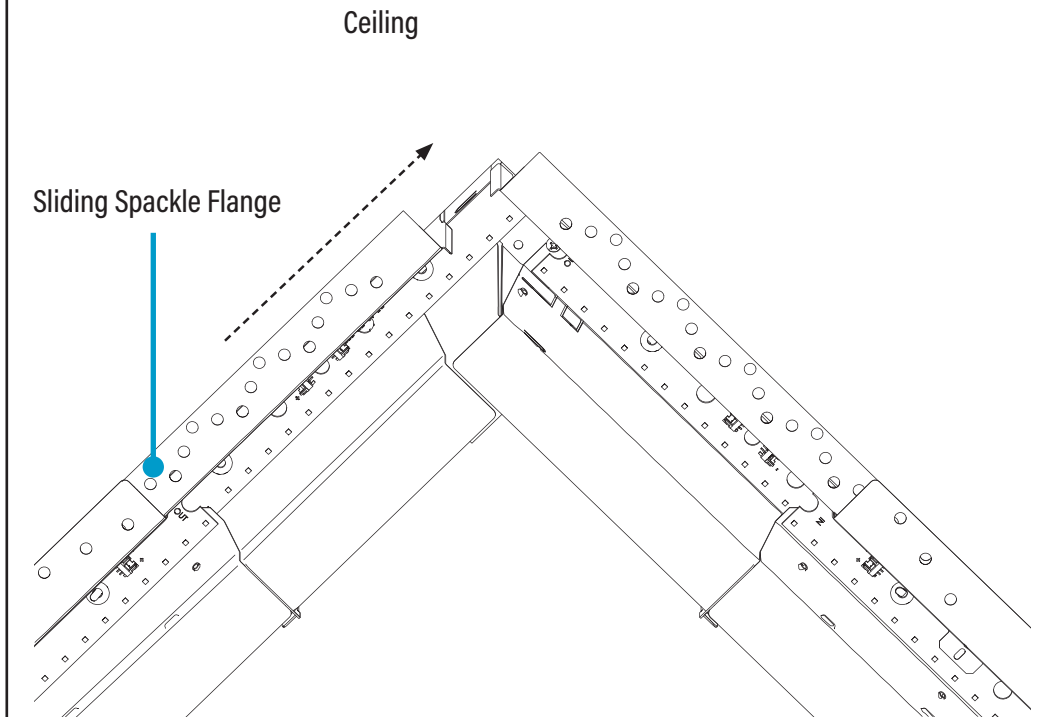
- Locate wall trim gasket and cut to lengths **S**, **T**, & **U** after telescoping arms are extended.
- Cut miters where **T** and **U** meet at corner.
- Install corner gaskets by removing liner to expose adhesive, and attach gaskets to telescope carriers as shown.

E. Connect Telescope Arms Bottom-Up View




- Tip in right side carrier/telescoping arm towards corner support bracket.
- Reattach carrier by rotating carrier clips 90° counter-clockwise.
- Raise left side carrier/telescoping arm into place and fasten to right side telescoping arm at the corner joint using #8-18 x 1/4" screw.
- Secure all carriers with #8-18 x 1/2" screws.


F. Extend Sliding Spackle Flanges Bottom-Up View



- Extend sliding spackle flanges until they meet at the corner.

 #8-18 x 1/4" Screw (provided)

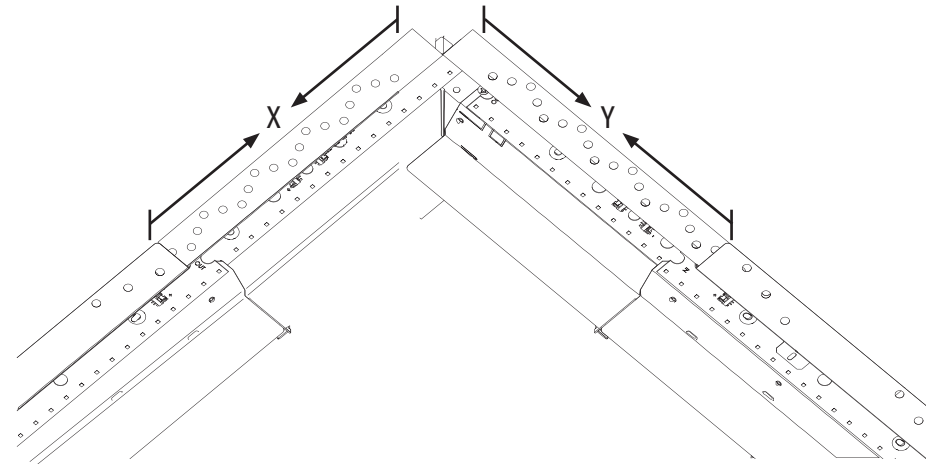
 Wall Trim Gaskets (provided)

 #8-18 x 1/2" Screws (provided)

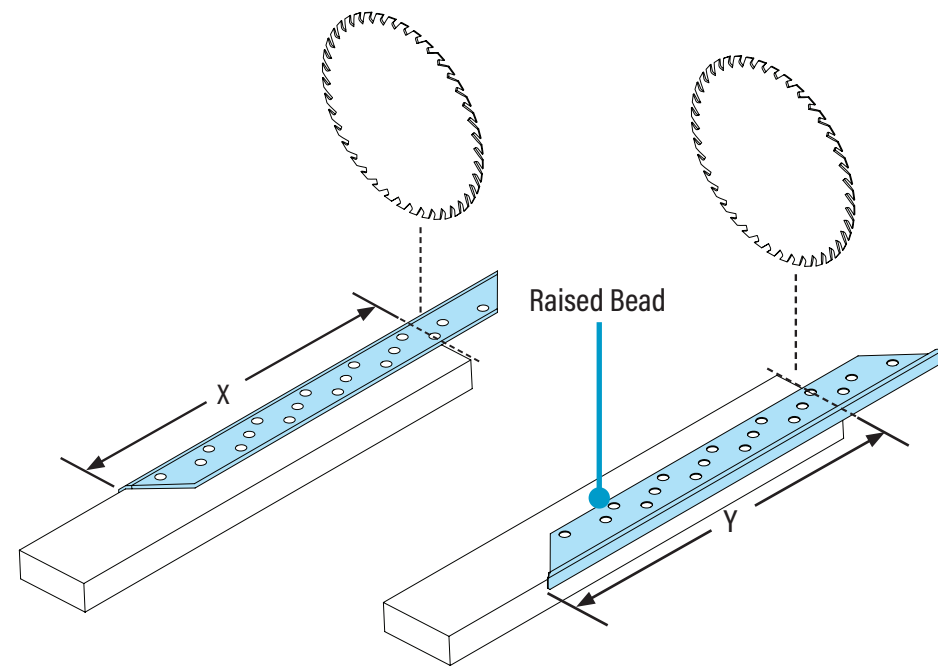
HP-WS Perimeter Slot Post-Ceiling Spackle Flange Installation Instructions

Step 6B - Outside Corner

G. Measure Telescoping Length Bottom-Up View

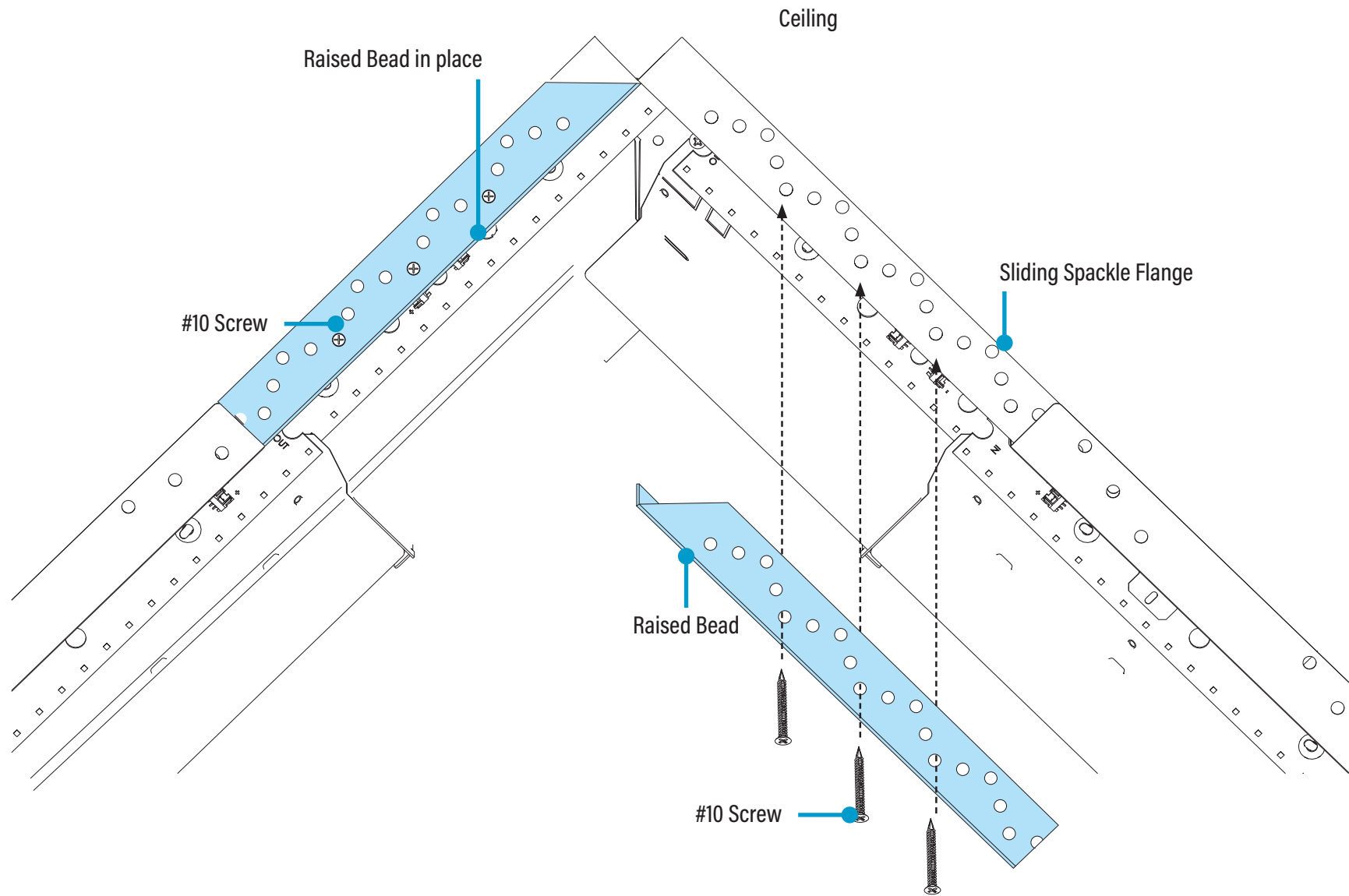


- Measure telescoping areas. Measurements "X" and "Y" will vary.

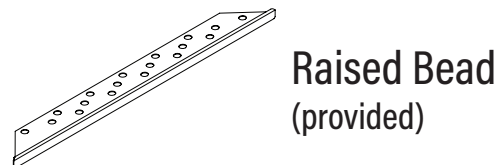


- Measure from the square edge to the tip of a mitered edge.
- Cut the raised beads to X and Y

H. Secure Raised Bead Bottom-Up View



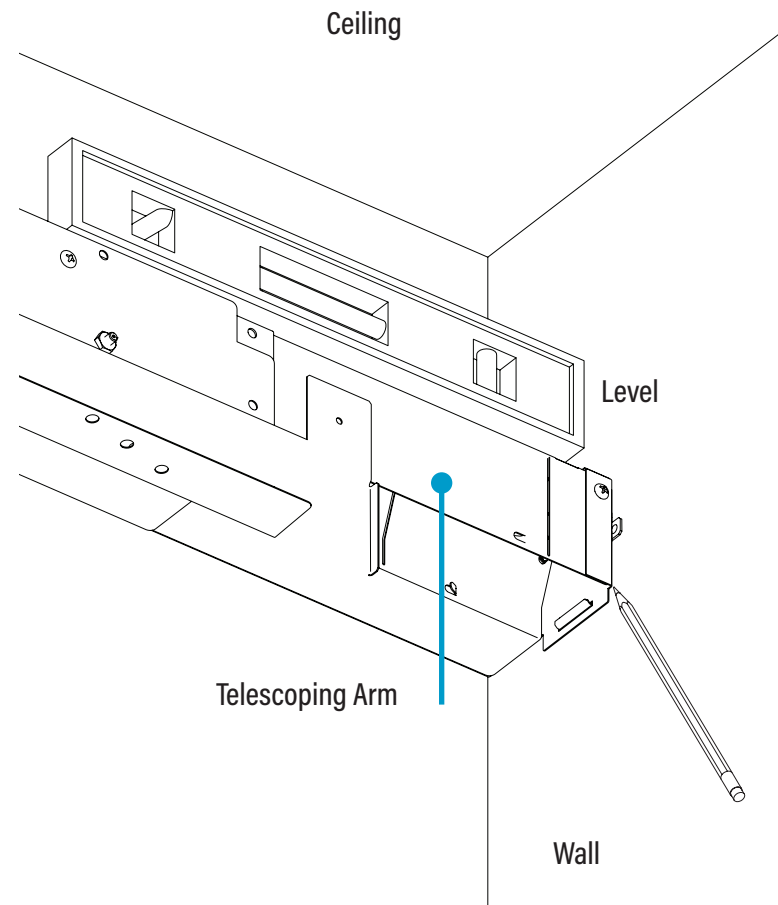
- Mount raised beads to ceiling through telescoping sections using appropriate #10 screws.



HP-WS Perimeter Slot Post-Ceiling Spackle Flange Installation Instructions

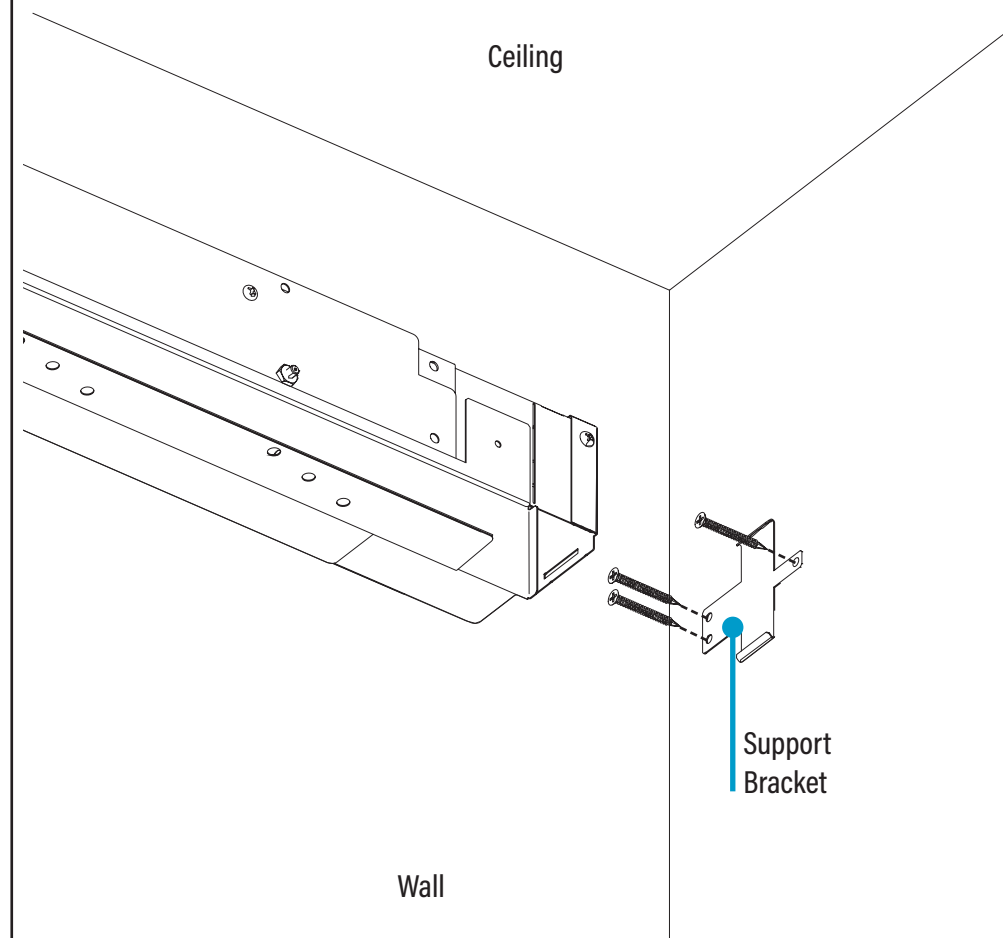
Step 7 - Straight Telescope

A. Extend Straight Telescope Bottom-Up View



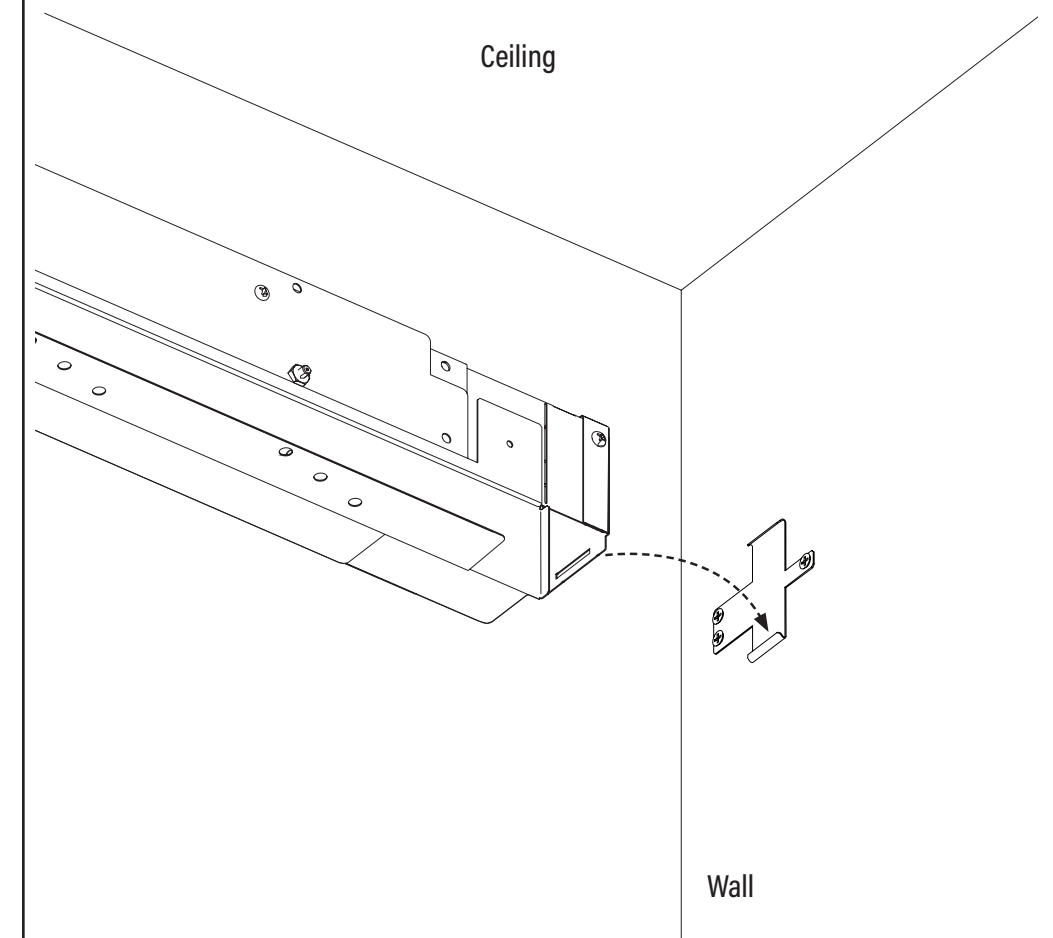
- Extend telescoping arm to wall, ensuring it is level.
- Mark where the telescope wall support bracket will be mounted.

B. Mount Support Bracket Bottom-Up View

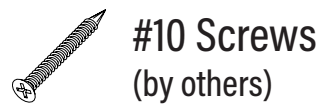


- Mount support bracket to wall using appropriate #10 screws.

C. Hook Telescope Bottom-Up View



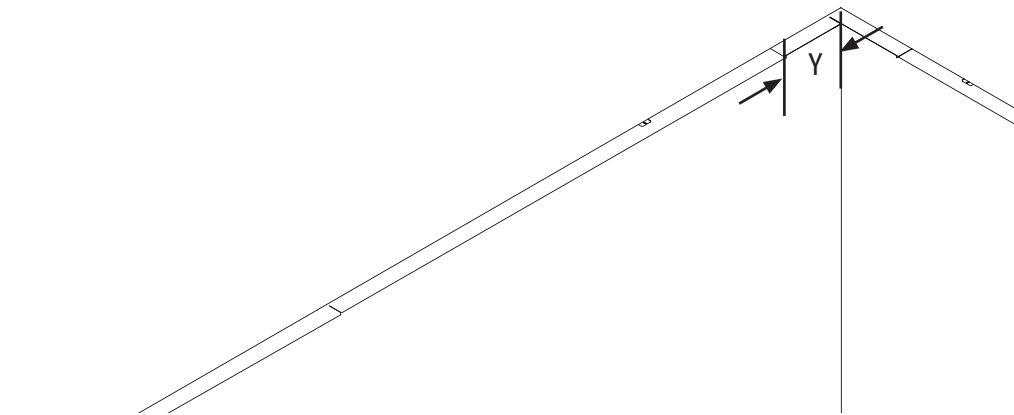
- Hook the telescope arm onto the support bracket using the slot provided.



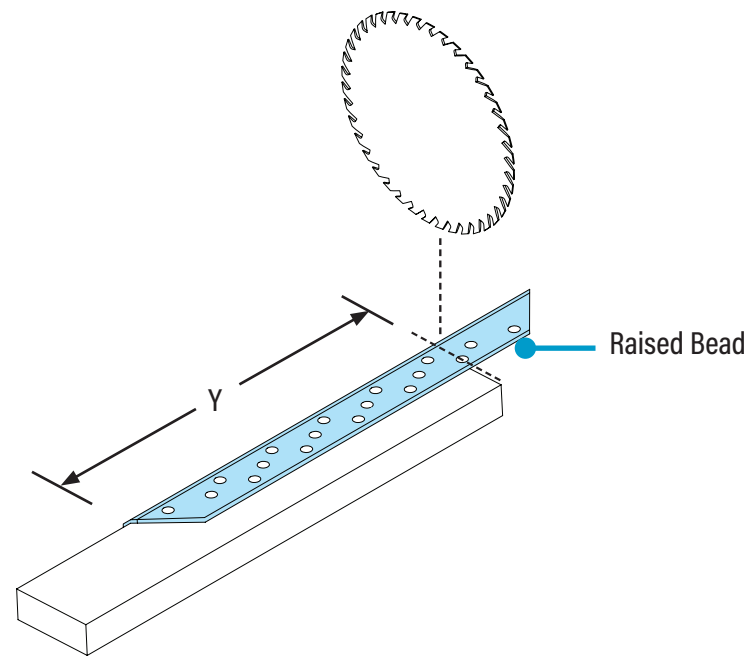
HP-WS Perimeter Slot Post-Ceiling Spackle Flange Installation Instructions

Step 7 - Straight Telescope

D. Measure Telescoping Length Bottom-Up View

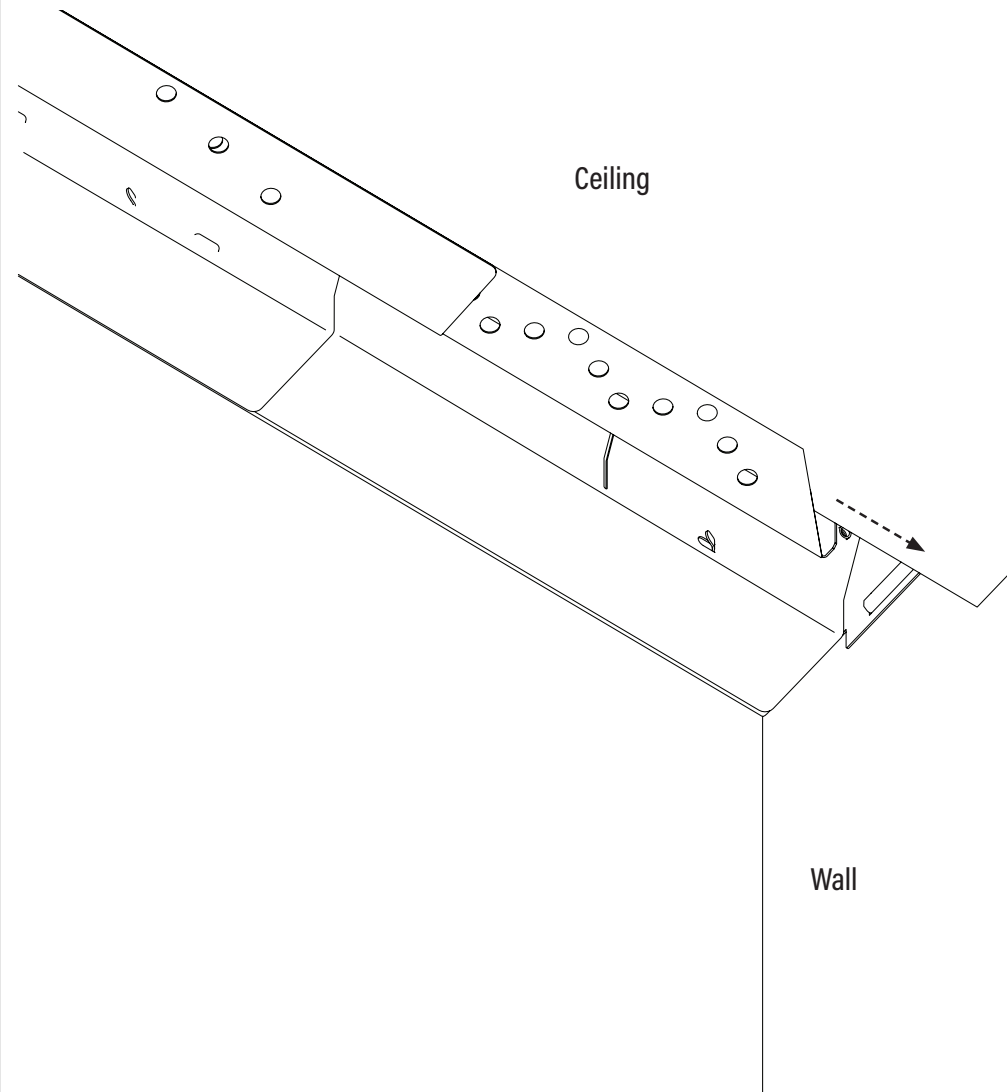


- Telescoping area measurement "Y" will vary.



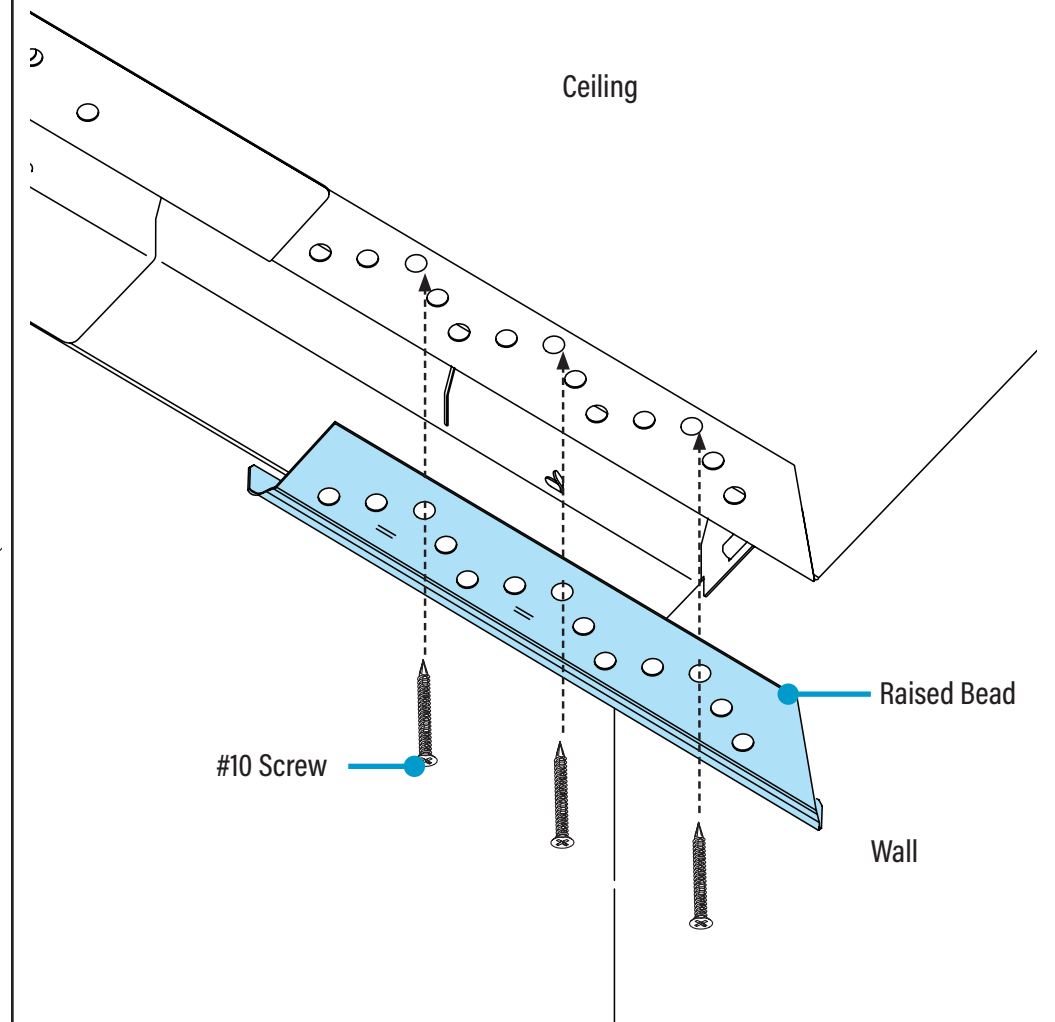
- Measure from the square edge to the tip of a mitered edge.
- Cut the raised bead to Y

E. Extend Sliding Spackle Flanges Bottom-Up View



- Extend the sliding spackle flange till it meets the wall.

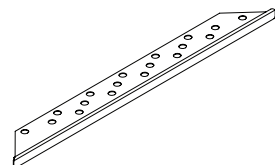
F. Secure Raised Bead Bottom-Up View



- Mount raised bead to ceiling through telescoping section using appropriate #10 screws.



#10 Screws
(by others)

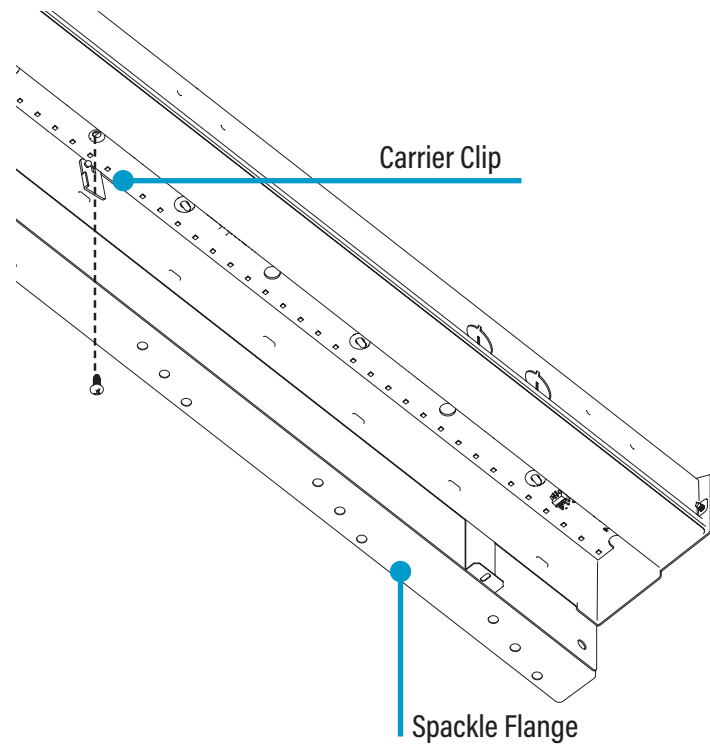


Raised Bead
(provided)

HP-WS Perimeter Slot Post-Ceiling Spackle Flange Installation Instructions

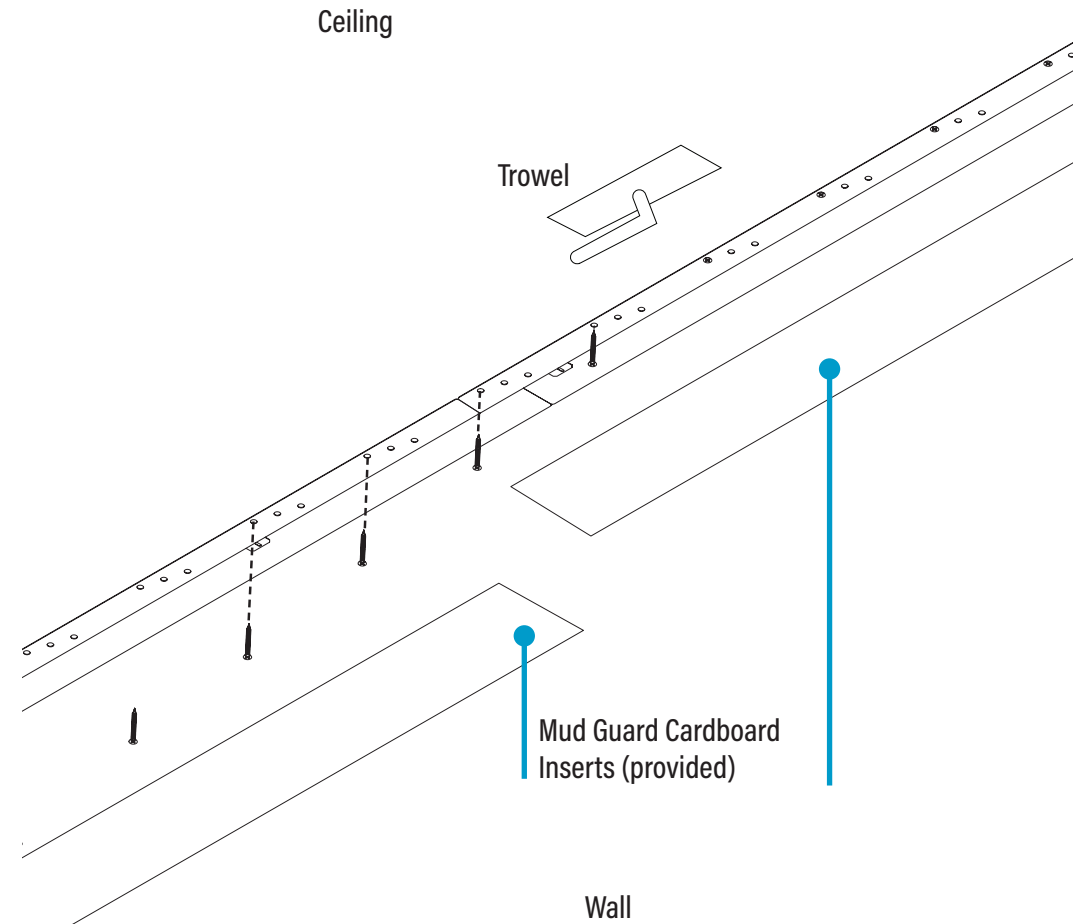
Step 8 - Closing Luminaires

A. Reinstall Carrier Bottom-Up View



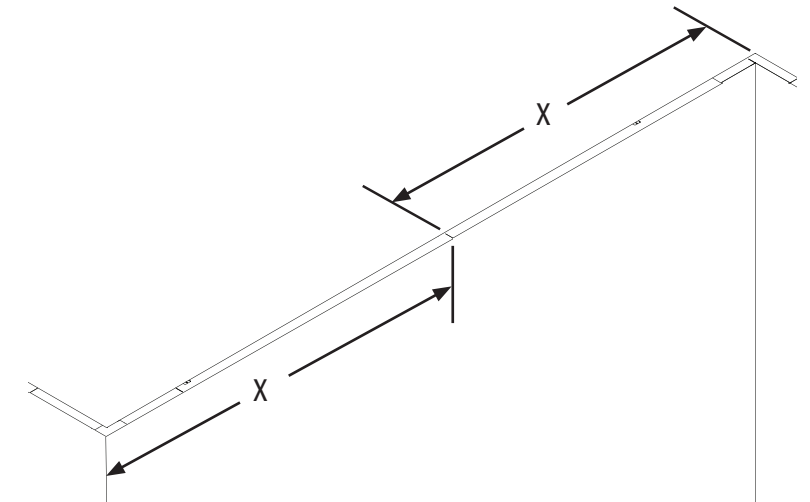
- Reattach carriers by rotating carrier clips 90° counter-clockwise.
- Secure the carriers with #8-18 x 1/2" screws.

B. Secure Spackle Flange Bottom-Up View

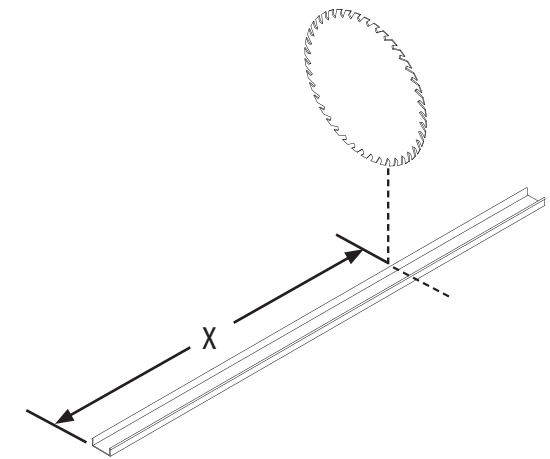


- Mount spackle flange to drywall ceiling using appropriate #10 screws.
- Install the mud guard cardboard inserts to help prevent spackle and paint from getting into the luminaire.
- Spackle to cover the flange.
- Perform all spackling and painting to walls and ceiling before removing "mud guards".


C. Measure Diffusers




- Diffuser measurement "X" will vary.

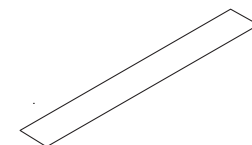


- Diffuser length X is always measured along the longest edge.
- Measure the overall length for square-edged lengths.
- Measure from the square edge to the tip of a mitered edge.
- Cut the diffuser to X minus 1/16". For example, if X is 8'6", cut the diffuser to 8' 5-15/16". This difference accounts for thermal expansion and helps to avoid light leaks.
- Diffusers should be cut at a room temperature between 70°F and 73°F. Contact the factory if cutting at temperature outside that range.

 #8-18 x 1/2" Screws
(provided)

 #10 Screws
(by others)

 #4-24 x 1/4" Self Drilling Screws
(provided)

 Mud Guard
(provided)

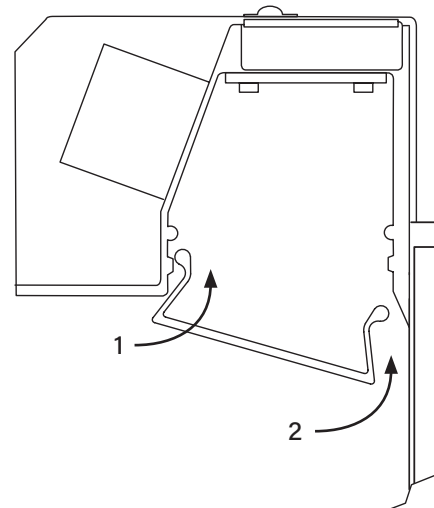
CONTINUED

HP-WS Perimeter Slot Post-Ceiling Spackle Flange Installation Instructions

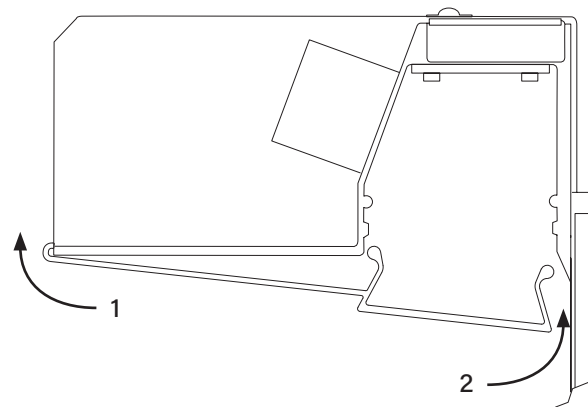
Step 8 - Closing Luminaires

D. Replace Diffusers Side View

4W Only

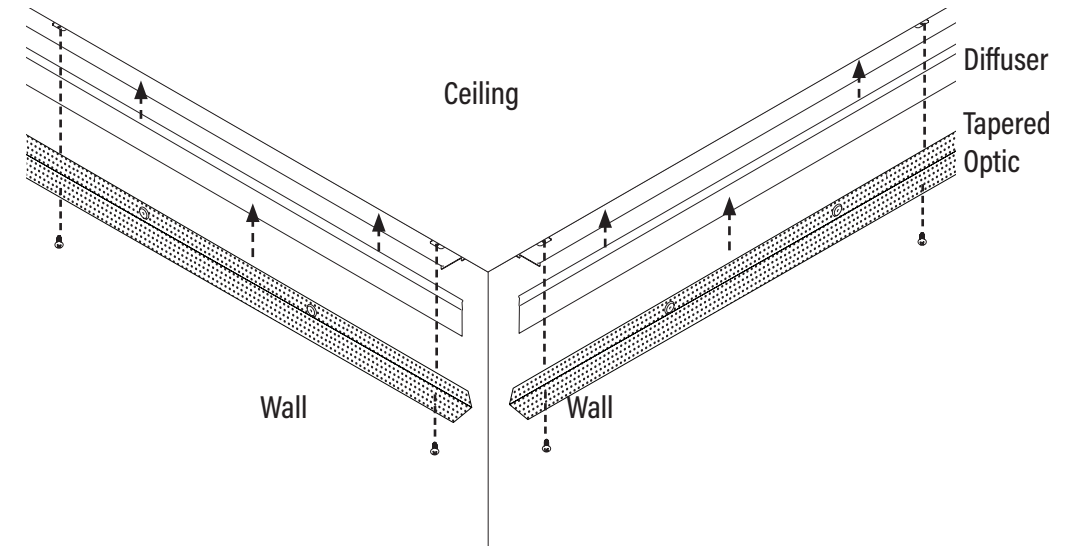


6W Only

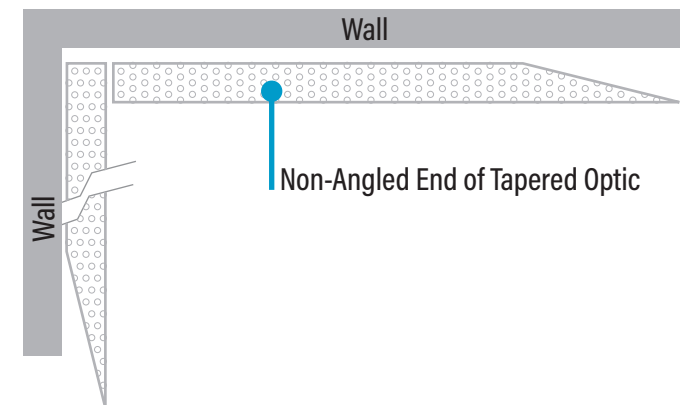


- Replace diffusers

Install Tapered Optic to Inside Corner Bottom-Up View



Bottom-Up View



For Inside Corner Only

- Install diffusers and tapered optics using #4-24 x 1/4" screws at inside corner
- Non-angled end of tapered optic to be placed at ends of luminaire closest to perpendicular wall.
- Turn power on to luminaire.