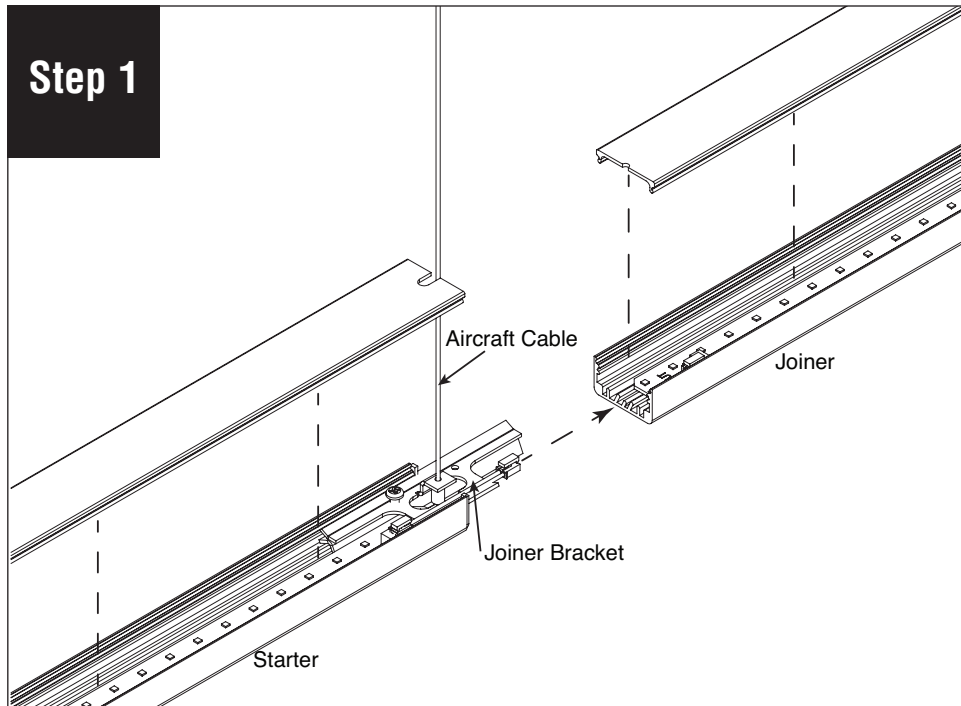
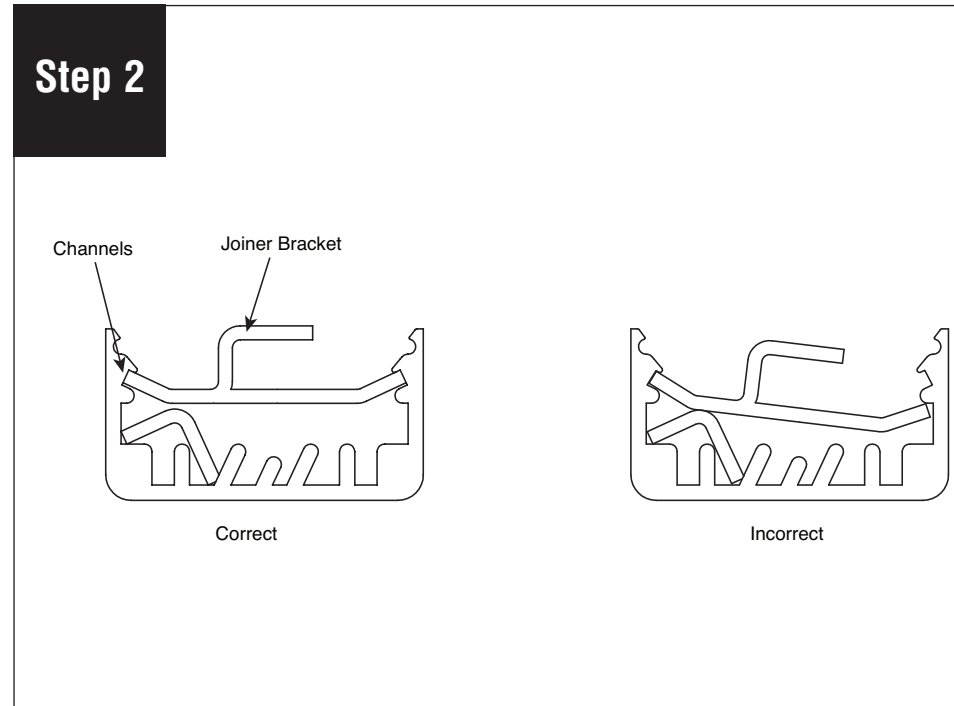


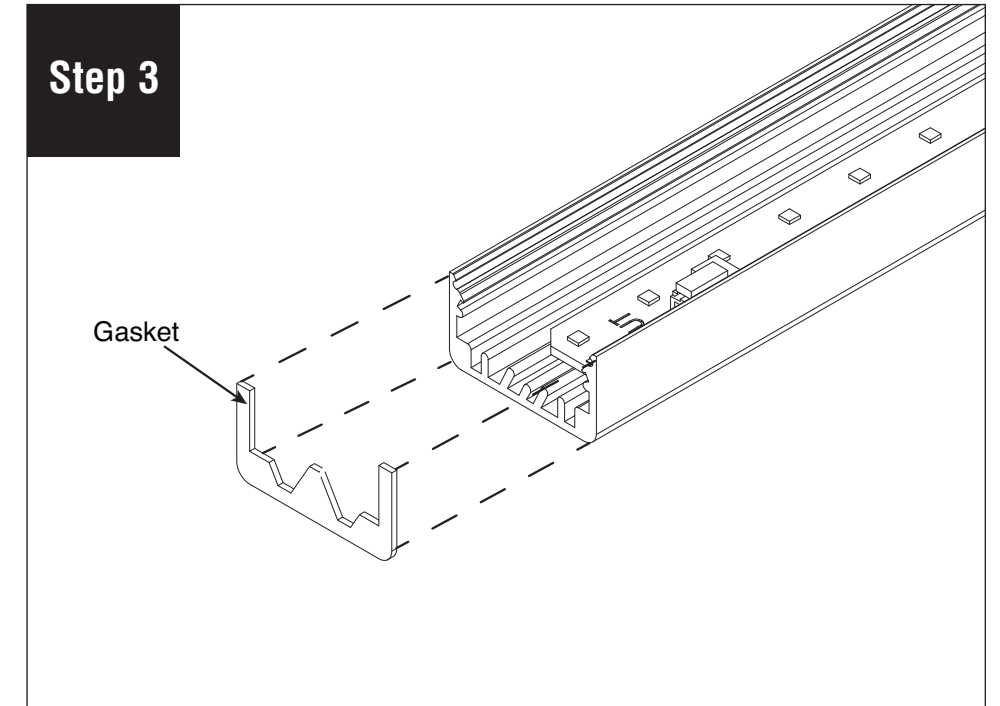
E1 - Indirect (Linear) Joiner Installation Instructions



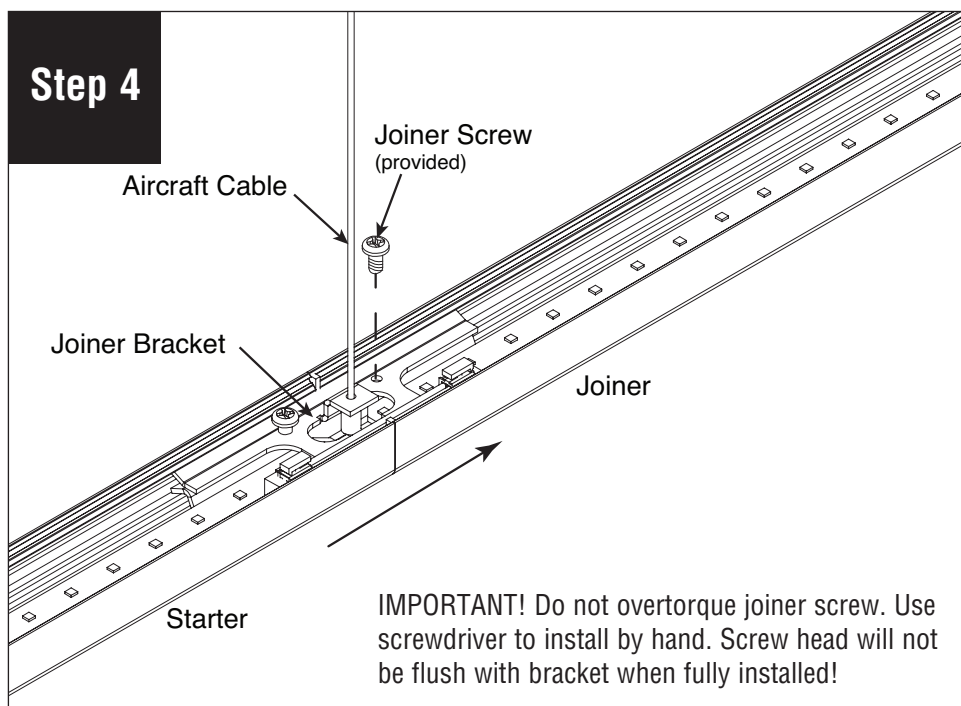
Remove lens from fixtures and set aside to prevent it from getting dirty or damaged.



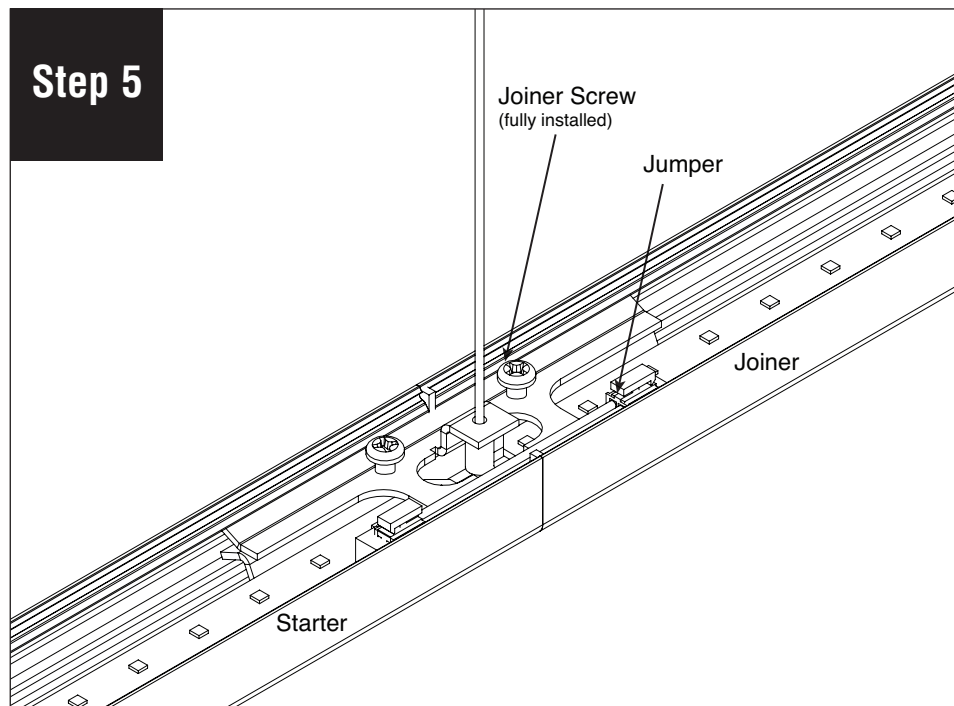
Ensure joiner bracket slides into the appropriate channels.



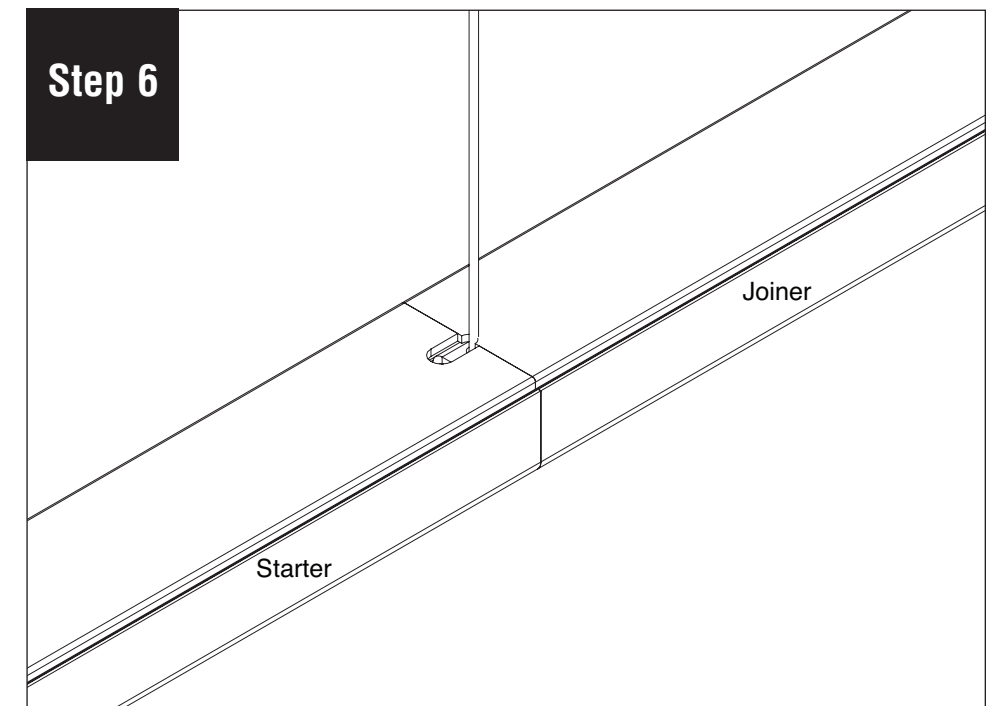
Remove adhesive covering and attach gasket to luminaire as shown.



Slide Fixtures together. Plug jumper into LED board on joiner fixture and install joiner screw. Ensure the joiner gasket is compressed as much as possible.



Screw head will not be flush with bracket when fully installed.



Reinstall lenses.