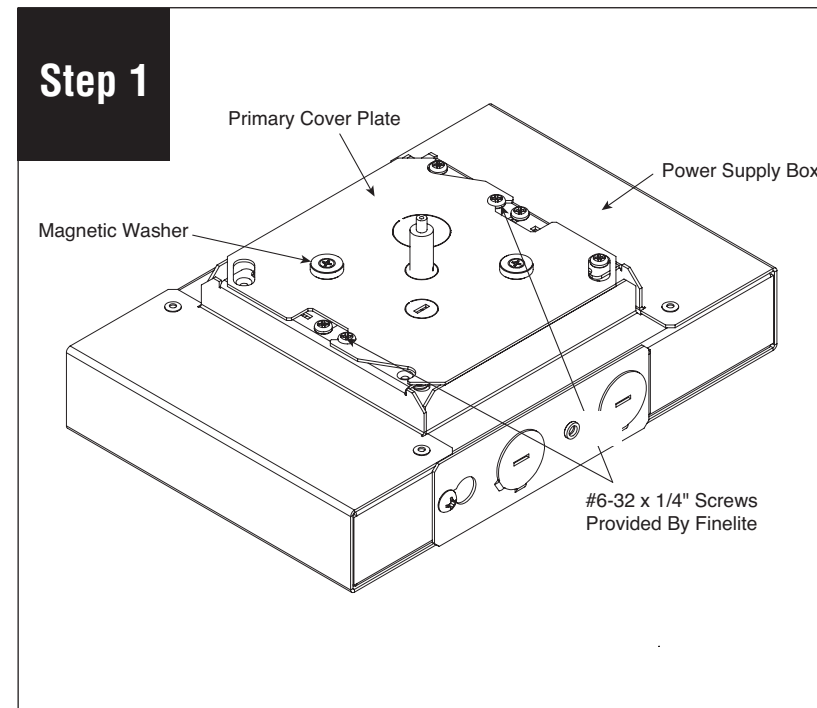
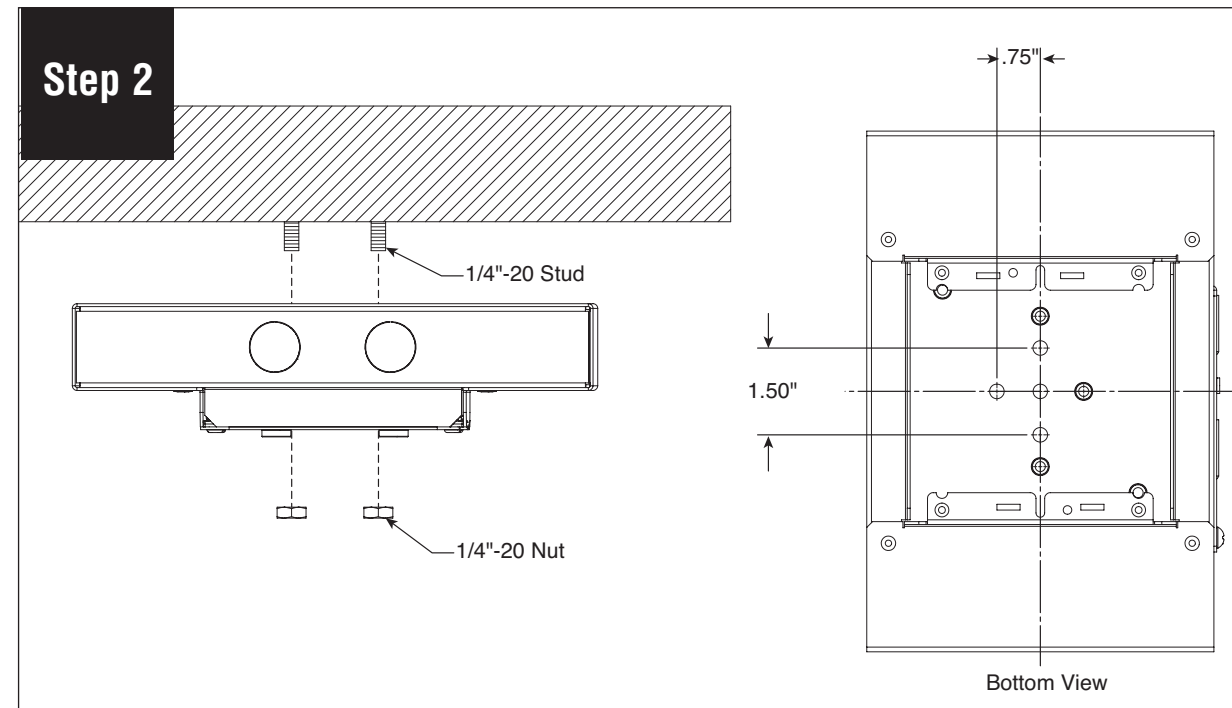


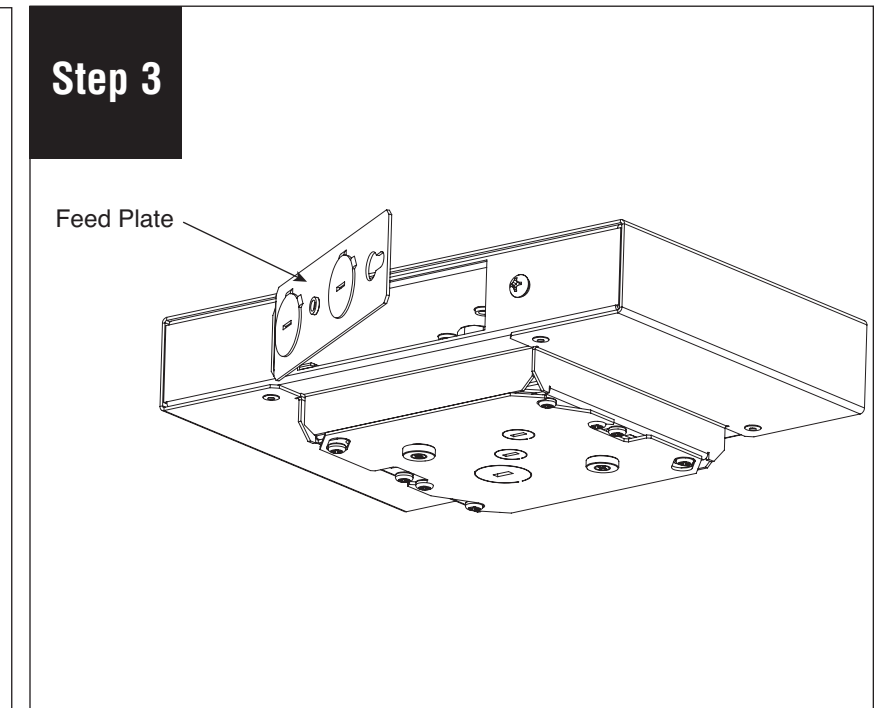
# E1 - Indirect Linear Surface Mount Installation Instructions



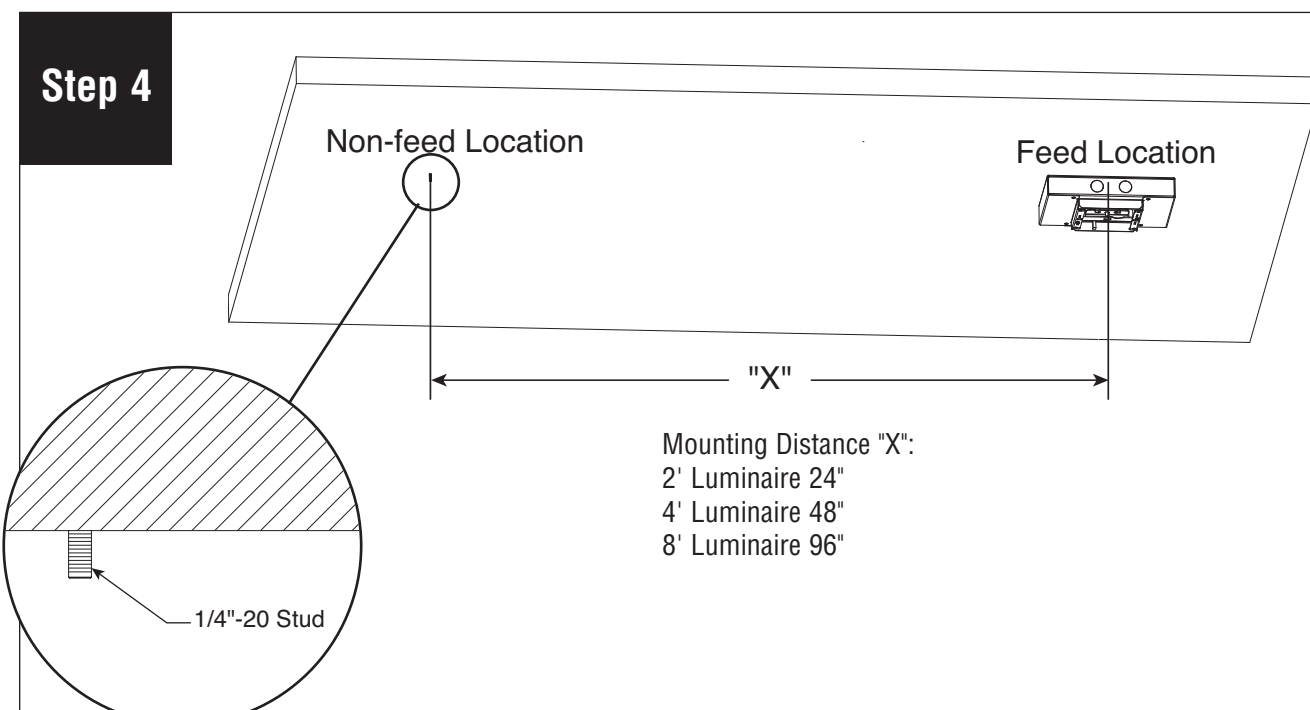
Remove power supply box from packaging. Loosen 2 #6-32 x 1/4" screws (provided) with #2 philips screw driver and rotate primary cover plate to remove.



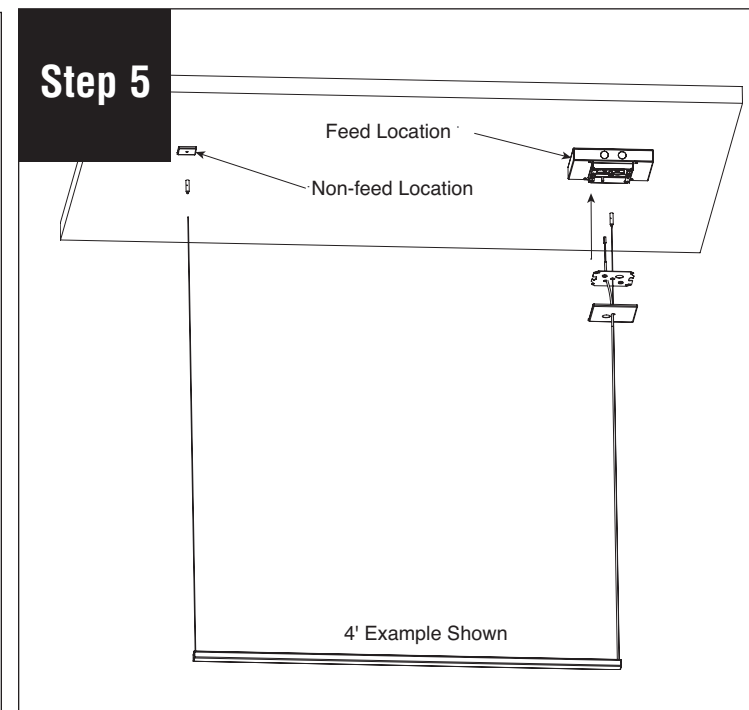
Support power supply box to ceiling according to local codes.



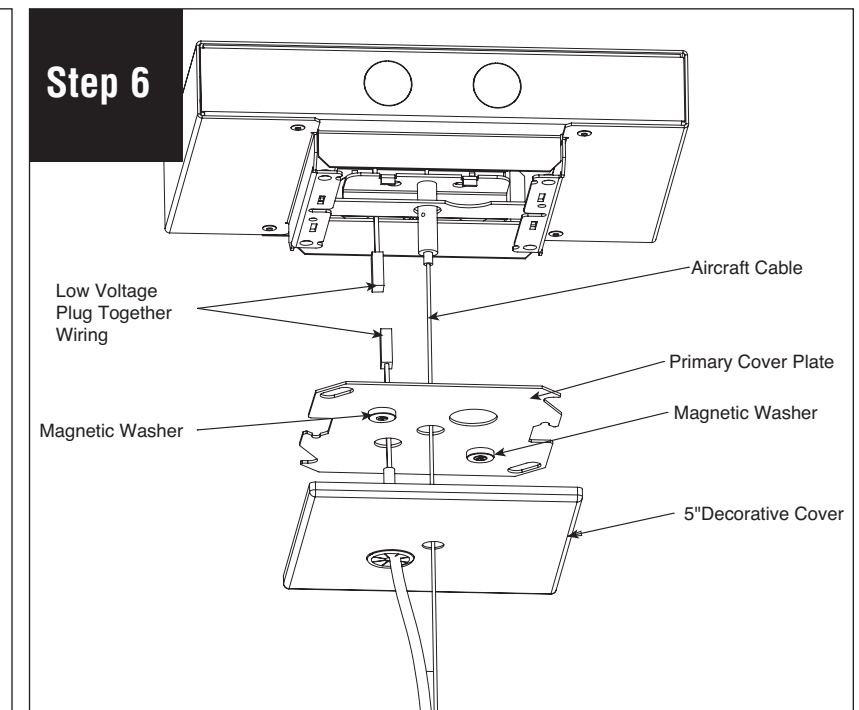
Connect conduit to the feed plate and make electrical connections. Reinstall the feed plate to the chassis. Connect purple and grey dimming wires to dimming system or cap them individually if luminaire is not to be dimmed.



Install additional suspension point and support to structure according to local codes.

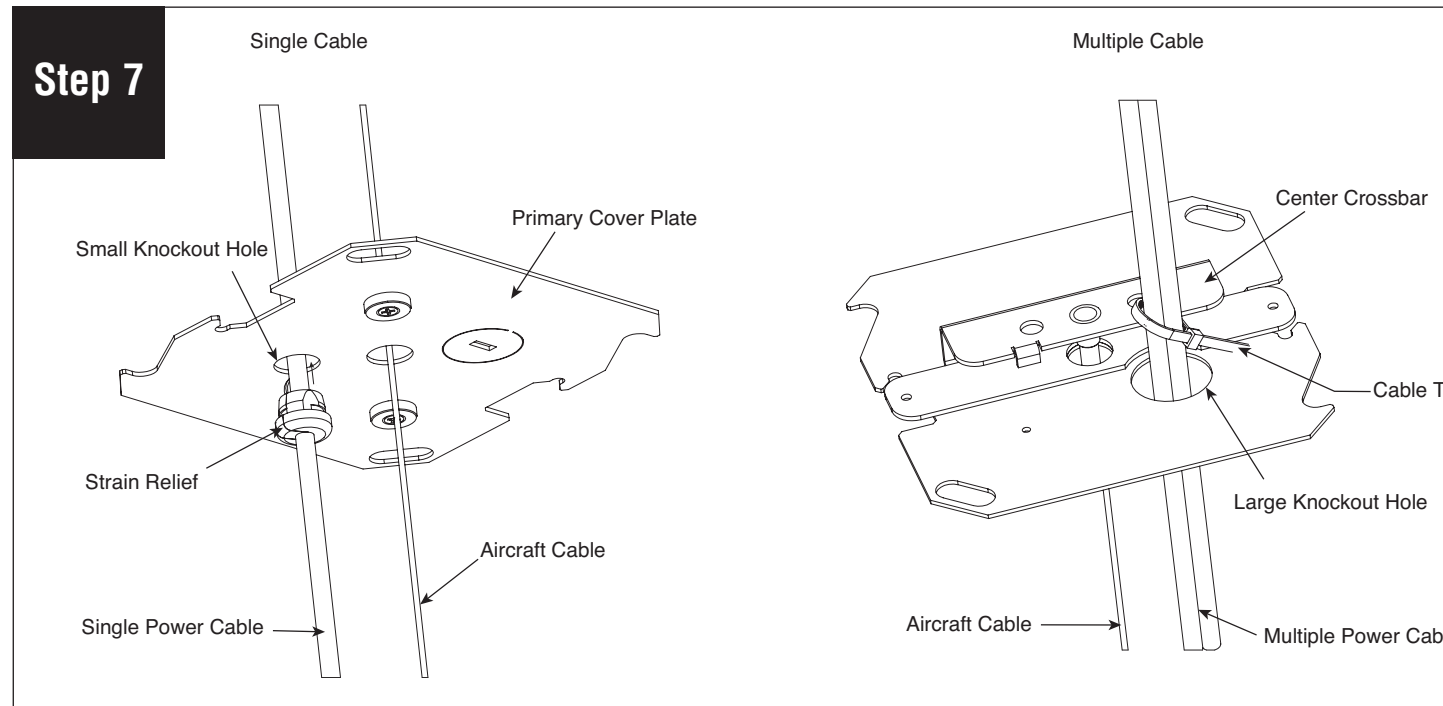


Prepare fixture for installation as shown.

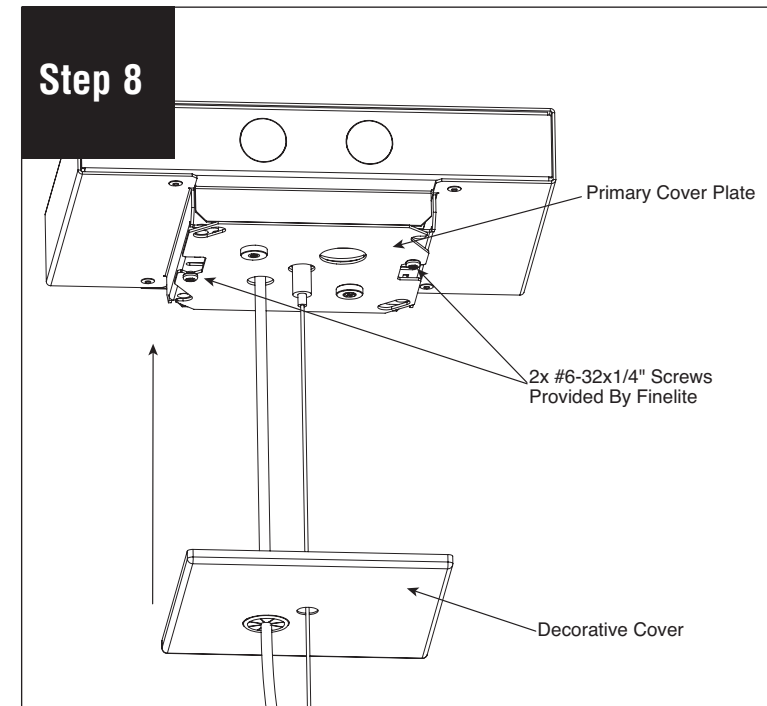


Thread decorative cover and primary cover plate over aircraft cable and low voltage power feeds. Insert aircraft cable into gripper to desired height and level fixture. Connect low voltage plug together wiring.

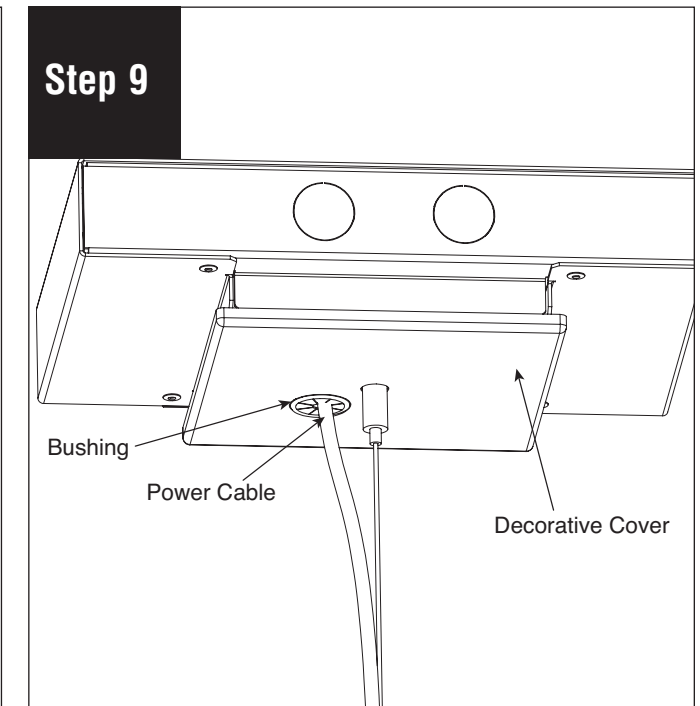
# E1 - Indirect Linear Surface Mount Installation Instructions



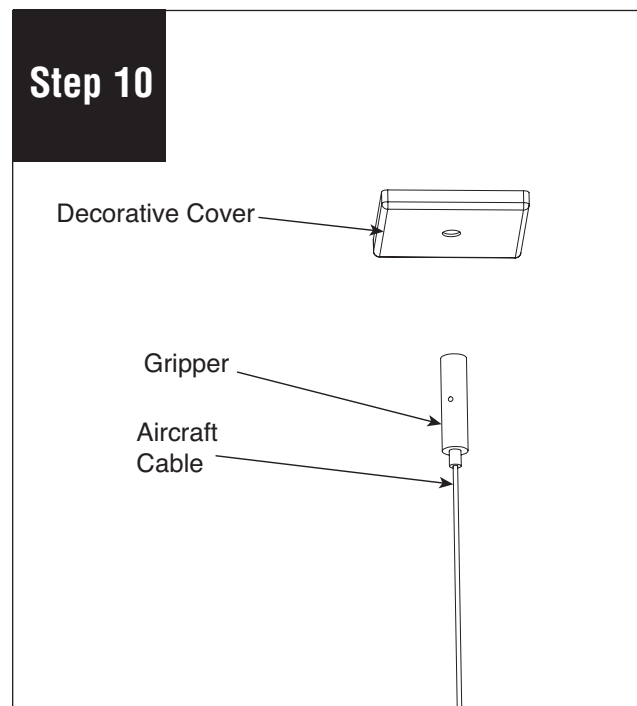
Use small knockout and add strain relief (provided) to single power cable. If multiple power cable, use large knockout and attach cable tie through center cross bar hole.



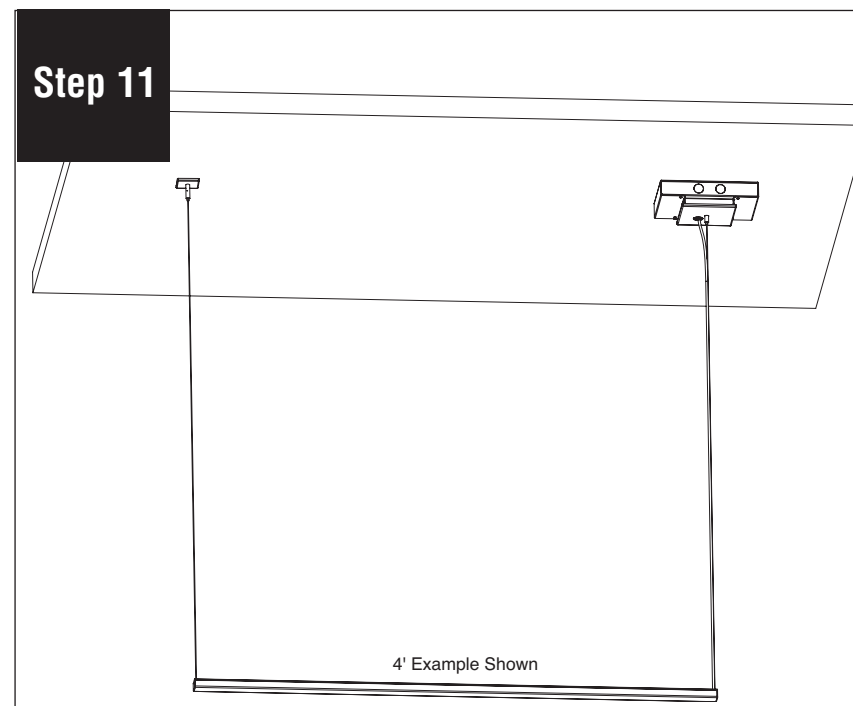
Replace primary cover plate by tightening 2x #6-32 x 1/4" screws (provided)



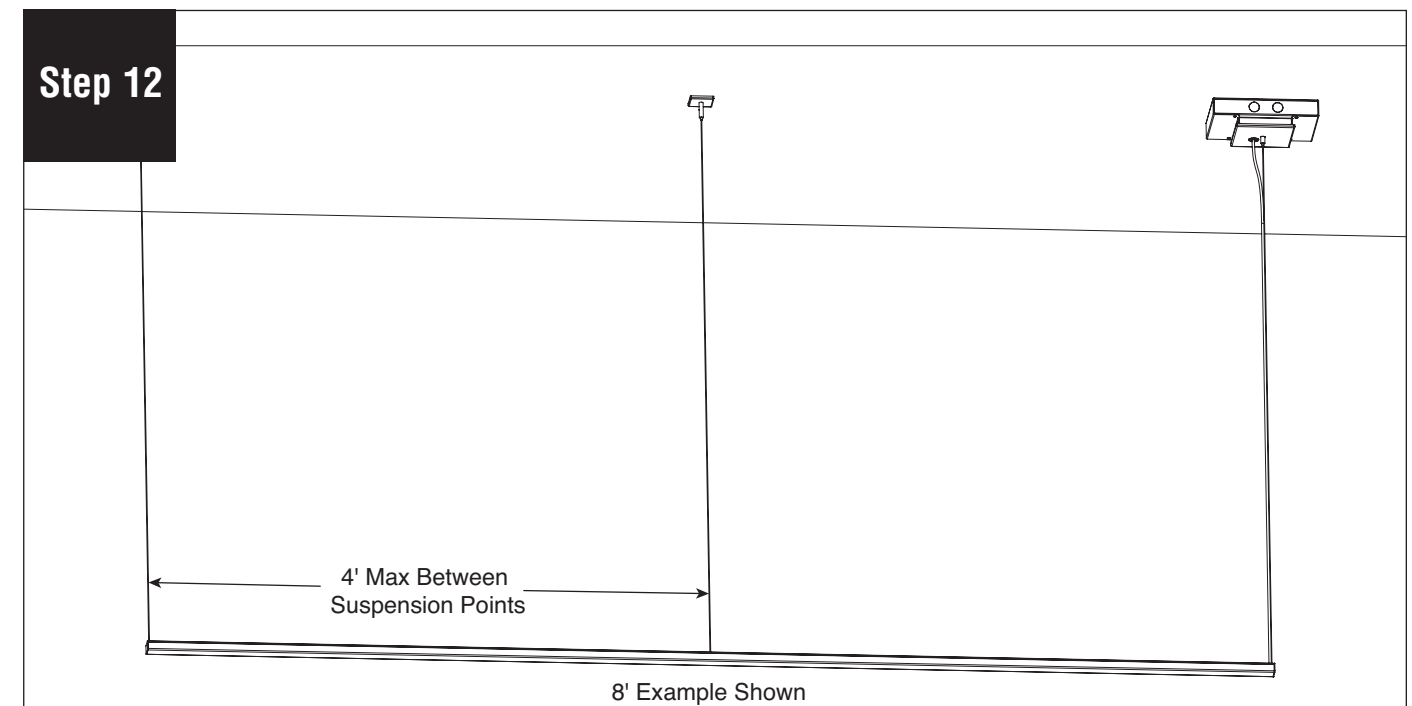
Attach decorative cover to magnetic washers (already installed) on the primary cover plate.



Secure 2" decorative cover to ceiling using gripper. Insert aircraft cable into gripper to desired height and level fixture. after leveling fixture, trim off excess aircraft cable.



Turn power on and test fixture.



4' max between suspension points in 8' fixture.