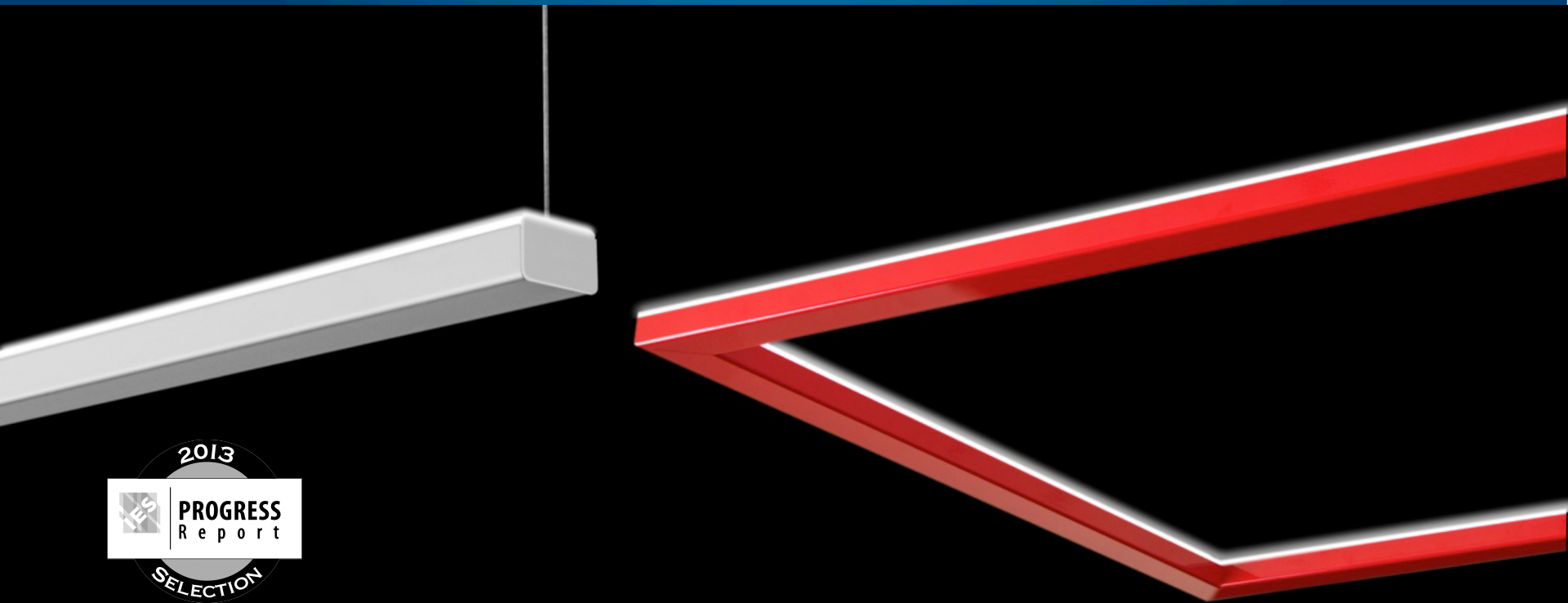


E1-Indirect LED

Minimalist Shape. Breakthrough Performance.



Declare 2.0

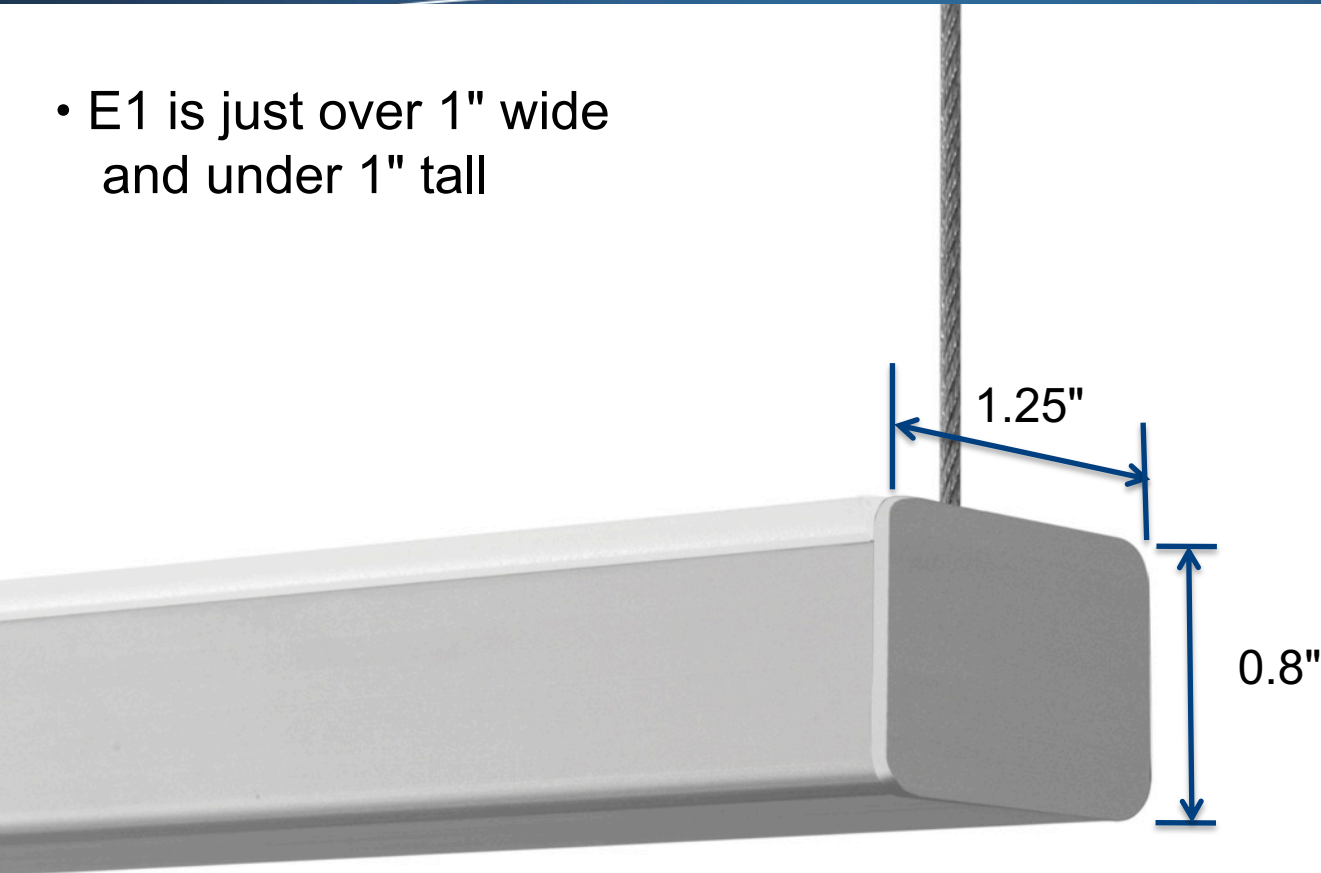
This product is enrolled in the International Living Future Institute (ILFI) Declare2.0 Program and is third-party verified.

Declare. 



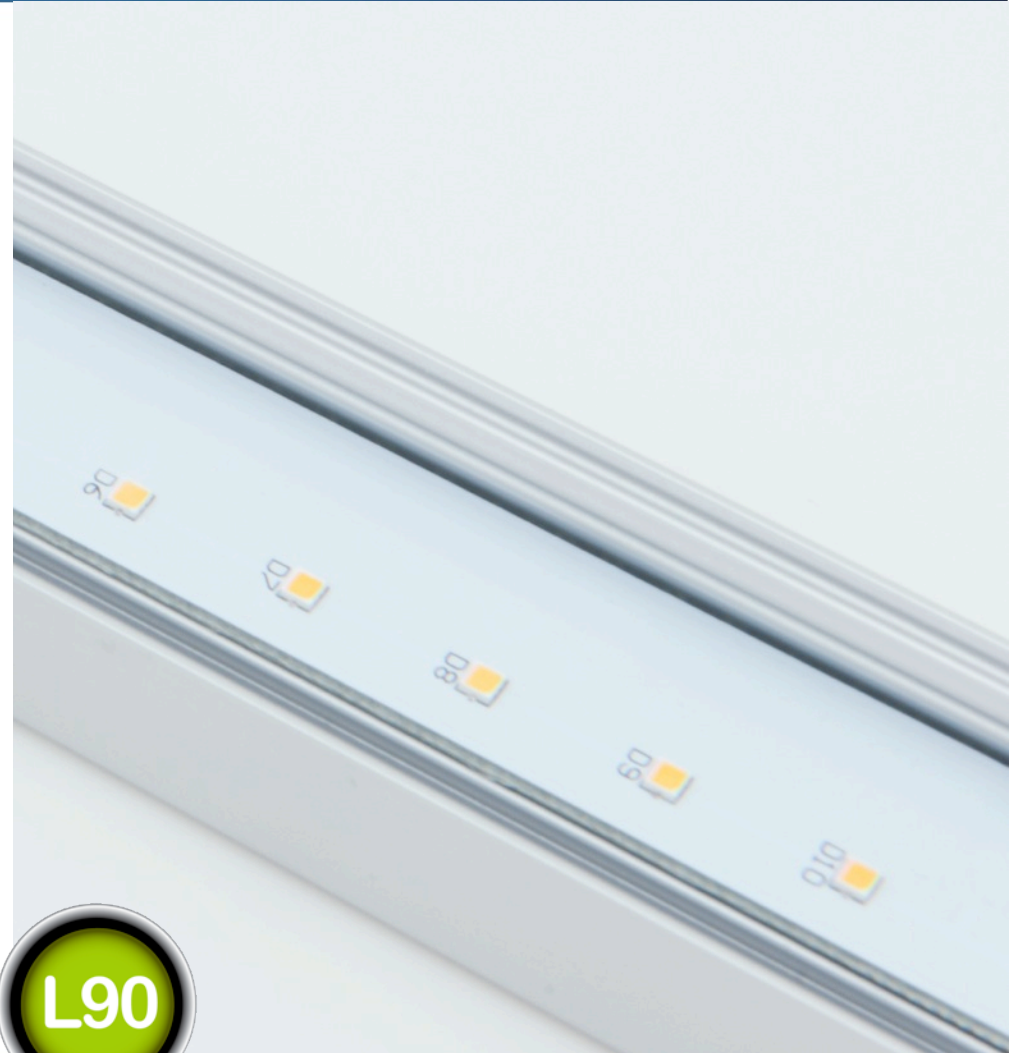
E1 - Minimalist Shape

- E1 is just over 1" wide and under 1" tall



E1 - Light Engine

- Long-life mid-power LEDs
- Available in Standard Output (SO) or High Output (HO) lumen packages
- L90 to 100,000 hours



E1 - Linear

- Highest efficacy in the <2" aperture luminaires
- SO and HO lumen packages
- Fully-adjustable (FA) aircraft cable – standard
- Micro white power cord
- Remote driver accessible from below the ceiling

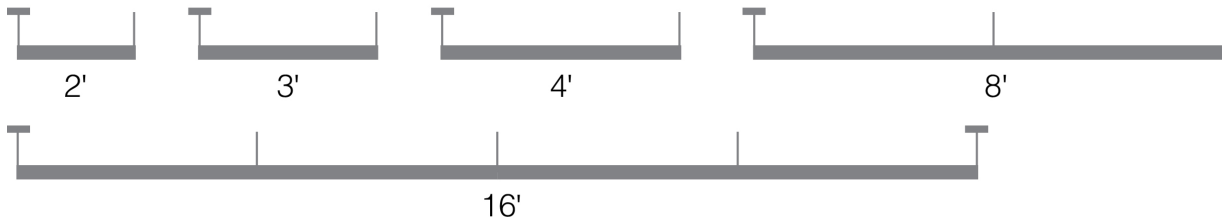


E1 - Linear



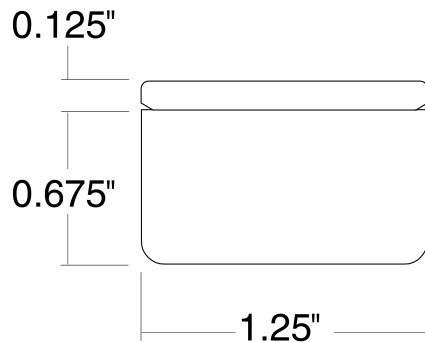
Linear Lengths

Standard 2', 3', and 4' section lengths can be combined to make longer runs. 8' length requires three suspension points. Runs require a suspension point every 4'.



Lumen Packages

- SO – 200 lumens/foot
- HO – 375 lumens/foot



Lumen Distribution per 4-Foot Section

| | 3500K | | 4000K | |
|------------------------------|-----------|----------|------------|-----------|
| Total Lumens | HO - 1520 | SO - 838 | HO - 1578* | SO - 867* |
| Wattage (watts) | 19.7 | 9.2 | 19.7 | 9.2 |
| System Efficacy (LPW) | 77.2 | 91.1 | 80.1 | 94.2 |

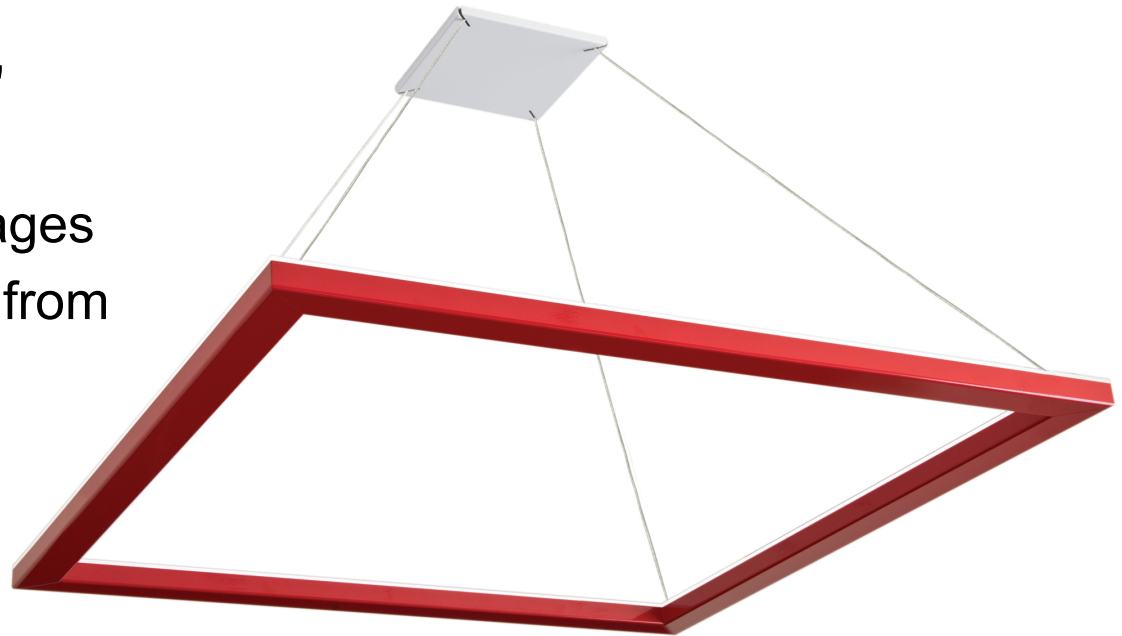
SO - Standard Output, HO - High Output

* Family Correlation



E1 - Configuration

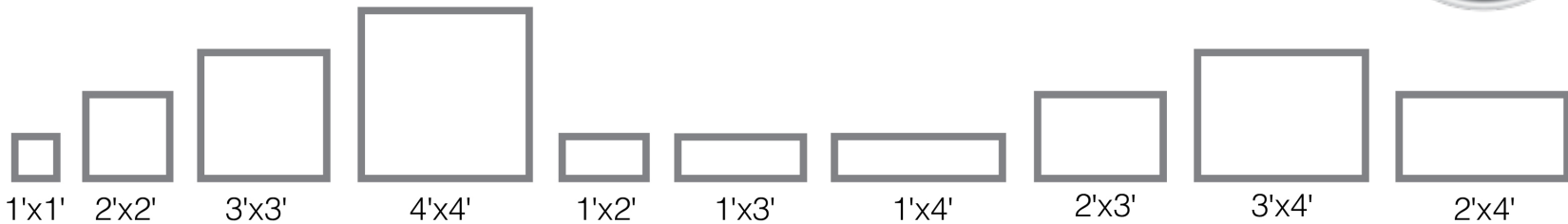
- Highest efficacy in the <2" aperture luminaires
- SO and HO lumens packages
- Remote driver accessible from below ceiling
- Thin conductive cable



E1 - Configuration

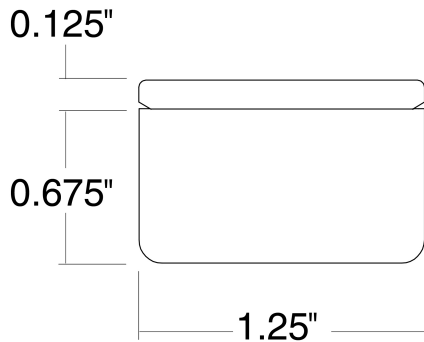


Standard Configurations



Lumen Packages

- SO – 200 lumens/foot
- HO – 375 lumens/foot



Lumen Distribution -2'x2'

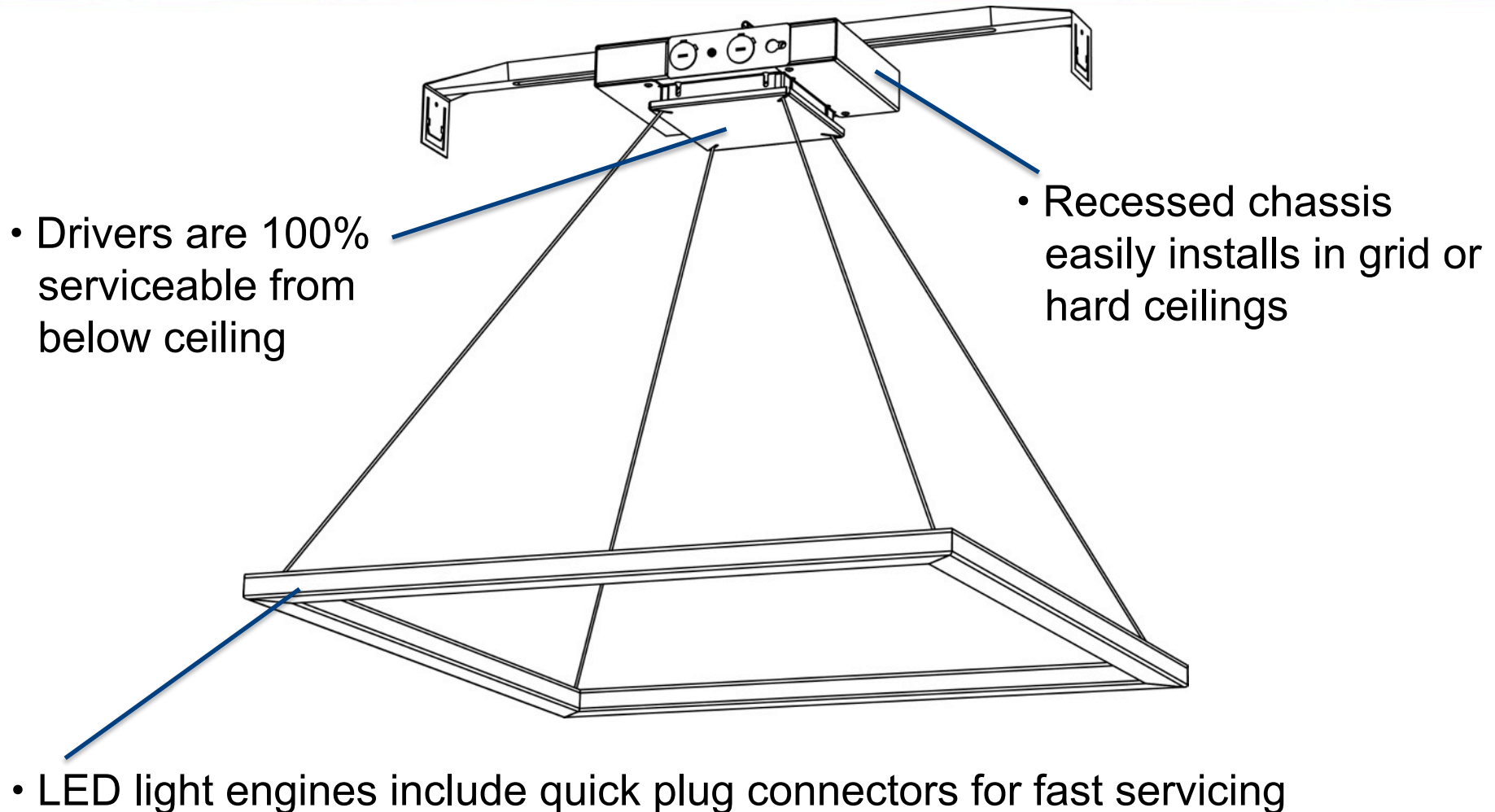
| | 3500K | | 4000K | |
|------------------------------|-----------|-----------|------------|------------|
| Total Lumens | HO - 2993 | SO - 1650 | HO - 3107* | SO - 1707* |
| Wattage (watts) | 35.7 | 18 | 35.7 | 18 |
| System Efficacy (LPW) | 83.8 | 91.7 | 87 | 94.8 |

SO - Standard Output, HO - High Output

* Family Correlation



E1 - Installation and Maintenance



The Finelite LED Difference



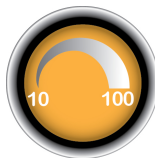
- **10-Year warranty**



- **90% of initial light output for 100,000 hours**



- **Replaceable LED light engine**



- **Dimming standard**